



***OWNERS MANUAL,  
OPERATING INSTRUCTIONS  
& INSTALLATION INSTRUCTIONS***

***READ MANUAL BEFORE OPERATING SYSTEM***

Read the owner's manual thoroughly before operating  
to ensure the most efficient use of the system.

**TO THE OWNER:**

Thank you for your Vroom purchase. Before using your Vroom read this owner's manual carefully. Learning how to properly use the Vroom will give you trouble-free, quick cleaning. Vroom is a great addition to your daily cleaning routine.

**TO THE INSTALLER:**

Please be sure this manual and warranty information are left with the power unit or customer when installation is complete.



# ***Important Safety Instructions***

## **READ ALL INSTRUCTIONS BEFORE USING THIS VACUUM SYSTEM**

*When using an electrical appliance, basic precautions should always be followed, including the following:*

### **TO REDUCE THE RISK OF FIRE, ELECTRIC SHOCK OR INJURY:**

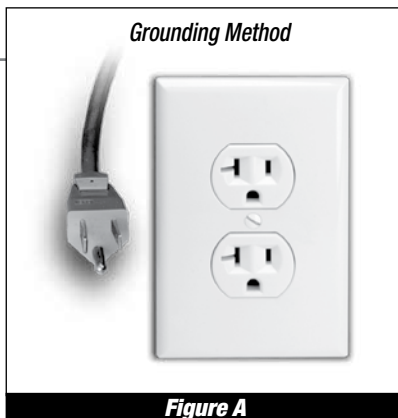
- Unplug and disconnect power before servicing.
- Do not use on wet surfaces.
- Do not allow to be used as a toy. Close attention is necessary when used by or near children.
- Use only as described in this manual. Use only manufacturer's recommended attachments.
- Do not use with damaged cord or plug. If appliance is not working as it should, has been dropped, damaged, left outdoors, or dropped into water, return it to a service center.
- Do not pull or carry by cord, use cord as a handle, close a door on cord, or pull cord around sharp edges or corners. Do not run appliance over cord. Keep cord away from heated surfaces.
- Do not handle system or appliance with wet hands.
- Do not put any object into openings. Do not use with any opening blocked. Keep openings free of dust, lint, hair and anything that may reduce airflow.
- Keep hair, loose clothing, fingers and all parts of body away from openings and moving parts.
- Do not pick up anything that is burning or smoking, such as cigarettes, matches or hot ashes.
- Connect to a properly grounded outlet. See grounding instructions.
- Turn off all controls before unplugging.
- Use extra care when cleaning on stairs.
- Do not use to pick up flammable or combustible liquids such as gasoline or use in areas where they may be present.
- To reduce the risk of shock do not use on wet surfaces.
- To reduce the risk of injury from moving parts unplug before servicing.
- Do not use without filter in place.
- Use caution when pulling hose around corners as it could scuff surfaces.
- Do not use on wet surfaces.
- Do not allow to be used as a toy.
- Use only as described in this manual. Use only manufacturer's recommended attachments.
- If appliance is not working as it should, contact your dealer.
- Do not step or walk on hose.
- Do not pick up anything that is burning or smoking, such as cigarettes, matches, or hot ashes.
- Do not use to pick up any liquids.
- Do not install in wet areas or around leaking drains or water lines.

# ***VROOM Solo***

## ***Connect To A Properly Grounded Outlet Only***

### **GROUNDING INSTRUCTIONS**

This appliance must be grounded. If it should malfunction or breakdown, grounding provides a path of least resistance for electric current to reduce the risk of electric shock. This appliance is equipped with a cord having an equipment grounding conductor and grounding plug. The plug must be plugged into an appropriate outlet that is properly installed and grounded in accordance with all local codes and ordinances.



### **WARNING**

Improper connection of the equipment –grounding conductor can result in a risk of electric shock. Check with a qualified electrician or service person if you are in doubt as to whether the outlet is properly grounded. Do not modify the plug provided with the appliance – if it will not fit the outlet, have a proper outlet installed by a qualified electrician.

The Vroom Solo/Model 88500 appliance is for use on a nominal 120 volt circuit and had a grounding plug that looks like the plug illustrated in Figure A.

Make sure the appliance is connected to an outlet having the same configuration as the plug. No adapter should be used with this appliance.

**Save These Instructions**  
***Intended For Household and Light Commercial Use***



#### **Warning:**

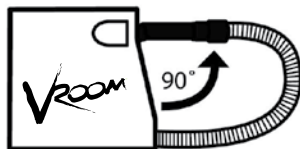
Electric shock could occur if used on wet surfaces.

**Caution:** Do not use on wet rug or floor.

# Operating Instructions

## INCLUDED

- Vroom Hose Management Cabinet– with retractable hose featuring crevice tool hose end
- Vroom Vacuum Motor with Shelf
- Convertible Floor/Rug Tool
- Adjustable Wand
- Installation Components



## GENERAL INFORMATION

Vroom is a built-in, self-contained, hose management system designed specifically for quick cleanups. The Vroom Solo comes in two (2) pieces: the vacuum motor and the hose management cabinet allowing for a flexible installation.

## WARRANTY INFORMATION

The Vroom Solo is warranted to be free from defects in materials and workmanship for three years.

This warranty is, however, subject to the following qualifications, conditions and limitations which are set forth to provide you and all users of Vroom Solo with information concerning the duration, extent, availability and applicability of this Vroom Solo Limited Warranty.

### ***Duration of Warranty and to Whom Extended***

H-P Products warrants to the customer, the Vroom Solo equipment manufactured or supplied by H-P Products to be free from defects in material and workmanship under normal use and when properly installed and operated, for a period of three years from the date of purchase by the original consumer purchaser.

### ***Exceptions and Limitations on Warranty***

Defects, malfunctions, failure or damage caused by improper, unreasonable or negligent use or repair while the warranted parts are in the possession of the consumer are excluded from warranty.

The warranty does not cover unauthorized repair of the motor assembly. This warranty is limited to the replacement of defective parts and any costs of shipping or repair shall be incurred by the purchaser.

THIS WARRANTY IS A SOLE AND EXCLUSIVE WARRANTY. ALL OTHER WARRANTIES ARE INCLUDING IMPLIED WARRANTIES OF MERCHANTABILITY OR FITNESS FOR A PARTICULAR PURPOSE ARE EXCLUDED. THIS WARRANTY COVERS ONLY LIABILITY AND RESPONSIBILITY DESCRIBED HEREIN AND THERE IS NO LIABILITY FOR ANY CONSEQUENTIAL, INCIDENTAL, OR SPECIAL DAMAGES ARISING FROM THE USE OF THIS SYSTEM.

Some states do not allow exclusion or limitation of warranties or limitation of incidental or consequential damages so the above exclusion may not apply to you. This warranty gives you specific legal rights and you may have other rights that vary from state to state.

Vroom is manufactured by H-P Products, Louisville, OH 44641, 1-800-822-8356.

[www.VroomYourRoom.com](http://www.VroomYourRoom.com)

## Operating Instructions, continued

The Vroom turns on automatically by pulling up and slightly twisting the handle from the docking station. The handle docking station needs to be at a 90° angle to activate the vacuum system. To vacuum pull out the amount of hose you need (the hose extends up to 24 feet) and clean up dry spills in seconds. The vacuumed debris that is cleaned up will be transported to the canister. The airflow from your vacuum system will assist in retracting the hose. Simply walk the hose back toward the cabinet. **The system will shut off when you place the hose handle back into the docking station.**

### CHANGING THE BAG

In order to keep your Vroom Solo operating at peak performance it is necessary to perform simple, routine maintenance to the system. The Vroom Solo is equipped with a one gallon capacity bag and secondary filter & support (see illustration below for replacement reference).

The collection bag needs to be replaced at regular intervals based on how frequently the system is used. To maintain vacuum power, replace the bag (part number 7797-V) when it is 2/3 to 3/4 full.

### TO CHANGE THE FILTER BAG: (Replacement bag 7797-V)

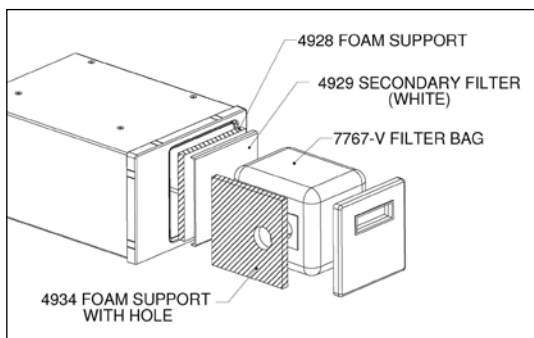
Locate the Vacuum Canister. Remove the lid by placing fingers in hand-hold of lid. Now the bag is visible. Pull the bag collar off the connector and dispose of bag. Check to be certain the filter and filter supports are positioned correctly (see Filter and filter supports instructions below). Open the new bag (part number 7797-V) by gently expanding the pleats on the bag. Slide the bag collar securely onto the connector. Replace the lid. Do not operate the Vroom Solo without the proper bag and filters installed.

### FILTER AND FILTER SUPPORTS

(Filter Supports part number 4934/4928: Filter part number 4929)

The secondary filters and filter support are in place to insure proper airflow around the collection bag. It is usually not necessary to replace these parts, but it is important to check that they are located properly each time you replace the collection bag. (See illustration for proper positioning.)

**NOTE:** This appliance has a THERMAL PROTECTOR built into the motor to prevent overheating. If motor will not operate, wait until the motor cools, then pull power cord plug out of receptacle—re-insert to reset. If motor brushes or bearings are worn out, the thermal protector will trip off again after a short period of time. If this happens, service for this and any other servicing should be performed by an authorized dealer.



To order replacement parts (7797-V, 4934, 4928, 4928) go to [www.centralvachq.com](http://www.centralvachq.com) or call H-P Products at 1-800-822-8356.

# Installation Instructions

## ***There are two sizes of Vroom Retractable Hose Cabinets:***

- 1) Fits into 18" and larger base cabinets (commonly found in Bathrooms). The hose extends up to 18'.
- 2) Fits into 22" and larger base cabinets (commonly found in Kitchen's and laundry rooms). The hose extends up to 24'.

## ***Installation Overview***

- 1) Determine the position of the Vroom in the cabinet
- 2) Secure all brackets and connect to motor

## **INSTALLATION DETAILS**

1. Locate the unit centrally so that the areas to be cleaned can be conveniently reached. Also locate near a grounded electrical receptacle for easy plug-in connection of motor cord. Route the supply cord so that it doesn't rest against sharp edges or pinch points. See Grounding Instruction on page 4.
2. To determine the best configuration for our installation, temporarily install unit for best location. Be sure there is clearance to remove the cover and filter bag.

## ***Positioning the Unit...***



Set the product inside the cabinet for positioning. The side of the unit should be lined up with the door frame opening to allow clearance for removing the hose handle without hitting the door frame.



From the side, the unit should be positioned as far forward as possible while still allowing the cabinet door to close without hitting the hose handle.

**Determine Position:** position the top bracket (consists of the bracket and sliding arm). There are two options to secure the top of the unit:



**Step  
3**

**OR**



**OR**

**Secure the unit to the door frame.** Pre-drill a pilot hole in the door frame before driving screw to prevent splitting the wood (use a 5/64 drill bit).

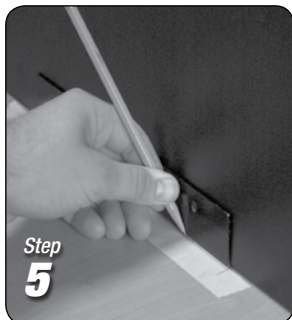
**Secure the unit to the cabinet side wall.** Pre-drill a pilot hole in the side wall before driving screw to prevent splitting the wood (use a 5/64 drill bit).



**Step  
4**

Check to make sure that there is clearance for the door and proper hose operation.

Do not insert screws at this time. The Vroom will need to be removed (see step 6).



**Step  
5**

**Positioning the Base Bracket**  
Position the unit and make reference marks for the bracket. (A piece of masking tape to mark on works well.)



**Step  
6**

Remove the unit



**Step  
7**

Align the bracket to the reference marks and predrill the 2 holes. Install the 2 screws through the bracket into the floor of the cabinet.



**Step  
8**

Place the Vroom back into the bracket and properly position. Then use two black wood screws (provided) to secure the Vroom to the Base Bracket. **WARNING:** using oversized screws can damage the internal workings of the Vroom unit.

# Securing the unit....

**Step  
9**

To completely secure the Vroom there are two options:



**OR**

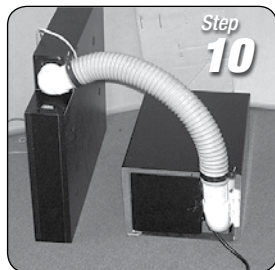
**OR**



To secure to the door frame, use a black wood screw to secure the sliding arm (pre-drill: see step 3).

To secure to the side wall use a Phillips screw driver and a black wood screw (see step 3). CAUTION: Do not over tighten the screw.

**Step  
10**



Connect the Vroom motor compartment to the hose management case by connecting them with flex hose and hose clamps (included).

**Step  
11**



Connect the pre-stripped wires from the hose management case to the wires from the motor compartment using wire nuts (provided).

**Step  
12**



To secure motor compartment to the base of the cabinet, peel the easy release tape. NOTE: Use the alcohol wipes to clean base cabinet (included)

**Step  
13**



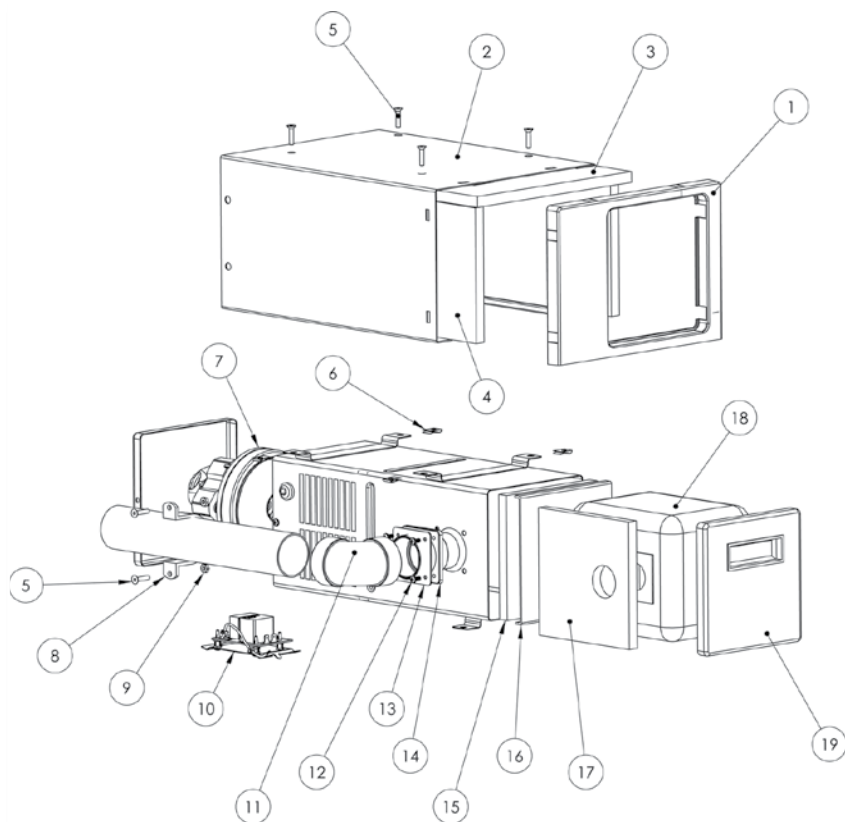
Plug the motor compartment into a grounded 120V outlet. You are ready to clean!

## VROOM Solo Specifications

Part Number	9170
Model Number	Vroom Solo/Model 88500
Replacement Filters and Bag Part Numbers	7767-V Debris Bag (3 Pack) 4929 Filter 4928/4934 Filter Support
Air Watts	450
CFM	120
Sealed Vacuum	105"
Electric Power Cord	Length 6' Plug Type 15 Amp, (NEMA type 5-15p) 2 pole, 3 wire
Dirt Container Capacity	1 Gallon
Voltage	120 Volts (AC)
Amperes	11.3 Max/8.5 Avg
Electrical Requirements*	120V/15 Amp Circuit. Separate Circuit Recommended. For 15A Circuit use NEMA 5-15R

\* It is recommended that this unit is plugged into a dedicated circuit or a circuit that is unlikely to be used simultaneously with the Vroom. (i.e. garbage disposal)

# ***VROOM Solo Replacement Parts***



BALLOON	PART NO.	QTY	DESCRIPTION
1	9168	1	FRONT FACIA
2	9169	1	SHELF
3	9172	1	TOP FOAM
4	9171	2	SIDE FOAM
5	9147	6	SCREW #10-32 X 7/8
6	9177	4	U-NUT #10-32
7	8404	1	MOTOR
8	5545W	1	PIPE STRAP
9	9149	2	HEX NUT #10-32
10	7090	1	REPLACEMENT PRINTED CIRCUIT BOARD
11	5506W-VL	1	ELBOW - SHORT 90 DEG
12	7655-01	4	SCREW - INLET FITTING
13	7455	1	GASKET - INLET FITTING
14	7464	1	INLET FITTING
15	4928	1	FOAM SUPPORT
16	4929	1	SECONDARY FILTER
17	4934	1	FOAM SUPPORT W/HOLE
18	7767-V	1	REPLACEMENT FILTER BAGS (PACK OF 3)
19	7759-V	1	LID - VACUUM COMPARTMENT



**Vroom™ Solo**

is manufactured by:

**H-P Products • Louisville, OH 44641**

**1-800-822-8356**

**[www.VroomYourRoom.com](http://www.VroomYourRoom.com)**