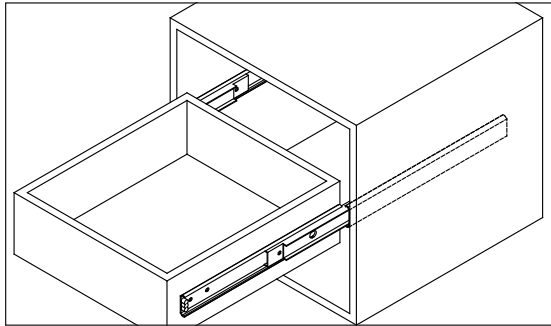




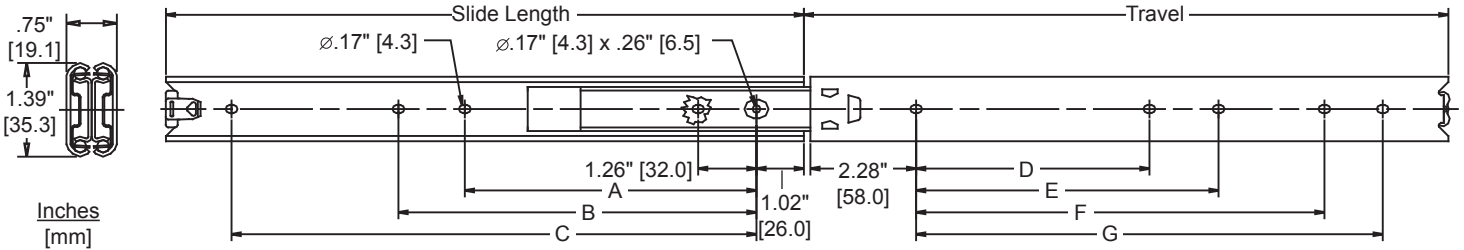
MODEL SS0330

Applications: Ideal for environments subject to corrosion.

Stainless Steel
 Full Extension
 Hold-in Detent
 Up to 143 lb. [65 kg.] Load Rating
 .75" [19.1 mm] Slide Thickness



Closed Position



Finish: Stainless Steel (RoHS compliant)
Length: 12"–24" [300 mm–600 mm] and 28" [700 mm]**
Travel: Full extension
Height: 1.39" [35.3 mm]
Load: Up to 143 lbs. [65 kg]

Side Space: .75+.030/-0.00 [19.1 mm+.76/-0.00]
Mounting: Side or hard mount
Hardware: #8 pan head screws (not included)
Features: Hold-in detent

Part Number	Slide Length	Travel ± .13 [3.2]	A	B	C	D	E	F	G	lb [kg] Load Rating
SS0330-12	11.81 [300]	11.98 [304.5]		7.55 [192]	8.81 [224]			7.55 [192]	8.81 [224]	110 [50]
SS0330-14	13.77 [350]	13.93 [354]		8.81 [224]	10.07 [256]			8.81 [224]	10.07 [256]	121 [55]
SS0330-16	15.74 [400]	15.86 [403]		7.55 [192]	12.59 [320]	6.29 [160]		11.33 [288]	12.59 [320]	121 [55]
SS0330-18	17.71 [450]	17.79 [452]		8.81 [224]	13.85 [352]	7.55 [192]		12.59 [320]	13.85 [352]	143 [65]
SS0330-20	19.68 [500]	19.72 [501]	10.07 [256]	11.33 [288]	16.37 [416]	8.81 [224]	10.07 [256]	15.11 [384]	16.37 [416]	121 [55]
SS0330-22	21.65 [550]	21.67 [550.5]	11.33 [288]	12.59 [320]	18.90 [480]	10.08 [256]	11.34 [288]	16.38 [416]	17.64 [448]	110 [50]
SS0330-24	23.62 [600]	23.62 [600]	12.60 [320]	13.86 [352]	20.16 [512]	11.34 [288]	12.60 [320]	18.90 [480]	20.16 [512]	99 [45]
SS0330-28	27.55 [700]	27.48 [698]	13.86 [352]	15.12 [384]	23.94 [608]	12.60 [320]	13.86 [352]	22.68 [576]	23.94 [608]	77 [35]

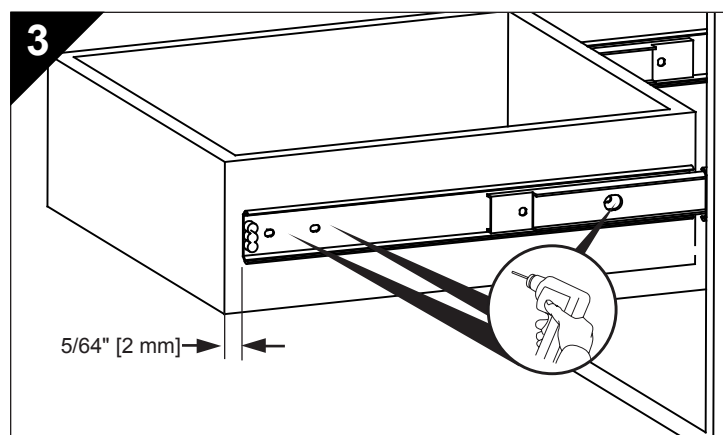
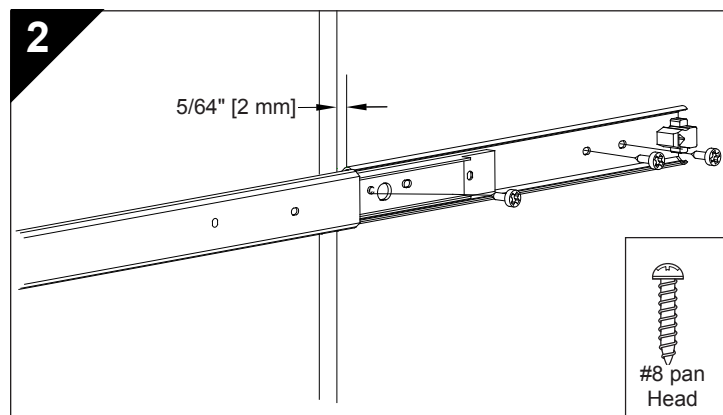
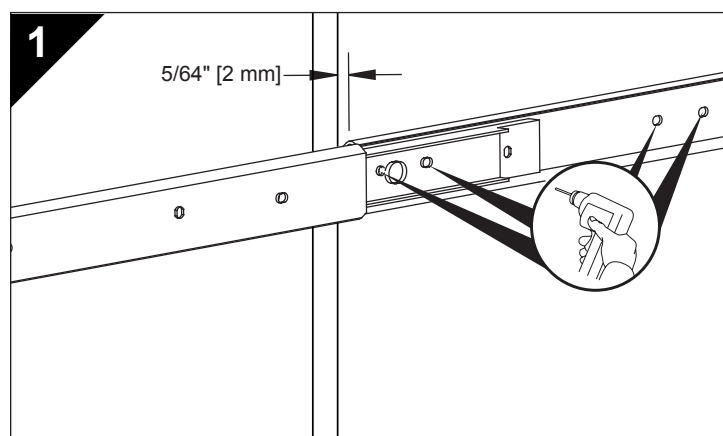
** Note: The lengths indicated in inches are approximate conversions from the metric measurements; please see the chart above for exact dimensions.

Installation Instructions

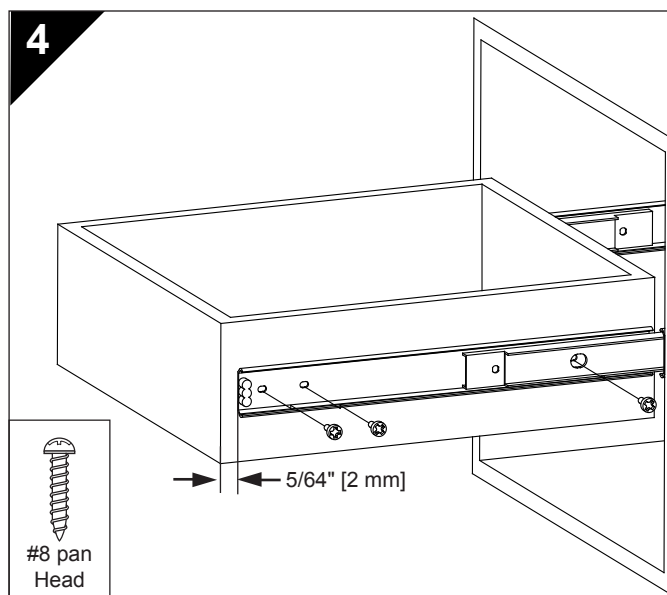
Important: Accuride recommends first pre-drilling all mounting holes (Figures 1 and 3). Align the slide as described below to pre-drill.

1. Set the outer member back 5/64" [2 mm] from the cabinet or rack opening. Mount the slide member to the cabinet or rack (Figure 2) using #8 pan head screws (not included). Be sure slides are parallel.
2. For flush-mounted drawers, position the inner member 5/64" [2 mm] back from the front of the drawer or chassis. Mount using #8 pan head screws (Figure 4).
3. Check slide alignment by opening and closing the drawer/chassis. Any sign of binding indicates an issue with side space, alignment, or the cabinet and/or drawer are out of square. To adjust alignment, loosen the screws and adjust the slide position until movement is smooth. Retighten screws. Add additional screws if necessary to secure completely.

Note: To ensure proper slide operation, make certain that all mounting screw heads are fully seated inside the slide. Use #8 pan head screws (not included); do not use washers.



For the most current technical information please visit www accuride.com



Packaging

Bulk (P) Pack: Fasteners are not included.

Lengths 12"-14" 5 pair per box
 Lengths 16"-18" 4 pair per box
 Lengths 20"-24" 3 pair per box
 Length 28" 2 pair per box

Specifications

Slide Members: Stainless Steel
 Ball Retainers: Stainless Steel
 Ball Bearings: Stainless Steel
 Stainless steel finish is RoHS compliant

Note: Specifications, materials, prices, terms, and delivery are subject to change without notice.

Slide Ordering Instructions

Complete your slide order for model SS0330 by specifying the following information:

4 Pair SS 0330 -18 P
 Total Slides Required _____
 Slide Finish _____
 Slide Model _____
 Slide Length _____
 Packaging (Fasteners are **not** included) _____

Accuride

ACCURIDE INTERNATIONAL INC.

12311 Shoemaker Avenue
 Santa Fe Springs, CA 90670

TEL (562) 903-0200

FAX (562) 903-0208

www accuride.com

Manufacturing, Engineering, and Sales

United States • Germany • Japan • Mexico • United Kingdom • China

Copyright © 2007 Accuride International Inc. 3700-9511(1190)-MK117-R1-0610