

100DR | 200DW

N Series: Deadbolt Door & Drawer Cabinet Locks

**ANSI/BHMA Grade 1 -
E07121 | E07041
Woodwork Institute (WI)
acknowledged product**

SPECIFICATIONS

Keying: Can be keyed together with other N Series locks
Rekeyable: Easily rekeyable via set screw cylinder release mechanism

ANSI/BHMA: Passed ANSI/BHMA A156.11 Grade 1 performance requirements. Equivalent to E07121(100DR) / E07041(200DW).

Optional functions: See also our 100M/200M Series MRI locks and our 100B/200B weather resistant locks

Standard function: Key removable in locked or unlocked position. Standard function locks are non-handed.

Key-retaining: Key removable in locked position only. Specify handing (KL/KR for doors or KI/KV for drawers) when ordering.

Long bolt: Extends bolt 3/4" on both ends. Specify -LB option when ordering.

US Patent Nos: 4,899,563; 4,920,774

Body: Zinc die cast

Cylinder: Solid brass, pin tumbler

Cylinder length 100DR: 15/16" or 1-3/8"

Cylinder length 200DW: 15/16", 1-3/8" or 1-5/8"

Barrel diameter: 7/8"

Finish: 26D, US4, 10B or US19 (US19 not available on 100 1-3/8" or 200 1-5/8")

Packaged: Packed 10 per box

KEYING INFORMATION

Keyway: N Series (equivalent to National D4291 4-pin or D4292 5-pin system)

Keys: Includes 2 keys per lock

Stock keying: KD/KA - 4 pin standard

Stock KA#: 101, 103, 107, 915, 51001, 51002, 51003, 51004

Masterkeyed: 5-pin standard

Grand masterkeyed: Available

Keyblank 4-pin: KBN-4-NP (equivalent to NA14, 1069L)

Keyblank 5-pin: KBN-5-NP (equivalent to NA12, 1069LA)

Keyblank 5-pin copper plated: KBN-5B (use with 100M/200M MRI locks)

Keying Kit: N1

INCLUDED ACCESSORIES

100DR: 2 keys, 56-1 bar strike, and lock mounting screws

200DW: 2 keys, 12-3 angle strike, and lock mounting screws

OPTIONAL ACCESSORIES

Spacers: WP20 (3/16" thick), WP21 (3/32" thick), WP22 (1/4" thick), WP23 (1/2" thick)

Strikes: 07S, 12-1, 12-2, 12-3, 12-4, 12-5, 56-1

Trim collars: TR1256

Through-bolt hardware: ETS2 through-bolt plate, ETS2-PL trim pull and ETST2 template

Extended (long) bolt: 15-1-35 (for use with 100DR or 200DW)



56-1



With long-bolt option

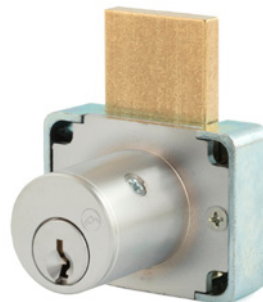
100DR

Function: Cabinet door lock

ANSI/BHMA No. E07121

Barrel length: 15/16" or 1-3/8"

Long bolt: Extends overall bolt length by 1-1/2". Specify -LB option at time of order.



12-3



With long-bolt option

200DW

Function: Drawer lock

ANSI/BHMA No. E07041

Barrel length: 15/16", 1-3/8" or 1-5/8"

Long bolt: Specify -LB option at time of order.

AVAILABLE FINISHES



US26D



US4



US10B



US19

NEW

Now in flat black



WARNING: This product can expose you to chemicals including chromium, which is known to the State of California to cause cancer and birth defects or other reproductive harm. For more information go to www.P65Warnings.ca.gov.



**OLYMPUS
LOCK**

100DR | 200DW

ANSI/BHMA Grade 1
E07121 | E07041

N Series: Deadbolt Door & Drawer Cabinet Locks

OPTIONAL ACCESSORIES - See our website for a complete list of optional components.

Internal plastic spacers

- WP20 3/16" thick plastic spacer
- WP21 3/32" thick plastic spacer
- WP22 1/4" thick plastic spacer
- WP23 1/2" thick plastic spacer

Strikes

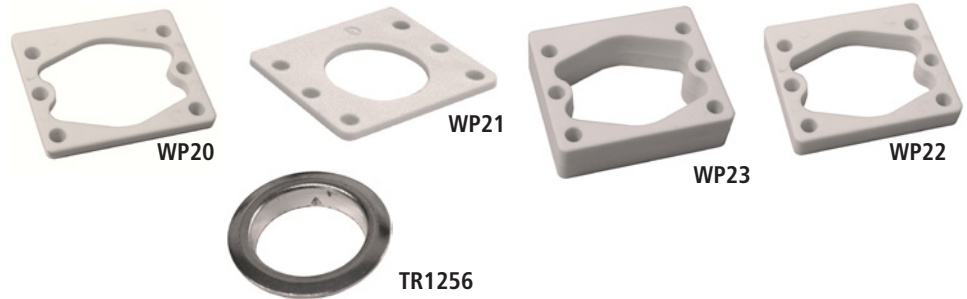
- 07S, 12-1, 12-2, 12-3, 12-4, 12-5, 56-1

Trim Ring

- TR1256 trim ring

Extended bolt

- 15-1-35 (see below for installed dimensions)



Through-bolt plate

External metal 1/8" or 1/4" through-bolt plate allows for an attractive flush mounting of the cabinet lock face. Available in US3 or US26D finish.

- ETS2-125 through-bolt plate, 1/8" thick
- ETS2-250 through-bolt plate, 1/4" thick

Through-bolt plate template

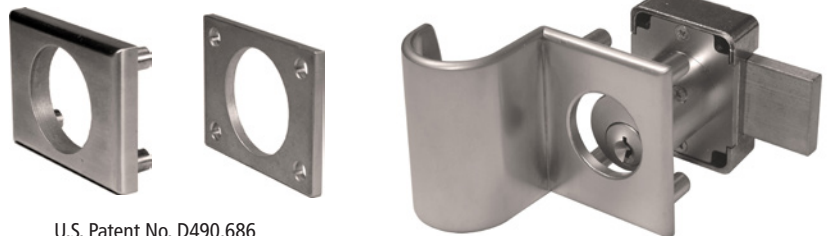
Allows for proper mounting hole placement of through-bolt plate. Can be used as a 1/8" shim spacer. Available in US3 and US26D finish.

- ETST2 through-bolt plate template

ETS2
Through-bolt plate

ETST2
Through-bolt plate
template

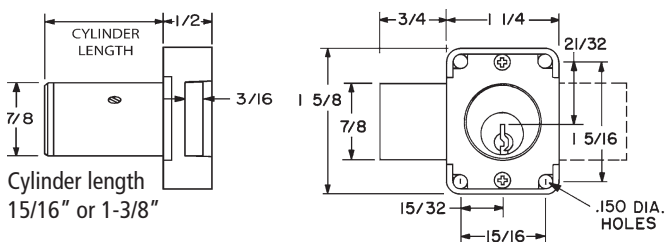
ETS2-PL
Through-bolt pull



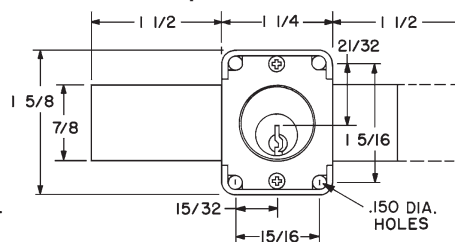
U.S. Patent No. D490,686

DIMENSIONS

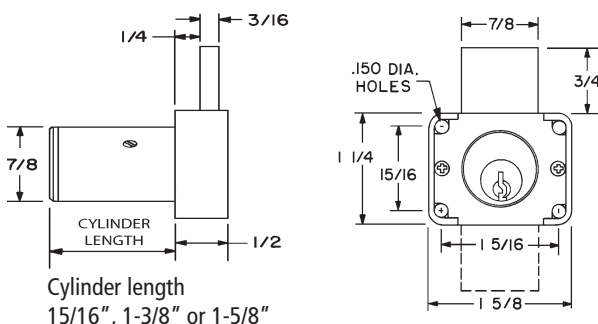
100DR Cabinet Door Lock



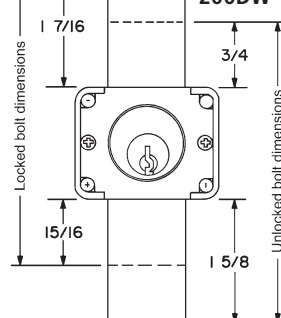
Extended (long) bolt option for 100DR



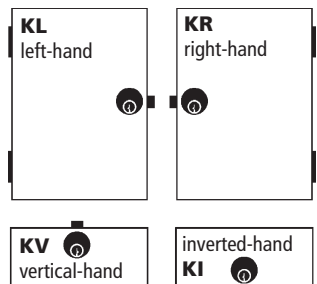
200DW Drawer Lock



Extended (long) bolt option for 200DW



Key-Retaining Handing Chart



Handing information is only required for key-retaining function. Standard function locks are non-handed.