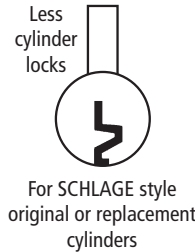


# 700LC | 800LC

## LC Series: Less Cylinder Deadbolt Door & Drawer Cabinet Locks



**ANSI/BHMA Grade 1**  
**E07121 | E07041**  
**Woodwork Institute (WI)**  
**acknowledged product**

### SPECIFICATIONS

**Keying:** Can be keyed together with other Schlage C Keyway locks

**Rekeyable:** Easily rekeyable via set screw cylinder release mechanism

**ANSI/BHMA:** Passed ANSI/BHMA A156.11 Grade 1 performance requirements. Equivalent to E07121 (700S) / E07041 (800S).

**US Patent Nos:** 4,899,563; 4,920,774

**Standard function:** Key removable in locked or unlocked position. Standard function locks are non-handed.

**Key-retaining:** Key removable in locked position only. Specify handing (KL/KR for doors or KI/KV for drawers) when ordering.

**Body:** Zinc die cast

**Cylinder:** Will accept other manufacturer's Schlage compatible key-in-knob cylinders

**Cylinder length:** 1-1/8" or 1-3/8"

**Barrel diameter:** 1-1/8"

**Finish:** 26D, US3, 10B

**Packaged:** Packed 10 per box

### CYLINDER INFORMATION

**Cylinder:** Not included

**Includes:** All parts necessary to work with other manufacturers cylinders

**ILCO cylinder:** #1599 (various keyways available)

**Assa cylinder:** Assa part-number #65611 (Requires 1-3/8" lock body)

**Medeco cylinders:** Requires LCM (1-3/8") locks

Original: 6 pin #20-009S4

5 pin #20-008S4

Biaxial: 6 pin #20W009S4

5 pin #20W008S4

Keymark: 6 pin #20K009S4

Key retaining cylinder: #20W200S1

**Compatible electronic cylinders:** Medeco LOGIC, ASSA CLIQ or VIDEX CyberLock key-in-knob cylinders

### INCLUDED ACCESSORIES

**For 1-1/8" barrel length locks:**

10-350 plastic spacers (qty 2)

10-054 1/4" plastic bar strike

10-055 1/2" plastic bar strike

**For 1-3/8" barrel length locks:**

10-054 1/4" plastic bar strike

### OPTIONAL ACCESSORIES

**Spacers:** 10-348 (1/4" thick), 10-349 (1/2" thick), 10-350 (1/8" thick)

**Strikes:** 10-052, 10-056, 10-057, 10-058, 12-2, 12-3, 12-4

**Trim collar:** TR78

**Through-bolt hardware:** ETS1 through-bolt plate, ETS1-PL trim pull and ETST1 template

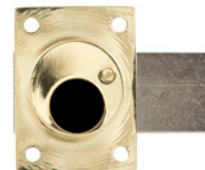
## 700LC

**Function:** Cabinet door lock

**ANSI/BHMA No.:** E07121



US26D finish



US3 finish



US10B finish

## 800LC

**Function:** Drawer lock

**ANSI/BHMA No.:** E07041



US26D finish

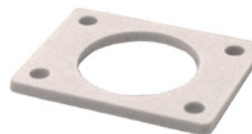


US3 finish



US10B finish

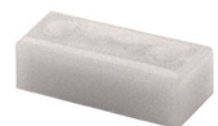
### INCLUDED ACCESSORIES



**10-350 internal spacers**  
For a flush fit on varying material thicknesses



**10-054 bar strike**  
1/4" plastic bar strike



**10-055 bar strike**  
1/2" plastic bar strike



**WARNING:** This product can expose you to chemicals including chromium, which is known to the State of California to cause cancer and birth defects or other reproductive harm. For more information go to [www.P65Warnings.ca.gov](http://www.P65Warnings.ca.gov).



**OLYMPUS**  
**LOCK**  
INC.

# 700LC | 800LC

ANSI/BHMA Grade 1  
E07121 | E07041

## LC Series: Less Cylinder Deadbolt Door & Drawer Cabinet Locks

**OPTIONAL ACCESSORIES** - See our website for a complete list of optional components.

### Internal Plastic Spacers

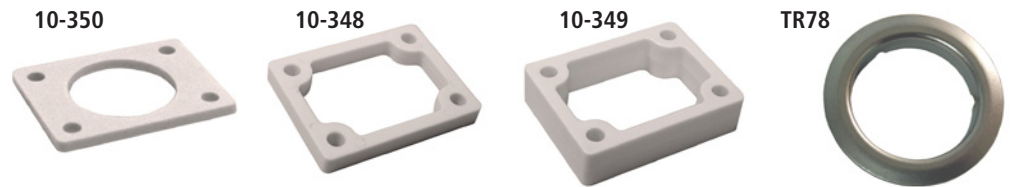
- 10-350 1/8" thick plastic spacers
- 10-348 1/4" thick plastic spacers
- 10-349 1/2" thick plastic spacers

### Strikes

- Plastic bar strikes: 10-054, 10-055, 10-057, 10-058. Metal strikes: 10-052, 10-056 12-1, 12-2, 12-3, 12-4

### Trim Ring

- TR78 trim ring



### Through-Bolt Mounting Plate

External metal 1/8" or 1/4" through-bolt plate allows for secure and attractive flush mounting of the cabinet lock face. Available in US3 or US26D finish.

- ETS1-125 through-bolt plate, 1/8" thick
- ETS1-250 through-bolt plate, 1/4" thick

### Through-Bolt Mounting Plate Template

Allows for proper mounting hole placement of through-bolt plate. Can be used as a 1/8" shim spacer. Available in US3 and US26D finish.

- ETST2 through-bolt plate template

ETS1  
Through-bolt plate

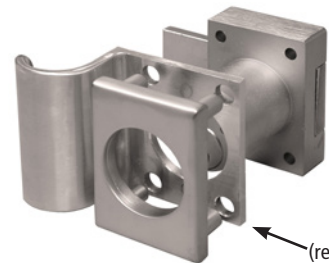


ETST1  
Through-bolt plate  
template



U.S. Patent No. D490,686

ETS1-PL  
Through-bolt pull



ETS1-PL  
(requires use of  
ETS1)

### 78-KABA-CONV Kaba Conversion Kit

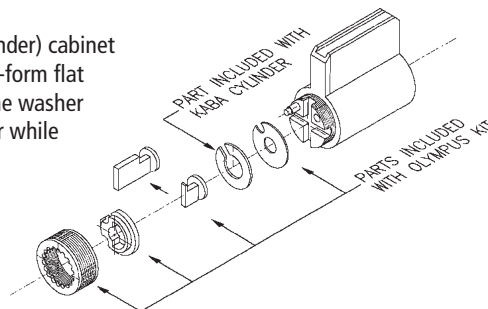
For use with Olympus 700LC and 800LC (less cylinder) cabinet locks. The conversion kit requires the use of the C-form flat washer supplied with the KABA-Peaks cylinder. The washer is needed to keep the Olympus tailpiece on center while operating the lock.

Use with the following cylinders

#### KABA-Peaks universal cylinder

#3400-XX-1099 (where "XX" denotes finish)

#### Mul-T-Lock cylinders



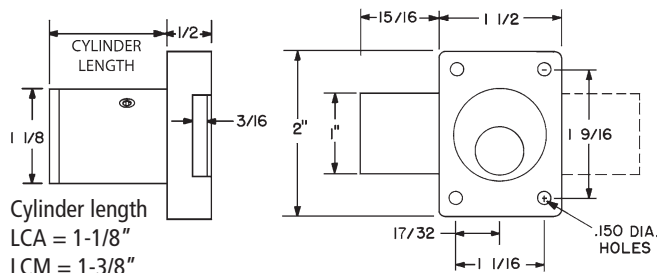
### 78-201 Series

Schlage C keyway cylinders

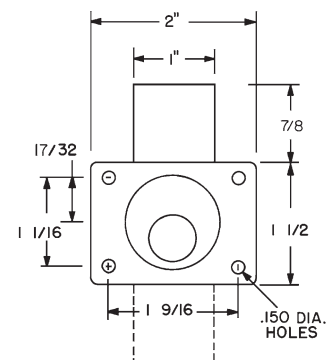
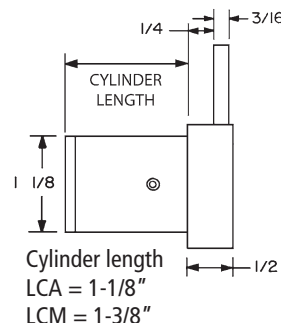


## DIMENSIONS

### 700LC Cabinet Door Lock



### 800LC Drawer Lock



\*Key-retaining handing: (See website for key-retaining handing chart)