

DCN SERIES

N Series: 3/4" Cam Lock

ANSI/BHMA Grade 1
E07261 | E07271

Woodwork Institute (WI)
acknowledged product

SPECIFICATIONS

Keying: Can be keyed together with other N Series locks

Cylinder length: Four sizes available (see table with dimensions on page 2)

Rekeyable: Easily rekeyable via cylinder retainer clip

ANSI/BHMA: Passed ANSI/BHMA A156.11

Grade 1 performance requirements. Equivalent to E07261 / E07271.

US Patent Nos: 5,038,589; 5,737,950

Body: Zinc die cast

Cylinder: Zinc die cast, pin tumbler

Standard function: Key removable in locked or unlocked position.

Key retaining function: Alternate key-retaining shifters are available separately for key removable in locked position only.

Cams: 2 reversible cams work in all positions

Face: 1" face covers splintering, no additional trim ring required

Finish: 26D, US3, 10B or US19

Packaged: Packed 10 per box

KEYING INFORMATION

Keyway: N Series (equivalent to National D4291 4-pin or D4292 5-pin system)

Keys: Includes 2 keys per lock

Stock keying: KD/KA - 4 pin standard

Stock KA#: 101, 103, 107, 915, 51001, 51002, 51003, 51004

Masterkeyed: 5 pin standard

Grand masterkeyed: Available

Keyblank 4-pin: KBN-4-NP

(equivalent to NA14, 1069L)

Keyblank 5-pin: KBN-5-NP

(equivalent to NA12, 1069LA)

INCLUDED ACCESSORIES

See page 2.

OPTIONAL ACCESSORIES

Alternate cams

Key retaining drawer cam shifter #DCNP-200-KR

Key retaining door cam shifter #DCNP-200-KDR

DCN

Keyway: N Series, National Keyway

Handing: Includes 2 cams that work in all handings (door or drawer)

DCN SERIES FEATURES

- Non-handed—Field reversible locking positions: right-hand, left-hand, vertical and inverted
- Only 2 cams required—Ships with reversible straight and offset cams that meet requirements of all locking positions
- Easy rekeyability—Allows for a quick installation and increased productivity
- Anti-rotation plate—Eliminates lock rotation, prevents loosening of fixing nut, and provides additional security in particleboard applications



AVAILABLE FINISHES



US26D



US3



US10B

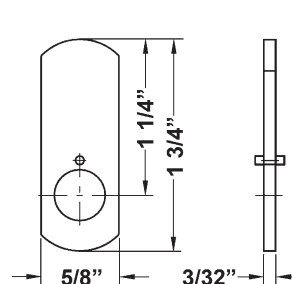


US19

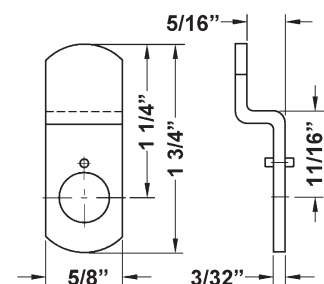
NEW

Now in flat black

INCLUDED CAMS



DCNP-100-SC
straight cam



DCNP-100-BC
offset reversible cam



WARNING: This product can expose you to chemicals including chromium, which is known to the State of California to cause cancer and birth defects or other reproductive harm. For more information go to www.P65Warnings.ca.gov.



OLYMPUS
LOCK INC.

DCN SERIES

N Series: 3/4" Cam Lock

ANSI/BHMA Grade 1
E07261 | E07271

Woodwork Institute (WI)
acknowledged product

OPTIONAL ACCESSORIES - See our website for a complete list of optional components.

Other Accessories

Key-retaining cam shifters

- For door function: DCNP-200-KDR
- For Drawer function: DCNP-200-KR

Washers

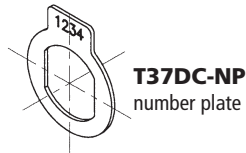
- Pronged wood washer: DCNP-SPW
- Self-adhesive clear plastic washer for mounting lock on glass: DCNP-GW

Finger Pull

- Finger pull: DCNP-300-FP

Number Plates

- T37DC-NP number plate



TRB7 Series Trim Collars

Finish: US26D



Optional Cams

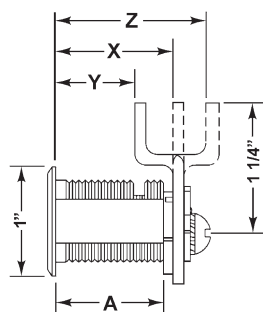
Note: Offset cams are reversible and can be used in either the inbent or outbent position.

Item	Description / Packed Each	Item	Description / Packed Each
DCNP-HD-875	7/8" long straight cam	DCNP-100-BC	1-1/4" long cam, 5/16" offset
DCNP-HD-1	1" long straight cam	DCNP-100-BC5	1-1/4" long cam, 1/2" offset
DCNP-100-SC	1-1/4" long straight cam	DCNP-100-HC1	1-1/2" long hook cam, 5/16" offset
DCNP-100-SC2	1-3/4" long straight cam	DCNP-100-HD	1-7/16" long cam, 1/2" offset
DCNP-100-SC3	1-1/2" long straight cam	DCNP-100-HD2	1-3/4" long cam, 5/16" offset
DCNP-100-LC	3" long straight cam	DCNP-100-HD3	1-1/8" long cam, 5/16" offset
		DCNP-100-LBC	1-1/2" long cam, 5/16" offset

Item	Description / Packed Each
DCNP-100-B1	Straight cam with oval cutout
DCNP-100-B2	U-shaped cam
DCNP-100-B3	Straight hook cam
DCNP-100-WB	Short cam / 90° offset arm

>> Visit our website www.olympuslock.com for complete dimension and descriptions of available optional cams.

DIMENSIONS | TYPICAL INSTALLATION



DIMENSIONS

	For Mat. Thickness	Straight Cam (X)	Inbent Cam (Y)	Outbent Cam (Z)	Cylinder Length (A)
DCN1	3/4"	1-1/16"	3/4"	1-3/8"	1"
DCN2	7/8"	1-3/16"	7/8"	1-1/2"	1-1/8"
DCN3	1-1/8"	1-7/16"	1-1/8"	1-3/4"	1-3/8"
DCN4	1-1/2"	1-13/16"	1-1/2"	2-1/8"	1-3/4"

MOUNTING CUTOUT

