

## Locks & File Frame for wood furniture & cabinets



# Welcome to CompX Timberline



## What are we all about?

- **Locks for Wood Furniture and Cabinets**

We can lock desks, credenzas, files, store fixtures, lockers, and cabinets of all types.

- **File Frame System for Hanging Files**

Completely engineered, attractive system which maximizes filing capabilities.

- **StealthLock®**

The 1st Keyless, Invisible Cabinet Locking System

- **Made in the USA**

Manufactured and assembled in Grayslake, IL.

- **High Quality & Great Service**

All locks are made from the finest materials ... Our customer service is the best!

- **Next Day Shipment**

Most items ship within one business day.

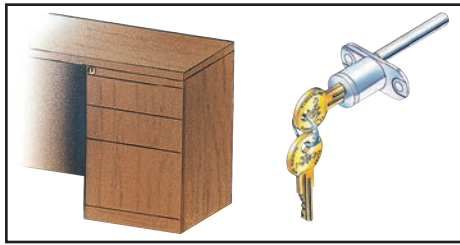


Want Samples?  
Need Help?  
Don't See What You Need?

**Call Us Today**  
**1-800-LOCKBAR**  
**or Email Us at**  
*timberlineorders@compx.com*



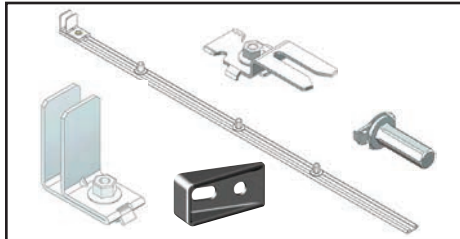
# LOCKING SYSTEMS FOR WOOD FURNITURE



**Front Gang Lock**  
..... 6-9



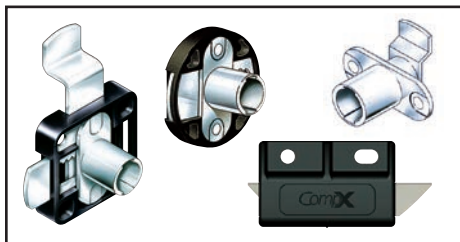
**Side Gang Locks  
& Central Locks**  
..... 10-11, 30



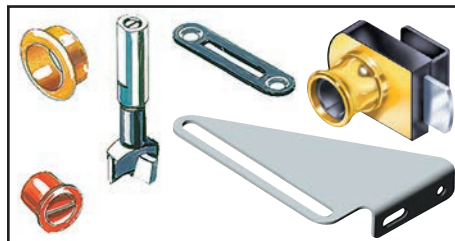
**Gang Lock  
Components and  
Custom Lockbar**  
..... 12-13



**Lateral File Locks  
and Anti-Tip Systems**  
..... 14-18



**Deadbolt Locks**  
..... 19-21  
**Cam Locks**  
..... 22-25  
**Double Door Latch**  
..... 26



**Strike Plates**  
..... 26-27  
**Glass Door Locks**  
..... 28-29  
**Accessories**  
..... 29



**StealthLock®**  
..... 31-33



**File Frame System**  
..... 34-35



**CompX Regulator**  
..... 13, 30

## Lock Finishes:



Polished  
Nickel  
LP-100



Old  
English  
LP-200



Black  
LP-300



Statuary  
Bronze  
LP-400



Polished  
Brass  
LP-500



Satin  
Nickel  
LP-700



White  
LP-800

## Lock Features:

- Small Diameter
- High Quality/Long Life
- 5 Disk Tumbler Lock Plug
- Solid Brass Keys
- Numbered on Face & Keys
- Over 500 Changes
- Master-Keyed
- Removable Lock Plug



# TIMBERLINE REMOVABLE LOCK PLUG SYSTEM

## Complete Keying Versatility

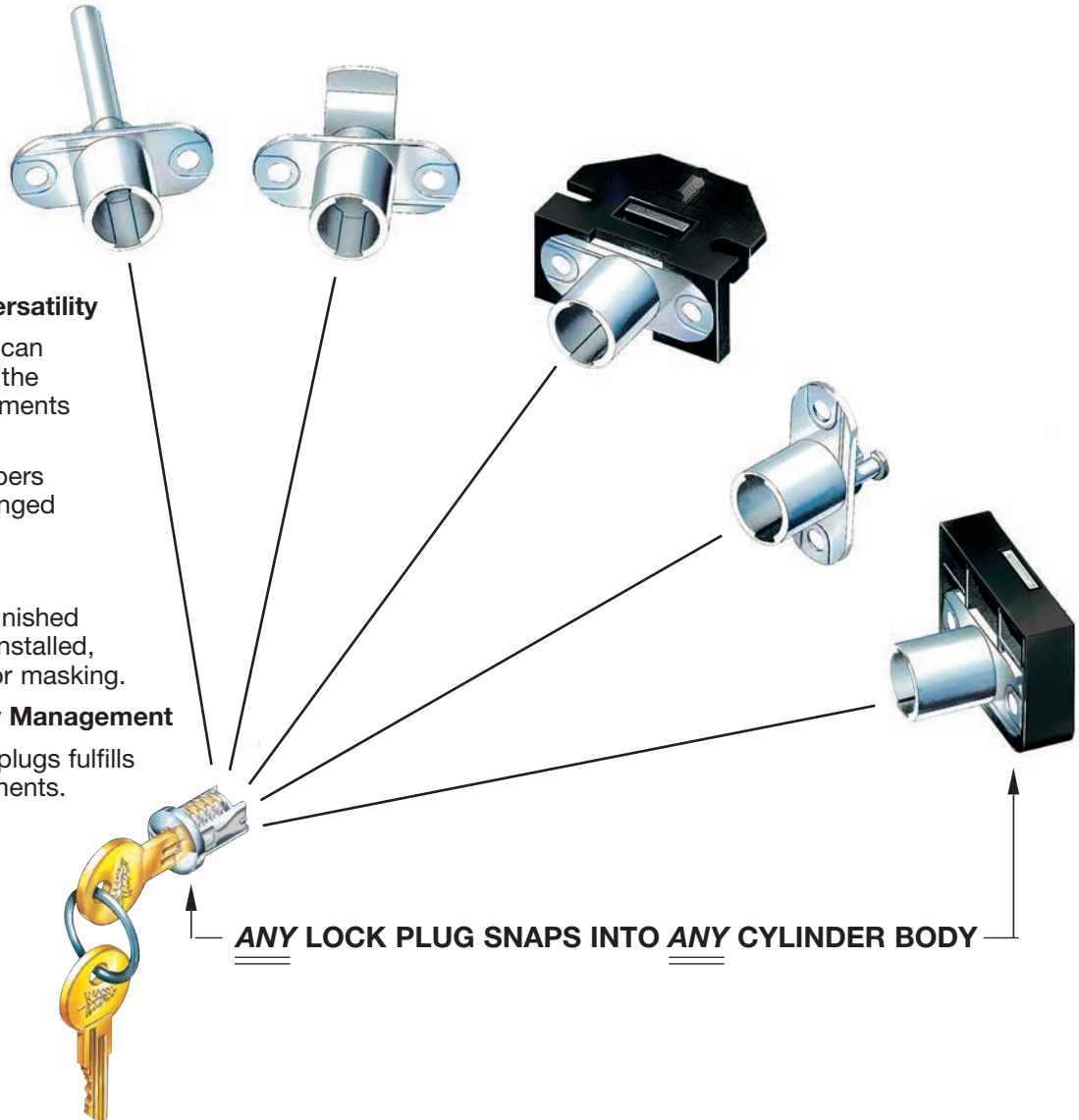
- In Plant...furniture can be keyed easily to the customer's requirements at any time.
- In Field...key numbers can be readily changed by your customer.

## Ease of Finishing

- Furniture may be finished without lock plug installed, eliminating need for masking.

## Simplified Inventory Management

- One stock of lock plugs fulfills all locking requirements.

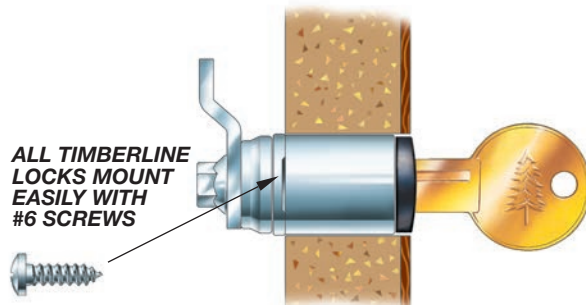


## Lock Plug + Cylinder Body = Assembled Lock



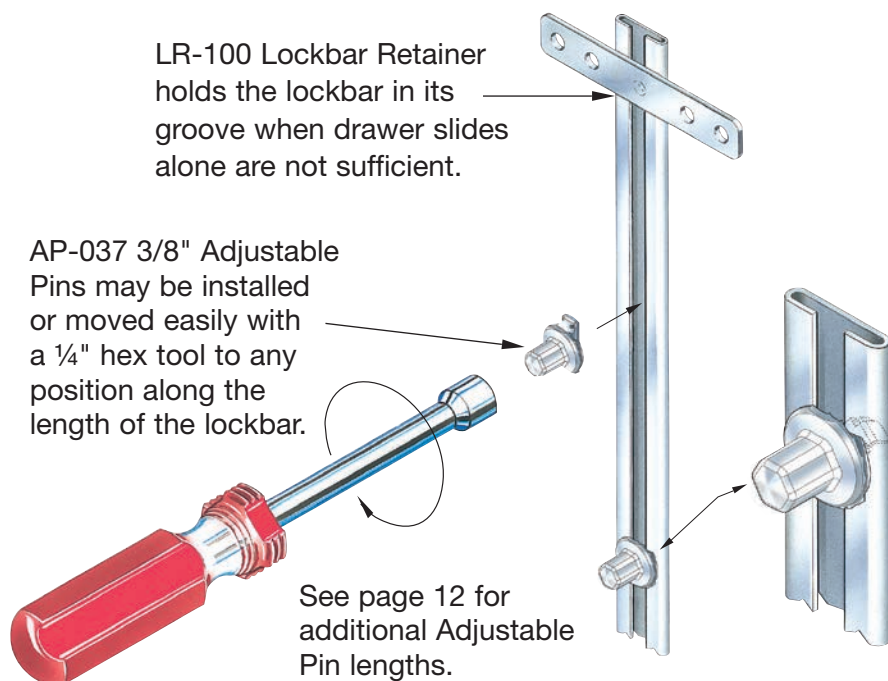
A change tool (P/N KY-500) is required to remove plugs. A firm clockwise turn removes the plug.

**WHEN ASSEMBLED, MOST TIMBERLINE LOCKS ARE DESIGNED FOR MOUNTING IN 3/4" OR 1" PANELS ... CHECK PRODUCT REQUIRED FOR APPLICATION OPTIONS**



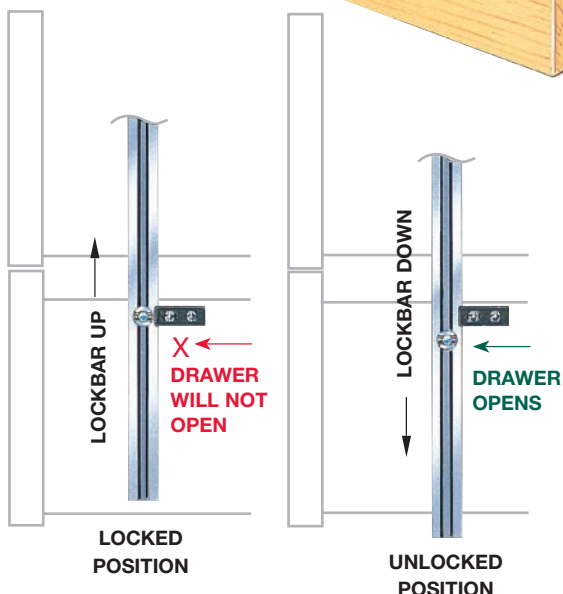
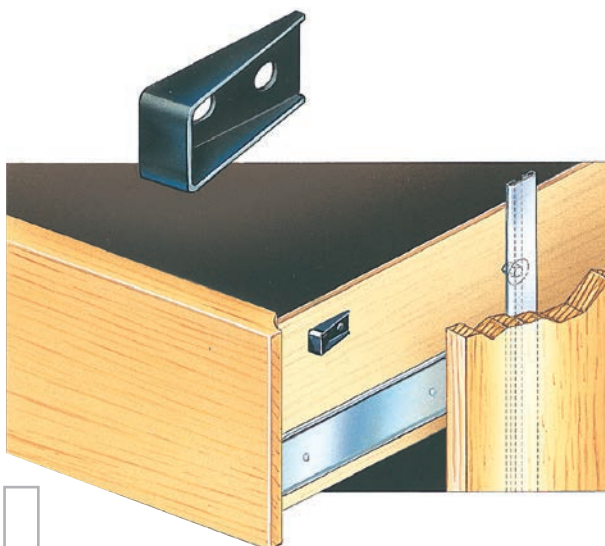


# ADJUSTABLE PIN INSTALLATION



## DRAWER LOCKING

DC-500 Drawer Locking Clips provide the preferred method of locking drawers with 1/2" drawer side clearance.



When used with the AP-037 3/8" Adjustable Pin, a strong, rigid lock is provided.

See page 12 for Drawer Clips designed for 3/4" or 7/8" drawer side clearance and for undermount slides.

## LOCKBAR PART NUMBERS AND SIZING

CompX Timberline Lockbar is ordered cut to the length needed. Cut to length Lockbar reduces labor and scrap and also improves quality / function of the gang and central lock systems.

Part Number LB-120:  
Lockbar with a length  
6.000" – 17.999"

Part Number LB-240:  
Lockbar with a length  
18.000" – 29.999"

Part Number LB-360:  
Lockbar with a length  
30.000" – 41.999"

Part Number LB-480:  
Lockbar with a length  
42.000" – 53.999"

When ordering the length of Lockbar, note the correct CompX Timberline part number on the purchase order.

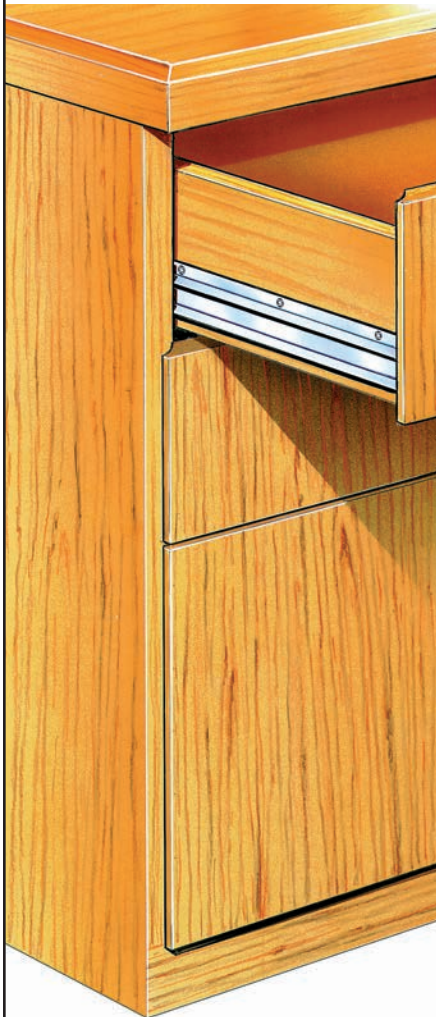
Example:  
LB-240 – 22.500"

**To choose the correct length of Lockbar, CompX Timberline recommends interior cabinet height (-) minus 1.000"**

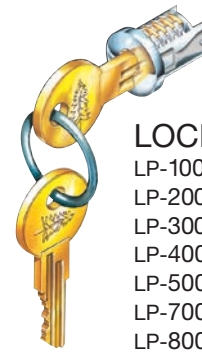
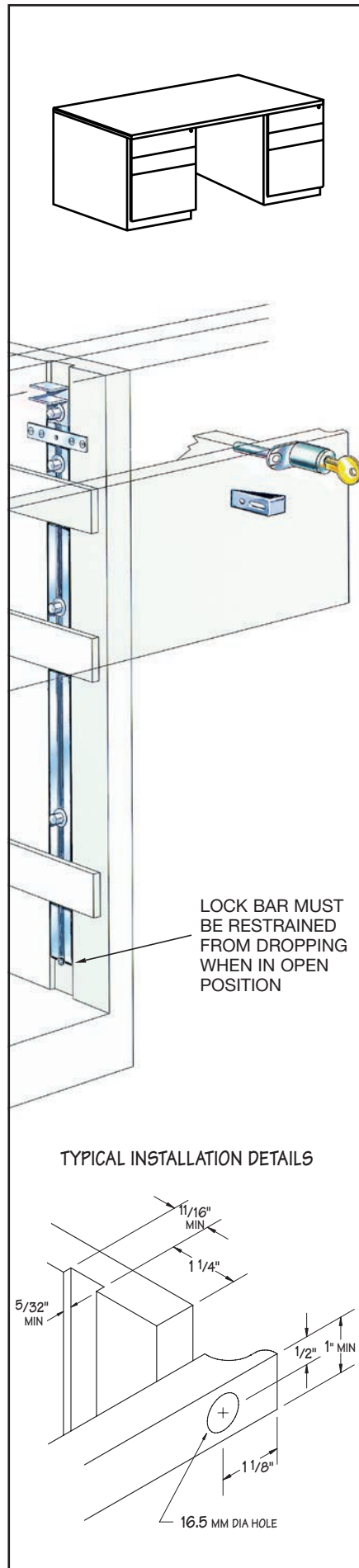
# SYSTEM 101

FRONT MOUNTED  
GANG LOCK FOR  
MULTIPLE DRAWERS

- LOCK MOUNTED IN  
DRAWER FRONT
- MINIMIZES INTERFERENCE  
WITH HANGING FILES



- FULL 1/2" LOCKBAR THROW
- FITS WITHIN 1/2" DRAWER  
SLIDE CLEARANCE
- MINIMAL MACHINING  
REQUIRED:
  - HOLE FOR LOCK
  - GROOVE FOR LOCKBAR
- SEE PAGE 12 WHEN USING  
SLIDES OTHER THAN 1/2"

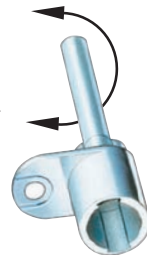


## LOCK PLUGS

LP-100 Nickel  
LP-200 Old English  
LP-300 Black  
LP-400 Statuary Bronze  
LP-500 Brass  
LP-700 Satin Nickel  
LP-800 White

CB-101  
3/4" MATERIAL

CB-101-1  
1" MATERIAL



LC-106  
TYPE 106  
LOCKBAR CLIP

LB-XXX  
LOCKBAR  
See page 5  
for sizing  
information



AP-037 3/8"  
ADJUSTABLE PIN



LR-100  
LOCKBAR RETAINER



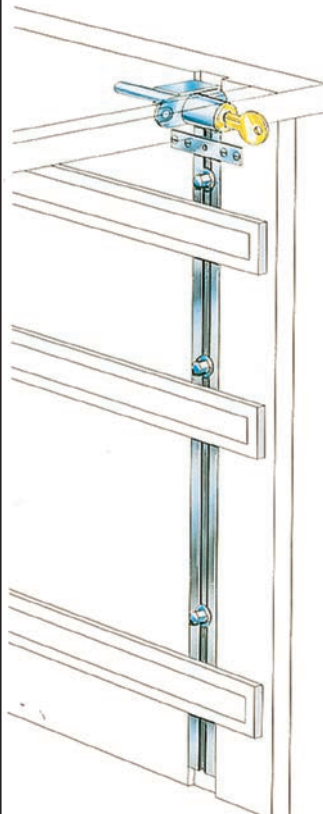
DC-500 DRAWER LOCKING CLIP



# SYSTEM 100

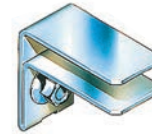
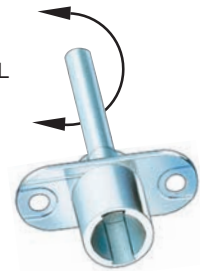


- LOCK MOUNTED  
IN FIXED RAIL



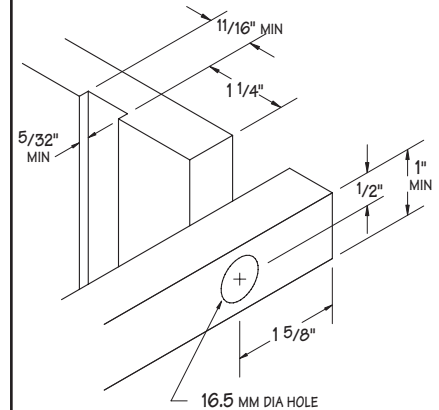
CB-100  
3/4" MATERIAL

CB-100-1  
1" MATERIAL

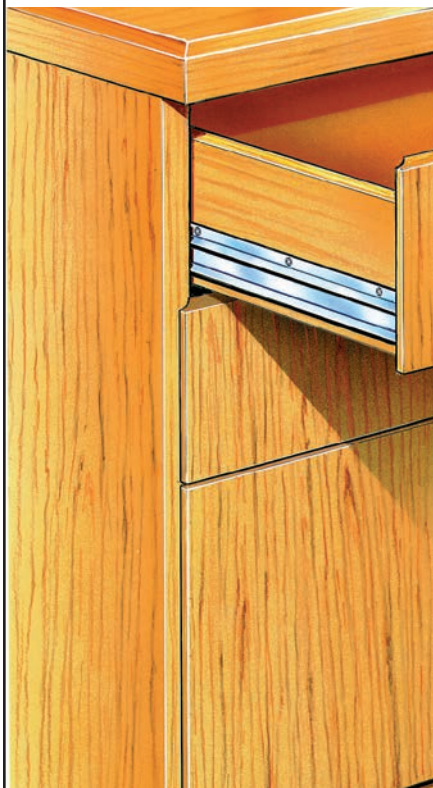


LC-100  
TYPE 100  
LOCKBAR CLIP

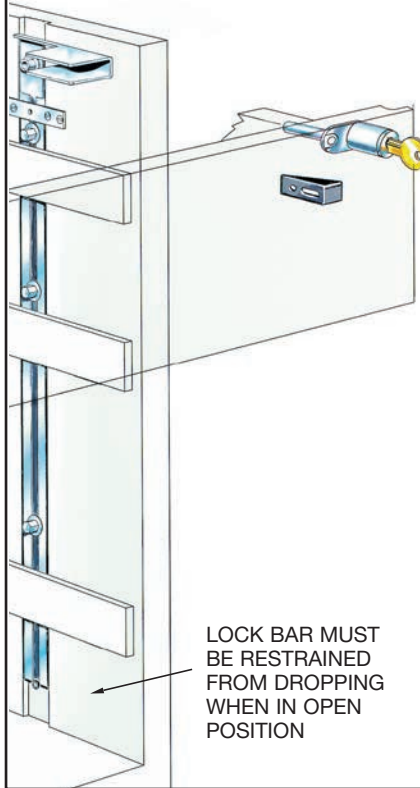
TYPICAL INSTALLATION DETAILS



# SYSTEM 104



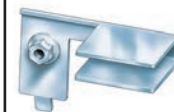
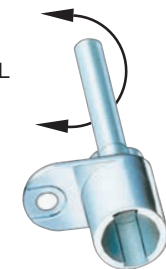
- LOCKBAR LOCATED  
FURTHER BACK IN CASE  
- FOR USE WITH 32MM  
CABINET CONSTRUCTION



LOCK BAR MUST  
BE RESTRAINED  
FROM DROPPING  
WHEN IN OPEN  
POSITION

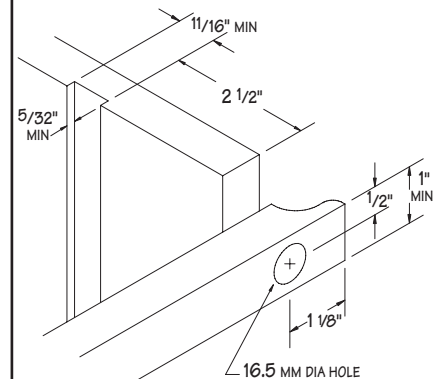
CB-101  
3/4" MATERIAL

CB-101-1  
1" MATERIAL



EXTENDED  
LOCKBAR CLIP  
LC-104 (RIGHT HAND)  
LC-114 (LEFT HAND)

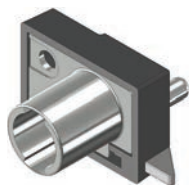
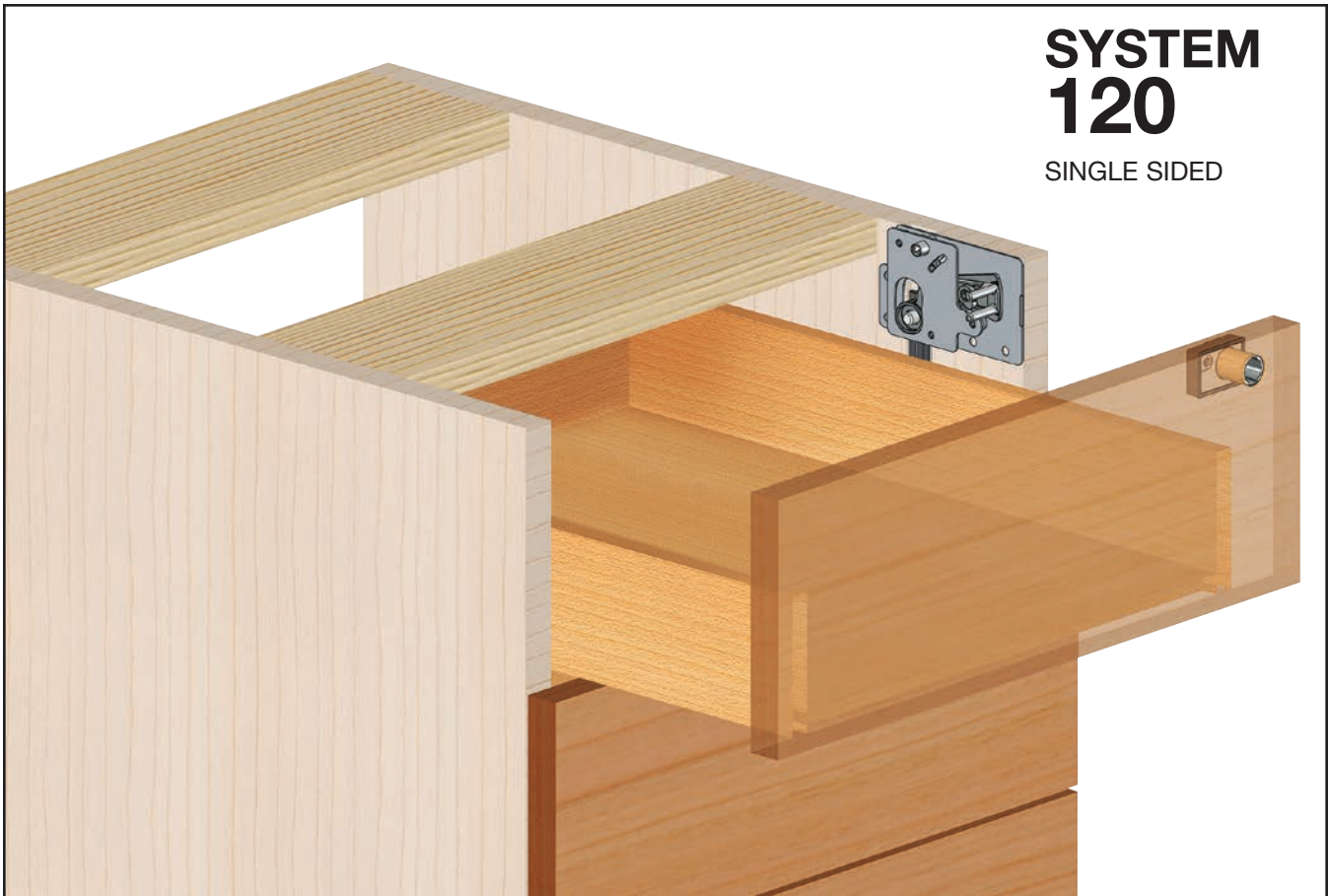
TYPICAL INSTALLATION DETAILS



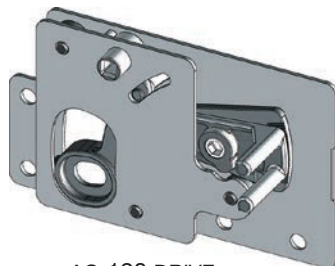


# SYSTEM 120

SINGLE SIDED



CB-120 CYLINDER BODY



AC-120 DRIVE  
ACTUATOR



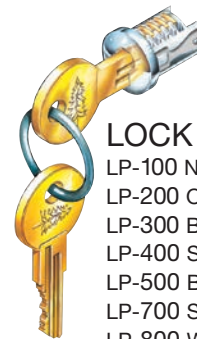
AP-037 3/8"  
ADJUSTABLE PIN



DC-500 DRAWER  
LOCKING CLIP

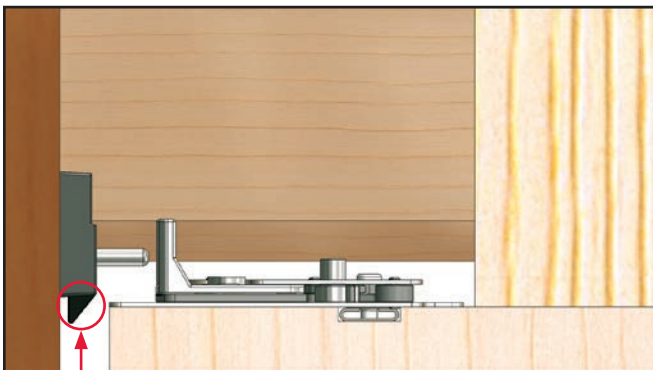


LB-XXX  
LOCKBAR  
See page 5  
for sizing  
information

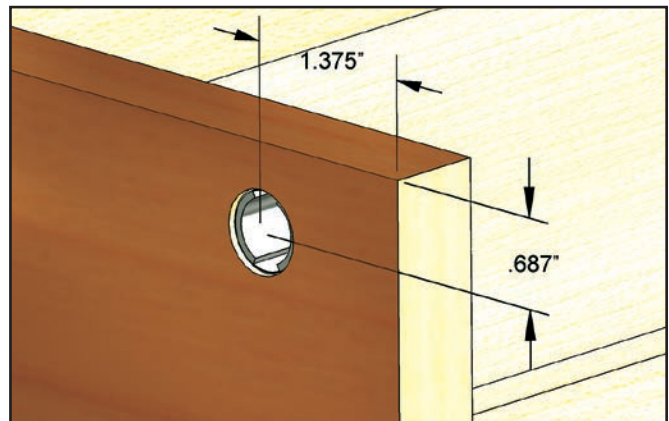


## LOCK PLUGS

LP-100 Nickel  
LP-200 Old English  
LP-300 Black  
LP-400 Statuary Bronze  
LP-500 Brass  
LP-700 Satin Nickel  
LP-800 White



Assure-Sync feature keeps the lock and actuator position synchronized. Low profile pin cam keeps lock from interfering with the drawer box.



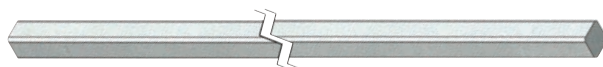
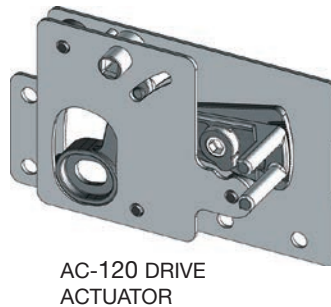
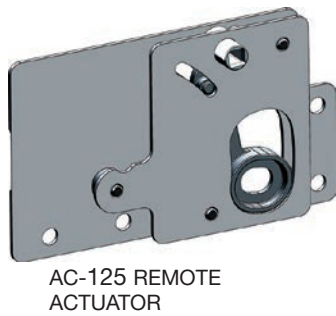
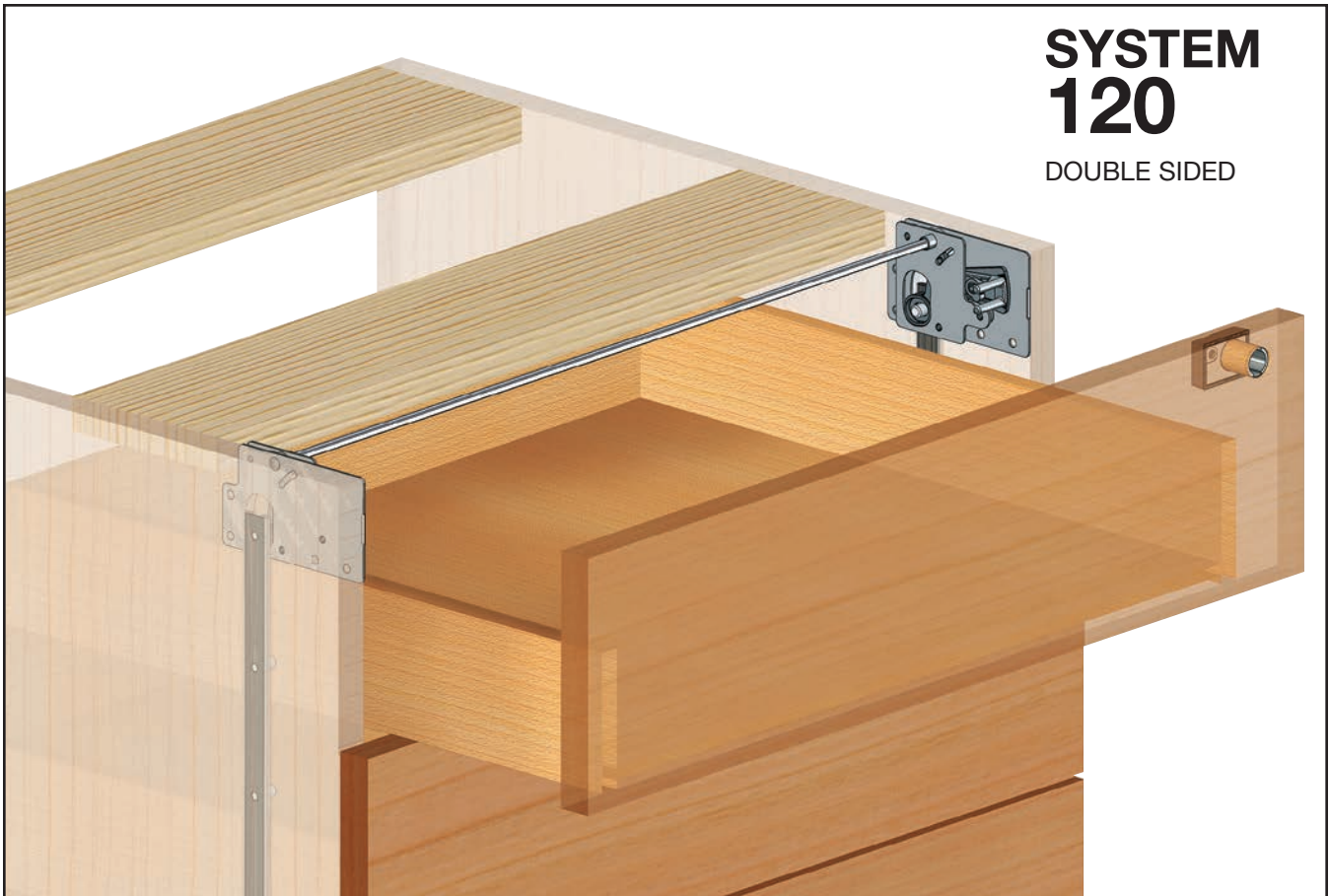
Reference dimensions for lock hole with full overlay drawer and 3/4" end panel.





# SYSTEM 120

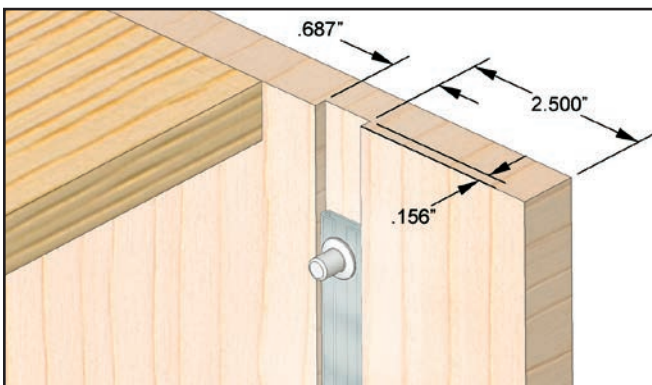
DOUBLE SIDED



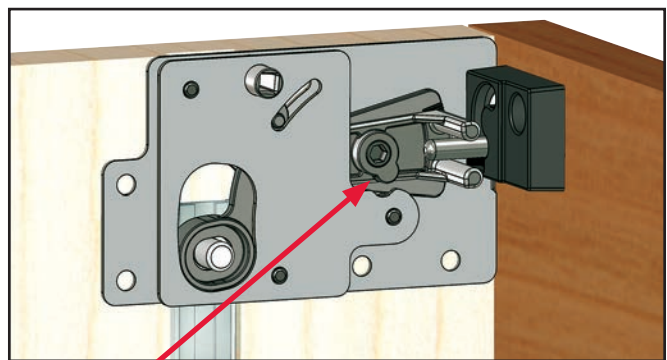
SS-360-36"  
SQUARE SHAFT



AP-037 3/8"  
ADJUSTABLE PIN



Reference dimensions for end panel with full overlay drawer. Lockbar location is the same for the AC-120 & AC-125 actuators.

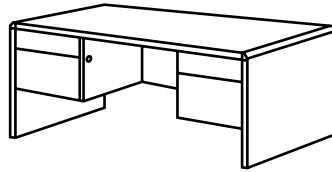


Lock arm adjusts vertically  $\pm 3/16$ " for ease of alignment. Lock arm adjusts with  $5/32$ " hex wrench. Low profile actuator fits within  $1/2$ " drawer suspension.

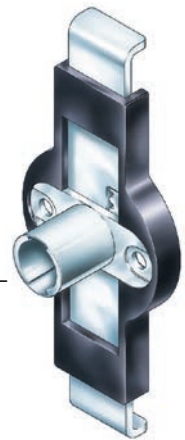


# SYSTEM 270

SIDE MOUNTED GANG LOCK  
FOR TWO DRAWERS

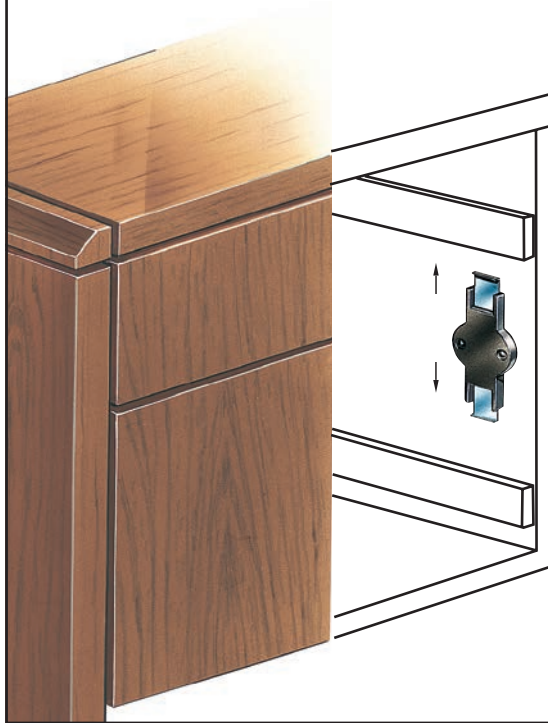


DC-500  
DRAWER  
LOCKING  
CLIP

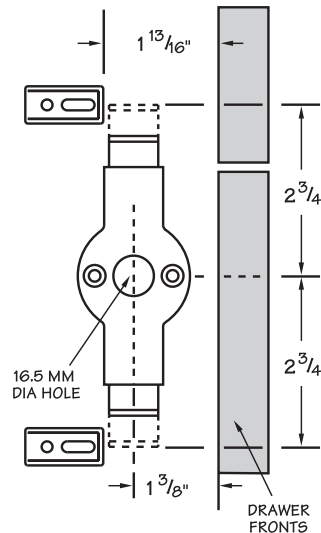


CB-270  
3/4" MATERIAL

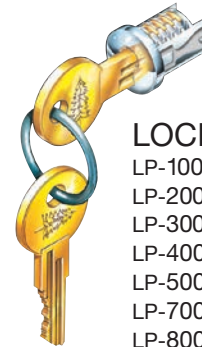
CB-270-1  
1" MATERIAL



## TYPICAL INSTALLATION DETAILS



- FULL 1/2" THROW
- FITS WITHIN 1/2" DRAWER SLIDE CLEARANCE
- LOCK HOLE ONLY MACHINING REQUIRED

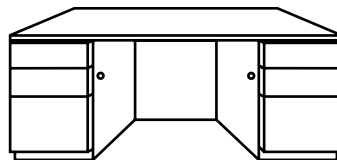


## LOCK PLUGS

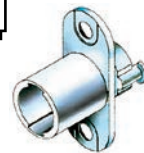
LP-100 Nickel  
LP-200 Old English  
LP-300 Black  
LP-400 Statuary Bronze  
LP-500 Brass  
LP-700 Satin Nickel  
LP-800 White

# SYSTEM 150

SIDE MOUNTED GANG LOCK  
FOR MULTIPLE DRAWERS



DC-500  
DRAWER  
LOCKING  
CLIP



CB-150  
3/4" MATERIAL

CB-150-1  
1" MATERIAL



LC-150  
TYPE 150  
LOCKBAR CLIP

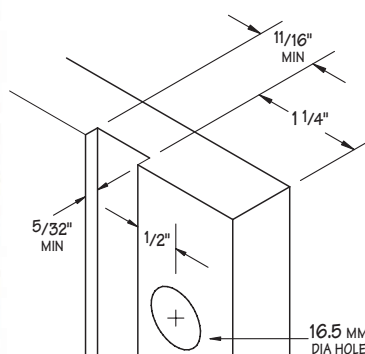


LR-100  
LOCKBAR RETAINER

LB-XXX  
LOCKBAR  
See page 5  
for sizing  
information



## TYPICAL INSTALLATION DETAILS



- FULL 1/2" LOCKBAR THROW
- FITS WITHIN 1/2" DRAWER SLIDE CLEARANCE
- MINIMAL MACHINING REQUIRED:
  - HOLE FOR LOCK
  - GROOVE FOR LOCKBAR
- SEE PAGE 12 IF USING SLIDES OTHER THAN 1/2"





# CENTRAL LOCKING SYSTEM 500



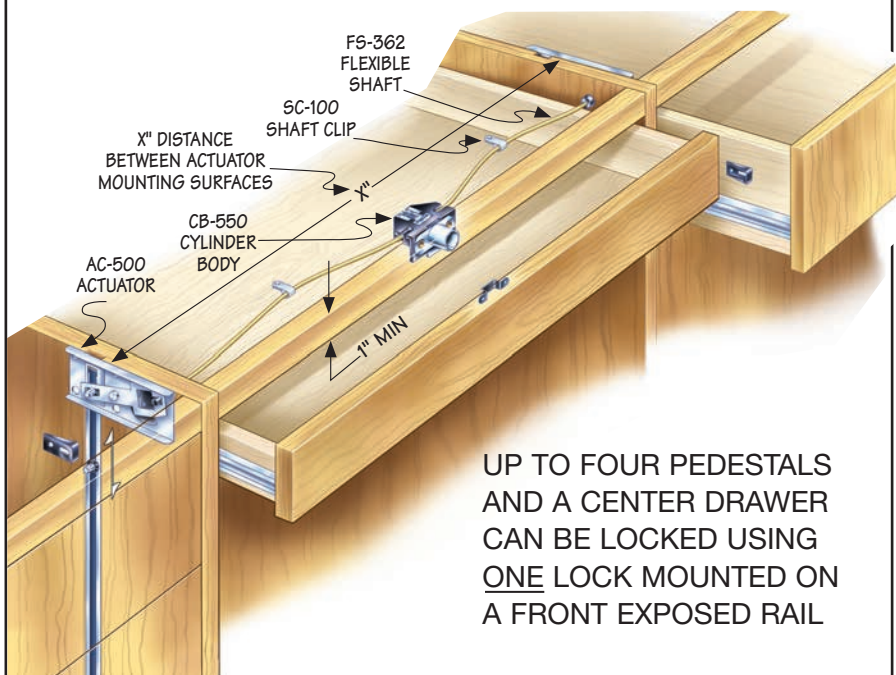
**A COMPLETE  
SYSTEM FOR  
CENTRAL  
LOCKING BOTH  
DESKS AND  
CREDENZAS.**

**Components are  
available for single  
sided units and  
credenzas with  
double doors.**

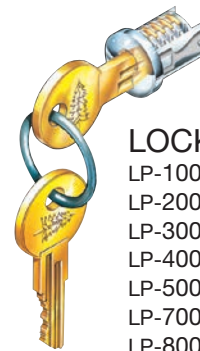


Special cylinder bodies  
and flexible shafts available  
for single sided desks and  
double door credenzas.

## TYPICAL INSTALLATION

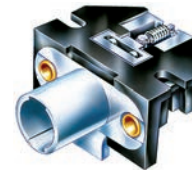


**UP TO FOUR PEDESTALS  
AND A CENTER DRAWER  
CAN BE LOCKED USING  
ONE LOCK MOUNTED ON  
A FRONT EXPOSED RAIL**

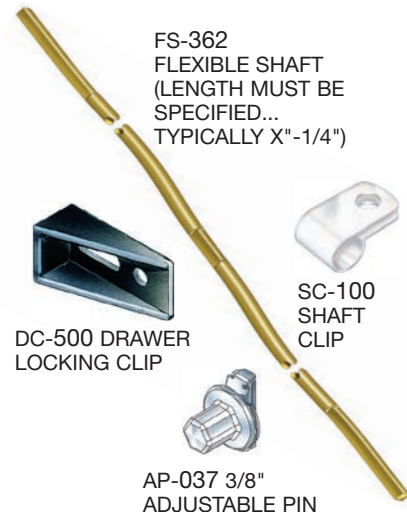


### LOCK PLUGS

LP-100 Nickel  
LP-200 Old English  
LP-300 Black  
LP-400 Statuary Bronze  
LP-500 Brass  
LP-700 Satin Nickel  
LP-800 White



CB-550  
3/4" MATERIAL  
CB-550-1  
1" MATERIAL



FS-362  
FLEXIBLE SHAFT  
(LENGTH MUST BE  
SPECIFIED...  
TYPICALLY X"-1/4")



DC-500 DRAWER  
LOCKING CLIP



SC-100  
SHAFT  
CLIP



AP-037 3/8"  
ADJUSTABLE PIN



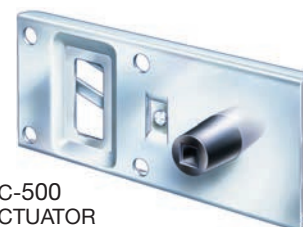
LB-XXX  
LOCKBAR  
See page 5  
for sizing  
information



SP-250  
STRIKE  
PLATE

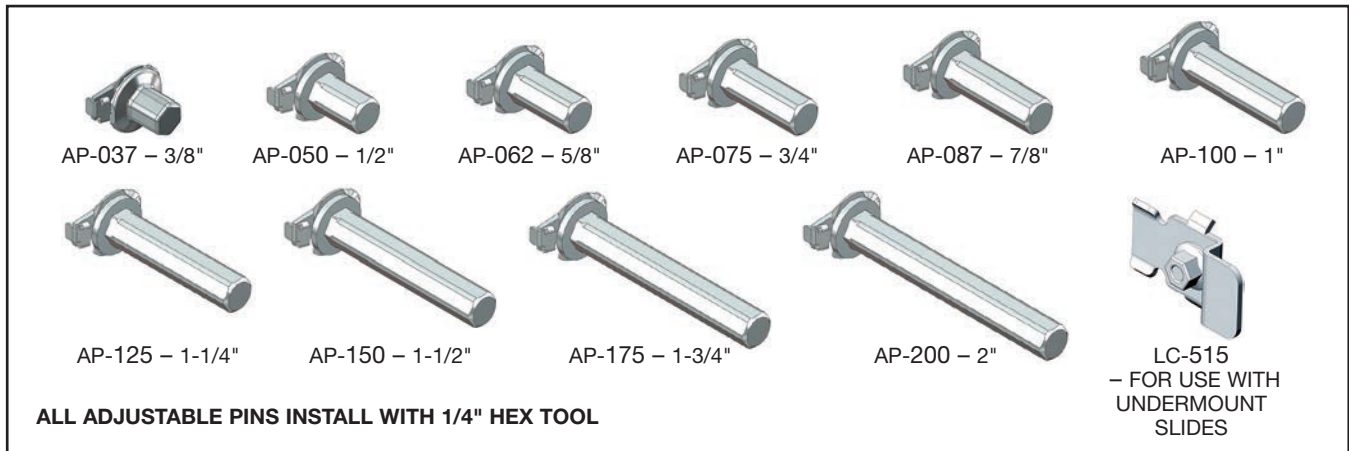


LR-100  
LOCKBAR RETAINER

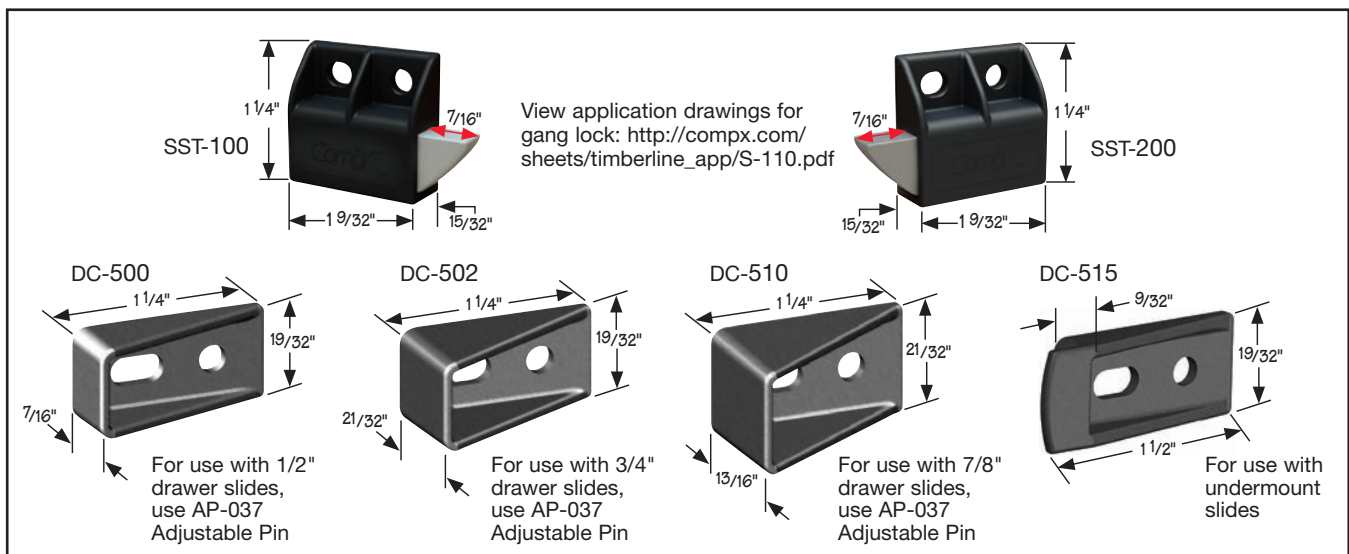


AC-500  
ACTUATOR

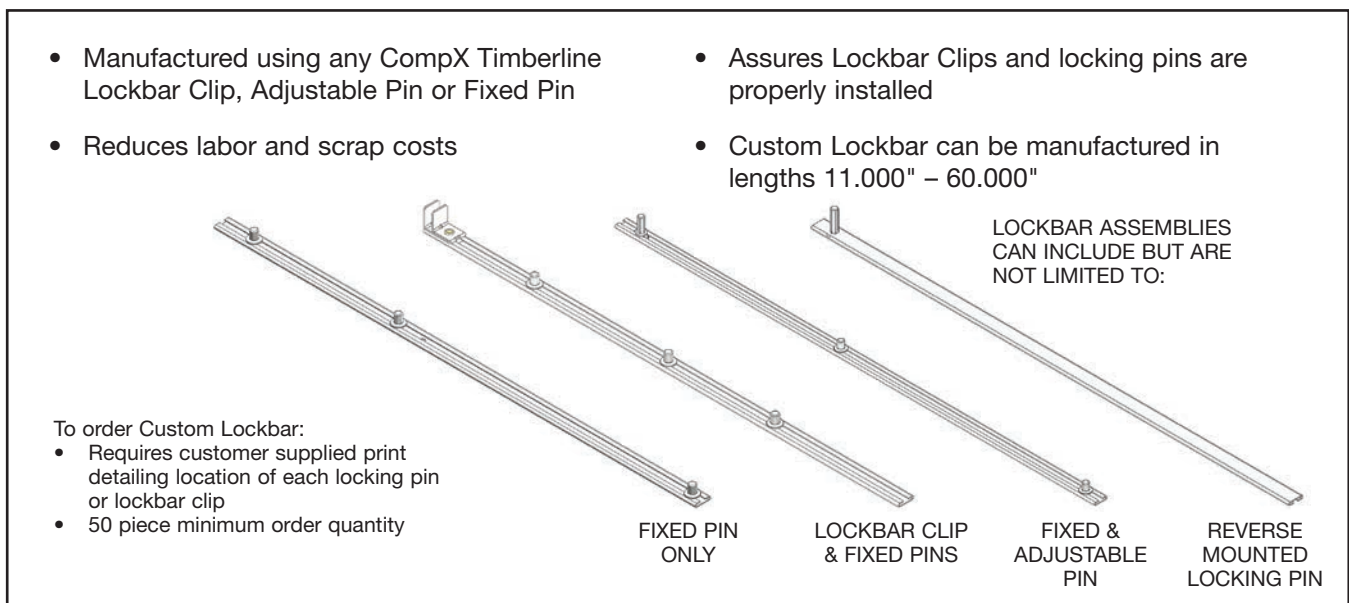
# ADJUSTABLE PINS



# DRAWER CLIPS



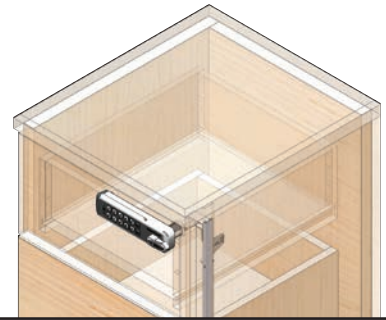
# CUSTOM LOCKBARS





# COMPX REGULATOR FOR GANG LOCKING

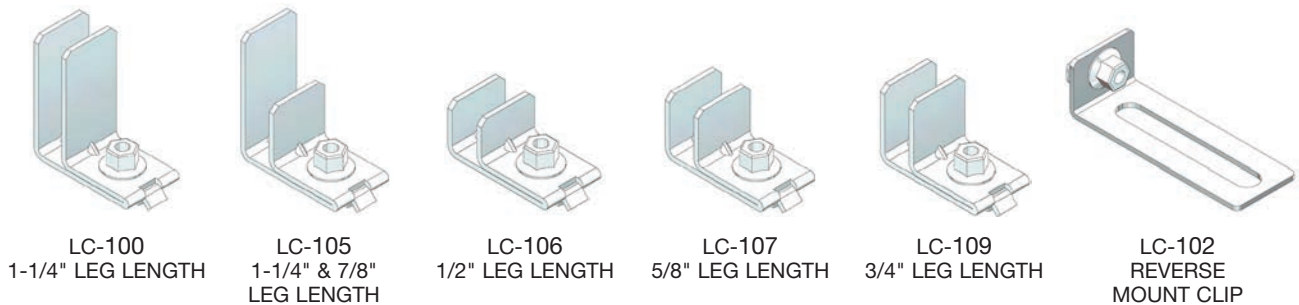
- Allows keyless control of gang lock SYS-100, 101 and 104
- See page B140 at [compX.com/sheets/timberline\\_app/B-140.pdf](http://compX.com/sheets/timberline_app/B-140.pdf) for further information
- See page 30 for more information on CompX RegulatorR



## LOCKBAR CLIPS

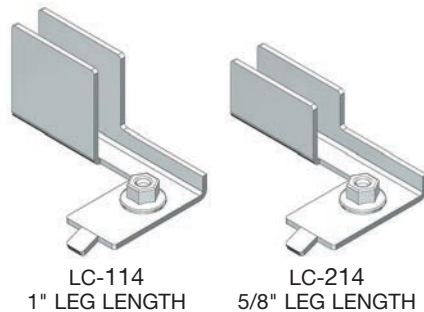
For more information and installation specifications for Lockbar Clips, visit <http://compX.com/instructions.html> and view the CompX Timberline Application Drawings B-100 – C-115

### FRONT MOUNT – STANDARD CASE CONSTRUCTION:

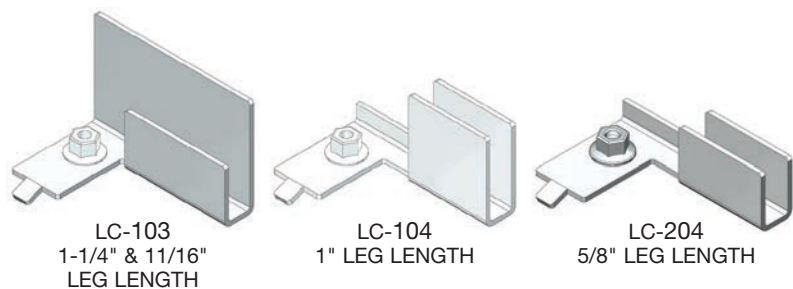


### FRONT MOUNT – 32MM CASE CONSTRUCTION:

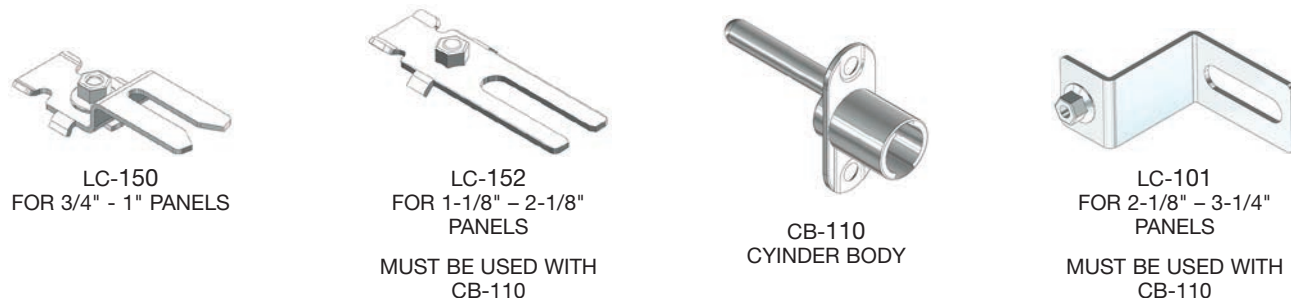
#### LEFT HAND MOUNT:



#### RIGHT HAND MOUNT:



### SIDE MOUNT:



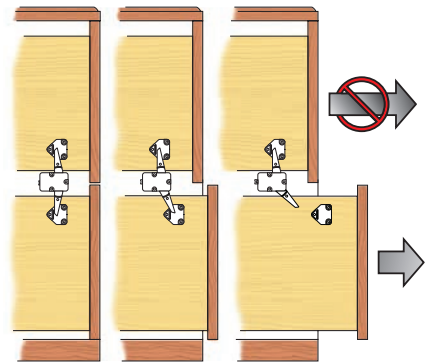
## ANTI-TIP INTERLOCK SYSTEM 400

2-DRAWER LATERAL  
(NO LOCK)



## ANTI-TIP INTERLOCK SYSTEM 400

3-DRAWER BOX, BOX, FILE  
(NO LOCK)



WHEN EITHER DRAWER IS PULLED OPEN, THE DRAWER CLIP ON THAT DRAWER MOVES THE SNAPPER INTO A LOCKED POSITION. THIS PREVENTS ANY FURTHER DRAWERS FROM BEING OPENED.

- Prevents more than one drawer from being opened at a time
- Meets BIFMA standards for strength and durability
- All components are surface mounted
- Wide tolerance accommodation
- Easy to mount and low cost
- Accommodates 1/2" or 3/4" drawer slide clearance

## SYSTEM 400 COMPONENTS

For more information and installation specifications for System 400, visit <http://compX.com/instructions.html> and view CompX Timberline Application Drawing F-120



SN-400  
ANTI-TIP  
SNAPPER



SN-403



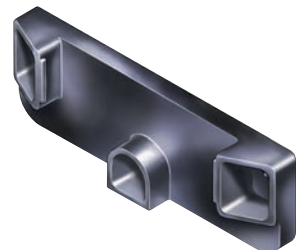
SN-405



SN-410  
LINKAGE  
ARM



DC-400  
DRAWER CLIP



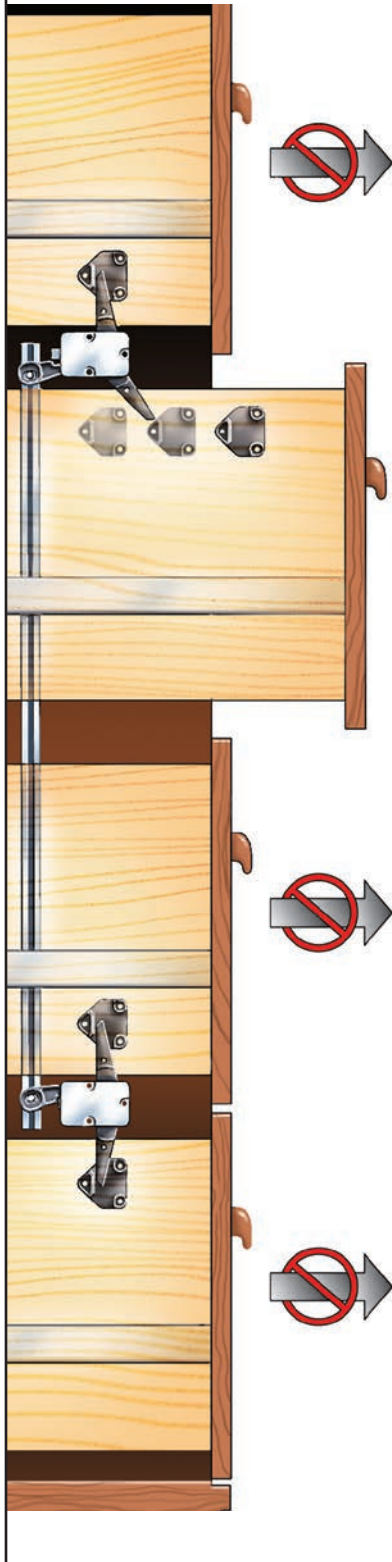
DC-410  
NARROW  
DRAWER  
CLIP FOR  
1/2" DRAWER  
SLIDES

DC-411  
NARROW  
DRAWER  
CLIP FOR  
3/4" DRAWER  
SLIDES



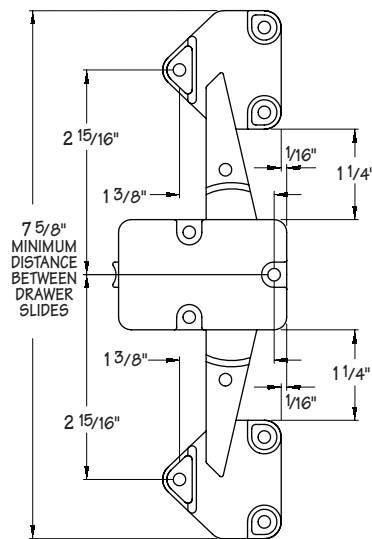
# ANTI-TIP INTERLOCK SYSTEM 400

3 OR 4-DRAWER LATERAL  
(NO LOCK)



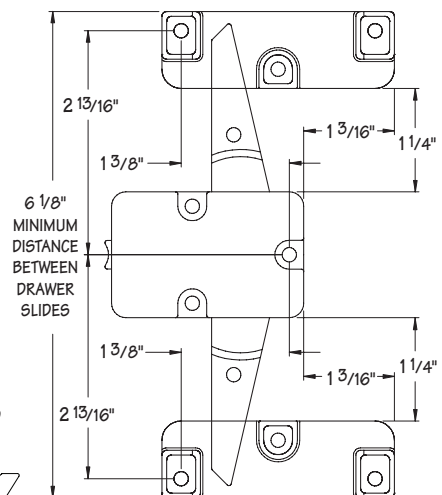
## TYPICAL INSTALLATION DETAILS

TWO DRAWER DC-400

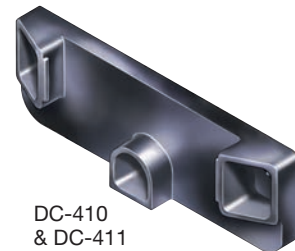
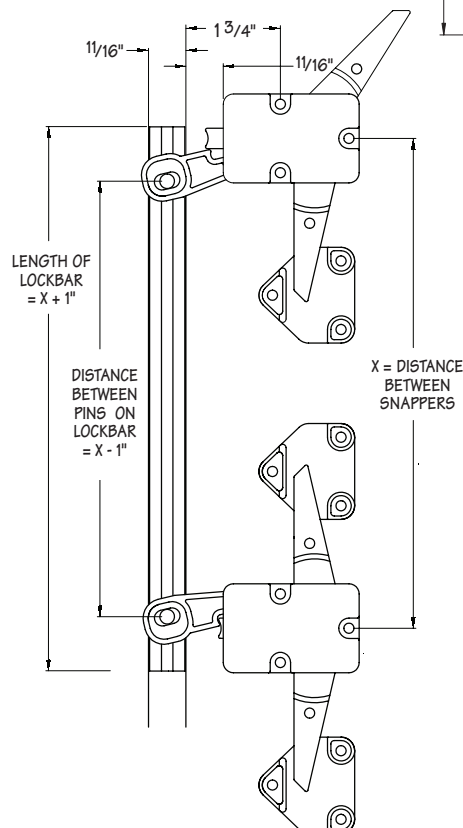


DC-400  
DRAWER CLIP

DC-410 OR DC-411



LINKAGE BAR FOR THREE  
OR FOUR DRAWER APPLICATIONS  
DC-400 SHOWN



DC-410  
& DC-411  
NARROW  
DRAWER CLIPS

FOR USE WHEN LESS  
SPACE IS ALLOWABLE  
BETWEEN DRAWER  
SLIDES

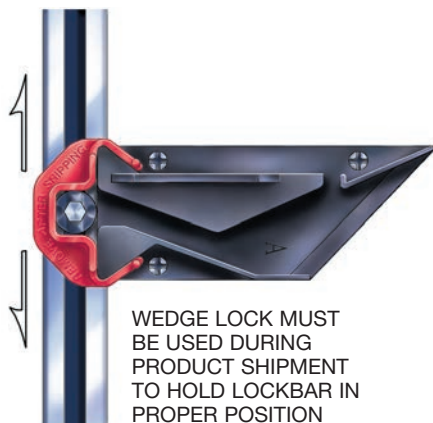


SN-410  
LINKAGE  
ARM

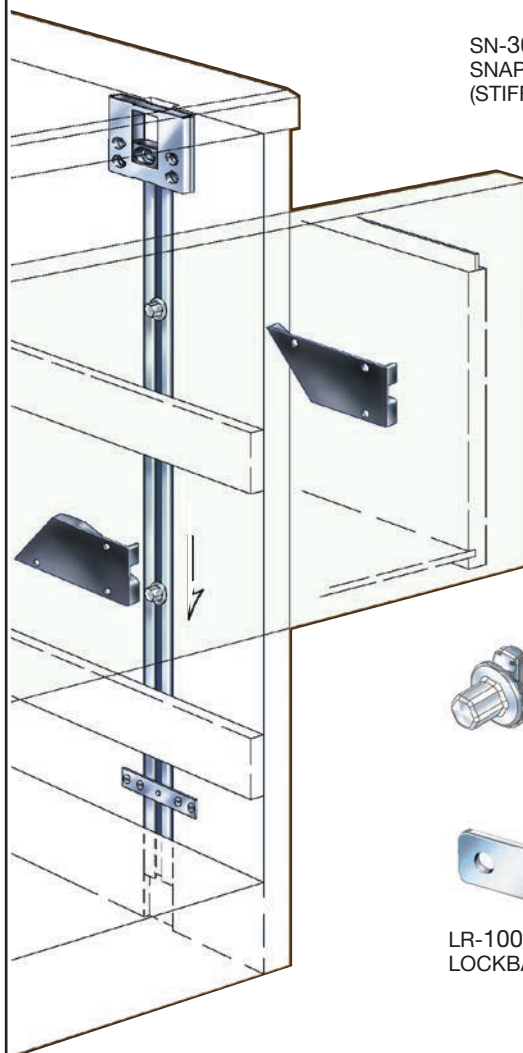


# ANTI-TIP INTERLOCK SYSTEM 350

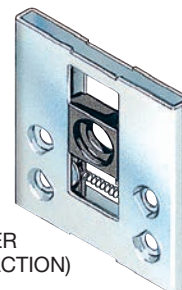
(NO LOCK)



WEDGE LOCK MUST  
BE USED DURING  
PRODUCT SHIPMENT  
TO HOLD LOCKBAR IN  
PROPER POSITION



SN-300  
SNAPPER  
(STIFF ACTION)



LB-XXX  
LOCKBAR  
See page 5  
for sizing  
information

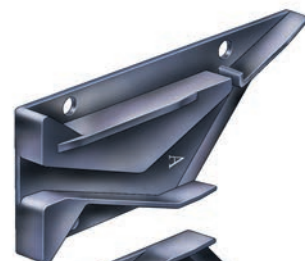


AP-037 3/8"  
ADJUSTABLE PIN



LR-100  
LOCKBAR RETAINER

WD-21A  
ANTI-TIP  
WEDGE TYPE A



WD-100  
WEDGE LOCK

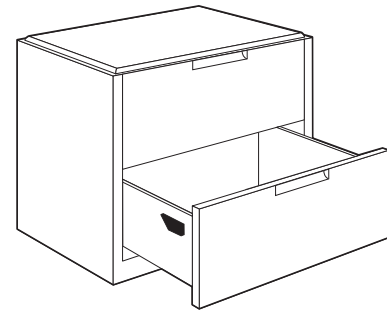
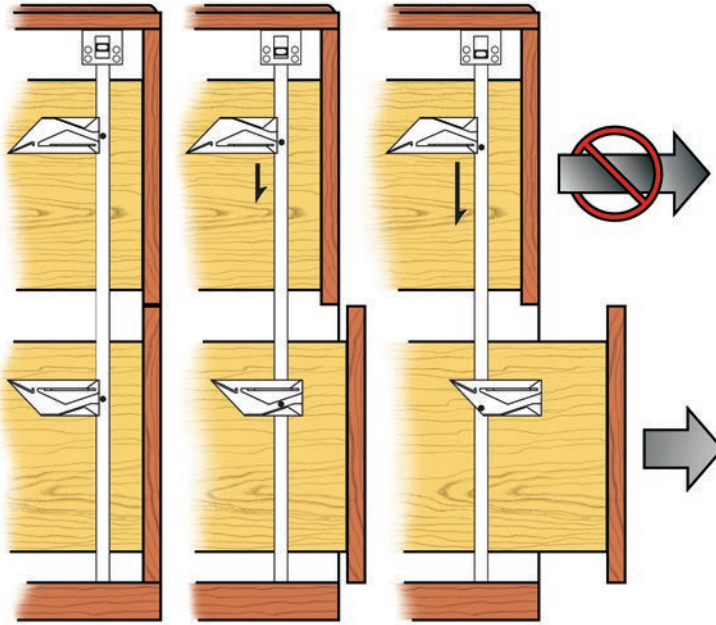


WD-21B  
ANTI-TIP  
WEDGE TYPE B



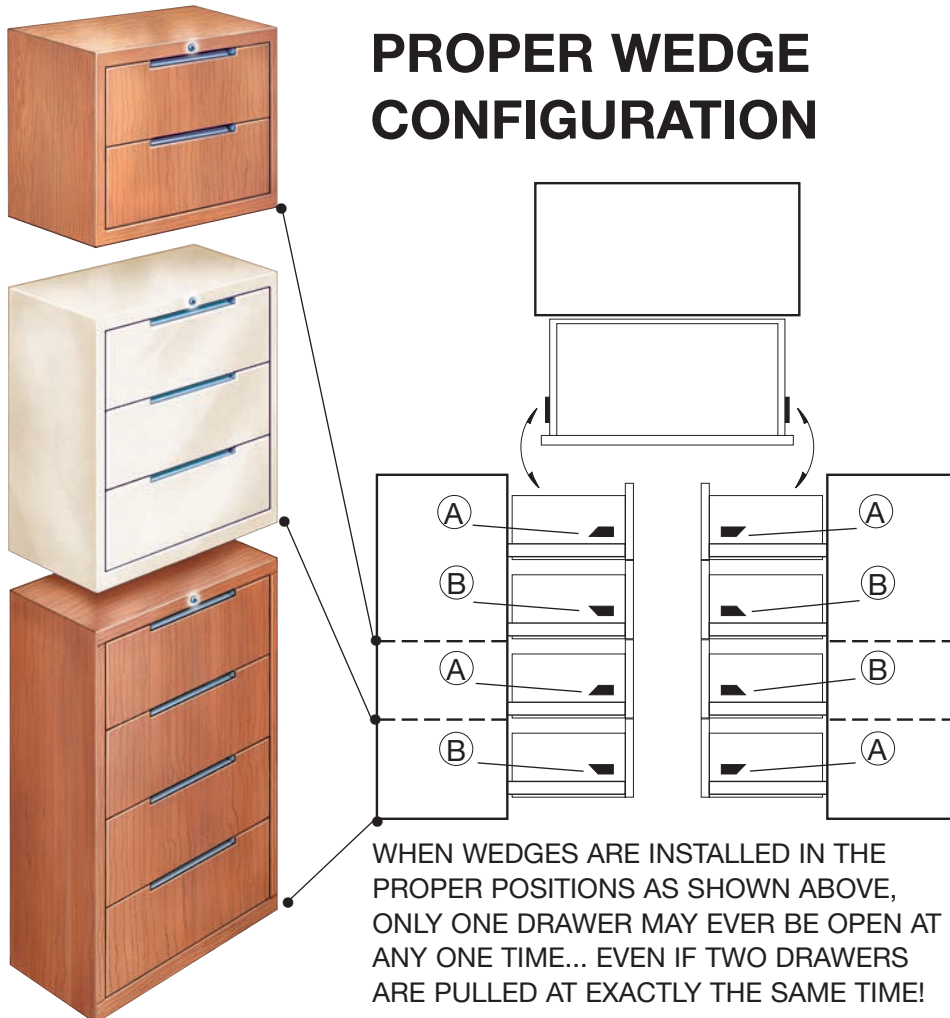


# ANTI-TIP INTERLOCK FUNCTION



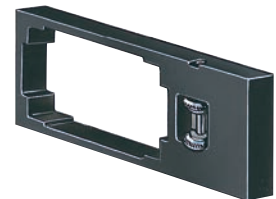
WHEN ANY DRAWER IS PULLED OPEN, THE WEDGES ON THAT DRAWER MOVE THE LOCKBAR INTO A LOCKED POSITION... THEREBY PREVENTING ANY FURTHER DRAWERS FROM BEING OPENED

## PROPER WEDGE CONFIGURATION

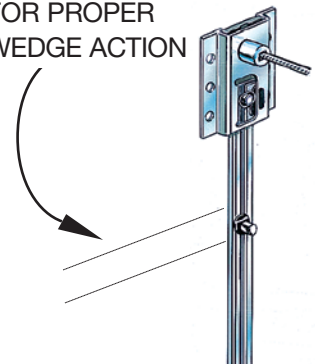


## TL-200 WEDGE/PIN MARKING TOOL

REQUIRED FOR PROPER INSTALLATION

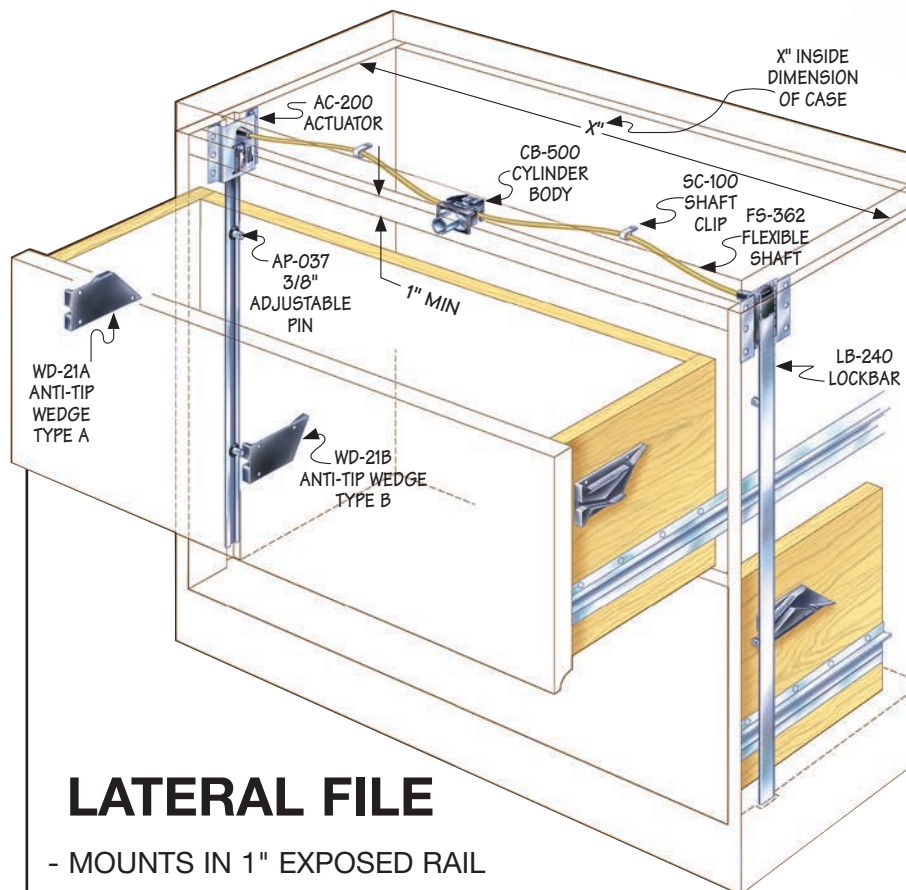


ACCURATELY MARKS PIN POSITION FOR PROPER WEDGE ACTION



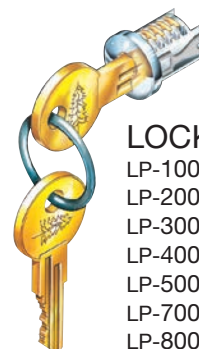
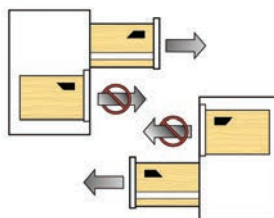
# LATERAL FILE LOCK/INTERLOCK SYSTEM 300

LOCKS WIDE  
DRAWERS ON  
BOTH SIDES AND  
PROVIDES ANTI-  
TIP INTERLOCK



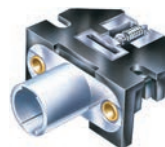
## LATERAL FILE

- MOUNTS IN 1" EXPOSED RAIL
- ANTI-TIP INTERLOCK HELPS PREVENT ACCIDENTAL TIPPING OF FILE UNIT
- SEE PROPER WEDGE CONFIGURATION ON PAGE 14

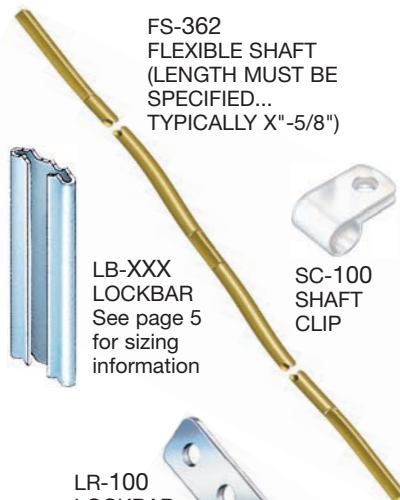


### LOCK PLUGS

LP-100 Nickel  
LP-200 Old English  
LP-300 Black  
LP-400 Statuary Bronze  
LP-500 Brass  
LP-700 Satin Nickel  
LP-800 White



CB-500  
3/4" MATERIAL  
CB-500-1  
1" MATERIAL



FS-362  
FLEXIBLE SHAFT  
(LENGTH MUST BE  
SPECIFIED...  
TYPICALLY X"-5/8")



LB-XXX  
LOCKBAR  
See page 5  
for sizing  
information



SC-100  
SHAFT  
CLIP

LR-100  
LOCKBAR  
RETAINER

WD-21A  
ANTI-TIP  
WEDGE TYPE A



AP-037 3/8"  
ADJUSTABLE PIN

WD-21B  
ANTI-TIP  
WEDGE TYPE B

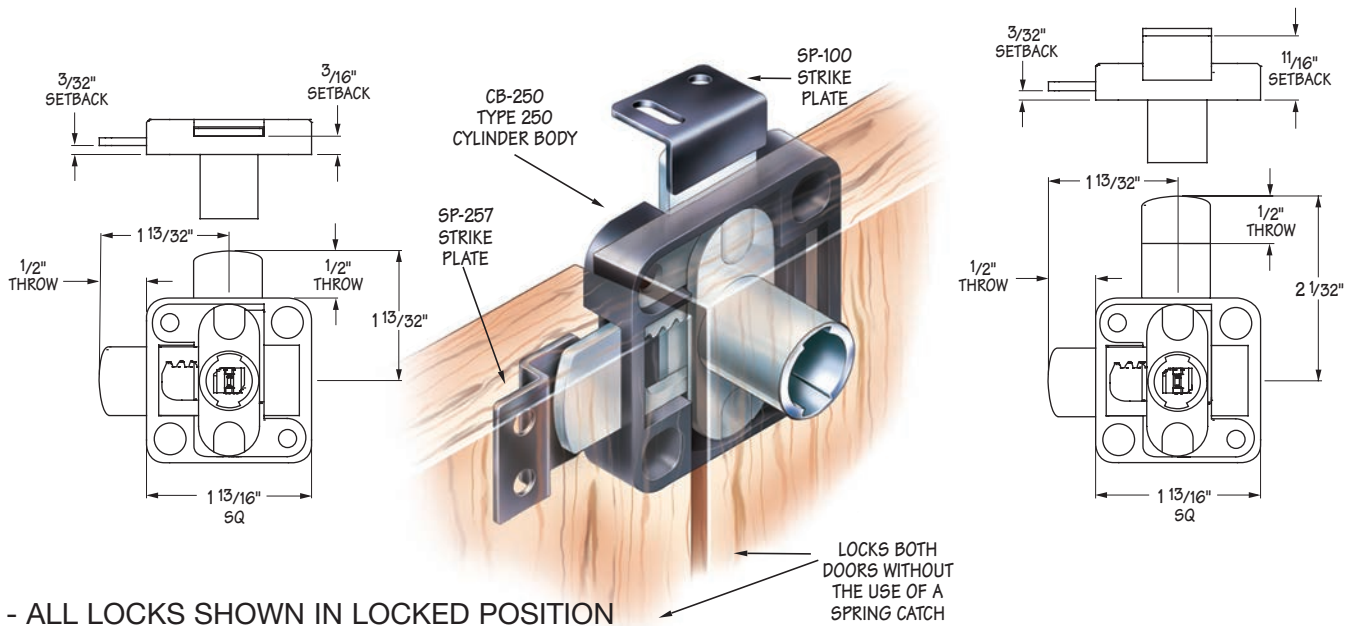


AC-200  
ACTUATOR

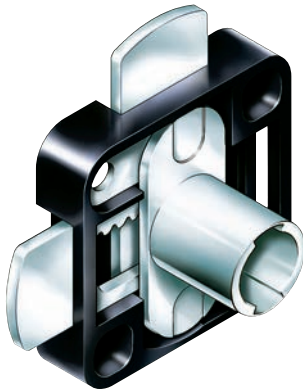


# DOUBLE DOOR LOCK TYPE 250

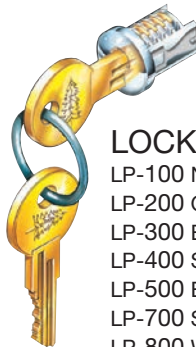
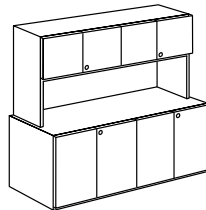
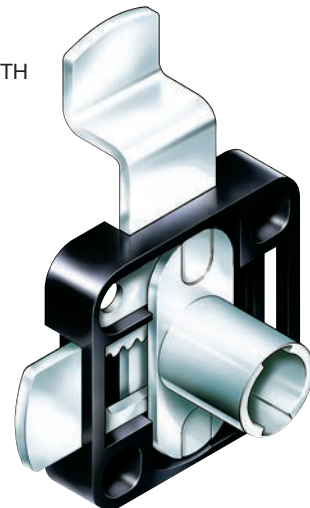
- REQUIRES 16.5 MM DIAMETER HOLE
- MOUNTS IN 3/4" MATERIAL



CB-250  
TYPE 250  
DOUBLE DOOR LOCK



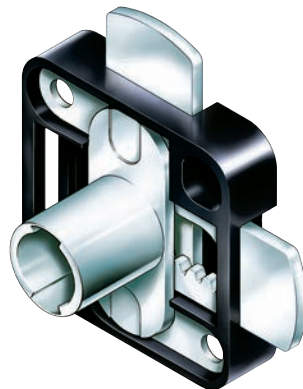
CB-251  
TYPE 251  
DOUBLE DOOR LOCK WITH  
11/16" OFFSET



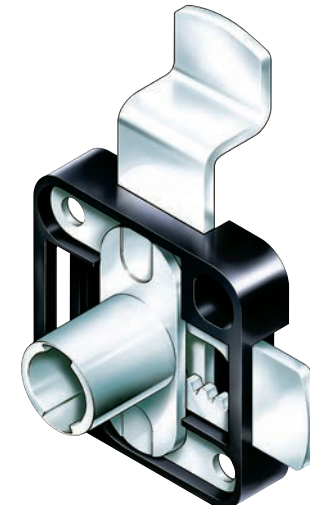
## LOCK PLUGS

- LP-100 Nickel
- LP-200 Old English
- LP-300 Black
- LP-400 Statuary Bronze
- LP-500 Brass
- LP-700 Satin Nickel
- LP-800 White

CB-255  
TYPE 255  
OPPOSITE MOUNT  
DOUBLE DOOR LOCK



CB-256  
TYPE 256  
OPPOSITE MOUNT  
DOUBLE DOOR LOCK  
WITH 11/16" OFFSET



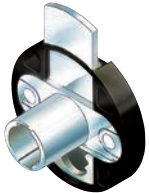
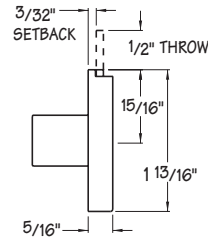


# DEADBOLT LOCKS HORIZONTAL MOUNT

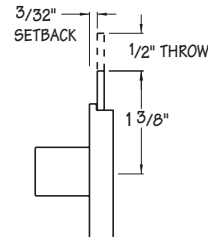
- TWO STYLES AVAILABLE
- REQUIRES 16.5 MM DIAMETER HOLE
- ATTRACTIVE TOUGH NYLON HOUSING
- MOUNTS IN 3/4" OR 1" MATERIAL



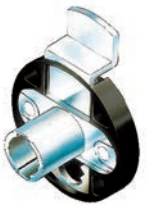
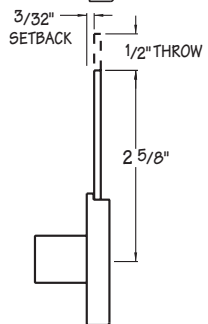
CB-230  
3/4" MATERIAL  
CB-230-1  
1" MATERIAL



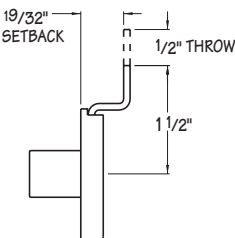
CB-231  
3/4" MATERIAL  
CB-231-1  
1" MATERIAL



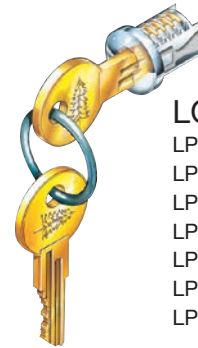
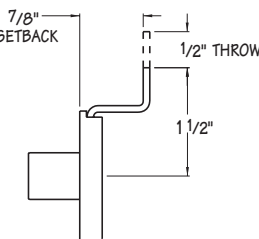
SP-250  
STRIKE  
PLATE  
CB-232  
3/4" MATERIAL  
CB-232-1  
1" MATERIAL



CB-234  
3/4" MATERIAL  
CB-234-1  
1" MATERIAL

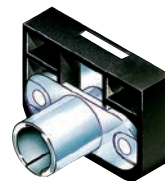


CB-235  
3/4" MATERIAL  
CB-235-1  
1" MATERIAL

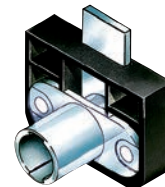
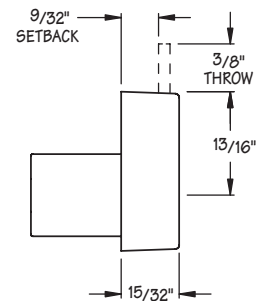


## LOCK PLUGS

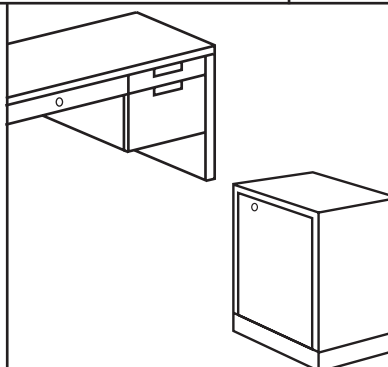
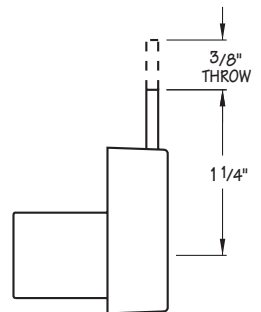
LP-100 Nickel  
LP-200 Old English  
LP-300 Black  
LP-400 Statuary Bronze  
LP-500 Brass  
LP-700 Satin Nickel  
LP-800 White



CB-280  
3/4" MATERIAL  
CB-280-1  
1" MATERIAL



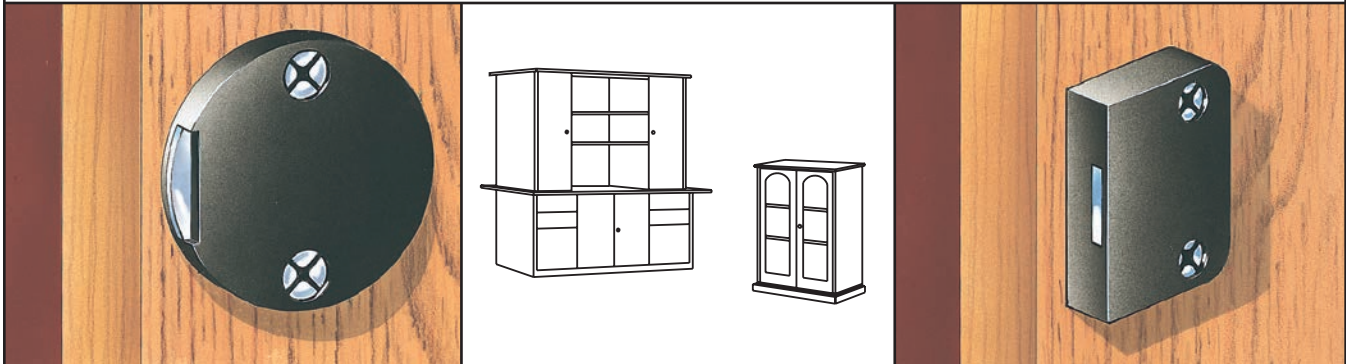
CB-281  
3/4" MATERIAL  
CB-281-1  
1" MATERIAL



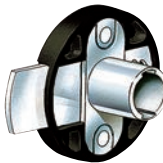
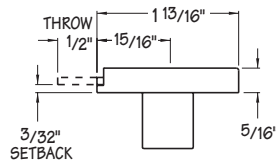


# DEADBOLT LOCKS VERTICAL MOUNT

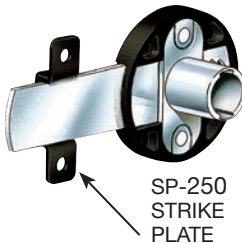
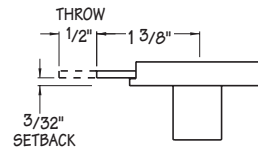
- TWO STYLES AVAILABLE
- REQUIRES 16.5 MM DIAMETER HOLE
- ATTRACTIVE TOUGH NYLON HOUSING
- MOUNTS IN 3/4" OR 1" MATERIAL



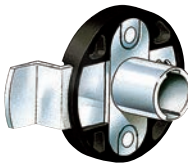
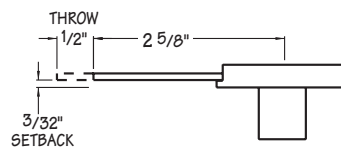
CB-240  
3/4" MATERIAL  
CB-240-1  
1" MATERIAL



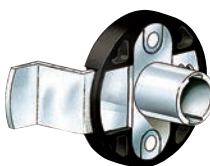
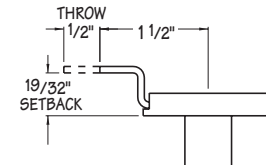
CB-241  
3/4" MATERIAL  
CB-241-1  
1" MATERIAL



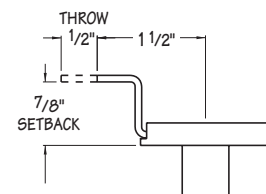
CB-242  
3/4" MATERIAL  
CB-242-1  
1" MATERIAL



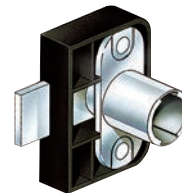
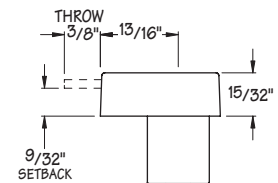
CB-244  
3/4" MATERIAL  
CB-244-1  
1" MATERIAL



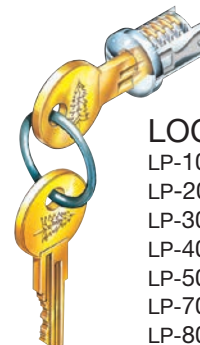
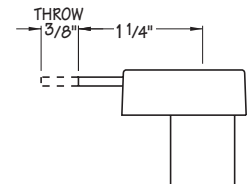
CB-245  
3/4" MATERIAL  
CB-245-1  
1" MATERIAL



CB-290  
3/4" MATERIAL  
CB-290-1  
1" MATERIAL



CB-291  
3/4" MATERIAL  
CB-291-1  
1" MATERIAL

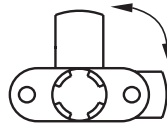


## LOCK PLUGS

- LP-100 Nickel
- LP-200 Old English
- LP-300 Black
- LP-400 Statuary Bronze
- LP-500 Brass
- LP-700 Satin Nickel
- LP-800 White

# CAM LOCK CYLINDER BODY

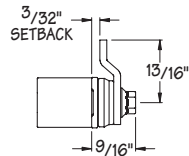
- 90° ROTATION
- REQUIRES 16.5 MM DIAMETER HOLE
- MOUNTS IN 3/4" MATERIAL



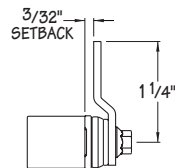
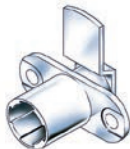
90° ROTATION

## HORIZONTAL MOUNT

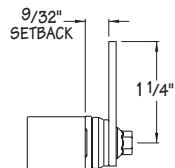
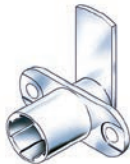
CB-080



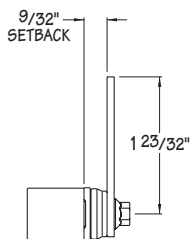
CB-083



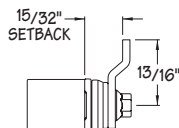
CB-084



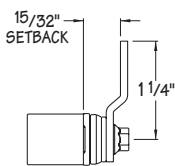
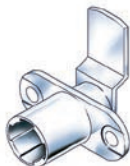
CB-087



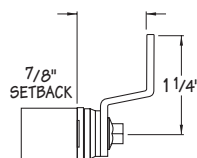
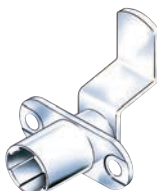
CB-085



CB-088

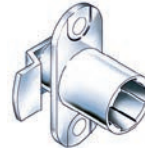


CB-089

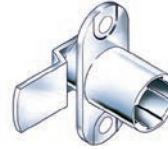


## VERTICAL MOUNT

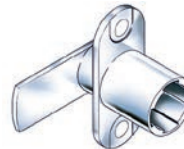
CB-090



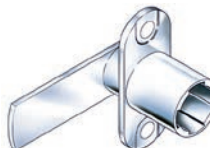
CB-093



CB-094



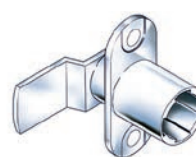
CB-097



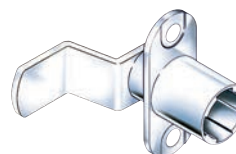
CB-095



CB-098



CB-099

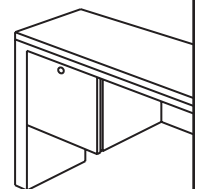
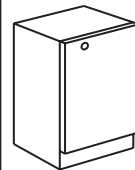
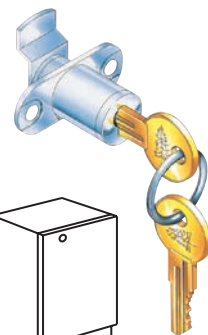


**NOTE:  
CAM LOCKS  
MUST BE  
INSTALLED SO  
THAT THEY  
LOCK IN THE  
COUNTER-  
CLOCKWISE  
POSITION!**



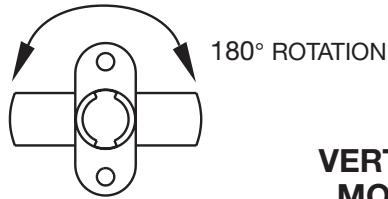
## LOCK PLUGS

- LP-100 Nickel
- LP-200 Old English
- LP-300 Black
- LP-400 Statuary Bronze
- LP-500 Brass
- LP-700 Satin Nickel
- LP-800 White



# CAM LOCK CYLINDER BODY

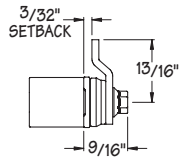
- 180° ROTATION
- REQUIRES 16.5 MM DIAMETER HOLE
- MOUNTS IN 3/4" OR 1" MATERIAL



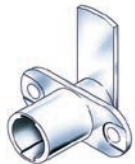
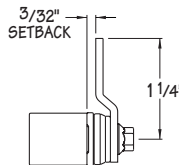
## HORIZONTAL MOUNT



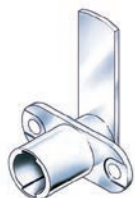
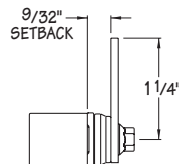
CB-180  
3/4" MATERIAL  
CB-180-1  
1" MATERIAL



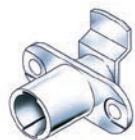
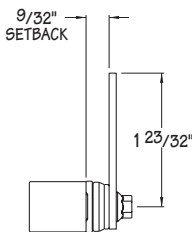
CB-183  
3/4" MATERIAL  
CB-183-1  
1" MATERIAL



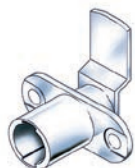
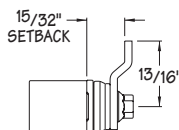
CB-184  
3/4" MATERIAL  
CB-184-1  
1" MATERIAL



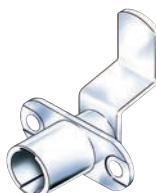
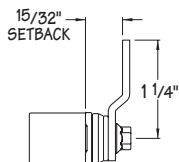
CB-187  
3/4" MATERIAL  
CB-187-1  
1" MATERIAL



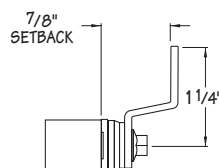
CB-185  
3/4" MATERIAL  
CB-185-1  
1" MATERIAL



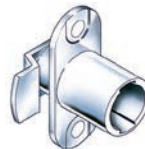
CB-188  
3/4" MATERIAL  
CB-188-1  
1" MATERIAL



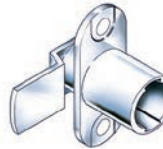
CB-189  
3/4" MATERIAL  
CB-189-1  
1" MATERIAL



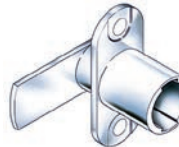
## VERTICAL MOUNT



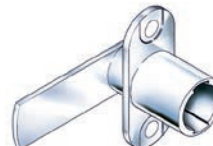
CB-190  
3/4" MATERIAL  
CB-190-1  
1" MATERIAL



CB-193  
3/4" MATERIAL  
CB-193-1  
1" MATERIAL



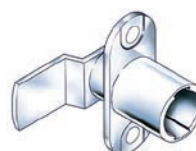
CB-194  
3/4" MATERIAL  
CB-194-1  
1" MATERIAL



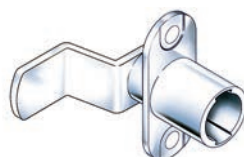
CB-197  
3/4" MATERIAL  
CB-197-1  
1" MATERIAL



CB-195  
3/4" MATERIAL  
CB-195-1  
1" MATERIAL

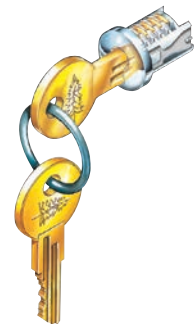


CB-198  
3/4" MATERIAL  
CB-198-1  
1" MATERIAL



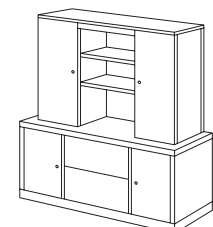
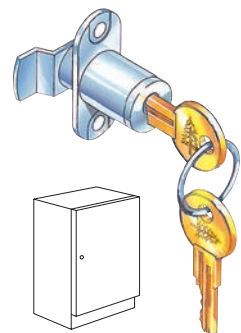
CB-199  
3/4" MATERIAL  
CB-199-1  
1" MATERIAL

**NOTE:  
CAM LOCKS  
MUST BE  
INSTALLED SO  
THAT THEY  
LOCK IN THE  
COUNTER-  
CLOCKWISE  
POSITION!**



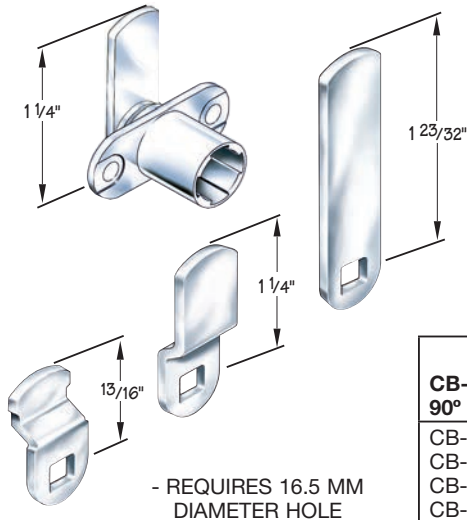
## LOCK PLUGS

LP-100 Nickel  
LP-200 Old English  
LP-300 Black  
LP-400 Statuary Bronze  
LP-500 Brass  
LP-700 Satin Nickel  
LP-800 White





# CAM LOCK KITS CB-165, CB-168, CB-169



- REQUIRES 16.5 MM DIAMETER HOLE

**Application** - Universal lock for either doors or drawers. Each kit contains a variety of easily switched cams to accommodate most locking situations.

**Operation** - 90° or 180° cam rotation. Counter clockwise to lock.

**Keying** - Order lock plug separately.

**Packaging** - Cylinder supplied with two straight and two bent cams. Bent cams have setback of 15/32\".

These Kits will Replace the Following Timberline Cam Locks:

CB-165 90° Rotation			CB-168 180° Rotation (Horizontal)		CB-169 180° Rotation (Vertical)	
CB-080	CB-083	CB-084	CB-180	CB-183	CB-190	CB-193
CB-085	CB-087	CB-088	CB-184	CB-185	CB-194	CB-195
CB-090	CB-093	CB-094	CB-187	CB-188	CB-197	CB-198
CB-095	CB-097	CB-098				

## THREADED BARREL CAM LOCK KIT

CB-141 - Nickel Plated Cylinder  
CB-143 - Black Plated Cylinder (shown)

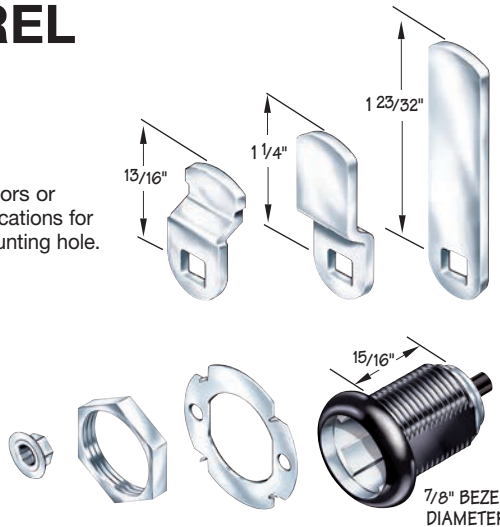
**Application** - Universal type lock for either doors or drawers. Kit will accommodate most locking applications for material thickness 1/16\".

Industry-standard Double D hole can be used in metal applications.

**Operation** - 90 degree cam rotation. Counter clockwise to lock.

**Keying** - Order lock plugs separately.

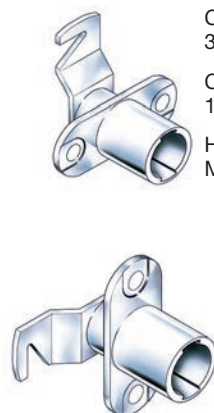
**Packaging Contents** - Cylinder supplied with one straight cam, two bent cams, flange nut, hex nut and spur washer. Cam plates are zinc plated.



### LOCK PLUGS

LP-100 Nickel  
LP-200 Old English  
LP-300 Black  
LP-400 Statuary Bronze  
LP-500 Brass  
LP-700 Satin Nickel  
LP-800 White

## FLIPPER/TAMBOUR DOOR LOCK CB 181 & CB 191



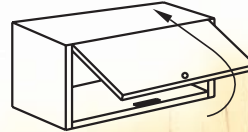
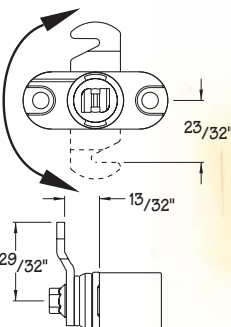
CB-181  
3/4\".

CB-181-1  
1\".

CB-191  
3/4\".

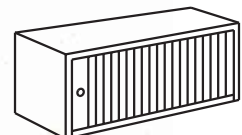
CB-191-1  
1\".

NOTE - COUNTER  
CLOCKWISE

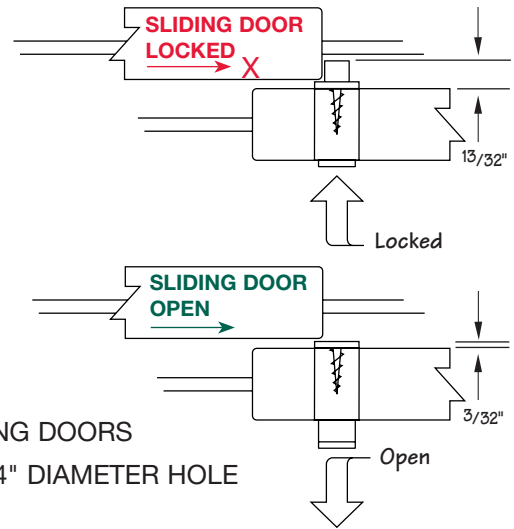
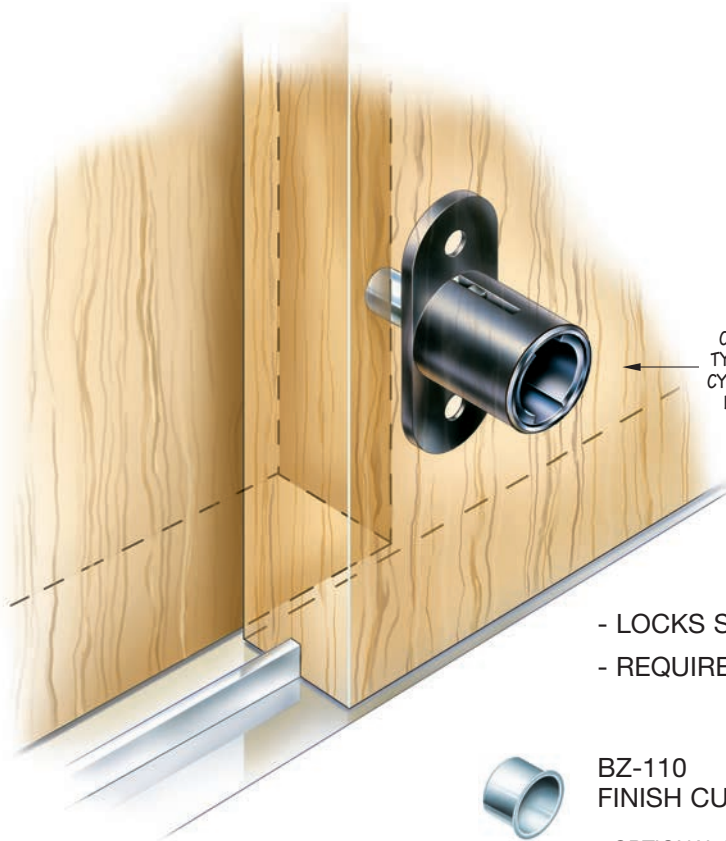


- REQUIRES 16.5 MM DIAMETER HOLE

SP-181 STRIKE PLATE



# PUSH LOCK TYPE 175

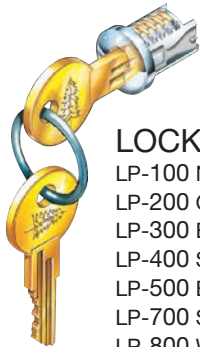
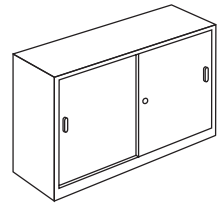


- LOCKS SLIDING DOORS
- REQUIRES 3/4" DIAMETER HOLE



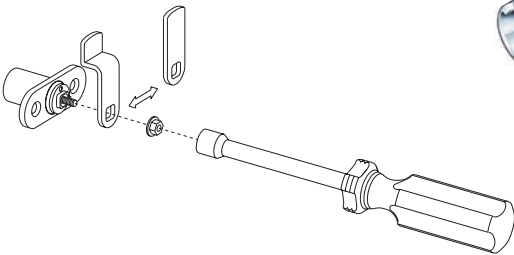
BZ-110  
FINISH CUP

- OPTIONAL FINISH CUP FOR BACK DOOR
- REQUIRES 1/2" HOLE
- NICKEL FINISH

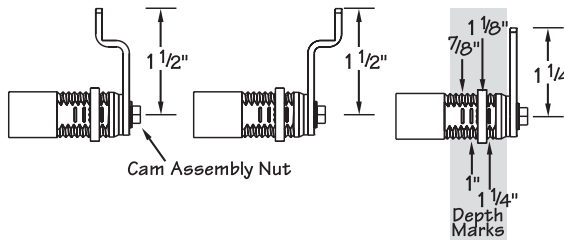


## LOCK PLUGS

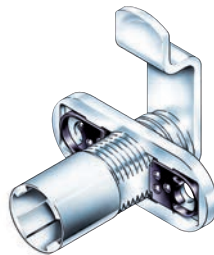
- LP-100 Nickel
- LP-200 Old English
- LP-300 Black
- LP-400 Statuary Bronze
- LP-500 Brass
- LP-700 Satin Nickel
- LP-800 White



THE 'THICK PANEL LOCK' COMES PACKAGED WITH 2 DIFFERENT CAMS WHICH CAN BE ASSEMBLED TO THE LOCK IN ANY OF THE 3 ORIENTATIONS ILLUSTRATED TO THE RIGHT. THIS OFFERS SUFFICIENT FLEXIBILITY TO ADAPT TO MOST LOCKING SITUATIONS.



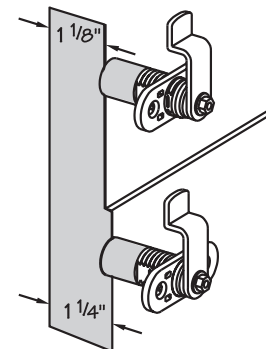
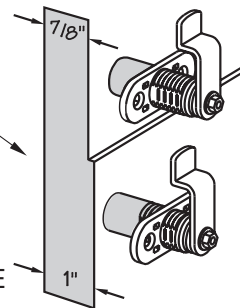
# THICK PANEL LOCK TYPE 170



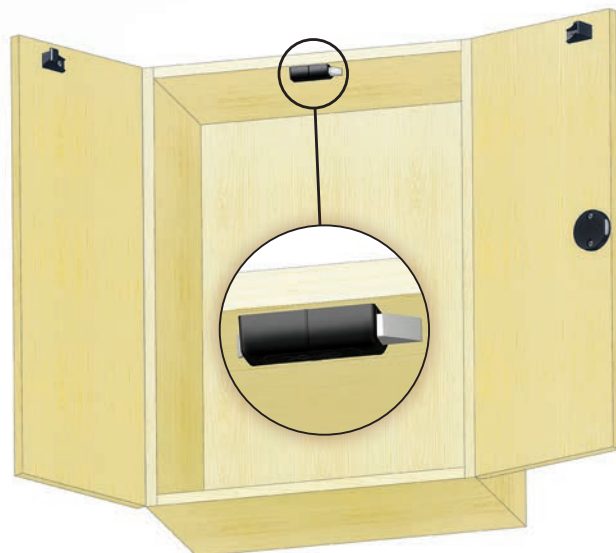
MOUNTING FLANGE ADJUSTS TO ALLOW LOCK TO BE MOUNTED IN PANELS FROM 7/8" THICK UP TO 1 3/8" THICK

CB-170  
TYPE 170  
CYLINDER BODY

- REQUIRES 16.5 MM DIAMETER HOLE
- 90° ROTATION ONLY
- COUNTER CLOCKWISE



# DOUBLE DOOR LATCH



EASY TO INSTALL AND CAN WORK WITH ANY STYLE OF CABINET LOCK

NOTE: DEPENDING ON SIZE OF CABINET, TWO LATCHES (ONE AT TOP AND ONE AT BOTTOM) MIGHT BE REQUIRED

Lock Placement	Top Mount Kit	Bottom Mount Kit
Lock on Right Door	<b>DL-200</b> Black Finish <b>DL-200-W</b> White Finish	<b>DL-300</b> Black Finish <b>DL-300-W</b> White Finish
Lock on Left Door	<b>DL-300</b> Black Finish <b>DL-300-W</b> White Finish	<b>DL-200</b> Black Finish <b>DL-200-W</b> White Finish

Watch the Double Door Latch video at [comp.com/ddl](http://comp.com/ddl)

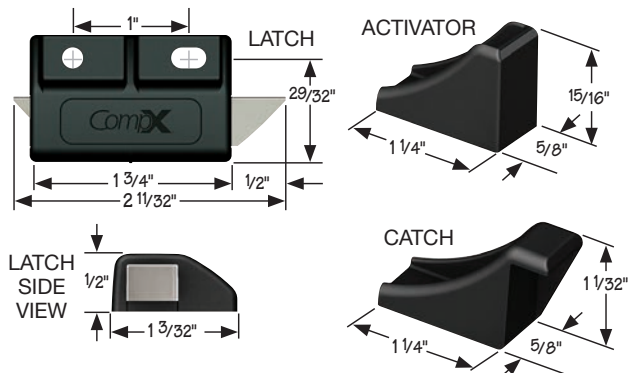
Patented.

**Application** – Allows two or three point locking for standard or wardrobe double door cabinets.

**Operation** – Secures doors with deadbolt or cam locks. Either door can be closed at anytime.

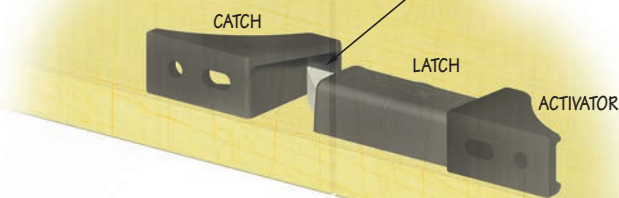
**Finish** – Black (shown) or White.

**Packaging** – Kits include parts below and mounting instructions.



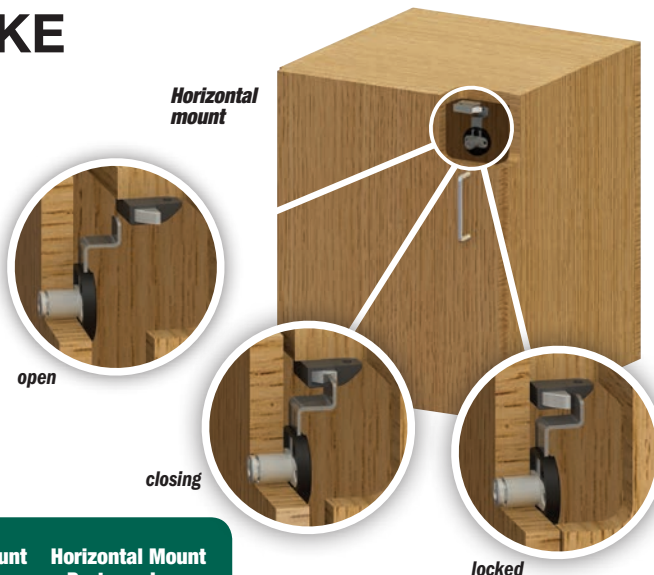
CATCH ON THE SECOND DOOR ACTS AS A SLAM LATCH AND DOES NOT REQUIRE REACHING INTO THE CABINET TO RELEASE

SIGNIFICANT ENGAGEMENT BETWEEN THE CATCH AND LATCH INCREASES SECURITY

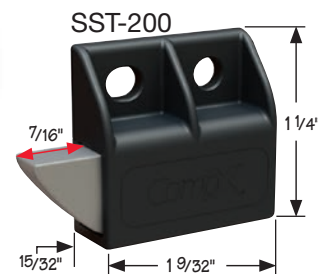
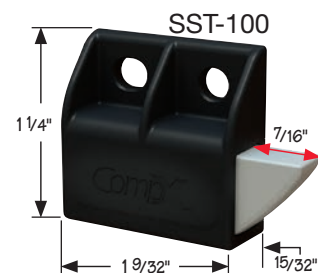


# SLAMSTRIKE

- Helps prevent damage if doors or drawers are closed with the lock in the latched position
- Mount either vertically or horizontally
- For new and retrofit applications (lock sold separately)
- Can be used with multiple drawer locking systems
- Fits within a 1/2" drawer slide clearance



Watch the SlamStrike video: [comp.com/slamstrike](http://comp.com/slamstrike)



SlamStrike Placement	Vertical Mount Part numbers	Horizontal Mount Part numbers
Hinge on Right	<b>SST-100</b>	<b>SST-100</b> or <b>SST-200</b>
Hinge on Left	<b>SST-200</b>	<b>SST-100</b> or <b>SST-200</b>

Note: When installing SlamStrike vertically, make sure bolt is facing down. Also available in white finish.

View online application drawings:

Cabinet  
[http://comp.com/sheets/timberline\\_app/S-100.pdf](http://comp.com/sheets/timberline_app/S-100.pdf)

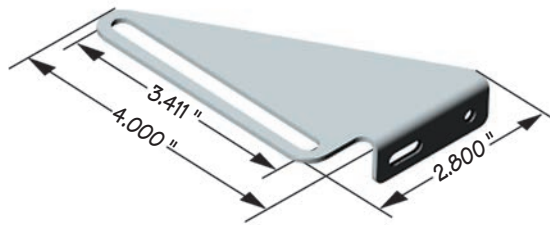
Gang Lock  
[http://comp.com/sheets/timberline\\_app/S-110.pdf](http://comp.com/sheets/timberline_app/S-110.pdf)





# STRIKE PLATES

SP-500



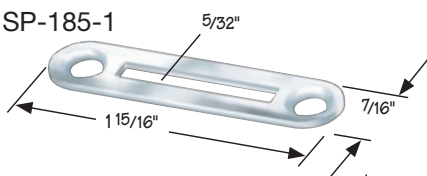
SCREWS TO CASE SIDE.  
USE WHEN NO  
STRINGER AVAILABLE.

**Need a strike plate  
for another lock?**

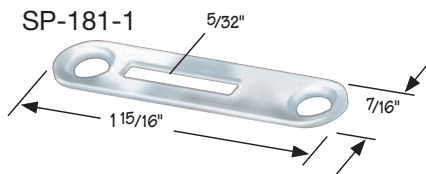
*CompX Timberline strike  
plates can be used for any  
CompX brand!*

## STRIKE PLATES – NICKEL

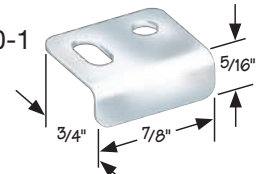
SP-185-1



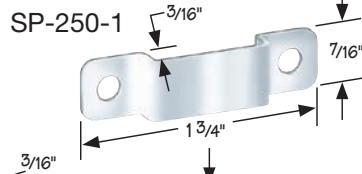
SP-181-1



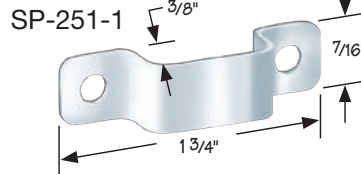
SP-100-1



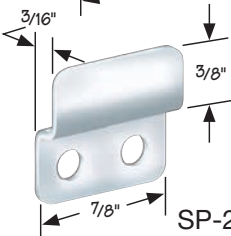
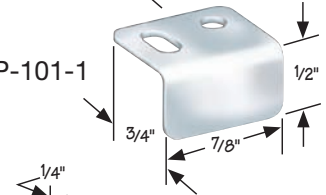
SP-250-1



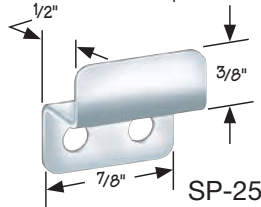
SP-251-1



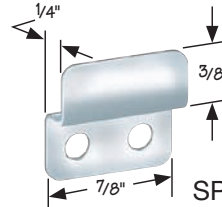
SP-101-1



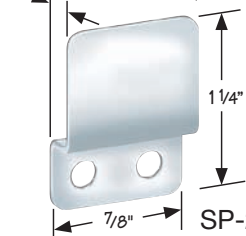
SP-255-1



SP-256-1



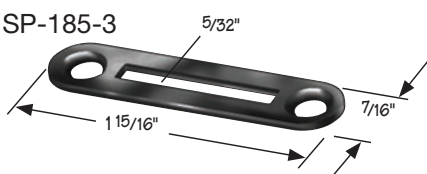
SP-257-1



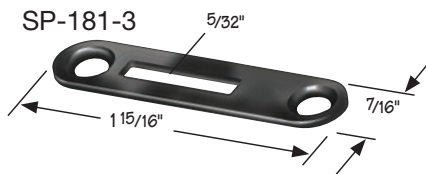
SP-258-1

## STRIKE PLATES – BLACK

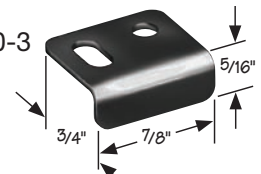
SP-185-3



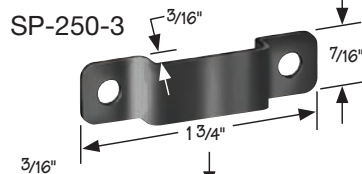
SP-181-3



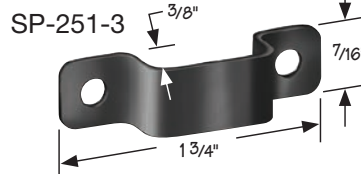
SP-100-3



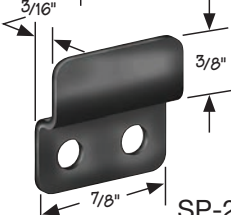
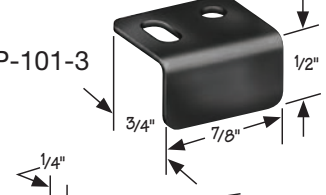
SP-250-3



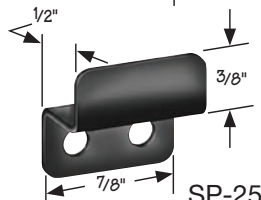
SP-251-3



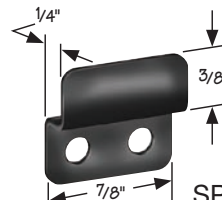
SP-101-3



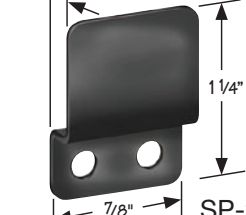
SP-255-3



SP-256-3



SP-257-3



SP-258-3



# GLASS DOOR LOCK BORE THROUGH STYLE

- FOR SWING STYLE DOORS
- MOUNTS IN GLASS DOORS UP TO 3/8" THICK

TYPE 300 SERIES  
HORIZONTAL MOUNT

TYPE 310 SERIES  
VERTICAL MOUNT

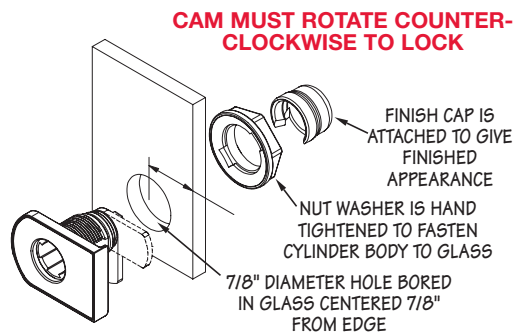


# GLASS DOOR LOCK COMPRESSION MOUNT STYLE

- NON-BORE GLASS DOOR LOCKS
- FULLY CUSHIONED TO AVOID GLASS DAMAGE
- MOUNTS ON GLASS DOORS 1/4" TO 5/16" THICK

TYPE 350 SERIES  
HORIZONTAL MOUNT

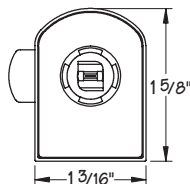
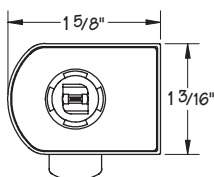
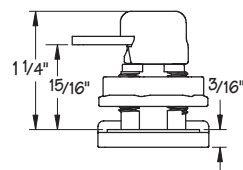
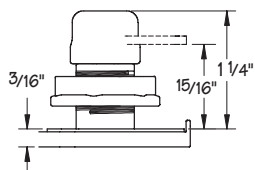
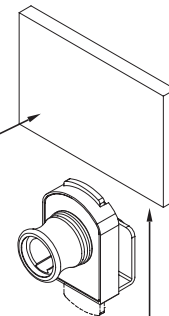
TYPE 360 SERIES  
VERTICAL MOUNT



## LOCK PLUGS

- LP-100 Nickel
- LP-500 Brass
- LP-700 Satin Nickel

LOCK SLIPS ONTO EDGE OF GLASS DOOR AT ANY LOCATION  
NO BORING REQUIRED



## HORIZONTAL MOUNT

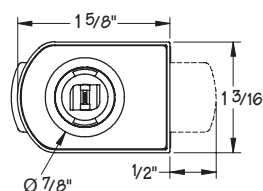
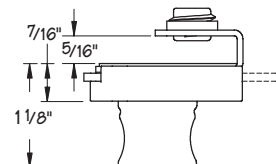
PART NUMBER	FINISH
CB-301	NICKEL
CB-305	BRASS
CB-307	SATIN NICKEL

## VERTICAL MOUNT

PART NUMBER	FINISH
CB-311	NICKEL
CB-315	BRASS
CB-317	SATIN NICKEL

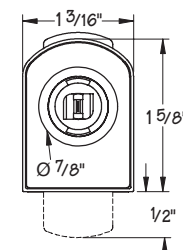
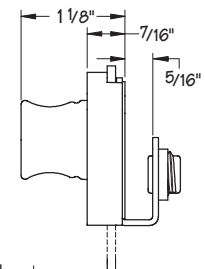
## HORIZONTAL MOUNT

PART NUMBER	FINISH
CB-351	NICKEL
CB-355	BRASS
CB-357	SATIN NICKEL

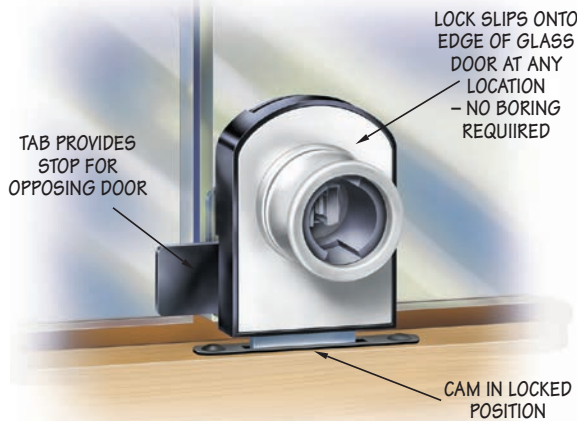


## VERTICAL MOUNT

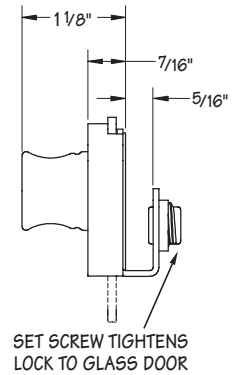
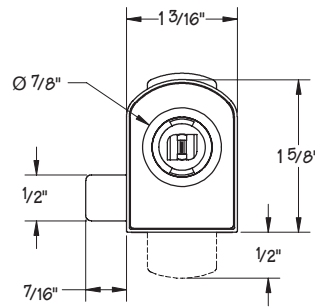
PART NUMBER	FINISH
CB-361	NICKEL
CB-365	BRASS
CB-367	SATIN NICKEL



# GLASS DOOR LOCK DOUBLE DOOR STYLE



## TYPE 370 SERIES VERTICAL COMPRESSION MOUNT



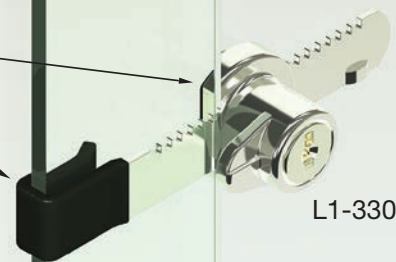
PART NUMBER	FINISH
CB-371	NICKEL
CB-375	BRASS
CB-377	SATIN NICKEL

# SLIDING GLASS DOOR LOCK

- For glass 1/4" and thinner
- TA series master keyed
- Key codes 100TA - 129TA, others available upon request
- Finish bright nickel

Plastisol coating and felt pad eliminate rattling on glass doors

**NEW!**



LOCK PLUG NOT REMOVABLE

# ACCESSORIES

ALLOWS CYLINDER BODIES TO BE USED WITH 3/4" THROUGH 7/8" DIAMETER HOLES AND PERMITS USE OF LOCKS IN 7/8" THICK PANELS



- BZ-100 - Bezel Nickel
- BZ-200 - Bezel Old English
- BZ-300 - Bezel Black
- BZ-400 - Bezel Statuary Bronze
- BZ-500 - Bezel Brass
- BZ-700 - Bezel Satin Nickel
- BZ-800 - Bezel White



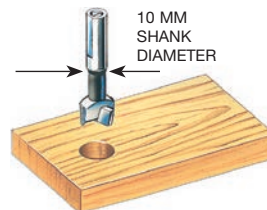
## **NEW!** LP-TK-03 THUMB KNOB

- FOR USE WITH ALL COMPTIMBERLINE CYLINDER BODIES
- WORKS AS A GENERAL THUMB LATCH WHEN KEYED LOCK PLUGS ARE NOT REQUIRED, AS A SHIPPING PLUG OR AS AN INSERT FOR TESTING LOCKS DURING MANUFACTURING



KY-500 CHANGE TOOL

REQUIRED TO REMOVE LOCK PLUGS IN CYLINDER BODIES



## DB-165 16.5MM DRILL BIT

DRILLS THE PROPER DIAMETER HOLE FOR MOST CYLINDER BODIES



## CC-100 CYLINDER FINISH CAP

COVERS CYLINDER BODY DURING FINISHING BEFORE LOCK PLUGS ARE INSTALLED



## SP-300 SPACER FOR 5/8" PANEL

ALLOWS CAM LOCK CYLINDER BODIES FOR 3/4" MATERIAL TO BE USED IN 5/8" THICK PANELS





# COMPX REGULATOR - Keyless locking made easy!

Electronic push button cabinet locks can be installed easily on new or retrofit applications.

For more information about RegulatorR, visit **compxregulator.com**



**Self-locking version** features SlamCAM (patented), a spring-loaded latching mechanism, which allows the user to push to close – no need to return the knob to the locked position.

**Manual locking version** requires users to rotate the knob into the unlocked and locked position. Manual locking version can be programmed into daily/shared use mode – allows for revolving user selected codes.

## RegulatorR is easy to use

- 19 user codes and one supervisor code; code length is 4-8 digits

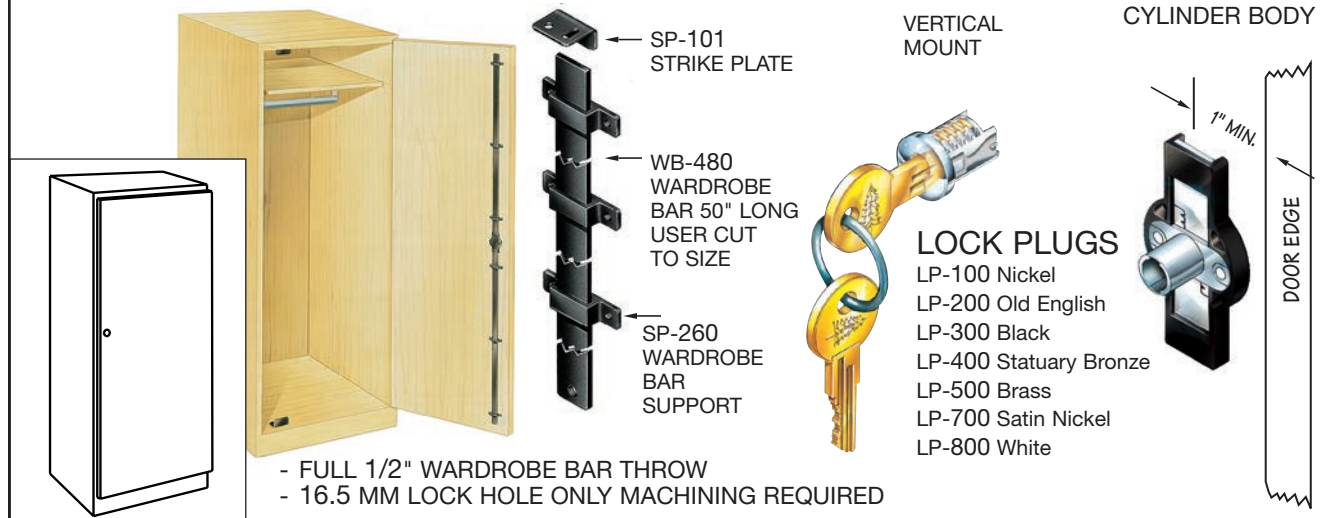
## RegulatorR is easy to maintain

- 75,000 cycles; extended battery life reduces replacement costs
- Battery compartment is easily accessible from the outside of the cabinet
- Low battery indicator

## RegulatorR is easy to install

- Four different keypad configurations: left and right hand, vertical and top vertical
- Install on new or retrofit applications
- Uses 3/4" diameter mounting hole

# SYSTEM 260 WARDROBE LOCK



# StealthLock))) - Keyless, Invisible Electronic Cabinet Lock

stealthlock.com

StealthLock works via radio frequency which allows wireless locking of multiple cabinet openings.

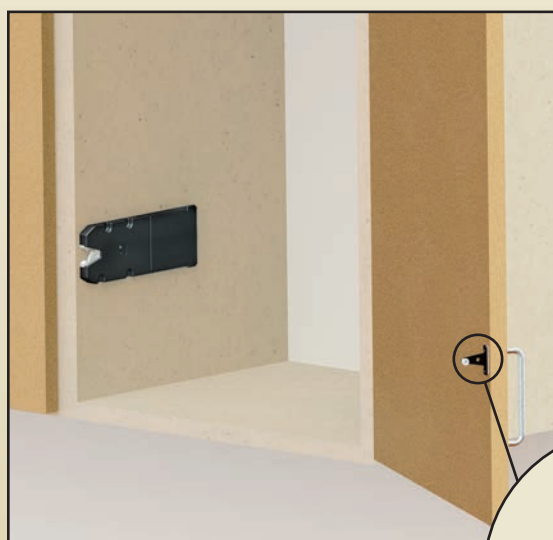
The **Transmitter Pad** broadcasts the code entered to lock or unlock the cabinet door or drawer.



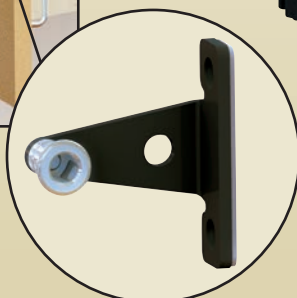
The Transmitter Pad can mount anywhere within 15 feet of the Receiver Latch without wires.

StealthLock is recommended for use on cabinets made from:

- Wood and wood products
- Phenolic Resin
- Glass



The **Strike Plate** is mounted on the door or drawer to be locked and interfaces with the Receiver Latch.



The **Receiver Latch** mounts inside the cabinet, hidden from view and receives lock or unlock instruction from the Transmitter Pad.

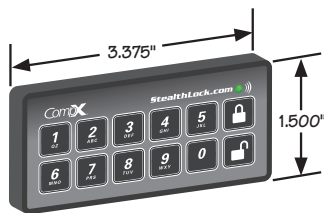
## COMPONENTS

### TP-100 – Transmitter Pad

- Operates with CR2032 coin battery, included
- Low battery indicator

Available in two versions:

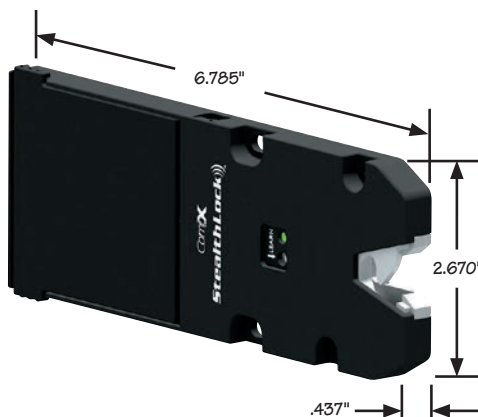
**Standard** – Use for most residential and general commercial applications



**Dedicated** – Use part number TP-150, special factory order, unique Transmitter Pad ID mates a Transmitter Pad to specific Receiver Latches. Ideal for lockers or users within close proximity of each other.

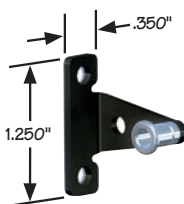
### RL-100 – Receiver Latch

- Programmable using Transmitter Pad
- One required per door or drawer
- Mounts within 1/2" drawer suspension
- Operates with 4 AAA batteries



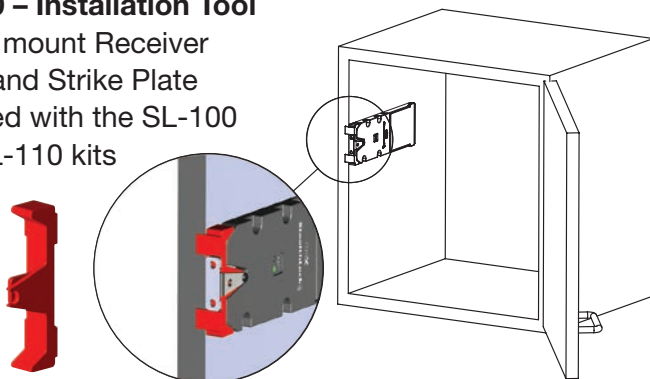
### SP-600 – Strike Plate

- For door and drawer use
- Fits within 1/2" drawer suspension



### TL-600 – Installation Tool

- Use to mount Receiver Latch and Strike Plate
- Included with the SL-100 and RL-110 kits



## KITS

### Standard version

#### SL-100 – StealthLock Kit

- Contains all parts necessary to lock one door or drawer
- Kit includes:
  - ♦ RL-100 – Receiver Latch
  - ♦ TP-100 – Transmitter Pad
  - ♦ SP-600 – Strike Plate
  - ♦ TL-600 – Installation Tool
  - ♦ required mounting screws

#### RL-110 – Receiver Latch Kit

- Contains all parts necessary to lock additional doors or drawers operated by existing Transmitter Pad
- Kit includes:
  - ♦ RL-100 – Receiver Latch
  - ♦ SP-600 – Strike Plate
  - ♦ TL-600 – Installation Tool
  - ♦ required mounting screws

### Dedicated version

#### SL-150 Dedicated Preprogrammed Kits

For medium to large projects

Transmitter pads and receiver latches can be programmed at the factory to a customer-provided schedule. They are then ready for installation. If needed, StealthLock's modes (passage, self-locking and single use) can be reprogrammed after installation.

To download the *SL-150 Preprogrammed Kit: How to Order* sheet, go to **stealthlock.com** or contact us for more information.





# StealthLock))) - Keyless, Invisible Electronic Cabinet Lock

## ACCESSORIES

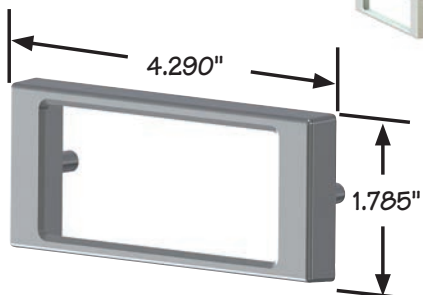
stealthlock.com

**MP-700 Satin Nickel (shown)**

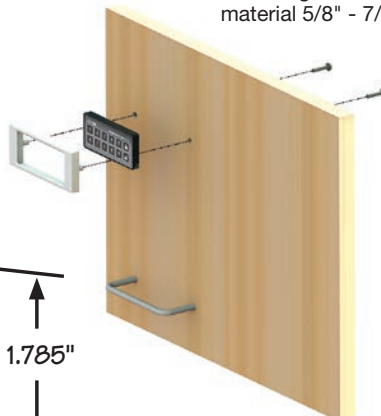
**MP-300 Black**

**Mounting Plates**

- Mounting screws and template included



Mounting screws fit material 5/8" - 7/8" thick



**MP-700-WM Satin Nickel (shown)**

**MP-300-WM Black**

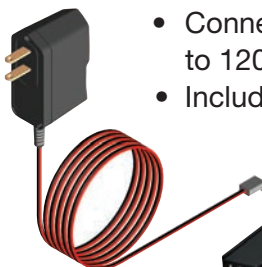
**Wall-Mounting Plates**

Allows mounting plate to be affixed to wall or other surfaces where rear access is unavailable.

## AUXILIARY POWER SYSTEM

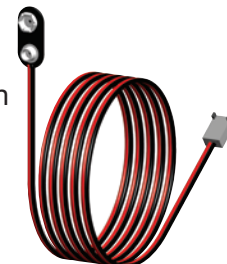
**RL-AP1 - Power Supply**

- Connects Receiver Latch to 120 VAC power
- Includes 5-1/2 foot cord



**RL-APC-9VJ-10 - Power Cord - 9V Jump**

- Provides emergency power to Receiver Latch using a 9 volt battery
- 10 foot cord length

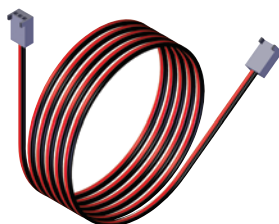


**RL-APC - Power Cord**

- Use to daisy chain Receiver Latches

Available lengths

- RL-APC-3 Power Cord - 3 ft.
- RL-APC-5 Power Cord - 5 ft.
- RL-APC-10 Power Cord - 10 ft.



**RL-AP1 and RL-APC-9VJ-10 can power up to 10 Receiver Latches using the RL-APC Power Cords.**

Visit [stealthlock.com](http://stealthlock.com) for programming and installation videos, frequently asked questions and more.



# FILE FRAME CUT TO SIZE KITS

Available in black or white finish!

**Step 1: Determine kit needed**

INSIDE WIDTH BETWEEN 12" AND 15"

**letter kit**

Front and back rail; FF-1FL-13.153; 2 per kit

Cut to size bracket; FF-R25; 2 per kit

Cut to size cross rail; FF-SKA-25.000; 2 per kit

Side-to-side rail; FF-LET; 1 per kit

INSIDE WIDTH GREATER THAN 15"

**legal kit**

Front and back rail; FF-1FL-16.153; 2 per kit

Cut to size bracket; FF-R25; 2 per kit

Cut to size cross rail; FF-SKA-25.000; 2 per kit

Side-to-side rail; FF-LEG; 1 per kit

**Step 2: Attach fixed rail**

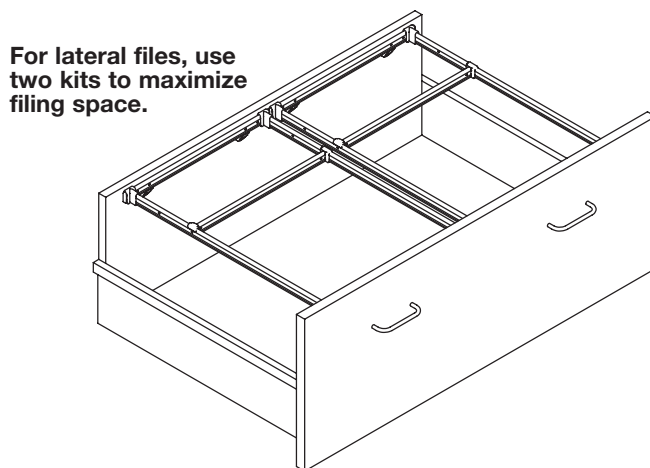
TOP OF RAIL SHOULD BE 9.5" MINIMUM ABOVE BOTTOM OF DRAWER

**Step 3: Size, cut & install rails**

CUT TO SIZE BRACKET AT REAR

**Step 4: Install side-to-side rail**

PRE-POSITIONED HOLES IN FRONT-TO-BACK RAILS ALLOW FOR LETTER OR LEGAL SIDE-TO-SIDE FILING



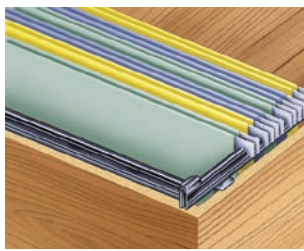
## File Frame part numbers

Finish color	Drawer width: Letter	Drawer width: Legal
Black	FF-SK2	FF-SK3
White	FF-SK2-W	FF-SK3-W

KITS CONTAIN ALL COMPONENTS NEEDED TO FILE FRONT-TO-BACK OR SIDE-TO-SIDE IN PROPERLY SIZED DRAWERS. FILE FRAME KITS CAN BE USED IN EITHER FULL WOOD DRAWERS OR METAL DRAWER BOX SYSTEMS.



# FILE FRAME SYSTEM ADVANTAGES



Typical file frame corner

## Great Appearance... Functional Design

- Attractive, black or white material
- Files slide smoothly
  - Will not slide out of position when using files
  - Will not pull out when removing files
- Easy to adjust between filing configurations
  - Rails snap in and out of position without tools



Fits easily into place and slides smoothly to desired lock-in filing configuration

## Cost Effective, Easy to Install, and Reliability of Supply

- Easy to install using only screws
- No machining required
- No need to tape frame system in place during shipping
- Easy to purchase directly from manufacturer
- One week typical lead time



File frame generally ships within one week

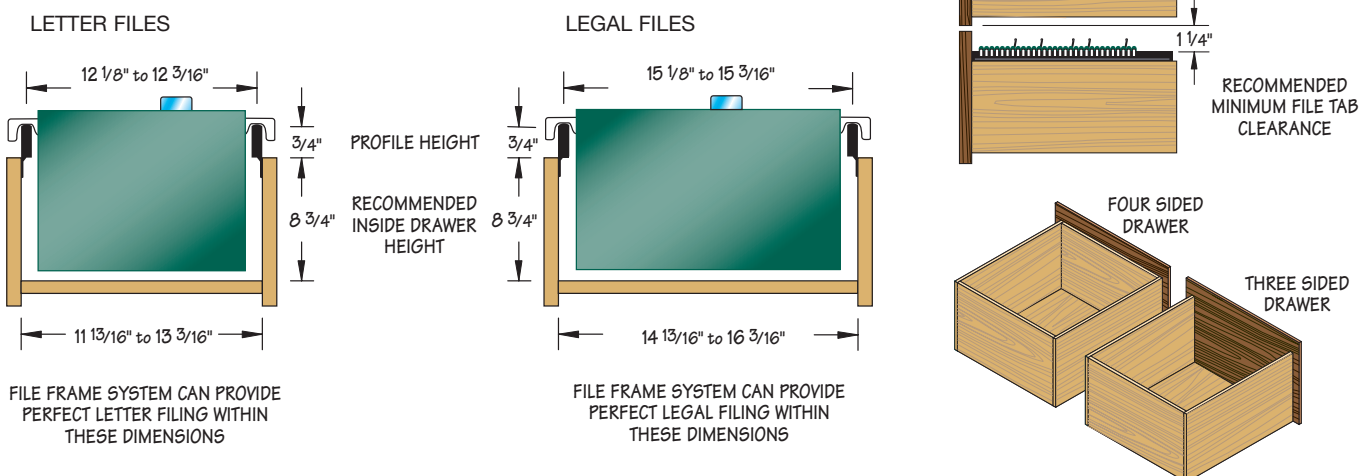
# FITTED FILE FRAME SYSTEM

These File Frame Systems are designed specifically to your individual drawer box sizes. Fitted File Frame systems reduce labor, optimize filing capability,

reduce scrap, and enhance the look and function of your file drawers. File Frame Systems can be produced to fit any size or shape file drawer.



# FILE FRAME FACTS







715 Center Street  
Grayslake, IL 60030  
1-800-LOCKBAR  
PH: 1-847-752-2600 FAX: 1-847-752-2420  
email: [timberlineorders@compX.com](mailto:timberlineorders@compX.com)  
[compX.com](http://compX.com)



The products contained in this catalog are protected by the following patents:  
1,331,036; 6,109,708; 6,550,874; 7,665,812; 8,516,864; 9,388,613.

© 2019 CompX Timberline

Catalog #0819