

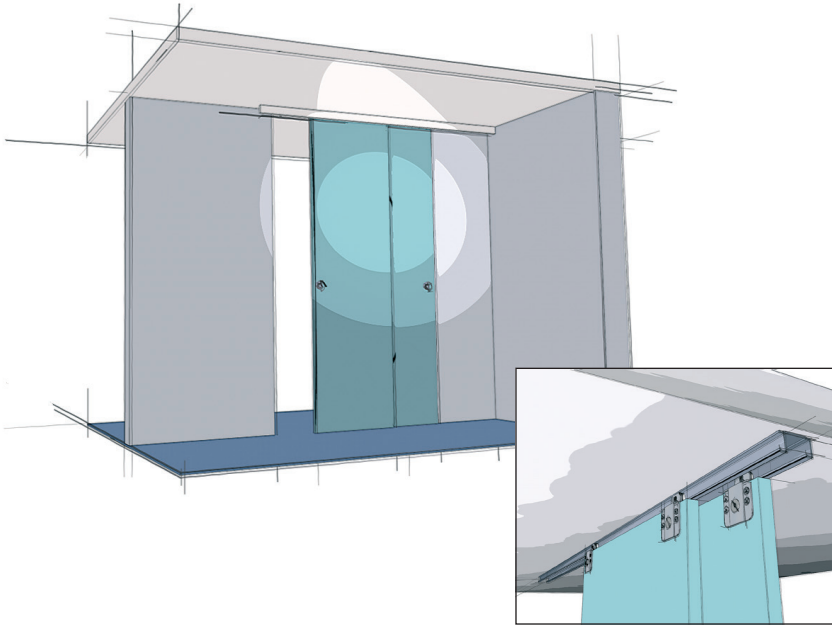
Grant® By-Pass Door Sets
for Sliding Doors

By-passing Door Sets

Top Line Grant 6034

up to 50 lbs/door (23 kg/door), for door thickness

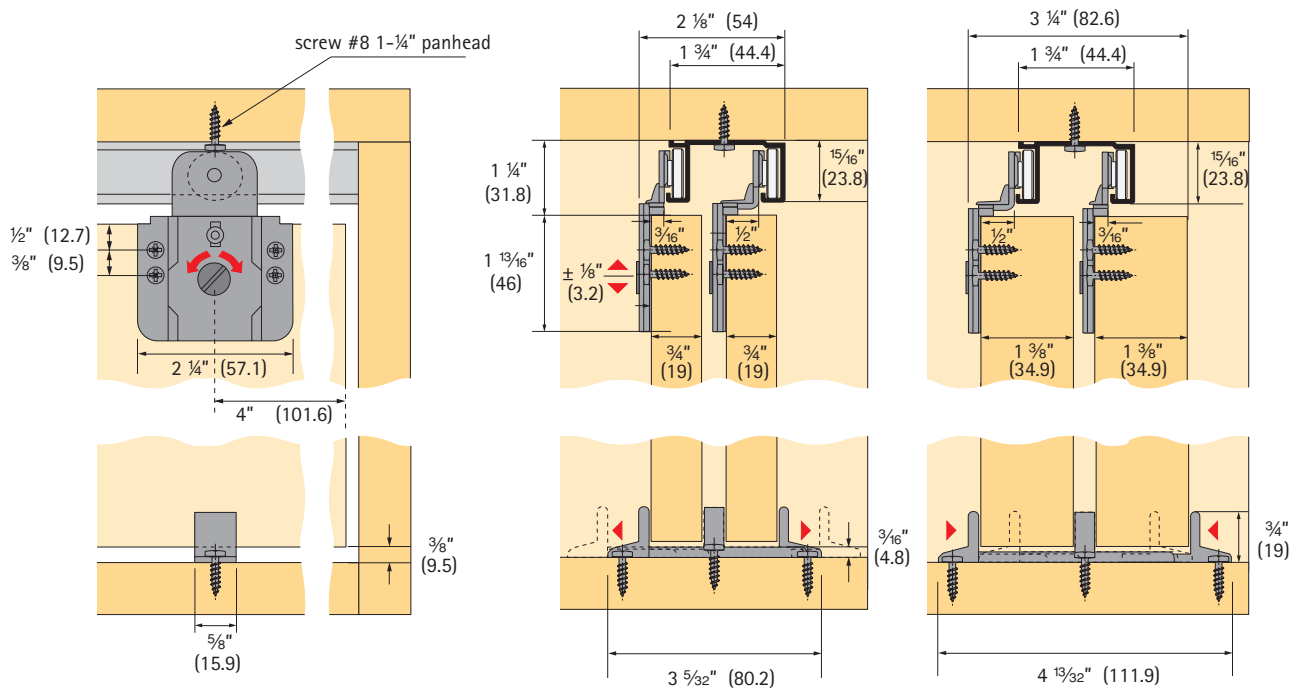
$\frac{3}{4}$ " (19 mm) and $1\frac{3}{8}$ " (34.9 mm), side mount, adjustable



Top Line Grant 6034

A medium duty sliding door hardware series for by-passing installations. Applications include doors between rooms, closet doors, cabinets, storage walls, and partitions.

- For $\frac{3}{4}$ " and $1\frac{3}{8}$ " doors weighing up to 50 lbs/door (23 kg/door)
- Ball-bearing wheels ensure a smooth, quiet and long lasting performance.
- Dual set of mounting holes; ideal for hollow core doors
- Easy-turn cam vertical adjustment
- Dust free track design
- Quick door hanging by tilting pre-mounted hardware onto track profile
- Floor guide required
- Made in USA



Specifications:

Mounting:	Side
Adjustment:	¼" (6.4 mm) vertical
Door thickness:	¾" (19 mm) or 1 ⅝" (34.9 mm)
Headroom:	1 ⅝" (28.6 mm) min., 1 ¾" (34.9 mm) max.
Application:	By-passing

Top Line Grant 6034 door hardware is available in four purchasing options**Option I**

Complete package: includes track, hardware set, and all screws

Hardware and track

Length	Order no.	PU
4' (1200 mm)	113 331 8	10 sets
5' (1500 mm)	113 331 9	10 sets
6' (1800 mm)	113 332 0	10 sets
8' (2400 mm)	113 332 1	10 sets

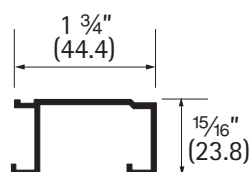
For longer track application order hardware set and track separately

Option II

Track only

Double track 6004

Aluminum extruded, pre-drilled holes



Length	Order no.	PU
4' (1200 mm)	050 466	5
5' (1500 mm)	050 467	5
6' (1800 mm)	050 468	5
8' (2400 mm)	050 469	5
10' (3000 mm)	050 470	5
12' (3600 mm)	050 471	5
16' (4800 mm)	050 472	5

Screws not included - recommend #8 Pan Head

Option III

Hardware set only

Top Line Grant 6034 hardware set
(without track)

The hardware set includes:

- 2 carriers 6320 ball bearing wheel
- 2 carriers 6330 ball bearing wheel
- 1 floor guide 114
- necessary screws and installation instructions

Article	Order no.	PU
Hardware set	113 331 7	10 sets

Option IV

Separate components

Top Line Grant 6034 components**Carrier 6320**

Steel, single wheel, ⅜" offset, side mounting, adjustable, ball bearing wheel, dual mounting holes

Screws included



Finish	Order no.	PU
zinc-plated	113 333 3	50

Carrier 6330

Steel, single wheel, ½" offset, side mounting, adjustable, ball bearing wheel, dual mounting holes

Screws included



Finish	Order no.	PU
zinc-plated	113 333 4	50

Floor guide 114

Nylon, adjustable for ¾" to 1 ⅝" doors

Screws included



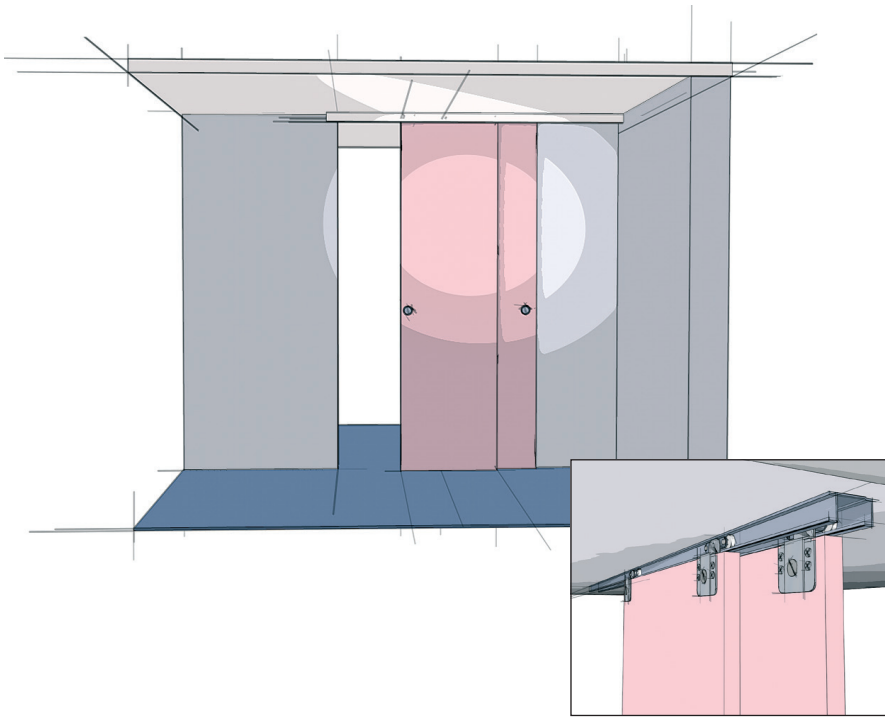
Finish	Order no.	PU
N/A	050 102	50

By-passing Door Sets

Top Line Grant 6064

up to 75 lbs/door (34 kg/door), for door thickness

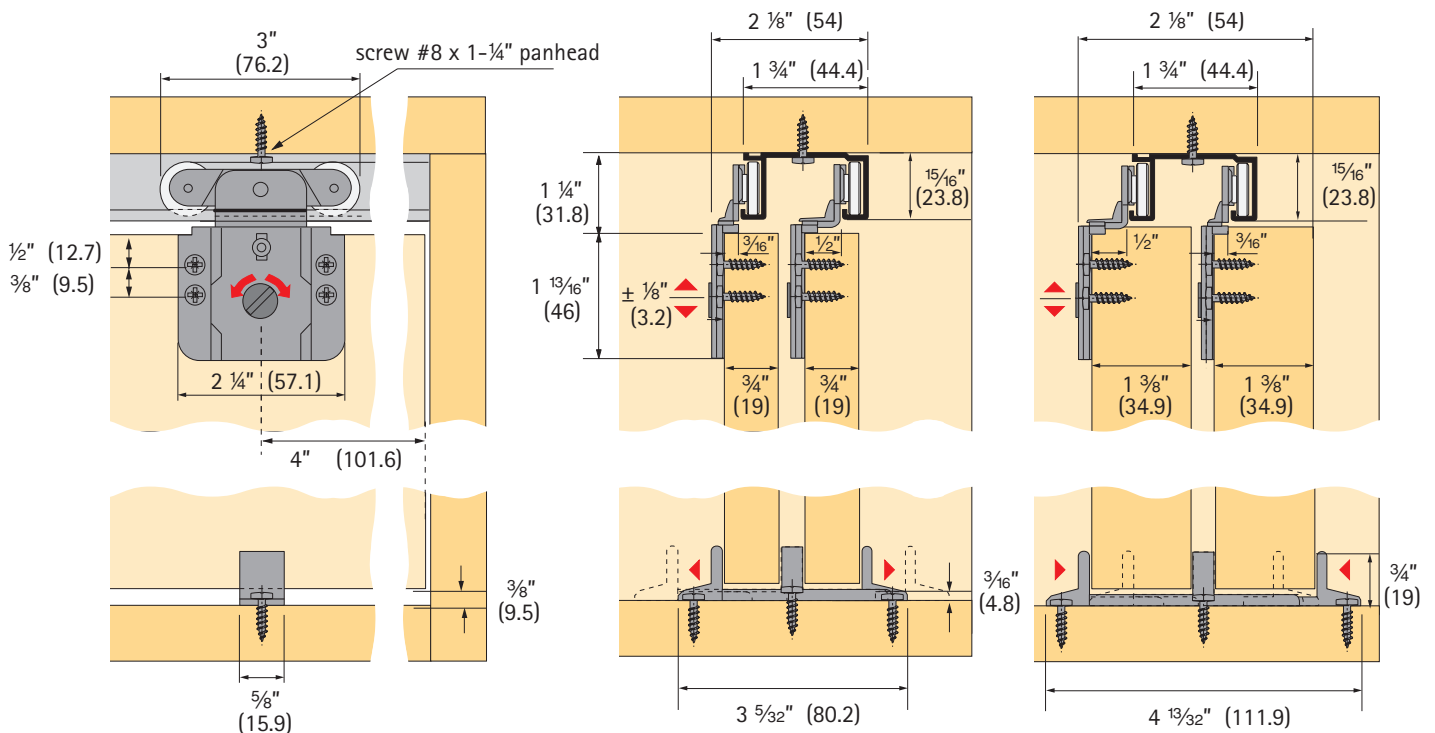
$\frac{3}{4}$ " (19 mm) and $1\frac{3}{8}$ " (34.9 mm), side mount, adjustable



Top Line Grant 6064

A medium duty sliding door hardware series for by-passing installations. Applications include doors between rooms, closet doors, cabinets, storage walls and partitions.

- For $\frac{3}{4}$ " and $1\frac{3}{8}$ " doors weighing up to 75 lbs/door (34 kg/door)
- Ball-bearing wheels ensure a smooth, quiet and long lasting performance.
- Dual set of mounting holes; ideal for hollow core doors
- Easy-turn cam vertical adjustment
- Pivoting rocker arms ensure track-carrier contact.
- Dust free track design
- Quick door hanging by tilting pre-mounted hardware onto track profile
- Floor guide required
- Made in USA



Technical specifications are subject to change without notice

Specifications:

Mounting:	Side
Adjustment:	¼" (6.4 mm) vertical
Door thickness:	¾" (19 mm) or 1 ⅝" (34.9 mm)
Headroom:	1 ⅝" (28.6 mm) min., 1 ¾" (34.9 mm) max.
Application:	By-passing

Top Line Grant 6064 door hardware is available in four purchasing options

Option I

Complete package: includes track, hardware set, and all screws

Hardware and track

Length	Order no.	PU
4' (1200 mm)	113 332 6	10 sets
5' (1500 mm)	113 332 7	10 sets
6' (1800 mm)	113 332 8	10 sets
8' (2400 mm)	113 332 9	10 sets

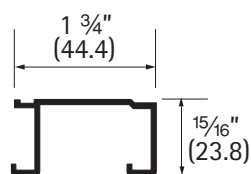
For longer track application order hardware set and track separately

Option II

Track only

Double track 6004

Aluminum extruded, pre-drilled holes



Length	Order no.	PU
4' (1200 mm)	050 466	5
5' (1500 mm)	050 467	5
6' (1800 mm)	050 468	5
8' (2400 mm)	050 469	5
10' (3000 mm)	050 470	5
12' (3600 mm)	050 471	5
16' (4800 mm)	050 472	5

Screws not included - recommend #8 Pan Head

Option III

Hardware set only

Top Line Grant 6064 hardware set
(without track)

The hardware set includes:

- 2 carriers 6350 ball-bearing wheels
- 2 carriers 6360 ball-bearing wheels
- 1 floor guide 114
- necessary screws and installation instructions

Article	Order no.	PU
Hardware set	113 332 5	10 sets

Option IV

Separate components

Top Line Grant 6064 components**Carrier 6350**

Steel, double wheel, ⅜" offset, side mounting, adjustable, ball bearing wheels, dual mounting holes

Screws included



Finish	Order no.	PU
zinc-plated	113 333 6	50

Carrier 6360

Steel, double wheel, ½" offset, side mounting, adjustable, ball bearing wheels, dual mounting holes

Screws included

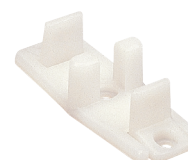


Finish	Order no.	PU
zinc-plated	113 333 7	50

Floor guide 114

Nylon, adjustable for ¾" to 1 ⅝" doors

Screws included



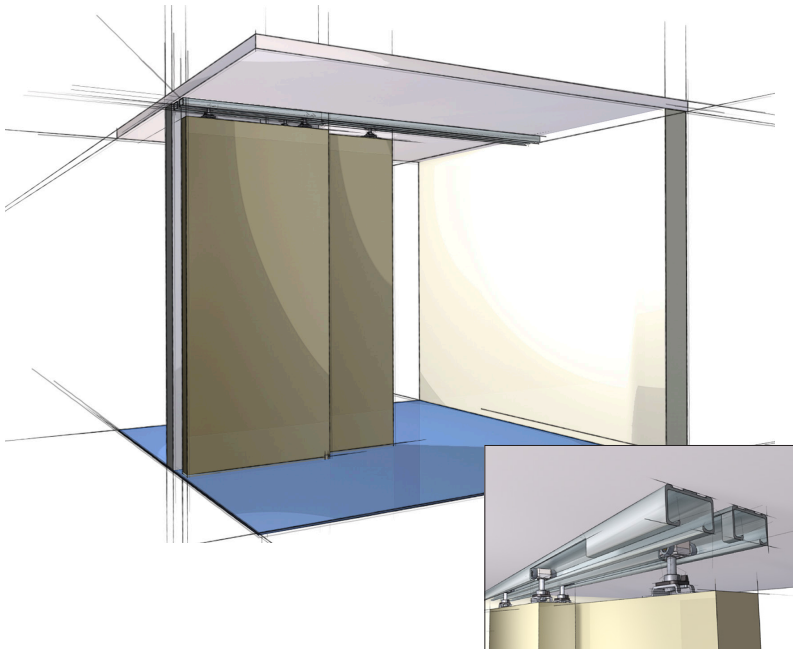
Finish	Order no.	PU
N/A	050 102	50

By-passing Door Set

Grant 75E By-pass

up to 75 lbs/door (34 kg/door)

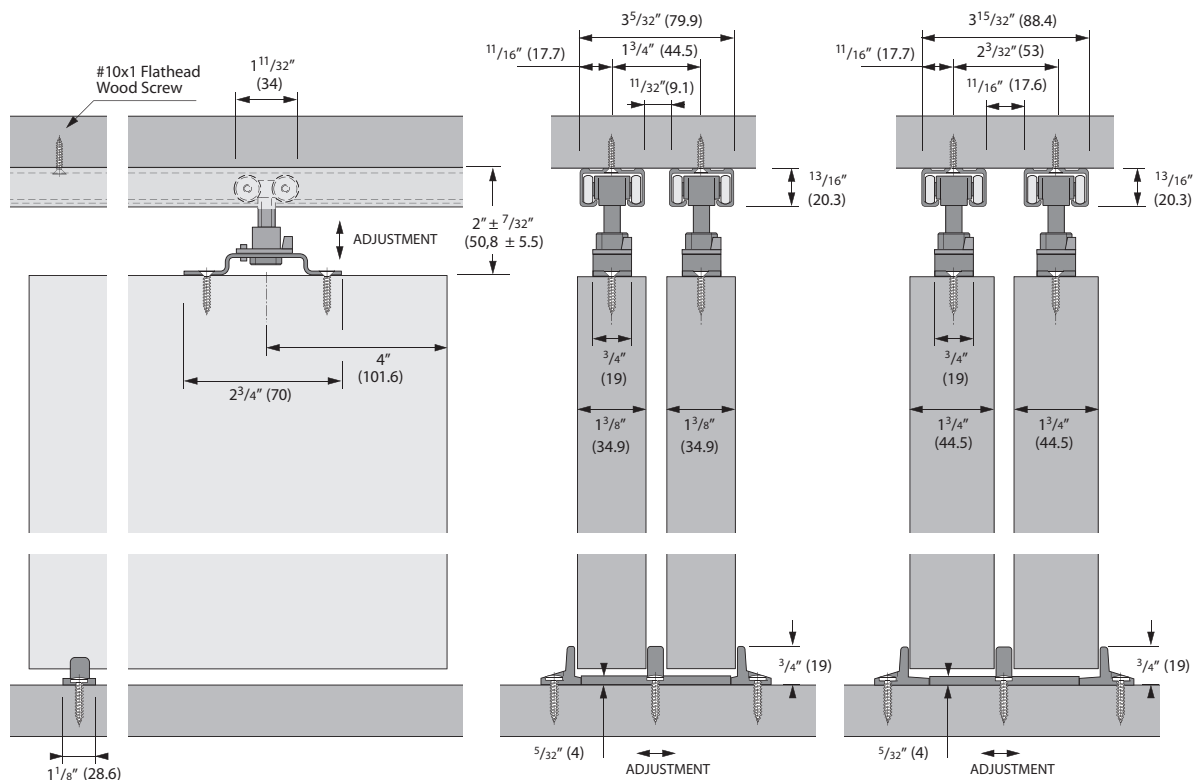
for door thickness $1\frac{3}{8}"$ (34.9 mm) and $1\frac{3}{4}"$ (44.4 mm), top mount, adjustable



Grant 75E By-pass

The Grant 75E Series is a medium duty commercial and residential grade sliding door hardware series for by-passing installations. Applications include doors between rooms, closet doors, cabinets, storage walls, and partitions.

- Precision ball bearing wheels ensure a smooth, quiet, and long lasting performance
- Pre-drilled aluminum box track hides the hardware
- Quick release mechanism for easy door installation and adjustment
- $\frac{7}{16}"$ (12.7 mm) vertical adjustment; minimal headroom required
- Track is available in lengths up to 16' (4800 mm)
- Flexible system – 75E tracks and carriers also used in Bi-fold 50 series
- Bi-parting applications achieved by adding an additional 75E Hardware set
- Meets and/or exceeds ANSI/BHMA standards



Technical specifications are subject to change without notice

Specifications:

Mounting: Top
Adjustment: $\frac{7}{16}$ " (11.1 mm) vertical
Door thickness: $1\frac{3}{8}$ " (34.9 mm) and $1\frac{3}{4}$ " (44.4 mm)
Headroom: $1\frac{25}{32}$ " (45.2 mm) min., $2\frac{7}{32}$ " (56.4 mm) max.
Application: By-passing

Grant 75E By-pass Series door hardware is available in four purchasing options

Option I – Complete package

Includes two- mill finish pre-cut tracks, one- By-pass hardware set, all necessary screws, and installation instructions

By-pass Hardware and track set

Length	Order no.	PU
4' (1200 mm)	113 534 1	5 sets
5' (1500 mm)	113 534 2	5 sets
6' (1800 mm)	113 534 3	5 sets
8' (2400 mm)	113 534 4	5 sets

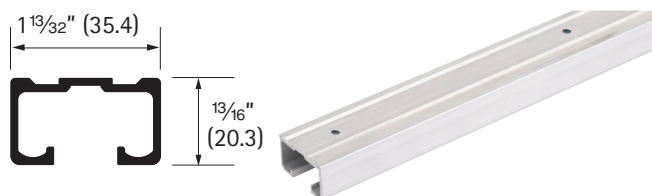
For longer track application order hardware set and track separately

Option II

Track only

Single track 50E

Aluminum extruded, pre-drilled holes



Length	Order no.	PU
3' (914 mm)	113 440 6	each
4' (1200 mm)	113 439 9	each
5' (1500 mm)	113 440 0	each
6' (1800 mm)	113 440 1	each
8' (2400 mm)	113 440 2	each
10' (3000 mm)	113 440 3	each
12' (3600 mm)	113 440 4	each
16' (4800 mm)	113 440 5	each

Screws not included - recommend #10 Flat Head

Option III

Hardware set only

**Grant 75E By-pass hardware set
(without track)**

The hardware set includes:
4 carriers 50E with precision ball bearing wheels
4 quick release top plates
1 adjustable floor guide 114
necessary screws
installation instructions

Article	Order no.	PU
Hardware set	113 533 5	10 sets

Option IV

Separate components

Grant 75E components**Carrier 50E with quick release top plate**

Four precision ball bearing wheels, adjustable

Screws included

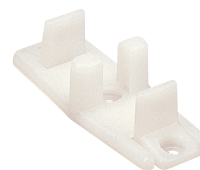


Article	Order no.	PU
Carrier 50E	113 432 2	10

Floor Guide 114

Nylon, adjustable for doors $\frac{3}{4}$ " to $1\frac{3}{4}$ " (19 to 44.4 mm), for by-passing door installations, screws included

Dimensions: 3" x 1 $\frac{1}{8}$ " (76.2 x 28.6 mm)



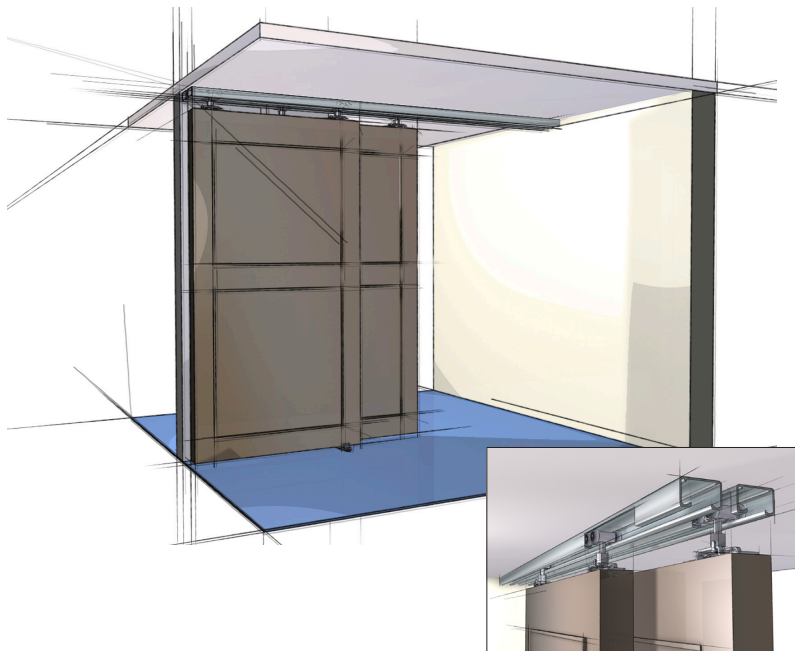
Finish	Order no.	PU
Floor guide 114	050 102	50

By-passing Door Set

Grant 150E By-pass

up to 150 lbs/door (68 kg/door)

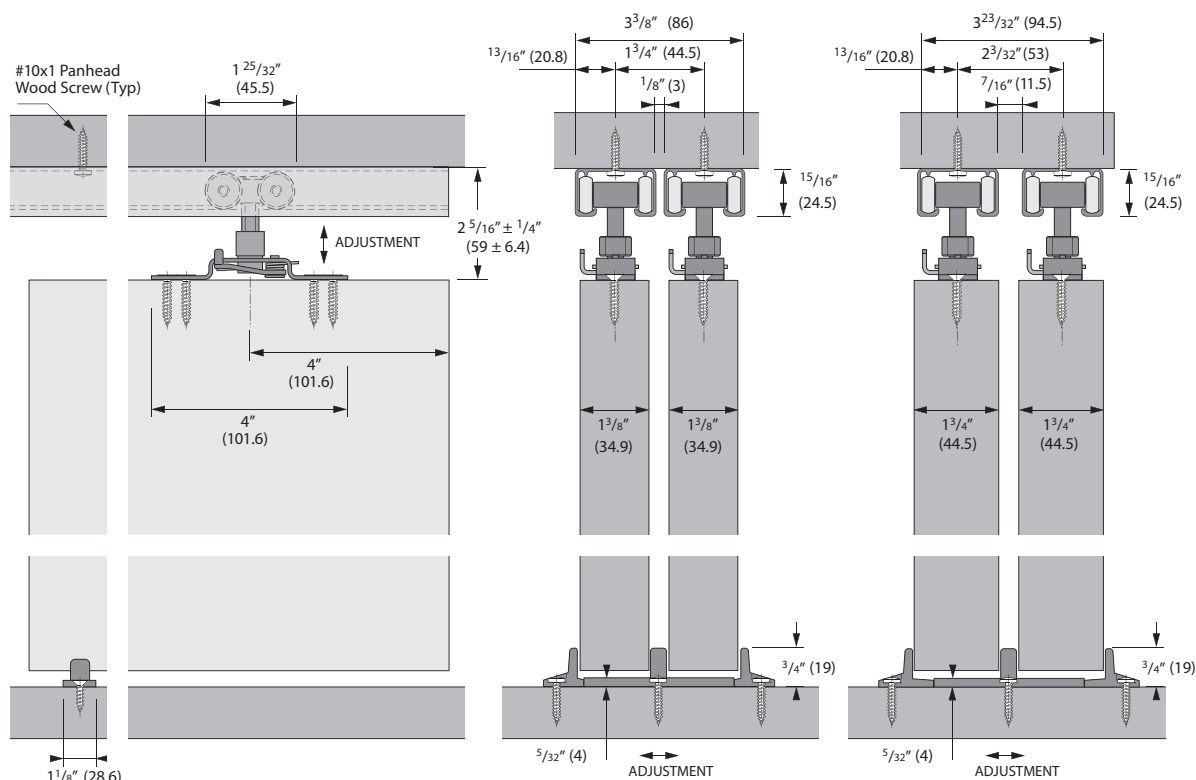
for door thickness 1 3/8" (34.9 mm) and 1 3/4" (44.4 mm), top mount, adjustable



Grant 150E By-pass

The Grant 150E Series is a medium duty commercial and residential grade sliding door hardware series for by-passing installations. Applications include doors between rooms, closet doors, cabinets, storage walls, and partitions.

- Precision ball bearing wheels ensure a smooth, quiet, and long lasting performance
- Pre-drilled aluminum box track hides the hardware
- Spring loaded quick release mechanism for easy door installation and adjustment
- 1/2" (11.1 mm) vertical adjustment; minimal headroom required
- Track is available in lengths up to 16' (4800 mm)
- Flexible system – 150E tracks and carriers also used in Bi-fold/Multi-fold 150 series
- Bi-parting applications achieved by adding an additional 150E Hardware set
- Meets and/or exceeds ANSI/BHMA standards



Technical specifications are subject to change without notice

Specifications:

Mounting: Top
 Adjustment: ½" (12.7 mm) vertical
 Door thickness: 1 ⅝" (34.9 mm) and 1 ¾" (44.4 mm)
 Headroom: 2 ⅙" (52.4 mm) min., 2 ⅞" (65.1 mm) max.
 Application: By-passing

Grant 150E By-pass Series door hardware is available in four purchasing options**Option I – Complete package**

Includes two- mill finish pre-cut tracks, one- By-pass hardware set, all necessary screws, and installation instructions

By-pass Hardware and track set

Length	Order no.	PU
4' (1200 mm)	113 535 3	5 sets
5' (1500 mm)	113 535 4	5 sets
6' (1800 mm)	113 535 5	5 sets
8' (2400 mm)	113 535 6	5 sets

For longer track application order hardware set and track separately

Option II

Track only

Single track 150E

Aluminum extruded, pre-drilled holes



Length	Order no.	PU
4' (1200 mm)	113 443 1	each
5' (1500 mm)	113 443 2	each
6' (1800 mm)	113 443 3	each
8' (2400 mm)	113 443 4	each
10' (3000 mm)	113 443 5	each
12' (3600 mm)	113 443 6	each
16' (4800 mm)	113 443 7	each

Screws not included - recommend #10 Pan Head

Option III

Hardware set only

**Grant 150E By-pass hardware set
(without track)**

The hardware set includes:

- 4 carriers 150E with precision ball bearing wheels
- 4 quick release top plates
- 1 adjustable floor guide 114
- necessary screws
- installation instructions

Article	Order no.	PU
Hardware set	113 533 6	10 sets

Option IV

Separate components

Grant 150E components**Carrier 150E with quick release top plate**

Four precision ball bearing wheels, adjustable

Steel, spring loaded quick release

Screws included

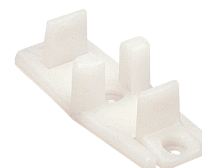


Article	Order no.	PU
Carrier 150E	113 516 3	10

Floor Guide 114

Nylon, adjustable for doors ¾" to 1 ¾" (19 to 44.4 mm), for by-passing door installations, screws included

Dimensions: 3" x 1 ⅞" (76.2 x 28.6 mm)

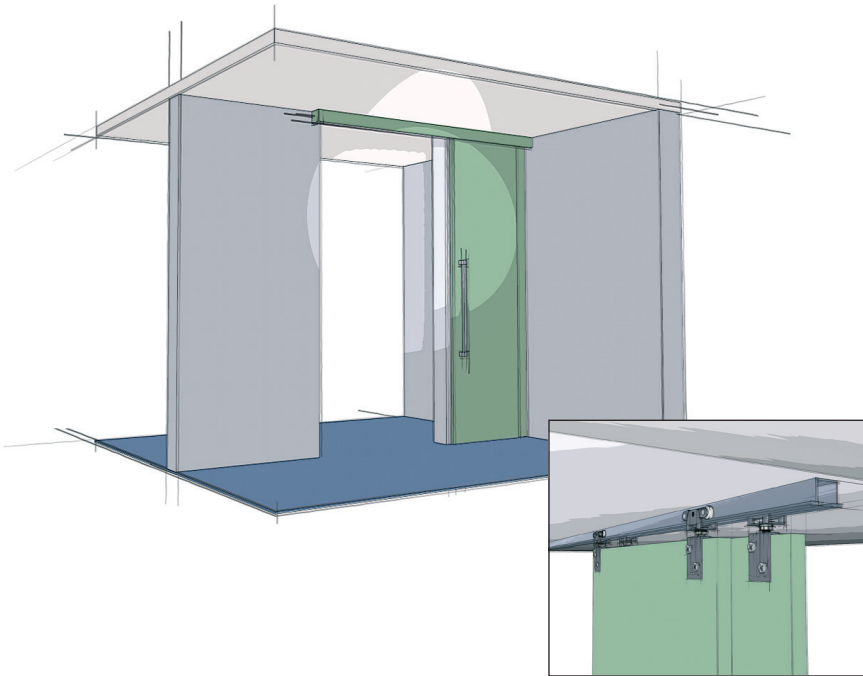


Finish	Order no.	PU
Floor guide 114	050 102	50

By-passing Door Sets

Top Line Grant 72-034

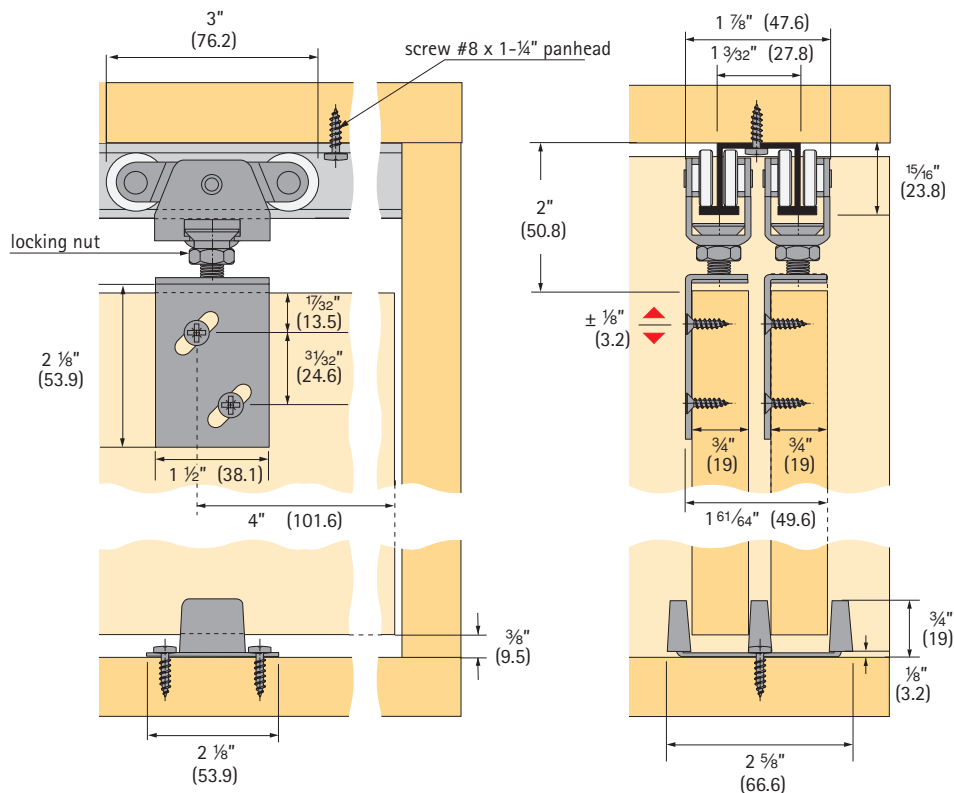
up to 150 lbs/door (68 kg/door), double track
for door thickness $\frac{3}{4}$ " (19 mm), side mount, adjustable



Top Line Grant 72-034

A medium duty commercial and residential grade sliding door hardware series ideal for by-passing installations. Applications include doors between rooms, closet doors, cabinets, storage walls and partitions.

- For $\frac{3}{4}$ " doors weighing up to 150 lbs (68 kg), optional nylon wheel carrier up to 100 lbs (45 kg)
- High quality precision ball-bearing wheels for quiet and effortless performance
- Heavy duty aluminum Double I-beam track; jump proof design
- Pivoting rocker arms ensure track-carrier contact.
- Ball and socket suspension compensates for minor header misalignment.
- Lock nut ensures permanent positioning.
- Serrations in apron permit vertical adjustment.
- Meets and/or exceeds ANSI/BHMA standards
- Made in USA



Technical specifications are subject to change without notice

Specifications:

Mounting:	Side
Adjustment:	¼" (6.4 mm) vertical
Door thickness:	¾" (19 mm)
Headroom:	1⅞" (47.6 mm) min., 2⅞" (53.9 mm) max
Application:	By-passing

Top Line Grant 72-034 door hardware is available in four purchasing options

Option I

Complete package: includes track, hardware set, and all screws

Hardware and track

Length	Order no.	PU
4' (1200 mm)	113 335 1	5 sets
6' (1800 mm)	113 335 2	5 sets
8' (2400 mm)	113 335 3	5 sets

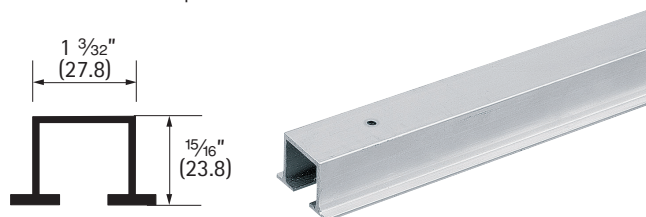
For longer track application order hardware set and track separately

Option II

Track only

Double track 7002

Aluminum extruded, pre-drilled holes



Length	Order no.	PU
4' (1200 mm)	050 526	5
5' (1500 mm)	050 527	5
6' (1800 mm)	050 528	5
8' (2400 mm)	050 529	5
10' (3000 mm)	050 530	5
12' (3600 mm)	050 531	5
16' (4800 mm)	050 532	5

Screws not included - recommend #8 Pan Head

Tracks 8' and under are notched at one end for easy access

Option III

Hardware set only

Top Line Grant 72-034 hardware set
(without track)

The hardware set includes:

- 4 carriers 7000 precision ball bearing wheels
- 4 aprons 7034
- 1 floor guide 116
- 1 wrench
- necessary screws
- installation instructions

Article	Order no.	PU
Hardware set	113 335 0	10 sets

Option IV

Separate components

Top Line Grant 72-034 components**Carrier 7000 ball bearing**

Steel, precision ball bearing wheels,
up to 150 lbs/door (68 kg/door)



Finish	Order no.	PU
zinc-plated	113 333 9	100

Apron 7034

Cold rolled steel, ¾" offset,
adjustable

Screws included



Finish	Order no.	PU
zinc-plated	050 563	100

Floor guide 116

Steel/Nylon

Screws included



Finish	Order no.	PU
zinc-plated	050 103	50

Optional parts (not included in set)**Carrier 7000 nylon**

Steel, wheel nylon,
up to 100 lbs/door (45 kg/door)



Finish	Order no.	PU
zinc-plated	113 333 8	100

Bumper stop 7014

Steel, track mounted,
rubber stop, 2 required per track



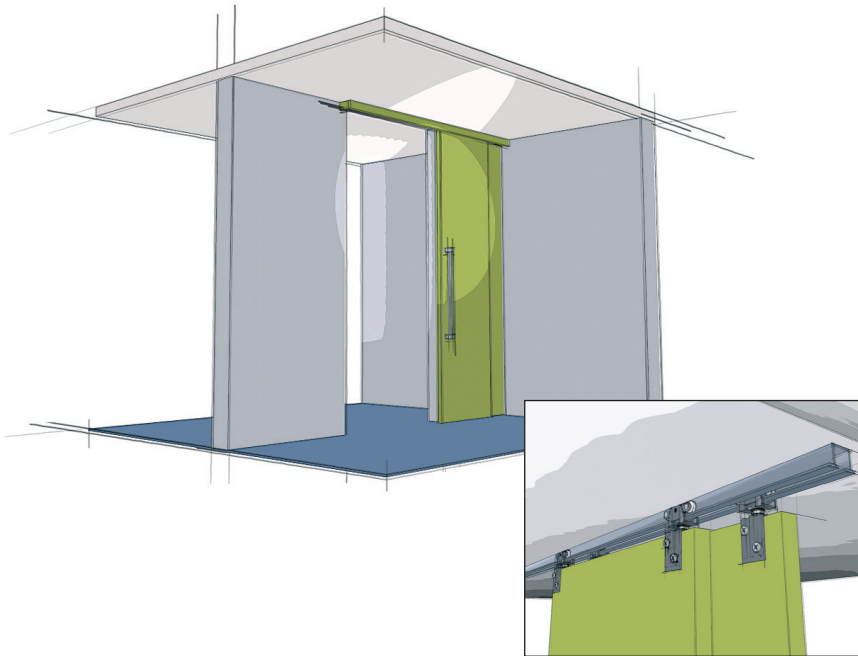
Finish	Order no.	PU
zinc-plated	050 561	20

By-passing Door Sets

Top Line Grant 72-118

up to 150 lbs/door (68 kg/door), double track

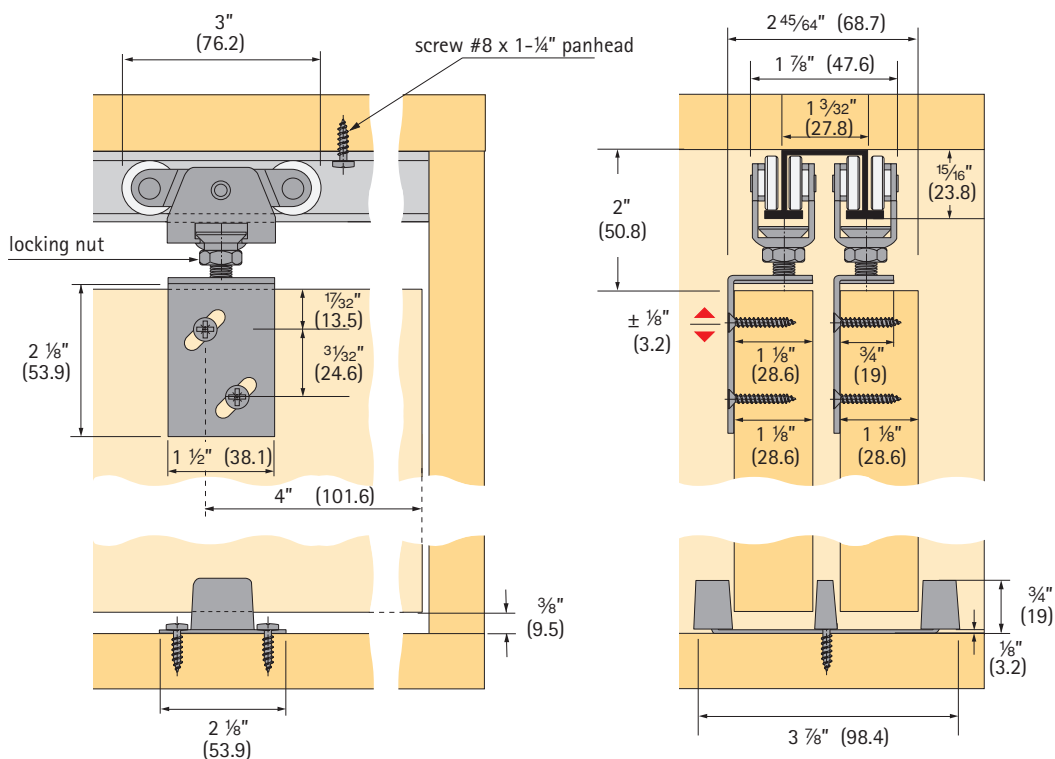
for door thickness 1 1/8" (28.6 mm), side mount, adjustable



Top Line Grant 72-118

A medium duty commercial and residential grade sliding door hardware series ideal for by-passing installations. Applications include doors between rooms, closet doors, cabinets, storage walls, and partitions.

- For 1 1/8" doors weighing up to 150 lbs (68 kg), optional nylon wheel carrier up to 100 lbs (45 kg)
- High quality precision ball-bearing wheels for quiet and effortless performance
- Heavy duty aluminum Double I-beam track; jump proof design
- Pivoting rocker arms ensure track-carrier contact.
- Ball and socket suspension compensates for minor header misalignment.
- Lock nut ensures permanent positioning.
- Serrations in apron permit vertical adjustment.
- Meets and/or exceeds ANSI/BHMA standards
- Made in USA



Specifications:

Mounting:	Side
Adjustment:	¼" (6.4 mm) vertical
Door thickness:	1½" (28.6 mm)
Headroom:	1⅞" (47.6 mm) min., 2⅞" (53.9 mm) max.
Application:	By-passing

Top Line Grant 72-118 door hardware is available in four purchasing options**Option I**

Complete package: includes track, hardware set, and all screws

Hardware and track

Length	Order no.	PU
4' (1200 mm)	113 335 5	5 sets
5' (1500 mm)	113 335 6	5 sets
8' (2400 mm)	113 335 7	5 sets

For longer track application order hardware set and track separately

Option II

Track only

Double track 7002

Aluminum extruded, pre-drilled holes



Length	Order no.	PU
4' (1200 mm)	050 526	5
5' (1500 mm)	050 527	5
6' (1800 mm)	050 528	5
8' (2400 mm)	050 529	5
10' (3000 mm)	050 530	5
12' (3600 mm)	050 531	5
16' (4800 mm)	050 532	5

Screws not included - recommend #8 Pan Head

Tracks 8' and under are notched at one end for easy access

Option III

Hardware set only

Top Line Grant 72-118 hardware set
(without track)

The hardware set includes:

- 4 carriers 7000 precision ball bearing wheels
- 2 aprons 7034 (front door)
- 2 aprons 7138 (rear door)
- 1 floor guide 119
- 1 wrench
- necessary screws
- installation instructions

Article	Order no.	PU
Hardware set	113 335 4	10 sets

Option IV

Separate components

Top Line Grant 72-118 components**Carrier 7000 ball bearing**

Steel, precision ball bearing wheels, up to 150 lbs/door (68 kg/door)



Finish	Order no.	PU
zinc-plated	113 333 9	100

Apron 7034/7138

Cold rolled steel, adjustable

Screws included

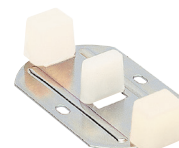


Article	Finish	Order no.	PU
① apron 7034, ¾" offset	zinc-plated	050 563	100
② apron 7138, 1⅞" offset	zinc-plated	050 565	100

Floor guide 119

Steel/Nylon

Screws included



Finish	Order no.	PU
zinc-plated	050 106	50

Optional parts**Carrier 7000 nylon**

Steel, wheel nylon, up to 100 lbs/door (45 kg/door)



Finish	Order no.	PU
zinc-plated	113 333 8	100

Bumper stop 7014

Steel, track mounted, rubber stop, 2 required per track



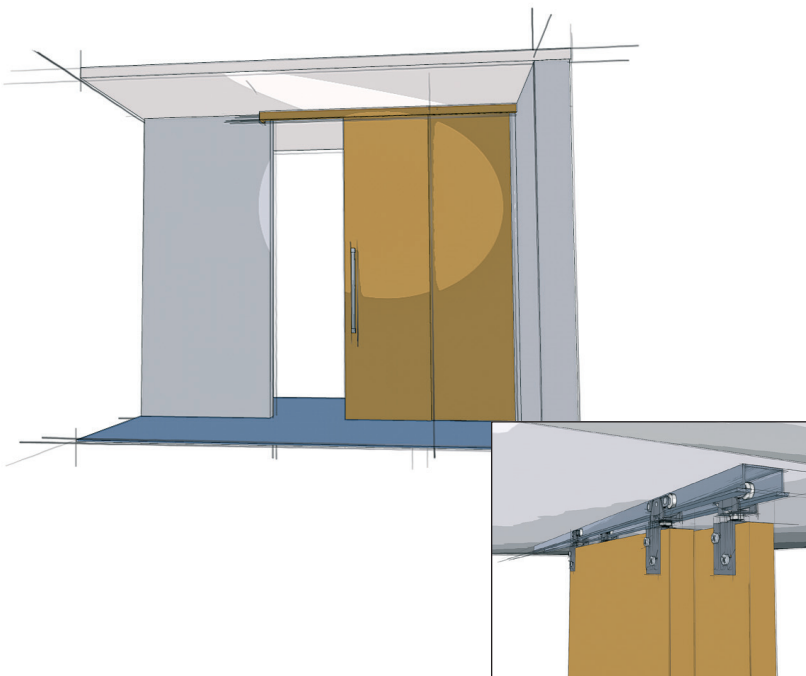
Finish	Order no.	PU
zinc-plated	050 561	20

By-passing Door Sets

Top Line Grant 72-138

up to 150 lbs/door (68 kg/door), double track

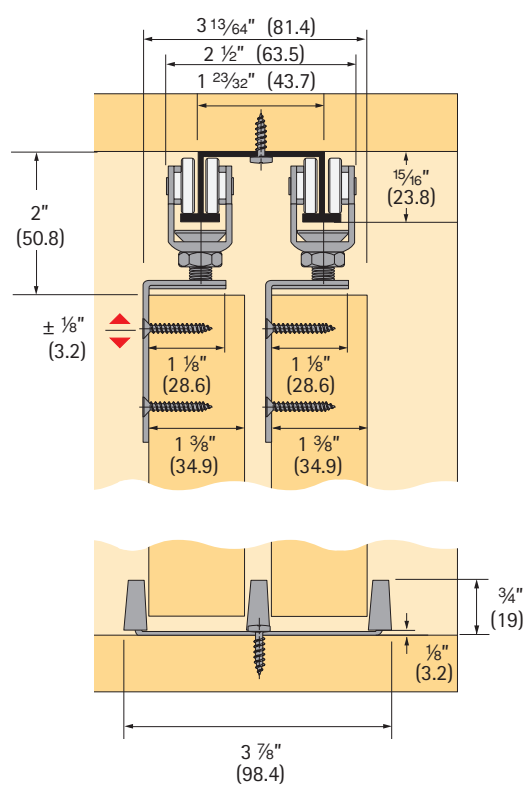
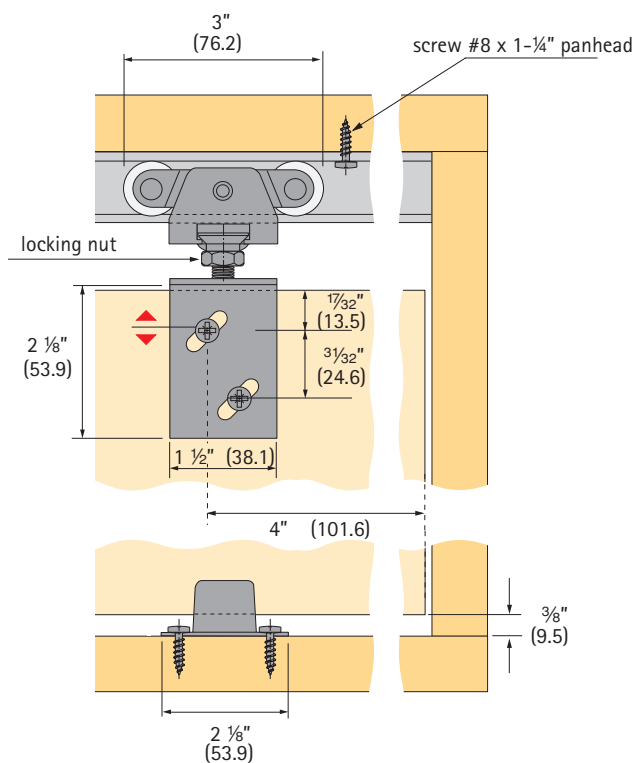
for door thickness 1 $\frac{3}{8}$ " (34.9 mm), side mount, adjustable



Top Line Grant 72-138

A medium duty commercial and residential grade sliding door hardware series ideal for by-passing installations. Applications include doors between rooms, closet doors, cabinets, storage walls, and partitions.

- For 1 $\frac{3}{8}$ " doors weighing up to 150 lbs (68 kg), optional nylon wheel carrier up to 100 lbs (45 kg)
- High quality precision ball-bearing wheels for quiet and effortless performance
- Heavy duty aluminum Double I-beam track; jump proof design
- Pivoting rocker arms ensure track-carrier contact.
- Ball and socket suspension compensates for minor header misalignment.
- Lock nut ensures permanent positioning.
- Serrations in apron permit vertical adjustment.
- Meets and/or exceeds ANSI/BHMA standards
- Made in USA



Technical specifications are subject to change without notice

Specifications:

Mounting:	Side
Adjustment:	¼" (6.4 mm) vertical
Door thickness:	1⅜" (34.9 mm)
Headroom:	1⅞" (47.6 mm) min., 2⅞" (53.9 mm) max.
Application:	By-passing

Top Line Grant 72-138 door hardware is available in four purchasing options**Option I**

Complete package: includes track, hardware set, and all screws

Hardware and track

Length	Order no.	PU
4' (1200 mm)	113 336 4	5 sets
5' (1500 mm)	113 336 5	5 sets
6' (1800 mm)	113 336 6	5 sets
8' (2400 mm)	113 336 7	5 sets

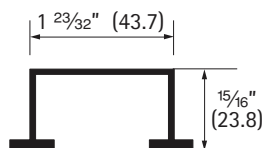
For longer track application order hardware set and track separately

Option II

Track only

Double track 7003

Aluminum extruded, pre-drilled holes



Length	Order no.	PU
4' (1200 mm)	050 533	5
5' (1500 mm)	050 534	5
6' (1800 mm)	050 535	5
8' (2400 mm)	050 536	5
10' (3000 mm)	050 537	5
12' (3600 mm)	050 538	5
16' (4800 mm)	050 539	5

Screws not included - recommend #8 Pan Head

Tracks 8' and under are notched at one end for easy access

Option III

Hardware set only

Top Line Grant 72-138 hardware set
(without track)

The hardware set includes:

- 4 carriers 7000 precision ball bearing wheels
- 4 aprons 7138
- 1 floor guide 117
- 1 wrench
- necessary screws and installation instructions

Article	Order no.	PU
Hardware set	113 336 3	10 sets

Option IV

Separate components

Top Line Grant 72-138 components**Carrier 7000 ball bearing**Steel, precision ball bearing wheels,
up to 150 lbs/door (68 kg/door)

Finish	Order no.	PU
zinc-plated	113 333 9	100

Apron 7138Cold rolled steel,
adjustable, 1 ⅞" offset

Screws included



Finish	Order no.	PU
zinc-plated	050 565	100

Floor guide 117

Steel/Nylon

Screws included



Finish	Order no.	PU
zinc-plated	050 104	50

Optional parts (not included in set)**Carrier 7000 nylon**Steel, wheel nylon,
up to 100 lbs/door (45 kg/door)

Finish	Order no.	PU
zinc-plated	113 333 8	100

Bumper stop 7014Steel, track mounted,
rubber stop, 2 required per track

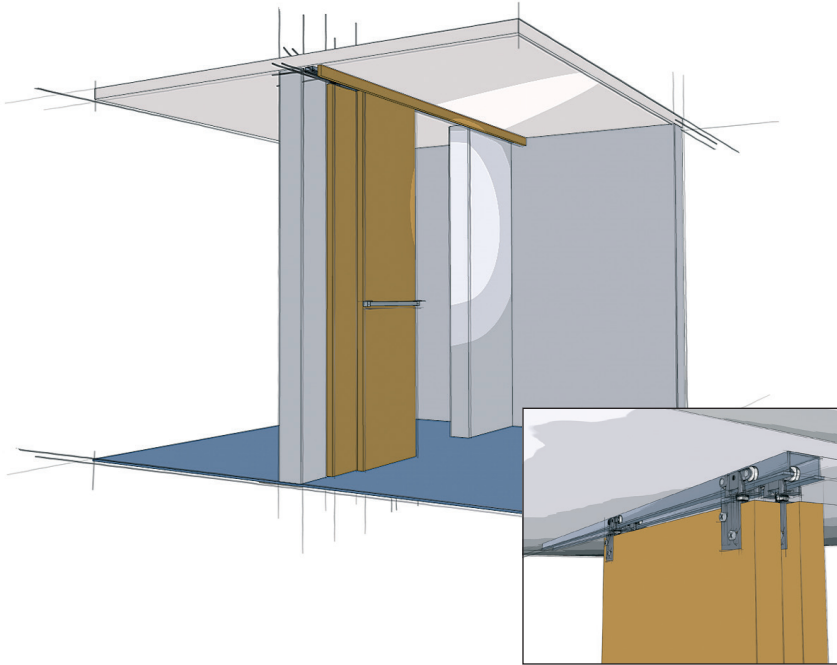
Finish	Order no.	PU
zinc-plated	050 561	20

By-passing Door Sets

Top Line Grant 72-134

up to 150 lbs/door (68 kg/door), double track

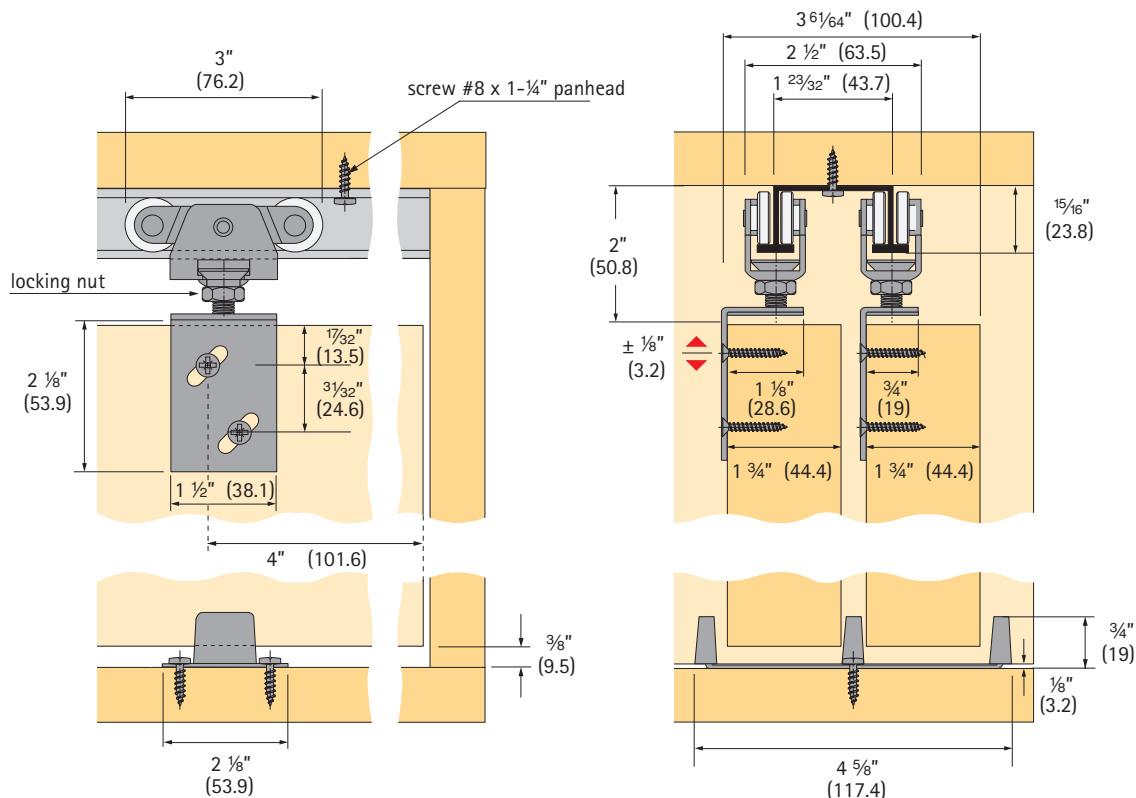
for door thickness 1 3/4" (44.4 mm), side mount, adjustable



Top Line Grant 72-134

A medium duty commercial and residential grade sliding door hardware series ideal for by-passing installations. Applications include doors between rooms, closet doors, cabinets, storage walls, and partitions.

- For 1 3/4" doors weighing up to 150 lbs (68 kg), optional nylon wheel carrier up to 100 lbs (45 kg)
- High quality precision ball-bearing wheels for quiet and effortless performance
- Heavy duty aluminum Double I-beam track; jump proof design
- Pivoting rocker arms ensure track-carrier contact.
- Ball and socket suspension compensates for minor header misalignment.
- Lock nut ensures permanent positioning.
- Serrations in apron permit vertical adjustment.
- Meets and/or exceeds ANSI/BHMA standards
- Made in USA



Specifications:

Mounting:	Side
Adjustment:	¼" (6.4 mm) vertical
Door thickness:	1¾" (44.4 mm)
Headroom:	1⅞" (47.6 mm) min., 2⅞" (53.9 mm) max
Application:	By-passing

Top Line Grant 72-134 door hardware is available in four purchasing options

Option I

Complete package, includes track, hardware set, and all screws

Hardware and track

Length	Order no.	PU
4' (1200 mm)	113 335 9	5 sets
5' (1500 mm)	113 336 0	5 sets
6' (1800 mm)	113 336 1	5 sets
8' (2400 mm)	113 336 2	5 sets

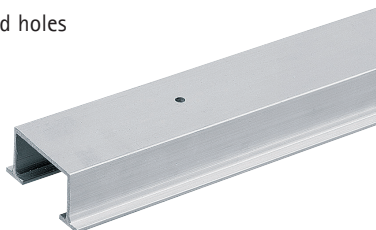
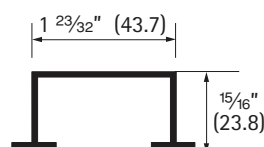
For longer track application order hardware set and track separately

Option II

Track only

Double track 7003

Aluminum extruded, pre-drilled holes



Length	Order no.	PU
4' (1200 mm)	050 533	5
5' (1500 mm)	050 534	5
6' (1800 mm)	050 535	5
8' (2400 mm)	050 536	5
10' (3000 mm)	050 537	5
12' (3600 mm)	050 538	5
16' (4800 mm)	050 539	5

Screws not included - recommend #8 Pan Head

Tracks 8' and under are notched at one end for easy access

Option III

Hardware set only

Top Line Grant 72-134 hardware set
(without track)

The hardware set includes:

- 4 carriers 7000 precision ball bearing wheels
- 2 aprons 7034 (front door)
- 2 aprons 7138 (rear door)
- 1 floor guide 118
- 1 wrench
- necessary screws and installation instructions

Article	Order no.	PU
Hardware set	113 335 8	10 sets

Option IV

Separate components

Top Line Grant 72-134 components**Carrier 7000 ball bearing**

Steel, precision ball bearing wheels,
up to 150 lbs/door (68 kg/door)



Finish	Order no.	PU
zinc-plated	113 333 9	100

Apron 7034/7138

Cold rolled steel,
adjustable

Screws included

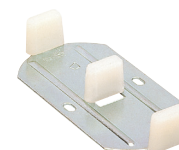


Article	Finish	Order no.	PU
① apron 7034, ¾" offset	zinc-plated	050 563	100
② apron 7138, 1⅞" offset	zinc-plated	050 565	100

Floor guide 118

Steel/Nylon

Screws included



Finish	Order no.	PU
zinc-plated	050 105	50

Optional parts (not included in set)**Carrier 7000 nylon**

Steel, wheel nylon,
up to 100 lbs/door (45 kg/door)



Finish	Order no.	PU
zinc-plated	113 333 8	100

Bumper stop 7014

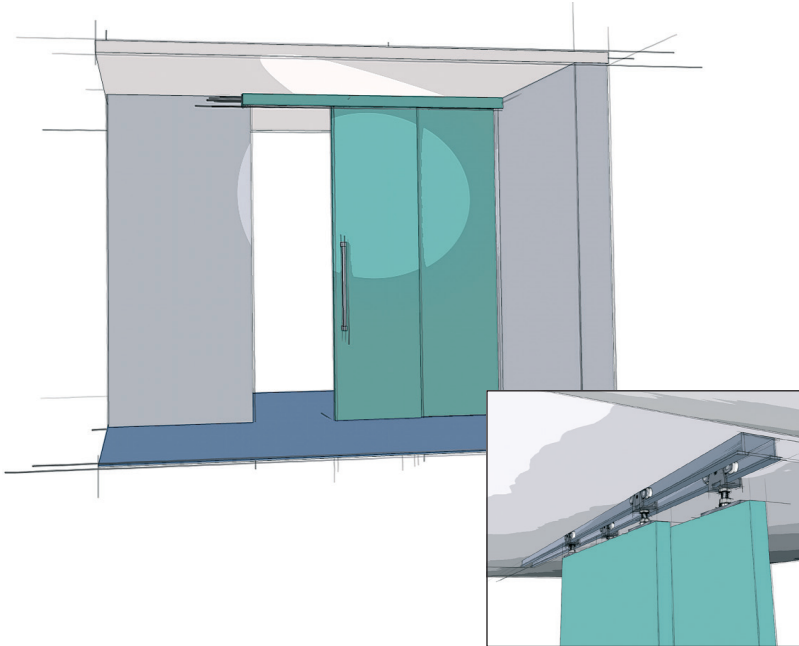
Steel, track mounted,
rubber stop, 2 required per track



Finish	Order no.	PU
zinc-plated	050 561	20

Top Line Grant 72-222

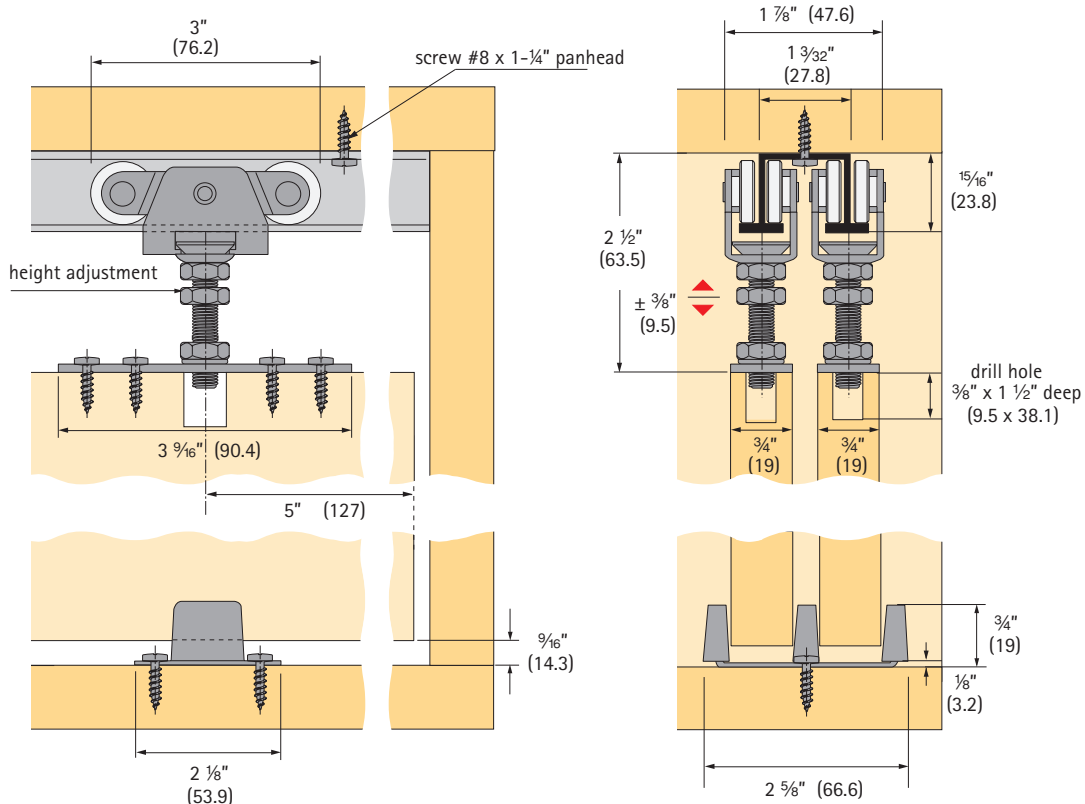
up to 150 lbs/door (68 kg/door), double track
for door thickness $\frac{3}{4}$ " (19 mm), top mount, adjustable



Top Line Grant 72-222

A medium duty commercial and residential grade sliding door hardware series ideal for by-passing installations. Applications include doors between rooms, closet doors, cabinets, storage walls and partitions.

- For ¾" doors weighing up to 150 lbs (68 kg), optional nylon wheel carrier up to 100 lbs (45 kg)
- High quality precision ball-bearing wheels for quiet and effortless performance
- Heavy duty aluminum Double I-beam track; jump proof design
- Pivoting rocker arms ensure track-carrier contact.
- Ball and socket suspension compensates for minor header misalignment.
- Lock nut ensures permanent positioning.
- Vertical adjustment ¾" (19.1 mm)
- Meets and/or exceeds ANSI/BHMA standards
- Made in USA



Technical specifications are subject to change without notice

Specifications:

Mounting:	Top
Adjustment:	¾" (19.1 mm) vertical
Door thickness:	¾" (19 mm)
Headroom:	2½" (53.9 mm) min., 2⅞" (73 mm) max.
Application:	By-passing

Top Line Grant 72-222 door hardware is available in four purchasing options

Option I

Complete package: includes track, hardware set, and all screws

Hardware and track

Length	Order no.	PU
4' (1200 mm)	113 336 9	5 sets
5' (1500 mm)	113 337 0	5 sets
6' (1800 mm)	113 337 1	5 sets
8' (2400 mm)	113 337 2	5 sets

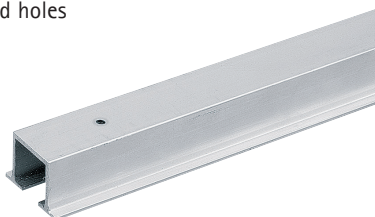
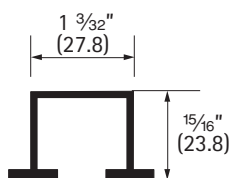
For longer track application order hardware set and track separately

Option II

Track only

Double track 7002

Aluminum extruded, pre-drilled holes



Length	Order no.	PU
4' (1200 mm)	050 526	5
5' (1500 mm)	050 527	5
6' (1800 mm)	050 528	5
8' (2400 mm)	050 529	5
10' (3000 mm)	050 530	5
12' (3600 mm)	050 531	5
16' (4800 mm)	050 532	5

Screws not included - recommend #8 Pan Head

Tracks 8' and under are notched at one end for easy access

Option III

Hardware set only

Top Line Grant 72-222 hardware set
(without track)

The hardware set includes:

- 4 carriers 7000 precision ball bearing wheels
- 4 top plates 7222
- 1 floor guide 116
- 1 wrench
- necessary screws
- installation instructions

Article	Order no.	PU
Hardware set	113 336 8	10 sets

Option IV

Separate components

Top Line Grant 72-222 components**Carrier 7000 ball bearing**

Steel, precision ball bearing wheels,
up to 150 lbs/door (68 kg/door)

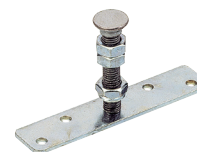


Finish	Order no.	PU
zinc-plated	113 333 9	100

Top plate 7222

with pendant bolt,
steel, adjustable

Screws included



Finish	Order no.	PU
zinc-plated	050 566	100

Floor guide 116

Steel/Nylon

Screws included



Finish	Order no.	PU
zinc-plated	050 103	50

Optional parts (not included in set)**Carrier 7000 nylon**

Steel, wheel nylon,
up to 100 lbs/door (45 kg/door)



Finish	Order no.	PU
zinc-plated	113 333 8	100

Bumper stop 7014

Steel, track mounted,
rubber stop, 2 required per track



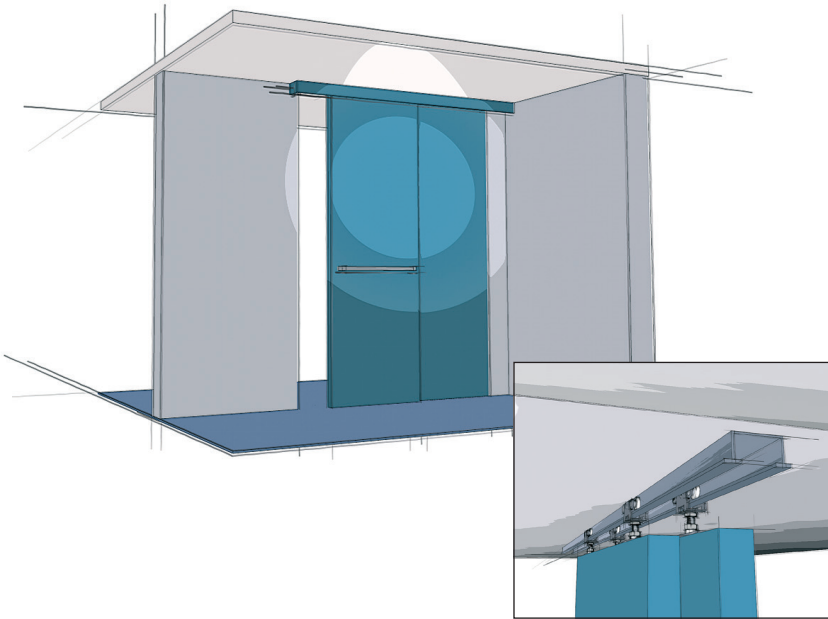
Finish	Order no.	PU
zinc-plated	050 561	20

By-passing Door Sets

Top Line Grant 72-223

up to 150 lbs/door (68 kg/door), double track

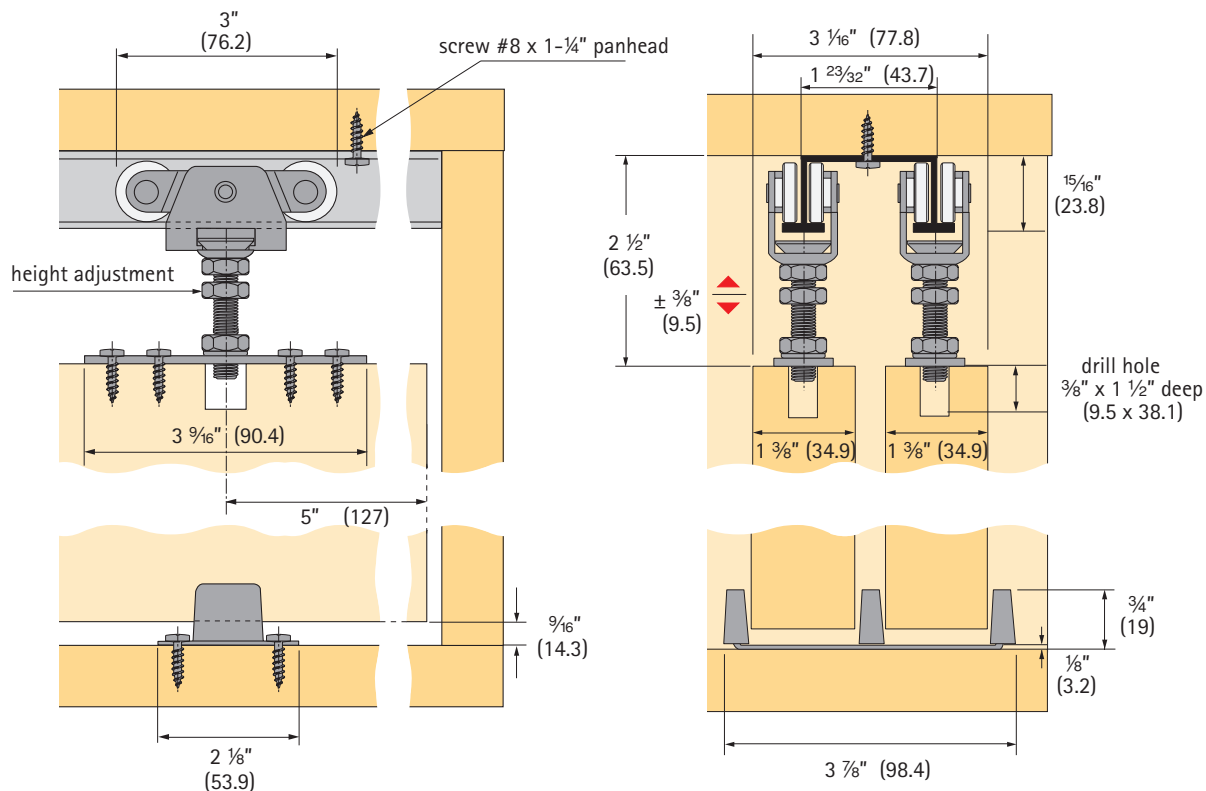
for door thickness 1 $\frac{3}{8}$ " (34.9 mm), top mount, adjustable



Top Line Grant 72-223

A medium duty commercial and residential grade sliding door hardware series ideal for by-passing installations. Applications include doors between rooms, closet doors, cabinets, storage walls and partitions.

- For 1 $\frac{3}{8}$ " doors weighing up to 150 lbs (68 kg), optional nylon wheel carrier up to 100 lbs (45 kg)
- High quality precision ball-bearing wheels for quiet and effortless performance
- Heavy duty aluminum Double I-beam track; jump proof design
- Pivoting rocker arms ensure track-carrier contact.
- Ball and socket suspension compensates for minor header misalignment.
- Lock nut ensures permanent positioning.
- Vertical adjustment $\frac{3}{4}$ " (19.1 mm)
- Meets and/or exceeds ANSI/BHMA standards
- Made in USA



Technical specifications are subject to change without notice

Specifications:

Mounting: Top
 Adjustment: $\frac{3}{4}$ " (19.1 mm) vertical
 Door thickness: $1\frac{3}{8}$ " (34.9 mm)
 Headroom: $2\frac{1}{8}$ " (53.9 mm) min., $2\frac{7}{8}$ " (73 mm) max.
 Application: By-passing

Top Line Grant 72-223 door hardware is available in four purchasing options

Option I

Complete package, includes track, hardware set, and all screws

Hardware and track

Length	Order no.	PU
4' (1200 mm)	113 337 4	5 sets
5' (1500 mm)	113 337 5	5 sets
6' (1800 mm)	113 337 6	5 sets
8' (2400 mm)	113 337 7	5 sets

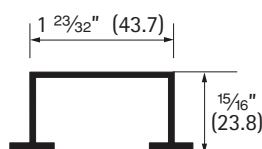
For longer track application order hardware set and track separately

Option II

Track only

Double track 7003

Aluminum extruded, pre-drilled holes



Length	Order no.	PU
4' (1200 mm)	050 533	5
5' (1500 mm)	050 534	5
6' (1800 mm)	050 535	5
8' (2400 mm)	050 536	5
10' (3000 mm)	050 537	5
12' (3600 mm)	050 538	5
16' (4800 mm)	050 539	5

Screws not included - recommend #8 Pan Head

Tracks 8' and under are notched at one end for easy access

Option III

Hardware set only

Top Line Grant 72-223 hardware set
(without track)

The hardware set includes:

- 4 carriers 7000 precision ball bearing wheels
- 4 top plates 7222
- 1 floor guide 117
- 1 wrench
- necessary screws and installation instructions

Article	Order no.	PU
Hardware set	113 337 3	10 sets

Option IV

Separate components

Top Line Grant 72-223 components**Carrier 7000 ball bearing**

Steel, precision ball bearing wheels,
up to 150 lbs/door (68 kg/door)



Finish	Order no.	PU
zinc-plated	113 333 9	100

Top plate 7222

with pendant bolt,
steel, adjustable

Screws included



Finish	Order no.	PU
zinc-plated	050 566	100

Floor guide 117

Steel/Nylon

Screws included



Finish	Order no.	PU
zinc-plated	050 104	50

Optional parts (not included in set)**Carrier 7000 nylon**

Steel, wheel nylon,
up to 100 lbs/door (45 kg/door)



Finish	Order no.	PU
zinc-plated	113 333 8	100

Bumper stop 7014

Steel, track mounted,
rubber stop, 2 required per track



Finish	Order no.	PU
zinc-plated	050 561	20

