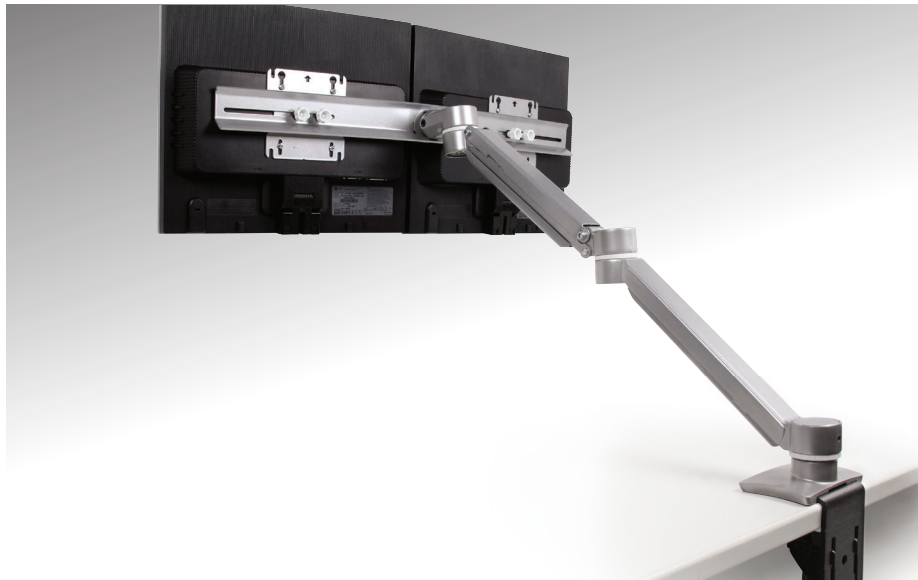


Ergonomic Products

Keyboard Arms | Trays | Keyboard Drawers | Monitor Arms & Lifts | CPU Holders



The Right Answer

The Right Answer is the solution that works as hard as you do. We make products that solve problems with precision and excellence. Our products are solutions.

Knape & Vogt® is in the business of motion, we're always moving forward and making products that move and move well. They are designed to help organize, customize and provide solutions for your work environment.

We've created a multi-level program with The Right Answer for you.



	<i>Performance Arms</i>	Performance Arms Performance Arms with Tray Combos	2-3
	<i>Sit-Stand Arms</i>	Sit-Stand Arms Sit-Stand Arms with Tray Combos	4
	<i>Dual Swivel Arms</i>	Dual Swivel Standard Length Dual Swivel Extended Length	4
	<i>Classic Arms</i>	Classic Arms Classic Arms with Tray Combos	5
	<i>Value Arms</i>	Value Arms Value Arms with Tray Combos	6-7
	<i>Custom Component Guide</i>	Which Arm is Right for You? Choose Your Keyboard Platform	8
	<i>Keyboard Trays & Mouse Supports</i>	Standard Keyboard Trays with Mouse Supports Full-Width Keyboard Trays & Mouse Supports Standard Trays (No Mouse Support)	9-10
	<i>Keyboard Tray Accessories</i>	Mouse Supports Palm Rests	11
	<i>Keyboard Drawers</i>	Keyboard Drawers	12-13
	<i>Dual Arms</i>	7080 Series - Long Neck Arm 7090 Series - Short Neck Arm 7090 Series - Storable Arm	13
	<i>Monitor Arms</i>	Single Screen Dual Screen	14-15
	<i>Monitor Arm Accessories</i>	Accessories	15
	<i>Monitor Lift</i>	Presto Monitor Trim-Lift Monitor Lift Options	16
	<i>CPU Holders</i>	Fixed Mount Storable Lockable	16-17
	<i>Specialty Products & Accessories</i>	Corner Maker Ergo Accessories	17

Performance Arms

Ergonomics is all about comfort and control. A keyboard system should be comfortable, offer the user better, healthier working position options, and move smoothly and intuitively.

.....



84342118
(8434D21 & PF1824-MPS)



8434D17 & 8434D21

Ovation Arm - Standard Length - 5 1/2"

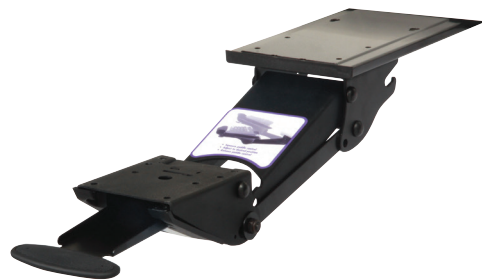
- Height range 2.3" above the track to -6.1" below the track
- Patented dial tilt adjustment
- Patented height indicator gauge
- Patented spring-assisted Lift-n-Lock™ system (no knobs or levers)
- 25° tilt range from +10° to -15°, with positive tilt lockout option
- 360° swivel at track, with dual swivel option (8400DS)
- 8434D17 - 17" glide track
- 8434D21 - 21 3/4" glide track



8424D21

Ovation Arm - Extended Length - 7 1/2"

- Height range 3.5" above the track to -7.3" below the track
- Patented dial tilt adjustment
- Patented height indicator gauge
- Patented spring-assisted Lift-n-Lock™ system (no knobs or levers)
- 25° tilt range from +10° to -15°, with positive tilt lockout option
- 360° swivel at track, with dual swivel option (8400DS)
- 21 3/4" glide track



KVAKP55-2T21 Patented Keynetix -

Extended Range Adjustable Keyboard Arm

- Height range 3.0" above the track to -6.7" below the track
- Single Keynetix paddle control to adjust both height and tilt simultaneously
- 30° tilt range from + 15° to -15° negative & positive tilt
- 360° swivel at track
- 21" track with EZ-Glide system

Performance Arms with Tray Combo

Knape & Vogt offers a comprehensive line of adjustable keyboard arms and tray combos to fit a variety of needs with optimal ergonomic features and adjustments.



84342118
(8434D21 & PF1824-MPS)

- Ovation Arm - Standard Length with 21 ³/₄" glide track (8434D21 See page 2)
- Comfort Keyboard Tray with Mouse Over Platform & Palm Rest (PF1824-MPS See page 9)
- Accommodates right- or left-hand mousing



84341701
(8434D17 & 6421D)

- Ovation Arm - Standard Length with 17" glide track (8434D17 See page 2)
- ABS Keyboard Tray with Slide-Through Mouse (6421D See page 9)
- Accommodates right- or left-hand mousing



SD-10-21
(KV AKP55-2T21 & PF1824-MPS)

- Patented Keynetix - Extended Range adjustable keyboard arm (KV AKP55-2T21 See page 2)
- 21" glide track
- Comfort Keyboard Tray with Mouse Over Platform & Palm Rest (PF1824-MPS See page 9)
- Accommodates right- or left-hand mousing



SD-14-21
(KV AKP55-2T21 & KV PC2524)

- Patented Keynetix - Extended Range adjustable keyboard arm (KV AKP55-2T21 See page 2)
- 21" track with EZ-Glide system
- 25" Wide Phenolic Keyboard & Mouse Platform with Palm Rest (KV PC2524 See page 10)
- Accommodates right- or left-hand mousing

Sit-Stand Arms

The original Sit-Stand Arms have been redesigned to provide better ergonomic support for both seated and standing positions. The new design builds on that ergonomic comfort by moving the user closer to the work surface.



84782118
(8478D21 & PF1824-MPS)

Sit-Stand Arm & Sit-Stand Arms with Tray Combo



8478D21

Momentum Sit-Stand Arm

- Momentum Sit-Stand Arm with 21 3/4" glide track
- Height range 8.3" above the track to -5.9" below the track
- Patented spring-assisted Lift-n-Lock™ braking mechanism
- Tilt adjustment from +10° to -15°, with positive tilt lockout option
- 360° swivel, with dual swivel option (8400DS)



8478D2101
(8478D21 & 6421D)

- Momentum Sit-Stand Arm with 21 3/4" glide track (8478D21 See Left)
- Plastic Keyboard Tray with Slide-Through Mouse (6421D See page 9)
- Accommodates right- or left-hand mousing



84782118
(8478D21 & PF1824-MPS)

- Momentum Sit-Stand Arm with 21 3/4" glide track (8478D21 See Left)
- Comfort Keyboard Tray with Mouse Over Platform & Palm Rest (PF1824-MPS See page 9)
- Accommodates right- or left-hand mousing

Dual Swivel Arms

The Momentum Arm with dual swivel is perfect for users who need a solid support and fast position-changing capability, where a double swivel is required. The extended length is ideal for corner-mount locations.



8638DS21

Momentum Arm - Dual Swivel 5 1/2" Standard Length

- Height range 2.3" above the track to -6.1" below the track
- Tilt adjustment from +15° to -15° with positive tilt lockout option
- Soft-touch knob for tilt adjustment
- 360° swivel
- 21 3/4" ball bearing track



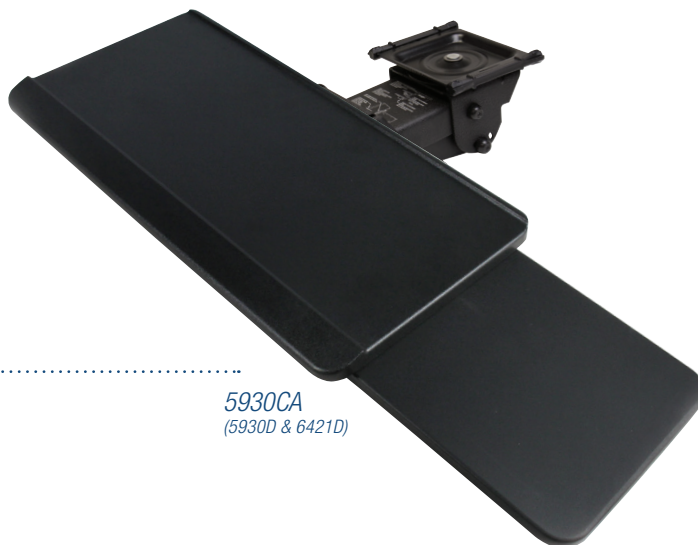
8428DS21

Momentum Arm - Dual Swivel 7 1/2" Extended Length

- Height range 4.9" above the track to -5.8" below the track
- Tilt adjustment from +15° to -15° with positive tilt lockout option
- Soft-touch knob for tilt adjustment
- 360° swivel
- 21 3/4" glide track

Classic Arms

Built to withstand the kind of heavy workouts associated with your work day. Arms fully articulate with both independent height and tilt adjustment, allowing users to adjust keyboard into a variety of comfortable positions.



5930CA
(5930D & 6421D)



6170D

Classic Lever Lock Arm

- Height range 0.1" above the track to -5.7" below the track
- Tilt adjustment latch on front of arm unlocks +15° to -10° tilt
- Lever lock adjustment arm
- 360° swivel at track
- 17" ball bearing track



5973D

Classic Lever Lock Arm

- Height range 0.5" above the track to -5.5" below the track
- Tilt adjustment latch on front of arm unlocks +15° to -10° tilt
- Lever lock adjustment arm
- 360° swivel at track
- 17" glide track



5930D

Classic Star Wheel Arm

- Height range 0.5" above the track to -5.3" below the track
- Tilt adjustment latch on front of arm unlocks +15° to -10° tilt
- Star wheel adjustment arm
- 360° swivel at track
- 17" glide track

Classic Arms with Tray Combo



5930CA
(5930D & 6421D)

- Classic Arm with Star Wheel (5930D see above)
- ABS Keyboard Tray with Slide-Through Mouse (6421D See page 9)
- Accommodates right- or left-hand mousing

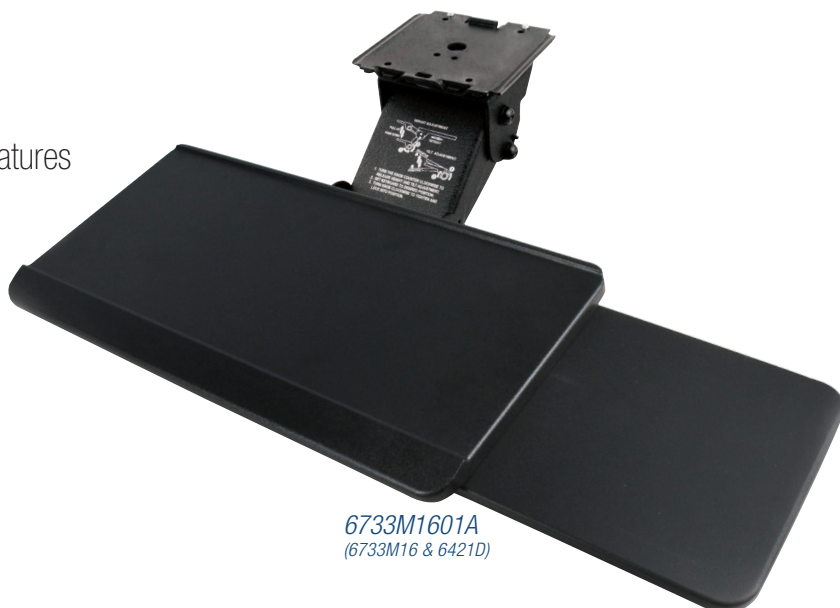


61701664
(6170D & 6421D)

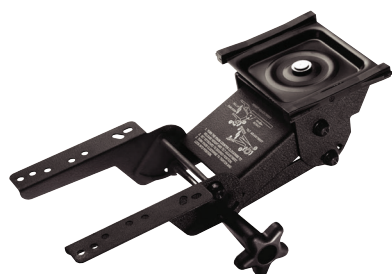
- Classic Arm with Lever Lock (6170D see above)
- ABS Keyboard Tray with Slide-Through Mouse (6421D See page 9)
- Accommodates right- or left-hand mousing

Value Arms

Entry level arms that provide most of the features available on our main family of arms at an economy price point.



6733M1601A
(6733M16 & 6421D)



5500D17

Encore Arm - Standard Length - 5 1/2"

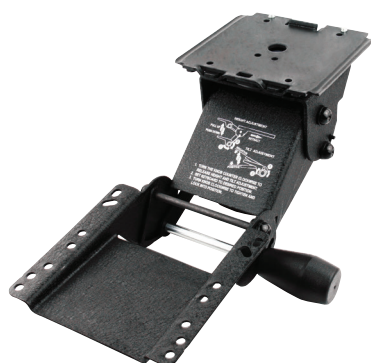
- Height range 0.8" above the track to -5.1" below the track
- Tilt adjustment latch on front of arm unlocks +16° to -17° tilt
- Star wheel arm to adjust both height and tilt simultaneously
- 360° swivel at track
- 17" glide track



KVAKP25-2T18

Value Adjustable Keyboard Arm - 6"

- Height range 1.8" above the track to -4.3" below the track
- 30° tilt range from +15° to -15°
- Soft-touch knob to adjust both height and tilt
- 360° swivel at track
- 18" track with EZ-Glide system
- Optional Positive Tilt Lockout option



6733M16 & 6733M21

Economy Arm - Standard Length - 5 1/2"

- Height range 1.0" above the track to -5.0" below the track
- 30° tilt range from +15° to -15°
- Soft-touch knob for simultaneous height and tilt adjustment
- Spring-assisted to help counterbalance keyboard and tray weight
- 360° swivel at track
- 6733M16 - 17" ball bearing track
- 6733M21 - 21 3/4" ball bearing track

Value Arms with Tray Combo

Sturdy, durable, and stable define the Value Keyboard System's group of workstation keyboard solutions. The Right Answer for straightaway and wide corner conditions.



5535D17
(5500D17 with clamp)

- Encore Arm -Standard Length - 5 1/2" (5500D17 See page 6)
- Integrated keyboard clamp
- 17" glide track



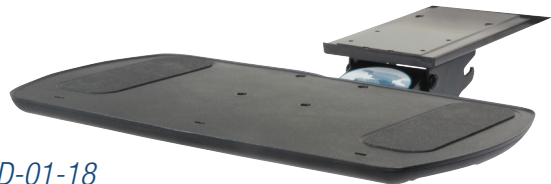
SD-1
(KV AKP35-2T18 & KV PZ)

- Value adjustable Keyboard Arm - 9 1/2" (KV AKP35-2T18)
- 18" track with EZ-Glide system
- Molded in black plastic resin with decorative textured finish (KV PZ)
- Arm & Tray only available as SD-1 combo



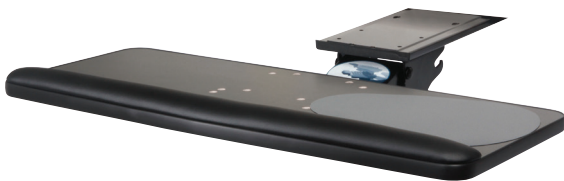
SD-00-18
(KV AKP25-2T18 & PF1824-MPS)

- Value adjustable Keyboard Arm - 6" (KV AKP25-2T18 See page 6)
- 18" track with EZ-Glide system
- Comfort Keyboard Tray with Mouse Over Platform & Palm Rest (PF1824-MPS See page 9)
- Swivel tilt mouse platform accommodates right- or left-hand mousing



SD-01-18
(KV AKP25-2T18 & KV PF)

- Value adjustable Keyboard Arm - 6" (KV AKP25-2T18 See page 6)
- Comfort Keyboard Tray (KV PF See page 10)
- 18" track with EZ-Glide system



SD-04-18
(KV AKP25-2T18 & PB2524)

- Value adjustable Keyboard Arm - 6" (KV AKP25-2T18 See page 6)
- 18" track with EZ-Glide system
- 25" MDF keyboard & mouse platform (PB2524 See page 10)
- Accommodates right- or left-hand mousing



6733M1601A (6733M16 & 6421D)
6733M2101A (6733M21 & 6421D)

- 6733M1601A - Economy Arm - Standard length with 17" ball bearing track (6733M16 See page 6)
- 6733M2101A - Economy Arm - Standard length with 21 3/4" ball bearing track (6733M21 See page 6)
- 6733M1601A & 6733M2101A - ABS Keyboard Tray with Slide-Through Mouse (6421D See page 9)
- Accommodates right- or left-hand mousing

Custom Component Guide

KV offers individual keyboard arms and platforms to allow customization for your unique application. For builders who make their own hardwood and veneer keyboard surfaces, choose a KV keyboard arm and create your unique keyboard platform and workstation design. In addition, individual keyboard platforms are offered to allow a quick and easy pick & place offering to mix the keyboard arm and platform to your requirements.

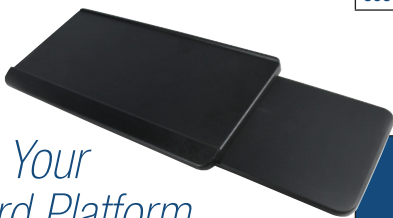
Which Arm is Right for You?



KV offers a comprehensive line of adjustable keyboard arms to fit a variety of needs for value as well as optimal ergonomic features and adjustments. This chart will help you identify key features to meet your requirements and select the right adjustable keyboard arm. All arms exceed ANSI/BIFMA standards. All arms are BAA compliant.

	Compact	Extended Reach	Lift-n-lock	Tilt Range	Height Range	Above the Track	Below the Track	Track Length
5500D17	•			+16° -17°	5.9"	0.9"	-5.1"	17"
KV AKP25-2T18	•			±15°	6.1"	1.8"	-4.3"	18"
AKP35-2T18		•		±15°	9.2"	2.8"	-6.4"	18"
6733M16	•			±15°	6.00"	1.0"	-5.0"	17"
6733M21	•			±15°	6.00"	1.0"	-5.0"	21 3/4"
5930D	•			+15° -10°	5.8"	0.5"	-5.3"	17"
5973D	•			+15° -10°	5.8"	0.5"	-5.3"	17"
6170D	•			+15° -10°	5.8"	0.1"	-5.7"	17"
KV AKP55-2T21		•		±15°	9.7"	3.00"	-6.7"	21"
8434D17	•		•	+10° -15°	8.4"	2.3"	-6.1"	17"
8434D21	•		•	+10° -15°	8.4"	2.3"	-6.1"	21 3/4"
8424D21		•	•	+10° -15°	10.8"	3.5"	-7.3"	21 3/4"
8478D21		•	•	+10° -15°	14.2"	8.3"	-5.9"	21 3/4"
8428DS21		•	•	±15°	10.7"	4.9"	-5.8"	21 3/4"
8638DS21	•		•	±15°	8.3"	2.3"	-6.0"	21 3/4"

Choose Your Keyboard Platform



Choose the keyboard platform that suits your individual application. Our platforms fit most KV keyboard arms. Select a platform from this chart and once the keyboard arm is installed, attach your platform and you're off to ergonomic comfort.

	Keyboard Only	Plastic	HDPE	Phenolic	MDF	Width	Depth	Thickness	Padded Palm Rest	Mouse Surface Style
KV PF	•	•				20.5"	10.5"	1.0"		No Mouse Deck
6501D*	•	•				21.0"	10.5"	0.8"		No Mouse Deck
PF1824/PZ1824	•	•				20.5"	10.5"	1.0"	•	No Mouse Deck
6421D*		•				21.0"	10.5"	1.5"	•	Slide-through
6731D79*				•		20.7"	11.00"	0.3"	•	Swivel only
6460A81*			•			20.7"	11.00"	0.5"	•	Height Adjustable Swivel & Tilt
PF1824-MPS						20.5"	10.5"	1.0"	•	Swivel & Tilt
PB2524					•	25.2"	10.5"	0.6"	•	Integral
6466D*			•			27.0"	11.0"	0.5"	•	Integral
KV PC2524				•		25.0"	10.1"	0.3"	•	Integral

*Not for use on KV AKP25-2T18 or KV AKP55-2T21

Standard Keyboard Trays with Mouse Support

Select the best design for your individual application. KV offers a broad range of options with a solution that will work for your specific task, or set of tasks.



PF1824-MPS



6460A81

HDPE Keyboard Tray with Height-Adjustable, Swivel Mouse Tray

- Made from 1/2" thick HDPE (High Density Polyethylene) with a textured finish
- Anti-skid strips on keyboard tray
- Plug-in gel-feel foam palm rest
- Height-adjustable mouse mechanism with mouse guard and cable manager
- 20.7" width
- Not for use on KV AKP25-2T18 or KV AKP55-2T21



6731D79

Phenolic Keyboard with Swivel Only Mouse Tray

- Adjustable and detachable swivel mouse tray for right- and left-hand use
- Built-in mouse guard with cable management
- Plug-in foam-gel wrist rest
- Attaches to most Knappe & Vogt Waterloo keyboard arms
- Anti-skid strips on keyboard tray
- Graphite grey helps hide fingerprints, marks and smudges
- 20.7" width
- Not for use on KV AKP25-2T18 or KV AKP55-2T21



PF1824-MPS

Comfort Keyboard Tray with Mouse Over Platform with Palm Rest

- Molded in 1" thick black plastic with decorative textured finish
- Removable independent Omni-directional tilting mouse support platform
- Anti-skid strips on keyboard tray
- Removable padded Palm Rest
- Mouse swivels above keyboard
- 20.5" width



6421D

ABS Keyboard Tray with Slide-Through Mouse Tray

- Mousing surface adjusts from side to side for right- and left-hand use
- Comes with anti-skid mat (not shown)
- Black
- 21" width
- Not for use on KV AKP25-2T18 or KV AKP55-2T21

Full-Width Keyboard Trays & Mouse Support



KV PC2524

Full-Width, Phenolic Keyboard & Mouse Platform with Palm Rest

- Made from 1/4" thick Phenolic
- One piece construction for Keyboard & Mouse
- Accommodates right- or left-hand mousing
- 25" width



6466D

HDPE Keyboard & Mouse Platform with Palm Rest

- Made from 1/2" thick HDPE (High Density Polyethylene) with a textured finish
- Plug-in gel-feel foam palm rest
- Accommodates right- or left-hand mousing
- 27" width
- Not for use on KV AKP25-2T18 or KV AKP55-2T21



PB2524

Full-Width, Melamine Keyboard & Mouse Platform with Palm Rest

- Made from 5/8" thick Melamine
- One piece construction for Keyboard & Mouse
- Accommodates right- or left-hand mousing
- 25" width

Standard Trays (No Mouse Support)



PF1824

Comfort Keyboard Tray with Palm Rest

- Made from 1" thick molded plastic
- Molded in black plastic resin with decorative textured finish
- Removable padded Palm Rest included
- Ideal for keyboard only application
- Anti-skid strips on keyboard tray
- 20.5" width



6501D

ABS Keyboard Tray

- Made from 3/4" thick molded plastic
- Black finish helps hide fingerprints, marks and smudges
- Reinforcing back plate for rigidity
- Anti-skid mat included (not shown)
- 100 lbs load rating
- 20.4" width
- Not for use on KV AKP25-2T18 or KV AKP55-2T21



KV PF

Comfort Keyboard Tray

- Made from 1" thick molded plastic
- Molded in black plastic resin with decorative textured finish
- Ideal for keyboard only applications
- Anti-skid strips on keyboard tray
- 20.5" width

Keyboard Tray Accessories

Mouse Supports

MPS

Swivel Tilt Mousing Surface Kit

- Simple attachment provides left- or right-mousing
- Omni-direction swivel mechanism with 360° rotation
- Tilting feature
- Built-in mouse fence around platform perimeter
- Fits Knappe & Vogt KV PF & PF1824



MP-1

Mouse Mat with Built-in Palm Rest

- Lycra covered mousing surface
- 9 1/2" x 7 1/4" mousing area with 6 1/2" x 1 3/4" deep cushioned palm rest
- Built-in mouse fence around platform perimeter of mat
- Fits Knappe & Vogt MPS mousing platform



OMN

Desk Mounted Swivel Only Mousing Surface

- 1/2" thick black HDPE mousing platform
- 9" diameter platform
- Mounting includes bracket for direct attachment to desk
- Mounting hardware included



KD-010

Swivel Only Mousing Surface Kit

- Stamped steel mousing platform
- 9" diameter platform
- Includes mounting spacer stand-off
- Black powder paint finish
- Fits KD-100 keyboard drawer



Palm Rests

6270D

Foam Palm Rest

- Black palm rest
- 19.5" width
- Use with 6421D and all 6501D and 4470D16 keyboard trays



6275B

Gel-Feel Palm Rest

- Black Gel-Feel foam palm rest
- Tree lock fasteners for easy installation
- Self-skinning molded material with gradual return
- 19" width
- Use with 6731D79 & 6460A81



1824WR

Palm Rest

- Vinyl covered foam filled construction
- Threaded inserts for attachment to tray
- 19" width
- Fits KV PF Keyboard Tray



KPM-383

Gel Palm Rest

- Plastic attachment bracket with Lycra covered gel palm rest
- 22.8" width
- Spans total width of keyboard drawer
- Attaches to KD-1000 Keyboard Tray



Keyboard Drawers

An economical storage solution for your keyboard and mousing applications. Just as every user is different, choosing the right keyboard drawer can maximize a user's productivity for a healthy work environment.

KD-55 *Light Duty Economy Drawer with Palm Rest Storage*



KD-75 *Light Duty with Front Storage*



- KD-55 - Injection molded keyboard tray 20.0" W x 10.0" D
- KD-75 - Molded plastic 20.5" W x 16.0" D
- Precision Ball Bearing Slides with detent feature
- Adjustable drop height feature provided on slide brackets
- Seven height adjustments for ergonomic adjustment of drawer from 2.3" to 3.6"
- 20 lbs load rating
- KD-75 - Not height adjustable

5700 BLK 18 & 5700SP BLK 18
Adjustable Palm Rest



5710 BLK 18 & 5710SP BLK 18
Adjustable Palm Rest & Sliding Mouse Tray



- Steel keyboard tray 21.8" W x 18.0" D
- Height-adjustable palm rest for optimal typing comfort
- Precision Ball Bearing Slides with detent feature
- Adjustable drop height feature provided on slide brackets
- Large keyboard drawer area supports all keyboard size
- 75 lbs load rating

KD-1000 *Wide Keyboard Drawer with Mousing Surface & Palm Rest*



KD-1020 *Wide Keyboard Drawer with Mousing Surface, Palm Rest & Storage*



- Wide steel keyboard tray 25.8" W x 10.0" D (inside dimension)
- Precision Ball Bearing Slides with detent feature
- Adjustable drop height feature provided on slide brackets
- KD-1020 - Injection molded 25.0"W x 5.0"D accessory tray with extended slides
- Lycra covered Gel Palm rest
- 75 lbs load rating

KD-100 *Keyboard Drawer with Palm Rest*



KD-110 *Keyboard Drawer with Palm Rest and Mousing Surface*



- Wide steel keyboard tray 20.0" W x 10.0" D (inside dimension)
- Precision Ball Bearing Slides with detent feature
- Adjustable drop height feature on slide brackets
- Height adjustments of 2.3" to 3.6" for ergonomic placement of drawer
- KD-110 & KD-120 - 8.0" Diameter swivel only mousing surface with mouse fence and cable manager
- KD-120 Injection molded 19.5"W x 5.0"D accessory tray with extended slides
- 75 lbs load rating

KD-120
Keyboard Drawer with Palm Rest, Mousing Surface & Storage



Keyboard Drawers



C400

Hide & Slide Tray - Palm Rest Storage & Mouse Tray

- Tray 21.9" W x 10.6" D accommodates standard and ergonomic shaped keyboards
- Two low friction 16.0" ball bearing slides for installation and storage below work surface
- Pull out mouse tray (mountable left or right)
- Palm rest / pencil and pen compartment
- 100 lbs load rating



4470D16

Sliding Keyboard Supports

- Plastic molded constructed keyboard
- Design accommodates most keyboards
- Adjustable height, ball bearing slides (16" nominal length)
- Height adjustments of 2.9" to 3.9" for ergonomic placement of drawer under work surface
- 6421D keyboard tray with anti-skip mat and black finish

Dual Arms

- Has a 16.0" and 19.0" height range adjustment, designed for sitting and standing while typing
- Knob tilt adjustment from +15° / -15°
- Easy-mount keyhole slots on mounting brackets
- Compact brake mechanism, accommodates heavy loads
- Counterbalance is field adjustable by installers for optimized performance



Duet 7090 Series - Short Neck Arm

Model	Height Range Above/Below track		Length	Width
7090D2300	+9.5"	-6.5"	19.7"	23.0"
7090D2700	+9.5"	-6.5"	19.7"	27.0"
7090D3100	+9.5"	-6.5"	19.7"	31.0"
7090D3900	+9.5"	-6.5"	19.7"	39.0"

Duet 7090 Series - Storable Arm

Model	Height Range Above/Below track		Length	Width
7090D2700B23	+9.1"	-6.9"	32.7"	27.6"

(Storable on 23" ball bearing tracks)

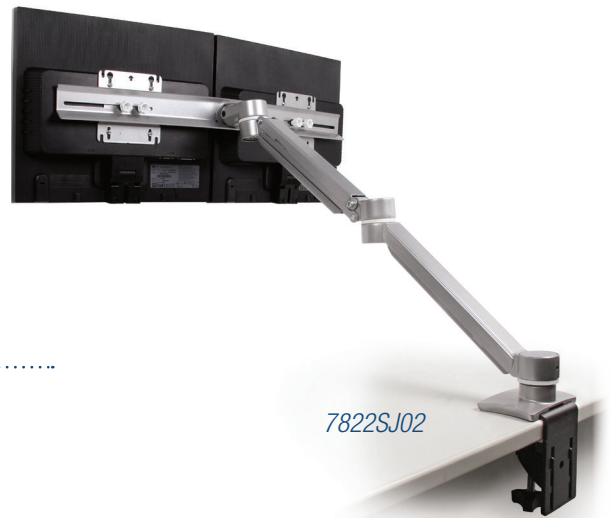
Duet 7080 Series - Long Neck Arm

Model	Height Range Above/Below track		Length	Width
7080D2300	+12.5"	-6.5"	21.1"	23.0"
7080D2700	+12.5"	-6.5"	21.1"	27.0"



Monitor Arms

Free up your desk space with a monitor arm that is made for the flat panel display. Monitor arms can adapt to a wide variety of configurations and applications to help quickly find the ultimate ergonomic position.



Single Screen Monitor Arms



HPR-3B

Hopper Flat Panel Monitor Mount

- Spring lift assist
- Single adjustable arm
- 180° swivel at monitor
- 360° swivel at base
- Includes clamp & grommet mount
- Available in Black only



7810S

Concerto Monitor Arm

- Single screen, single extension
- Patented Quick Connect allows fast, simple assembly
- Desk clamp and grommet mount hardware included
- Arm swivels 360° around the base
- 20 lbs load capacity
- Fits both 75mm and 100mm hole patterns to comply with VESA standards
- Available in Silver (7810S) & Black (7810B)



Xtend Monitor Arms

- Single screen, double extension with one height-adjustable segment
- Provides 26" of reach with 13" of usable height adjustment
- Patented Quick Connect allows fast, simple assembly
- Counterbalanced spring technology allows for a 2 to 14 lbs load
- Contains both 75mm and 100mm hole patterns to comply with VESA standards
- Pole-less monitor arm folds into a 4-3/8" area
- Clamping range of 0" to 2-5/8" (clamp)
- Arm swivels 360° around the base
- Available in Silver (7818SJ02) & Black (7818BJ02)



7818SJ02



7818BJ02

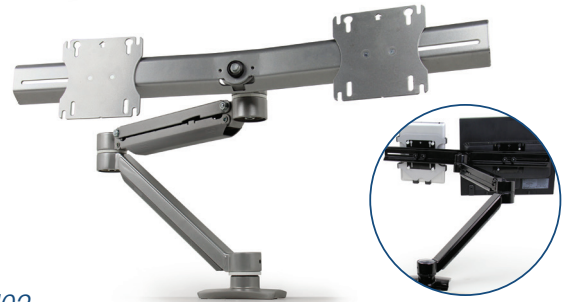
Dual Screen Monitor Arms



7823SJ05

Xtend Dual Monitor Arms

- Dual screen, dual extension with one height-adjustable segment
- Counterbalanced spring technology supports two monitors for a 2 to 14 lbs load
- Contains both 75mm and 100mm hole patterns to comply with VESA standards
- Pole-less monitor arm folds into a 4-3/8" area
- Clamping range of 0" to 2-5/8" (clamp)
- Arm swivels 360° around the base
- Available in Silver (7823SJ05) & Black (7823BJ05)



7822SJ02

Xtend Dual Monitor Arms with Cross Bar

- Dual screen, dual extension cross bar with one height-adjustable segment
- Counterbalanced spring technology supports two monitors for a 2 to 20 lbs load
- Provides 26" of reach with 13" of usable height adjustment
- Dual Crossbar holds monitors up to 22" horizontal width each
- Pole-less monitor arm folds into a 4-3/8" area
- Clamping range of 0" to 2-5/8" (clamp)
- Arm swivels 360° around the base
- Available in Silver (7822SJ02) & Black (7822BJ02)

Monitor Arm Accessories

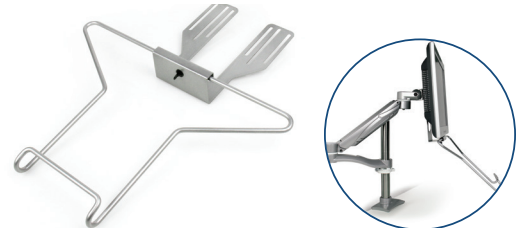
Minimize neck, back and shoulder stress with these ergonomic monitor accessories.



7801TDS

Laptop Support with Document Holder

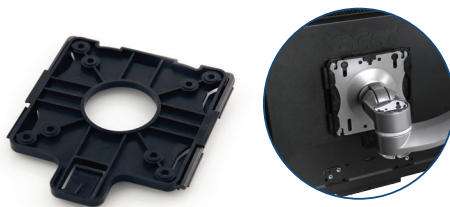
- Holds your laptop in place and off the work surface
- Fits most laptop brands
- Use with Xtend Dual monitor arms
- Available in Silver



7902S

Concerto Accessory, Document Holder

- Supports various document widths
- Fits both VESA 75mm and 100mm hole pattern
- Use with any Concerto or Xtend monitor arm
- Available in Silver only



7903K

Quick Connect Adapter Bracket

- Easily attach bracket to the back of a monitor then "snap" it into the monitor head
- To remove the monitor simply press & release the tab
- Fits both VESA 75mm and 100mm hole patterns
- Use with Xtend monitor arm



7803MS

7803M iPad® Tablet Holder

- Supports some iPad® models
- Mounts directly to a standard VESA 100mm x 100mm hole pattern
- Width 7.7" x 7.8" height
- Use with Xtend Dual monitor arms
- Available in Silver only

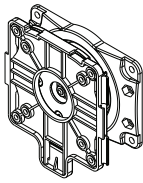
Presto Monitor Trim-Lift

- In-desk pop-up monitor mechanism
- Ideal for any size monitor up to 14 lbs
- Six VESA mounting positions will accept 75mm x 75mm and 100mm x 100mm screen mounting patterns
- Optional universal swivel adaptor providing screen tilt, swivel and rotation (part number 9805C)
- Five 1 lb weights are provided to counterbalance from 9 to 14 lbs



9810D2600

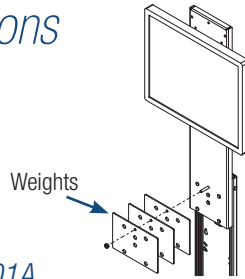
Presto Monitor Trim-Lift Options



9805C

Optional Monitor Mount: Universal Swivel Adaptor

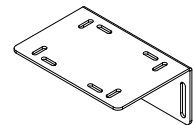
- Optional universal swivel adaptor provides multiple angle options
- Provides 15° of motion in all directions



9801A

Optional Counter Balance Weights

- 3 x 2 lbs optional counterweight kit
- Simple adjustments to weights provide a smooth counterbalance control when opening & closing



9801B

Optional "L" Bracket

- Optional top cover "L" bracket with slotted holes for adjustment
- Allows for easy installation and adjustments of table cover

CPU Holders

A CPU Holder is a great way to free up your desk space. It mounts easily to the underside of the work surface and keeps the CPU cleaner by getting it off the floor.



7361D

Lockable CPU Holder

- Plastic side clamp with bumpers
- Tamper-proof locking nut
- Adjustable width (3.5" to 9.3") and height (14.5" to 22.5")
- 17" glide track
- 360° swivel



7351D

Storable CPU Holder

- Plastic side clamp with bumpers
- Adjustable width (3.5" to 9.3") and height (14.5" to 22.5")
- 17" glide track
- 360° swivel



7301D

Fixed Mount CPU Holder

- Plastic side clamp with bumpers
- Adjustable width (3.5" to 9.3") and height (14.5" to 22.5")
- Non-swivel, non-storable

CPU Holders



7325D17

Storable CPU Holder - Double Strap

- CPU retracts on a 17" glide and swivels to allow full accessibility and easy storage
- Accommodates CPU's weighing up to 30 lbs and measuring 64" in perimeter
- Soft touch Anti-slip pad



7322D17

Storable CPU Holder - Single Strap

- CPU retracts on a 17" glide and swivels to allow full accessibility and easy storage
- Accommodates CPU's weighing up to 30 lbs and measuring 64" in perimeter
- Soft touch Anti-slip pad



C730

Fixed Mount Economy CPU Holder

- Adjustable, vertical or horizontal position
- Adjustable width (5.5" to 9.8") and height (15.5" to 20.0") vertical configuration
- Adjustable width (13.8" to 18.8") and height (7.3" to 11.3") horizontal configuration
- Non-swivel, non-storable

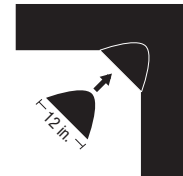
Specialty Products & Accessories

Corner Maker

- Converts 90° surfaces to corner work stations
- Adjustable design fits 1" to 2.25" thick surfaces
- 12" wide for minimum setback from work surface
- Fits all KV Keyboard systems & Adjustable Keyboard Arms
- Sturdy steel construction with powder coated textured black finish
- Simple installation



KV 179ACD-B



Ergo Accessories

8400DS

Dual Swivel Adaptor

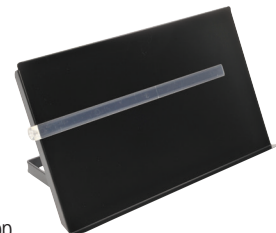
- The adaptor will fit all Knap & Vogt keyboard arms
- Tool-less adjustment tilt and swivel friction is factory set, which makes it easy for adjustments in the field
- The swivel adaptor provides 35° of swivel rotation from side to side (70° in total) & 7° (14° in total) of lateral tilt
- 0.9" high



C200

Document Holder

- Magnetic line guide
- Black with opaque line guide
- Steel easel base sits on desktop
- Extra-wide and extra-deep platform
- Versatile angle adjustment with locking lever



C125

Laptop Support

- Five adjustment angles 4°, 14°, 23°, 33° and 43°
- Four port USB Hub capability powered by laptop
- Fully compliant with universal serial bus specification revision 2.0 (Data rate 1.5/12/480 Mbps)
- Compatible with Windows 7 and 98, ME, 2000, XP, VISTA, MAC OS 8x, 9x and 10 Operating Systems



C800

Foot Rest

- Folding support legs provide tilt angles of 6°, 12°, 16° and 25°
- Anti-fatigue rubber surface on platform
- Platform surface 15.7"W x 10.0"D
- Black with grey accents





2700 Oak Industrial Dr. NE
Grand Rapids, MI 49505-6026 USA
Tel: 1.800.253.1561 | 616.459.3311
Fax: 877.636.3290
www.kv.com