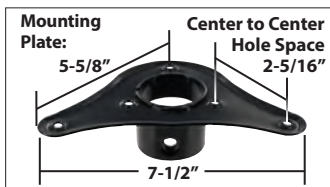


14 Series

Material: Steel

Finishes: High Gloss Black, Brushed Silver, Polished Chrome & Matte Nickel

- 28" High
- Height Adjustment: 1-1/4"
- Each set comes with 4 legs & 4 steel mounting plates (Unassembled).
- The thickness of the table top must be at least 1"
- Use #10 Panhead wood screws
- Leveler: Black ABS



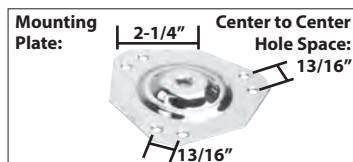
Part #	Finish
14MB	High Gloss Black
14BS	Brushed Silver
14PC	Polished Chrome
14MN	Matte Nickel

TLC8 Series

Material: Steel

Finishes: Black, Chrome & Matte Nickel

- 28" High
- Height adjustment: + 1-7/16"
- Each set comes with 4 legs & 4 steel mounting plates (Unassembled).
- The thickness of the table top must be at least 1".
- Use #10 Panhead wood screws
- Leveler: Black ABS



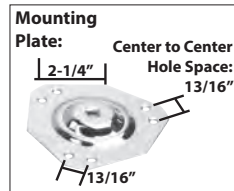
Part #	Finish
TLC8-2002-BK	Black
TLC8-2002-CHR	Chrome
TLC8-2002-MN	Matte Nickel

TL4 & TL6 Series

Material: Steel

Finishes: Black, Chrome & Matte Nickel

- Available in 2 heights: 6" & 16"
- Height adjustment: + 1-7/16"
- Each set comes with 4 legs & 4 steel mounting plates (Unassembled).
- The thickness of the table top must be at least 1"
- Use #10 Panhead wood screws
- Leveler: Black ABS



TL4 Series - 6"



Part #	Finish
TL4-2002-BK	Black
TL4-2002-CHR	Chrome
TL4-2002-MN	Matte Nickel

TL6 Series - 16"



Part #	Finish
TL6-2002-BK	Black
TL6-2002-CHR	Chrome
TL6-2002-MN	Matte Nickel

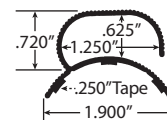
Wire Management for Round Table Legs



Material: Black PVC

5 Ft. lengths with Adhesive Back

Fits 2-3/8" Table Leg



Part #
CWM-1575-BK

Folding Table Legs - 2" Diameter

Material: Steel & Aluminum

- 27-3/4" high x 2" diameter
- Single button release foldable leg
- 220 lb. capacity per leg
- Sold in sets of 4
- Supplied with levelers
- adjustable to 1-1/8"

Weight: 8 lbs. per set

Top Plate: 5-1/8" x 3-5/8"

Thickness: 1/4"

8 Countersunk holes

Leveler: Black ABS

Mounting hardware included



Part #	Finish
FTL-AL	Ribbed Aluminum
FTL-MB	Matte Black
FTL-PC	Polished Chrome

Finishes:


Ribbed
Aluminum



Matte
Black



Polished
Chrome



Cast Aluminum Furniture Legs with Rubber Foot Bumpers

Finishes: Satin Chrome (SC), Brite Chrome (CHR)

WGL-300-SC
WGL-310-CHR

Overall Height: 14-3/4"

Weight: 1.80 lbs. ea.

Top Plate: 2-7/8" x 3-7/8"

Thickness: 3/8"

4 Countersunk holes

Base of Foot:

7/8" x 5/8"

Foot has a black rubber bumper


WGL-220-CHR

Overall Height: 15-1/4"

Weight: 2.25 lbs. ea.

Top Plate: 3-1/16" sq.

Thickness: 1/4"

3 Countersunk holes

Base of Foot:

1-1/2" dia.

Foot has a black rubber bumper


WGL-330-SC
WGL-320-CHR

Overall Height: 27-1/4"

Weight: 3.95 lbs. ea.

Top Plate: 3-1/2" x 4-1/2"

Thickness: 1/2"

5 Countersunk holes

Base of Foot:

1-1/8" x 7/8" x 7/8"

Foot has a black rubber bumper


WGL-260-SC

Overall Height: 29-1/2"

Weight: 4.70 lbs. ea.

Top Plate: 3-3/4" sq.

Thickness: 1/2"

4 Countersunk holes

Base of Foot:

13/16" x 3/8"

Foot has a black rubber bumper



There are many health benefits to having a functional workspace. A few advantages of having the correct sitting or standing position while working are improved focus, circulation, breathing, and back pain relief. Our Table Lift Legs contribute to these benefits and are a great option for a flexible workspace.



Manual Table Mechanisms

The Manual

*Colors Available: Black, Gray, White



- Newly engineered gearbox moves at 8mm per revolution
- Removable crank for additional comfort and security, ensuring unwanted height modification

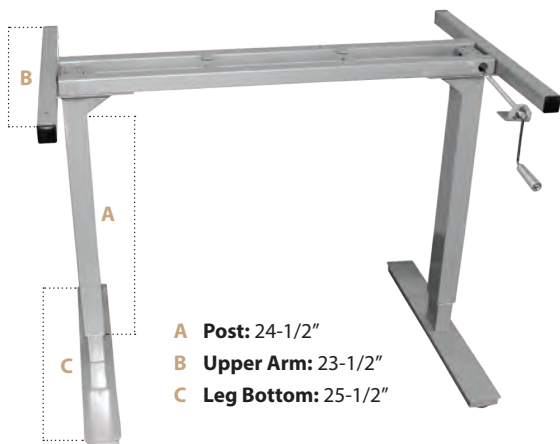
Weight Capacity: 320 lbs.

Height Range: 29-9/16" to 46-1/4"

Width Range: 43-5/16" to 63"



TLL-MAN-*



A 1" thick top or thicker is suggested

Maximum Tabletop Size is 36"Deep x 72"Length

NOTE: IT IS IMPORTANT TO CENTER THE TABLETOP TO ENSURE PROPER BALANCE

The Plus

*Colors Available: Black, White



- Retrofit an existing desk without making any holes
- Very mobile - no wires!
- Gas piston technology with lever
- Easy to operate with 15 height adjustments

Weight Capacity: 33 lbs.

Height Range: 5-7/8" to 19-11/16"

Minimum Desk Depth: 24"



TLL-PLUS-*



Ships UPS

All Hardware Included In Kit



There are many health benefits to having a functional workspace. A few advantages of having the correct sitting or standing position while working are improved focus, circulation, breathing, and back pain relief. Our Table Lift Legs contribute to these benefits and are a great option for a flexible workspace.



Electric Table Mechanisms



The Essentials

*Colors Available: Black, Gray, White



- 1 Motor electrical table with drive shaft between both legs, ensuring smooth operation
- Very quiet motor with sensors to stop action if table exceeds weight on one side; resets once weight is centered again
- Up-Down switch

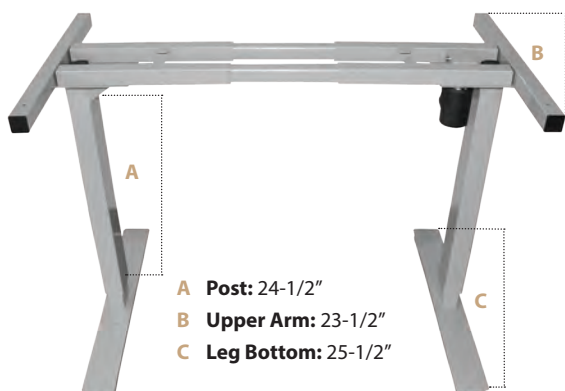
Weight Capacity: 380 lbs.

Height Range: 29-9/16" to 46-1/4"

Width Range: 43-5/16" to 63"



TLL-ESS-*



A 1" thick top or thicker is suggested

Maximum Tabletop Size is 36"Deep x 72"Length

NOTE: IT IS IMPORTANT TO CENTER THE TABLETOP TO ENSURE PROPER BALANCE

The Activ

*Colors Available: Black, Gray, White



- 1 Motor electrical table with drive shaft between both legs, ensuring smooth operation
- Very quiet motor with sensors to stop action if table exceeds weight on one side; resets once weight is centered again
- An LED switch with 4 preset heights allows 4 different users to set a height to their preferred comfort level with the touch of a button
- Sturdy steel frame comes partially pre-assembled for an easy overall assembly

Weight Capacity: 209 lbs.

Height Range: 26-3/4" to 46"

Width Range: 41-1/4" to 61-5/8"



TLL-ACTIV-*



Stainless Steel Bolt Down Table Bases

Material: Steel &
Stainless Steel

Finish: Brushed
Stainless Steel

- Available in two heights:
28-3/8" for table height ***(-T)**
42-1/2" for bar height ***(-B)**
- Column: 3" diameter steel
- Plate: 12" x 12" spider style
- Packed 1 base per carton



Part #	Base Diameter	Max Top Size
TB-B17-SS-*	17"	24" x 24"
TB-B22-SS-*	22"	36" x 36"



Stainless Steel Square Table Bases

Material: Steel &
Stainless Steel

Finish: Brushed
Stainless Steel

- Available in two heights:
28-3/8" for table height ***(-T)**
42-1/2" for bar height ***(-B)**
- Column: 3" diameter steel
- Plate: 12" x 12" spider style
- Packed 1 base per carton



Part #	Base Size	Max Top Size
TB-SQ17-SS-*	17" x 17"	24" x 24"
TB-SQ22-SS-*	22" x 22"	36" x 36"

Steel Table Bases

Material: Chrome Plated Steel
with Adjustable Levelers

- Column: 2-1/4", 16 gauge
- Leg Spread: 32"
- Plate: 11" x 11", 12 gauge
- Packed Per Carton: 1 Base
- Weight Per Carton: 15 lbs. 6 oz.



Part #	Max Top Size	Height
KD-5012	48"	28-1/2"

X-Style Cast Iron Table Bases

Material: Cast Iron & Steel
Finish: Matte Black Wrinkle

- Available in two heights:
28" for table height ***(-T)**
40" for bar height ***(-B)**
- Column: 3" diameter steel
- Plate: 9" x 9" spider style
- Packed 1 base per carton
- TB-X522-
single leg only
as pictured



TB-X522

Part #	Leg Spread	Max Top Size
+ TB-X522-*	5" x 22"	+ 36" x 96"
TB-X2230-*	22" x 30"	30" x 42"
TB-X2222-*	22" x 22"	30" x 30"
TB-X3030-*	30" x 30"	42" x 42"

+ *Note: Table top size reflects mounting with 3 bases or with one side mounted to the wall*

Round Cast Iron Table Bases

Material: Cast Iron & Steel
Finish: Matte Black Wrinkle

- Available in two heights:
29" for table height ***(-T)**
41" for bar height ***(-B)**
- Column: 3" diameter steel
- Plate: 9" x 9" spider style
- Packed 1 base per carton
- Bar height available with foot ring option



FOOTRING



Part #	Base Diameter	Max Top Size	Foot Ring
TB-RD22-*	22"	36" x 36"	No
TB-RDF22-*	22"	36" x 36"	Yes

Finishes: Brite Chrome (CHR), Satin Chrome (SC), Pewter (PEW), Brushed Silver (SIL)

WGL-3019-CHR

Material: Zinc
Overall Height: 7"
Weight: 1.6 lbs. ea.
Top measures: 3" dia.
5/16" x 1" Threaded Stem
Base of Foot: 1" dia.
Foot has a black plastic bumper



WGL-3112-SIL

Material: Aluminum
Overall Height: 5-1/2"
Weight: 0.6 lbs. ea.
Top measures: 1-1/2" dia.
5/16" x 1" Threaded Stem
Base of Foot: 1-7/16" dia.
Foot has a black plastic bumper



WGL-938-CHR WGL-938-PEW

Material: Zinc
Overall Height: 5-1/4"
Weight: 0.6 lbs. ea.
Top measures: 1-1/2" dia.
5/16" x 1" Threaded Stem
Base of Foot: 2-1/8" dia.
Foot has a black plastic bumper



WGL-8244-SC

Material: Aluminum
Overall Height: 6"
Weight: 0.9 lbs. ea.
Top measures: 1-3/8" dia.
5/16" x 1" Threaded Stem
Base of Foot: 1-3/8" dia.
Foot has a black plastic bumper



WGL-8329-CHR

Material: Zinc
Overall Height: 3-1/2"
Weight: 0.6 lbs. ea.
Top measures: 2-3/8" dia.
5/16" x 1" Threaded Stem
Base of Foot: 1-3/16" dia.
Foot has a black plastic bumper



WGL-988CHR

Material: Stainless Steel
Overall Height: 4"
Weight: 1.27 lbs. ea.
Top measures: 1-3/4" dia.
5/16" x 1" Threaded Stem
Base of Foot: 1-5/8" dia.
Foot has a white felt pad

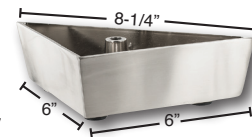


Metal Sofa Legs w/Plate

Finish: Brite Chrome (CHR)

WGL-376-CHR

Material: Zinc
Overall Height: 2"
Weight: 1.2 lbs. ea.
Top measures: 6" x 6" x 8-1/4"
1 Countersunk hole @ 11/32" dia.
Foot has a 3 black plastic bumpers

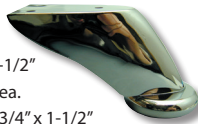


Metal Furniture Legs with Plate

Finishes: Brite Chrome (CHR), Satin Chrome (SC/SAT), Pewter (PEW), Matte Nickel (MN)

WGL-919CHR WGL-919SC

Material: Zinc
Overall Height: 2-1/2"
Weight: 0.47 lbs. ea.
Top measures: 2-3/4" x 1-1/2"
Thickness: 1-1/16"
3 Screw holes
Base of Foot: 1-7/8" dia.
Foot has a clear rubber bumper



WGL-919A-MN

Material: Zinc
Overall Height: 3-5/8"
Weight: 0.67 lbs. ea.
Top measures: 1-3/4" x 2-3/4"
Thickness: 3/32"
3 Screw holes & 1 bolt hole
Base of Foot: 1-7/8" dia.
Foot has a clear rubber bumper



WGL-981SC

Material: Zinc
Overall Height: 3"
Weight: 0.42 lbs. ea.
Top measures: 2-3/8" x 2-5/8"
Thickness: 3/32"
5 Screw holes
Base of Foot: 1-9/16" dia.
Foot has a black plastic bumper



WGL-8343-CHR

Material: Zinc
Overall Height: 3-3/4"
Weight: 0.6 lbs. ea.
Top measures: 3-3/16" x 1-7/8"
Thickness: 9/32"
4 Countersunk holes
Base of Foot: 1-1/4" x 1-3/16"
Foot has a black plastic bumper



WGL-634CHR

Material: Zinc
Overall Height: 4"
Weight: 0.4 lbs. ea.
Top measures: 3-3/16" x 2-3/16"
Thickness: 9/64"
4 Screw holes
Base of Foot: 2-1/16" dia.
Foot has a clear rubber bumper



WGL-804SC

Material: Zinc
Overall Height: 4"
Weight: 0.71 lbs. ea.
Top measures: 2-1/2" x 2-7/16"
Thickness: 3/16"
4 Screw holes
Base of Foot: 2-3/8" dia.
Foot has a clear rubber bumper



WGL-933CHR

Material: Zinc
Overall Height: 4"
Weight: 0.57 lbs. ea.
Top measures: 2-13/16" dia.
Thickness: 1/8"
4 Screw holes
Base of Foot: 2-3/8" dia.
Foot has a clear rubber bumper



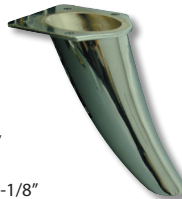
WGL-983-PEW

Material: Zinc
Overall Height: 4-1/2"
Weight: 0.4 lbs. ea.
Top measures: 2-1/2"
Thickness: 9/64"
4 Screw holes
Base of Foot: 1-9/16" dia.
Foot has a black plastic bumper



WGL-814CHR

Material: Zinc
Overall Height: 4"
Weight: 0.6 lbs. ea.
Top measures: 3" x 2-3/4"
Thickness: 9/64"
4 Screw holes
Base of Foot: 1" x 1-1/8"
Foot has a black plastic bumper



WGL-8110-SAT

Material: Aluminum
Overall Height: 4"
Weight: 0.6 lbs. ea.
Top measures: 3-1/8" sq.
Thickness: 5/16"
5 Countersunk holes
Base of Foot: 1-1/2" sq.
Foot has a black plastic bumper



Finishes: Satin Chrome (SC), Brite Chrome (CHR), Satin Nickel (SN), Brushed Stainless Steel (SS), Silver (SIL), Mated Brass (MB)

WGL-804A-CHR

Material: Zinc
Overall Height: 5"
Weight: 0.8 lbs. ea.
Top Plate: 2-5/8" x 3-1/2"
Thickness: 11/64"
4 Screw holes
Base of Foot: 2-3/8" dia.
Foot has a clear rubber bumper



WGL-635SC

Material: Zinc
Overall Height: 5"
Weight: 1.2 lbs. ea.
Top Plate: 3-7/8" x 3"
Thickness: 11/64"
3 Screw holes
Base of Foot: 2-1/2" dia.
Foot has a black rubber bumper



WGL-929CHR

Material: Zinc
Overall Height: 4-5/8"
Weight: 0.5 lbs. ea.
Top Plate: 2-1/4" dia.
Thickness: 11/32"
4 Screw holes
Base of Foot: 2-1/4" dia.
Foot has a black rubber bumper



WGL-926CHR

Material: Zinc
Overall Height: 5"
Weight: 0.88 lbs. ea.
Top Plate: 2-5/8" x 3-1/2"
Thickness: 11/64"
4 Screw holes
Base of Foot: 1-15/16" dia.
Foot has a clear rubber bumper



WGL-640CHR

Material: Zinc
Overall Height: 5"
Weight: 0.6 lbs. ea.
Top Plate: 2-3/8" x 2-5/8"
Thickness: 9/64"
5 Screw holes
Base of Foot: 2-1/8" dia.
Foot has a clear rubber bumper



WGL-8113-CHR

Material: Stainless Steel
Overall Height: 5"
Weight: 0.75 lbs. ea.
Top Plate: 4-7/8" x 4-7/8" x 5-5/8"
Thickness: 5/64"
3 Countersunk holes
Leg measures 1" sq.
Foot has a gray plastic bumper



WGL-8112-CHR

Material: Stainless Steel
Overall Height: 6"
Weight: 1.0 lbs. ea.
Top Plate: 3-5/16" x 3-5/16" x 4-5/8"
Thickness: 1/4"
5 Countersunk holes
Leg measures 1-1/2" sq.
Foot has a black plastic bumper



WGL-8112-SN

Material: Stainless Steel
Overall Height: 6-3/16"
Weight: 0.625 lbs. ea.
Top Plate: 3-9/16" x 3-9/16" x 5"
Thickness: 3/32"
4 Countersunk holes
Leg measures 1-1/2" sq.
Foot has a black plastic bumper



WGL-8111-SS

Material: Stainless Steel
Overall Height: 6-1/8"
Weight: 0.56 lbs. ea.
Top Plate: 3-1/4" x 1-1/2"
Thickness: 1/8"
4 Countersunk holes
Leg measures 1-1/2" sq.
Foot has a black plastic bumper



WGL-1009-MB

Material: Iron
Overall Height: 6"
Weight: 1.0 lbs. ea.
Top Plate: 5-1/8" x 5-1/8" x 1-1/2"
Thickness: 1/8"
4 Screw holes
Leg measures 5-1/8" at the top and narrows down to 3/4"
Foot has a clear rubber bumper



ABS Plastic



Finishes: Matte Chrome, Matte Nickel

2-1/4" x 2-1/4" x 2-1/2"



Part #	Finish
O-755-MV2	Matte Chrome
O-755-MV7	Matte Nickel

Recycled Polypropylene

Finish: Brown
Thread Size 5/16-18 x 1" Stem

R70-300

3" High x 2" Round
Tapers to 1-3/4"



High Density Polyethylene

Finish: Brown
Thread Size 5/16-18 x 1" Stem

R70-400

4" High x 2" Round
Tapers to 1-1/2"



Cast Aluminum Furniture Legs with Rubber Foot Bumpers

CLICK PART# TO VIEW PRODUCT

Finishes: Satin Chrome (SC), Brite Chrome (CHR)



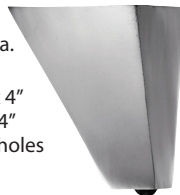
WGL-124-SC **WGL-125-CHR**

Overall Height: 4-1/2"
Weight: 0.35 lbs. ea.
Top Plate:
2-1/4" x 2-1/4" x 3"
Thickness: 7/32"
3 Countersunk holes
Foot has a black
rubber bumper



WGL-280-SC **WGL-290-CHR**

Overall Height: 4"
Weight: 0.45 lbs. ea.
Top Plate:
2-3/4" x 2-3/4" x 4"
Thickness: 15/64"
3 Countersunk holes
Base of Foot:
1" x 1" x 1-3/8"
Foot has a black rubber bumper



WGL-020-SC **WGL-010-CHR**

Overall Height: 4"
Weight: 0.65 lbs. ea.
Top Plate: 2-15/16" sq.
Thickness: 1/4"
4 Countersunk holes
Foot has a black
rubber bumper



WGL-060-SC **WGL-050-CHR**

Overall Height: 4"
Weight: 0.75 lbs. ea.
Top Plate: 2" sq.
Thickness: 11/32"
3 Countersunk holes
Base of Foot: 1-1/8"
Foot has a black rubber bumper



WGL-040-SC **WGL-030-CHR**

Overall Height: 5-1/4"
Weight: 0.85 lbs. ea.
Top Plate: 2-5/8" sq.
Thickness: 3/8"
3 Countersunk
holes
Base of Foot:
1-3/4"
Foot has a black rubber bumper



WGL-160-SC **WGL-150-CHR**

Overall Height: 5-1/2"
Weight: 1.10 lbs. ea.
Top Plate: 3-1/8" sq.
Thickness: 1/4"
4 Countersunk holes
Base of Foot:
1-5/8" sq.
Foot has a black
rubber bumper



WGL-130-CHR

Overall Height: 6"
Weight: 0.80 lbs. ea.
Top Plate: 2" sq.
Thickness: 3/8"
3 Countersunk holes
Base of Foot:
1" x 1-1/2"
Foot has a black
rubber bumper



WGL-070-SC

Overall Height: 7-1/4"
Weight: 0.90 lbs. ea.
Top Plate: 2-3/8" sq.
Thickness: 3/8"
3 Countersunk holes
Foot has a black
rubber bumper



WGL-110-SC **WGL-120-CHR**

Overall Height: 8"
Weight: 0.75 lbs. ea.
Top Plate:
2-3/4" x 2-3/4" x 4"
Thickness: 11/32"
3 Countersunk holes
Base of Foot:
3/8" x 3/8" x 3/8"
Foot has a black
rubber bumper



WGL-100-SC **WGL-090-CHR**

Overall Height: 9-3/8"
Weight: 1.40 lbs. ea.
Top Plate: 2-1/4" sq.
Thickness: 3/8"
3 Countersunk holes
Base of Foot:
1" x 2-1/4"
Foot has a black
rubber bumper



SEE PAGES L-64~67 FOR KITCHEN ISLAND LEGS

OUTWATER PLASTICS INDUSTRIES, INC. • www.outwater.com

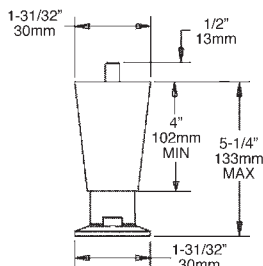


NSF CERTIFICATE NUMBERS AND MANUFACTURER NAME AVAILABLE UPON REQUEST.

4" Heavy Duty Appliance Legs



- Hi-temp, impact resistant thermoplastic body.
- Strong, die-cast flanged foot is nickel plated.
- Height adjusts 1-1/4".
- 3/8" - 16 Heavy duty steel mounting stud.
- Static load rating: 2000 lbs. per leg.

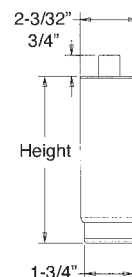


Part #	Finish	Threaded Stem
HDW-1902-BK	Black	3/8-16 Stud
HDW-1902-NP	Nickel Plated	3/8-16 Stud

Stainless Steel Clad Leg w/Adjustable Foot



- Stainless Steel Clad with strong engineered plastic internal construction.
- Round Foot with non-marking plastic glide.
- 2" overall diameter.
- Static load rating: 2000 lbs per leg.

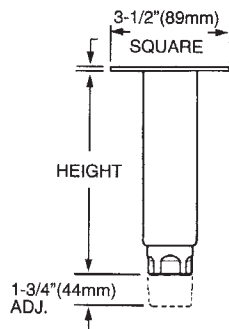


Part #	Height	Foot Adjusts	Threaded Stem
HDW-1907-4	4"	up to 1-3/4"	3/8-16 Stud
HDW-1908-4	6"	up to 2"	1/2-13 Stud
HDW-1908-6	6"	up to 2"	3/4-10 Stud

Tubular Leg Assembly w/Mounting Plate



- Stainless steel.
- 1-5/8" diameter.
- 3-1/2" square removable mounting plate.
- Static load rating: 2000 lbs. per leg.

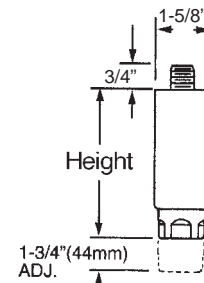


Part #	Height
HDW-1901	6"
HDW-1901-4	4"

Tubular Leg Assembly



- Stainless steel.
- 1-5/8" diameter.
- 1/2-13 x 3/4" stud.
- Static load rating: 2000 lbs. per leg.

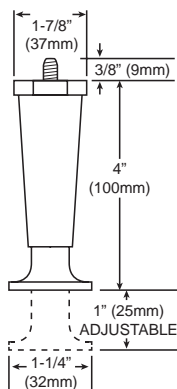


Part #	Height
HDW-1903	6"
HDW-1903-4	4"

4" Appliance Leg



- Nickel plated flange foot.
- 3/8-16 x 3/8" stud.
- Static load rating: 250 lbs. per leg.



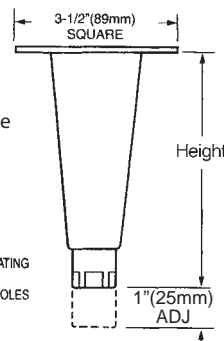
Part #	Height
HDW-1905	4"

Econoline Leg



- Nickel plated hex foot.
- 3-1/2" square removable mounting plate.
- Static load rating: 2000 lbs. per leg.

ALL MODELS HAVE A STATIC LOAD RATING OF 2000 LBS. (900kg) PER LEG
MTG PLATE HAS (4) 5/16" (8mm) DIA. HOLES ON 2-5/8" (66mm) CENTERS.



Part #	Height
HDW-1900	6"
HDW-1900-4	4"

**THIS PAGE LEFT
INTENTIONALLY
BLANK**

**THIS PAGE LEFT
INTENTIONALLY
BLANK**

Metal Leg Sets

Groove Mount



Screw Mount



- Adjustable from 4" to 6-1/2"
- Comes poly bagged in sets of 4 metal leg levelers, 4 metal sockets, 4 hollow bolts, 2 toe kick clips (screw mount or groove mount), 4 white & 4 almond cover caps
- 330 lb. weight capacity per leg

Part #	Toe Kick Clamp Style
CLG-425G	Groove Mount
CLG-426S	Screw Mount

ABS Plastic Leg Set



- Comes packed in sets of 4 black legs, 4 top sockets & 2 black toe clips

Part #	Height Adjustment	Material	Load Capacity Per Leg	Toe Kick Clamp Style
OPHS-2609	3.68"-6.28"	Polystyrene	450 lbs.	Screw

A La Carte Cabinet Legs & Accessories

Cabinet Leg

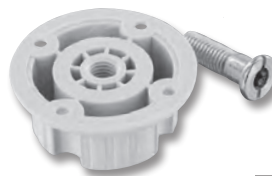


Material: ABS Plastic

- Two piece white leveling leg (foot & shaft)
- 330 lb. load capacity per leg

Part #	Height Adjustment
CLG-423-6	6" - 6-5/8"

Top Sockets



Material: ABS Plastic

- White
- Bolt included

Part #
CLG-841

2-Finger Toe Kick Clips



Material: ABS Plastic

- Metal Fingers to ensure long lasting connection to leg



Part #	Clamp Style
CLG-228A	Adhesive Mount
CLG-228G	Groove Mount
CLG-228S	Screw Mount

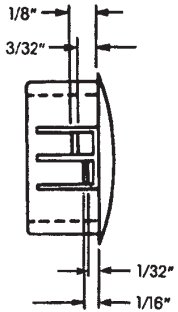
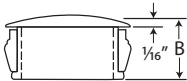
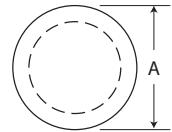


- Designed with multiple locks to snap in panel thicknesses from 1/64"-1/8"
- Used to close excess chassis holes, wiring outlets & production access holes
- Suitable for critical or elevated temperature application
- Can also be used for wood panel
- Heat stabilized nylon (UL94V2)
- ABS flammability rating (94-HB)

CLEAR

Part #	Chassis Dimensions		Part Dimensions	
	Hole Dia.	Maximum Thickness	A Head Dia.	B Thickness
MP-1000CL	1"	1/8"	1.125	.453

BLACK OR WHITE All available in Black, or add a "W" for White.



Part #	Chassis Dimensions		Part Dimensions	
	Hole Dia.	Maximum Thickness	A Head Dia	B Thickness
MP-0187	3/16"	1/16"	.250	.234
MP-0250	1/4"	1/16"	.312	.312
MP-0312	5/16"	1/16"	.375	.312
MP-0375	3/8"	1/8"	.468	.406
MP-0437	7/16"	1/8"	.531	.406
MP-0500	1/2"	1/8"	.578	.406
MP-0562	9/16"	1/8"	.656	.406
MP-0625	5/8"	1/8"	.718	.406
MP-0750	3/4"	1/8"	.922	.406
MP-0875	7/8"	1/8"	1.016	.453
MP-1000	1"	1/8"	1.203	.453
MP-1093	1-3/32" - 1-7/32"	1/8"	1.218	.453
MP-1187	1-3/16"	1/8"	1.312	.453
MP-1250	1-1/4"	1/8"	1.375	.453
MP-1375	1-3/8"	1/8"	1.500	.453
MP-1500	1-1/2"	1/8"	1.672	.453
MP-1750	1-3/4"	1/8"	1.906	.453
MP-2000	2"	1/8"	2.140	.453

LOCKING VENTED HOLE PLUGS

All available in Black, or add a "W" for White.



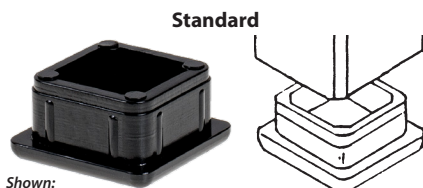
Part #	Hole Dia.	Maximum Thickness	A Head Dia.	B Thickness
MP-0750V	0.750"	0.125"	0.906"	0.406"
MP-0875V	0.875"	0.125"	1.1016"	0.453"

REMOVABLE VENTED NYLON PLUGS AVAILABLE, PLEASE INQUIRE!

- ABS plastic end cap/glides are designed to insert inside steel tubing for heavy duty applications.
- ABS - hard plastic, matte finish.
- The two ideal uses for insert caps are floor glides and tubing end caps.

S50-Series

Square



Application



PLEASE NOTE:

All sizes shown are outside dimensions of tube.

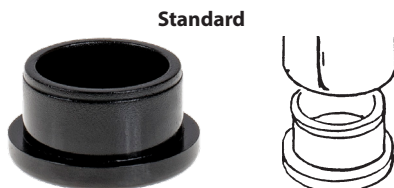
Insert caps are bulk packed for shipping, some scratching may occur.

Part#	Color	Outside Dim. Of Tube	Gauge Of Tubing
S50-1616BK	Black	1/2"	16
S50-1618WH	White ■	1/2"	18
S50-2016BK	Black	5/8"	16
S50-2018*	BK or WH ■	5/8"	18
S50-2414WH	White ■	3/4"	14
S50-2416BK	Black	3/4"	16
S50-2418*	BK or WH ■	3/4"	18
S50-2816*	BK or WH ■	7/8"	16
S50-3211BK	Black	1"	11
S50-3214BK	Black	1"	14
S50-3216BK	Black	1"	16
S50-3218BK	Black	1"	18
S50-3614WH	White ■	1-1/8"	14
S50-3616BK	Black	1-1/8"	16
S50-3618*	BK or WH ■	1-1/8"	18
S50-4011BK	Black	1-1/4"	11
S50-4014BK	Black	1-1/4"	14
S50-4016BK	Black	1-1/4"	16
S50-4018BK	Black	1-1/4"	18
S50-4811BK	Black	1-1/2"	11
S50-4814BK	Black	1-1/2"	14
S50-4816BK	Black	1-1/2"	16
S50-4818*	BK or WH ■	1-1/2"	18
S50-5611*	BK or WH ■	1-3/4"	11
S50-5614BK	Black	1-3/4"	14
S50-5616BK	Black	1-3/4"	16
S50-6411*	BK or WH ■	2"	11
S50-6414*	BK or WH ■	2"	14
S50-6416BK	Black	2"	16
S50-9611*	BK or WH ■	3"	11

■ WHILE SUPPLIES LAST

S53-Series

Round



Application



Part#	Color	Outside Dim. Of Tube	Gauge Of Tubing
S53-2018BK	Black	5/8"	18
S53-2416BK	Black	3/4"	16
S53-2418BK	Black	3/4"	18
S53-2814BK	Black ■	7/8"	14
S53-2816BK	Black	7/8"	16
S53-2818BK	Black	7/8"	18
S53-3214*	BK or WH ■	1"	14
S53-3216BK	Black	1"	16
S53-3218*	BK or WH ■	1"	18
S53-4014BK	Black	1-1/4"	14
S53-4018BK	Black	1-1/4"	18
S53-4816BK	Black	1-1/2"	16
S53-4818*	BK or WH ■	1-1/2"	18
S53-4820BK	Black ■	1-1/2"	20
S53-5618BK	Black ■	1-3/4"	18
S53-6416BK	Black	2"	16
S53-6418*	BK or WH ■	2"	18
S53-9611BK	Black	3"	11

■ WHILE SUPPLIES LAST

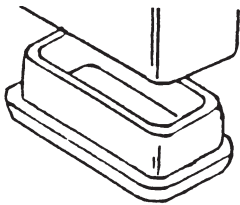
- Rectangular ABS plastic end cap/glides are designed to insert inside steel tubing for heavy duty applications
- ABS - hard plastic, matte finish
- The two ideal uses for rectangular insert caps are floor glides and tubing end caps

S56- Series

Standard



Shown:
S56-32-6414BK



Application



Part#	Color	Outside Dim. Of Tube	Gauge Of Tubing
S56-12-3220BK	Black ■	3/8" x 1"	20
S56-16-3216*	BK or WH ■	1/2" x 1"	16
S56-16-4818BK	Black ■	1/2" x 1-1/2"	18
S56-24-4816BK	Black	3/4" x 1-1/2"	16
S56-32-4814*	BK or WH	1" x 1-1/2"	14
S56-32-4815BK	Black ■	1" x 1-1/2"	15
S56-32-4816BK	Black	1" x 1-1/2"	16
S56-32-6414BK	Black	1" x 2"	14
S56-32-6416BK	Black	1" x 2"	16
S56-32-9611BK	Black ■	1" x 3"	11
S56-40-6416BK	Black ■	1-1/4" x 2"	16
S56-48-6411BK	Black	1-1/2" x 2"	11
S56-48-9611BK	Black ■	1-1/2" x 3"	11

■ WHILE SUPPLIES LAST

PLEASE NOTE:

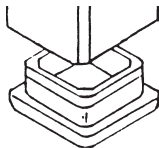
All sizes shown are outside dimensions of tube.
Insert caps are bulk packed for shipping, some scratching may occur.

Black Butyrate Insert Cap Glides

- Butyrate plastic end cap/glides are designed to insert inside steel tubing for heavy duty applications
- Butyrate - hard plastic, gloss finish
- The two ideal uses for insert caps are floor glides and tubing end caps
- Other sizes are available in Poly & ABS - please inquire

S51- Series

Square



Part#	Outside Dim. Of Tube	Gauge Of Tube	Color
S51-3216BK	1"	16	Black
S51-3216CL	1"	16	Clear

NOTE: Shown are outside dimensions of tube.

- ABS Chrome-Plated Insert Cap Glides Are Designed To Insert Inside Steel Tubing For Heavy Duty Applications.
- These Caps Are Available In Various Sizes To Fit Your Appropriate Gauge Steel Tubing.
- Will Not Tarnish Or Rust!
- Shiny, Brite Mirror-Like Finish.
- Other Sizes & Finishes Available On A Special Order Basis - Minimums Apply - Please Inquire.

S59 Series - Square Insert Caps



Part #	Outside Dia. Of Tube	Gauge Of Tubing	Finish
S59-3216CH	1"	16	Chrome
S59-3218CH	1"	18	Chrome

S60 Series - Round Insert Caps



Part #	Outside Dia. Of Tube	Gauge Of Tubing	Finish
S60-3214CH	1"	14	Chrome
S60-3216CH	1"	16	Chrome
S60-3218CH	1"	18	Chrome

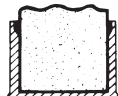
S61 Series - Rectangular Insert Caps



Part #	Outside Dia. Of Tube	Gauge Of Tubing	Finish
S61-16-4818CH	1/2" x 1-1/2"	18	Chrome
S61-32-6416CH	1" x 2"	16	Chrome

Plastic Caps

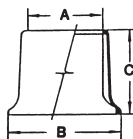
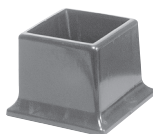
Square Caps



* **Black (BK)** or **White (WH)**
Material: Low Density Polyethylene

Part #	Fits Over Tubing	Height
S-16-*	1/2"	.581"
S-20-*	5/8"	.593"
S-24-*	3/4"	.585"
S-32-*	1"	.582"

Leg Protectors



Black
Material: Low Density Polyethylene

Part #	Dimensions		
	A	B	C
R71-510	2"	3-1/8"	2-1/2"
R71-511	2-1/4"	3-3/8"	2-1/2"
R71-512	2-1/2"	3-5/8"	2-1/2"

Heavy Caps



* **Black (BK)** or **White (WH)**
Material: Low Density Polyethylene

(5/8" Tall)

Part #	Iron Pipe	Fits Over Tubing
AG-12-*	1/8"	3/8"
AG-16-BK	1/4"	1/2"
AG-16-WH	1/4"	1/2"
AG-20-BK	3/8"	5/8"
AG-20-WH	3/8"	5/8"
AG-24-*	-	3/4"
AG-28-*	-	7/8"
AG-32-*	3/4"	1"
AG-36-*	-	1-1/8"
AG-40-*	1"	1-1/4"
AG-48-*	-	1-1/2"
AG-52-BK	1-1/4"	1-5/8"
AG-52-WH	1-1/4"	1-5/8"
AG-56-BK	-	1-3/4"
AG-64-BK	-	2"

(1" Tall)

Part #	Fits Over Tubing
AH-20-WH	5/8"
AH-24-*	
AH-28-BK	7/8"
AH-28-WH	7/8"
AH-32-*	1"

Wire Tips



* **Black (BK)** or **White (WH)**
Material: Vinyl

Part #	Fits Over Wire	Height
AW-6-*	3/16"	.455"
AW-8-BK	1/4"	.455"

- Nickel-Plated Metal Spring Caps Are Designed To Insert Inside Steel Tubing
- Fits 16 Or 18 Gauge Tubing
- These Caps Have A Shiny, Bright Finish
- These Caps Fit Flush With Edge And Provide An Excellent Finish For Tube Ends
- Other Finishes Are Available On A Special Order Basis - Please Inquire

S68 Series

Square Flat Metal Spring Caps



Part#	Outside Dia. Of Tube	Gauge Of Tubing	Finish
S68-24NP	3/4"	16, 18	Nickel Plated
S68-32NP	1"	16, 18	Nickel Plated

S70 Series

Round Domed Metal Spring Caps



Part#	Outside Dia. Of Tube	Gauge Of Tubing	Finish
S70-16NP	1/2"	16, 18	Nickel Plated
S70-20NP	5/8"	16, 18	Nickel Plated
S70-24NP	3/4"	16, 18	Nickel Plated
S70-28NP	7/8"	16, 18	Nickel Plated
S70-32NP	1"	16, 18	Nickel Plated
S70-40NP	1-1/4"	16, 18	Nickel Plated
S70-48NP	1-1/2"	16, 18	Nickel Plated
S70-64NP	2"	16, 18	Nickel Plated



- Low-Density Polyethylene
- Fits From 12 To 23 Gauge Tubing

- Perfect For Odd Gauge Tubing
- Color - Black And White Options



Shark Finned Insert Caps

Rectangle



Shown:
SHK-12RT-BK

Part #	Tube O.D.	Gauge
SHK-12RT-BK	1" x 2"	11-19
DNW-RT3264-BK	1" x 2"	14-23
DNW-RT3264-WH	1" x 2"	14-23

Square



Shown:
SHK-32S-BK

Part #	Tube O.D.	Gauge
DNW-S24-BK	3/4"	14-23
DNW-S24-WH	3/4"	14-23
SHK-32S-BK	1"	12-18
DNW-S32-BK	1"	14-23
DNW-S32-WH	1"	14-23
SHK-48S-BK	1-1/2"	12-18
DNW-S48-BK	1-1/2"	14-23
DNW-S48-WH	1-1/2"	14-23
DNW-S56-BK	1-3/4"	14-18
SHK-64S-BK	2"	12-18

Round



Shown:
SHK-32R-BK

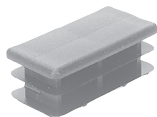
Part #	Tube O.D.	Gauge
DNW-R28-BK	7/8"	14-23
DNW-R28-WH	7/8"	14-23
SHK-32R-BK	1"	11-19
DNW-R32-WH	1"	14-23
SHK-40R-BK	1-1/4"	12-18
SHK-48R-BK	1-1/2"	11-19
SHK-80R-BK	2-1/2"	12-18
SHK-96R-BK	3"	14-18

Universal Insert Caps

- Fits From 14-23 Gauge Tubing
- Provides Positive Fit
- Perfect For Odd Gauge Tubing (Ex. 15 Gauge, 17 Gauge, Etc)

- Advanced Textured Top, Resists Scarring & Scratching
- All Sizes Stocked In Black And White Unless Specified
- Low-Density Polyethylene

For Rectangular Tubing

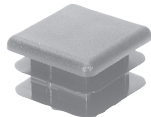


* Black (BK) or White (WH)

Part #	Tube O.D.
P32-U64-*	1" x 2"
RCR-12RT-WH^	1" x 2"
P32-U96-BK	1" x 3"
P48-U96-*	1-1/2" x 3"
P64-U112-BK	2" x 3-1/2"
P64-U96-*	2" x 3"

^ Fits 11-19 Gauge Tubing

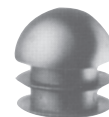
For Square Tubing



* Black (BK) or White (WH)

Part #	Tube O.D.
T24-U2-*	3/4"
T28-U2-*	7/8"
T32-U2-*	1"
T40-U2-*	1-1/4"
T48-U2-*	1-1/2"
T64-U2-*	2"
T80-U2-BK	2-1/2"

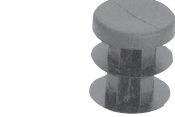
For Round Tubing



Domed
round caps
are smooth

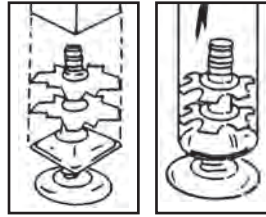
* Black (BK) or White (WH)

Part #	Tube O.D.
C20-U21-*	5/8"
C24-U21-*	3/4"
C28-U21-*	7/8"
C32-U21-*	1"
C40-U21-*	1-1/4"
C48-U21-*	1-1/2"
C56-U21-BK	1-3/4"



Part #	Tube O.D.
C16-U2-*	1/2"
C20-U2-*	5/8"
C24-U2-*	3/4"
C28-U2-*	7/8"
C32-U2-*	1"
C36-U2-BK	1-1/8"
C40-U2-*	1-1/4"
C48-U2-*	1-1/2"
C56-U2-*	1-3/4"
C64-U2-BK	2"

- Metal startype inserts are designed to insert inside steel tubular legs.
- These inserts are available in various sizes to fit 16 or 18 gauged steel tubing and thread size.
- External edges fit flush with outside edge of tubing for a clean, finished appearance.



**IDEAL FOR
CASTERS!**

Square DS71 Series

5/16-18 THREAD



Part #	Thread	Outside Dia. Of Tube	Gauge Of Tube
DS71-245	5/16-18	3/4"	16/18
DS71-325	5/16-18	1"	16/18
DS71-365	5/16-18	1-1/8"	16/18
DS71-405	5/16-18	1-1/4"	16/18
DS71-485	5/16-18	1-1/2"	16/18
DS71-645	5/16-18	2"	16/18

3/8-16 THREAD



Part #	Thread	Outside Dia. Of Tube	Gauge Of Tube
DS71-326	3/8-16	1"	16/18
DS71-366	3/8-16	1-1/8"	16/18
DS71-406	3/8-16	1-1/4"	16/18
DS71-486	3/8-16	1-1/2"	16/18
DS71-646	3/8-16	2"	16/18

Round DS72 Series

5/16-18 THREAD



Part #	Thread	Outside Dia. Of Tube	Gauge Of Tube
DS72-245	5/16-18	3/4"	16/18
DS72-325	5/16-18	1"	16/18
DS72-365	5/16-18	1-1/8"	16/18
DS72-405	5/16-18	1-1/4"	16/18
DS72-485	5/16-18	1-1/2"	16/18
DS72-645	5/16-18	2"	16/18

3/8-16 THREAD



Part #	Thread	Outside Dia. Of Tube	Gauge Of Tube
DS72-326	3/8-16	1"	16/18
DS72-366	3/8-16	1-1/8"	16/18
DS72-406	3/8-16	1-1/4"	16/18
DS72-486	3/8-16	1-1/2"	16/18
DS72-646	3/8-16	2"	16/18

Metal Tube Connectors



- Heavy duty tube connector application.
- "Double" star tube connectors are designed to grip inside of round or square steel tubing.

Part#	Member O.D. Flat To Flat	Thread	Gauge Of Tube
S67-204	5/8"	1/4-20	16/18
S67-244	3/4"	1/4-20	16/18
S67-324	1"	1/4-20	16/18
S67-404	1-1/4"	1/4-20	16/18



- Light duty tube connector application.
- Washers grip inside of round steel tubing.

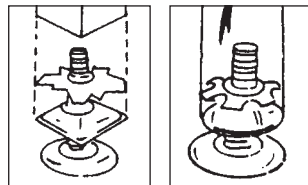
Part#	Member O.D. Flat To Flat	Thread	Gauge Of Tube
S73-244	3/4"	1/4-20	16/18
S73-324	1"	1/4-20	16/18



1" Round adaptor fits 16/18 Gauge tubing for 7/16" x 1-1/2" friction ring stem caster

[DSFRW-325](#)

- Metal startype inserts are designed to insert inside steel tubular legs.
- These inserts are available in various sizes to fit 16 or 18 gauged steel tubing and thread size.
- External edges fit flush with outside edge of tubing for a clean, finished appearance.
- To be used with levelers, not recommended to use with casters.



Square S62/S71 Series



Part #	Square	Outside Dia. Of Tube	Gauge Of Tube	Part #	Square	Outside Dia. Of Tube	Gauge Of Tube
S71-204	1/4-20	5/8"	16/18	S62-365	5/16-18	1-18"	16/18
S71-244	1/4-20	3/4"	16/18	S71-405	5/16-18	1-1/4"	16/18
S62-284	1/4-20	7/8"	16/18	S71-485	5/16-18	1-1/2"	16/18
S71-324	1/4-20	1"	16/18	S71-645	5/16-18	2"	16/18
S62-364	1/4-20	1-1/8"	16/18	S62-286	3/8-16	7/8"	16/18
S71-404	1/4-20	1-1/4"	16/18	S71-326	3/8-16	1"	16/18
S71-484	1/4-20	1-1/2"	16/18	S62-366	3/8-16	1-1/8"	16/18
S71-644	1/4-20	2"	16/18	S71-406	3/8-16	1-1/4"	16/18
S62-285	5/16-18	7/8"	16/18	S71-486	3/8-16	1-1/2"	16/18
S71-325	5/16-18	1"	16/18	S71-646	3/8-16	2"	16/18

Round S63/S72 Series



Part #	Round	Outside Dia. Of Tube	Gauge Of Tube	Part #	Round	Outside Dia. Of Tube	Gauge Of Tube
S72-204	1/4-20	5/8"	16/18	S72-405	5/16-18	1-1/4"	16/18
S72-244	1/4-20	3/4"	16/18	S72-485	5/16-18	1-1/2"	16/18
S63-284	1/4-20	7/8"	16/18	S72-645	5/16-18	2"	16/18
S72-324	1/4-20	1"	16/18	S63-725	5/16-18	2-1/4"	16/18
S63-364	1/4-20	1-1/8"	16/18	S63-286	3/8-16	7/8"	16/18
S72-404	1/4-20	1-1/4"	16/18	S72-326	3/8-16	1"	16/18
S72-484	1/4-20	1-1/2"	16/18	S63-366	3/8-16	1-1/8"	16/18
S72-644	1/4-20	2"	16/18	S72-406	3/8-16	1-1/4"	16/18
S63-724	1/4-20	2-1/4"	16/18	S72-486	3/8-16	1-1/2"	16/18
S63-804	1/4-20	2-1/2"	16/18	S63-566	3/8-16	1-3/4"	16/18
S63-285	5/16-18	7/8"	16/18	S72-646	3/8-16	2"	16/18
S72-325	5/16-18	1"	16/18	S63-726	3/8-16	2-1/4"	16/18
S63-365	5/16-18	1-1/8"	16/18				

Metal Threaded Grater Clips

CLICK PART# TO VIEW PRODUCT

- Square metal threaded grater clips are designed to insert inside square steel tubing
- External edges fit flush with the outside lip of tubing
- These clips are available in various sizes to fit 16 or 18 gauge steel tubing and various thread sizes
- Other gauges are available through special order. Minimums apply -please inquire
- These clips are barbed and flexible for fastening
- Heat treated and plated to resist rusting (steel with .060 thickness)



Four-Sided

Part#	Outside Dim. Of Tube	Gauge Of Tubing	Thread Hole Size
S645-324	1"	16,18	1/4-20



Four-Sided (Heavy Duty)

Part#	Outside Dim. Of Tube	Gauge Of Tubing	Thread Hole Size
S65-324	1"	16,18	1/4-20
S65-325	1"	16,18	5/16-18
S65-326	1"	16,18	3/8-16
S65-404	1-1/4"	16,18	1/4-20
S65-405	1-1/4"	16,18	5/16-18
S65-406	1-1/4"	16,18	3/8-16
S65-486	1-1/2"	16,18	3/8-16

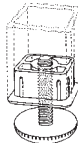
Four-sided grater clips can be used as caster inserts in light duty applications.

Plastic Threaded Insert Caps

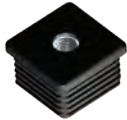
Black Nylon Caps w/Metal Thread



- HDPE with zinc plated steel threaded insert
- Ribbed to fit 16-18 gauge tubing unless noted



Square S27 Series



Part#	Outside Dim. Of Tube	Gauge Of Tubing	Thread
S27-244BK	0.75"	16-18	1/4-20
S27-324BK	1"	16-18	1/4-20
S27-326BK	1.5"	16-18	3/8-16
S27-328BK	1"	16-18	5/16-18
S27-406BK	1.25"	16-18	3/8-16

Round S28 Series



S28-324BK	1"	16-18	1/4-20
S28-328BK	1"	16-18	5/16-18
S28-408BK	1.25"	16-18	5/16-18
S28-488BK	1.5"	16-18	5/16-18

Rectangle S29 Series



S29-24-484BK	0.75" x 1.5"	16-18	1/4-20
S29-32-484BK	1" x 1.5"	16-18	1/4-20
S29-32-488BK	1" x 1.5"	16-18	5/16-18
S29-64-328BK	2" x 1"	16-18	5/16-18
S29-64-32148BK	2" x 1"	14-16	5/16-18

Square Nylon Caps with Nylon Thread



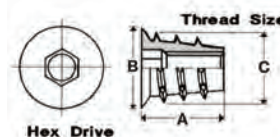
(White)

- Threaded insert cap designed to fit 16 or 18 gauge
- Caps fit inside steel tubing

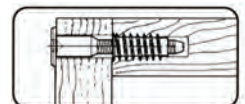
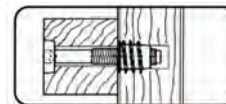
Part#	Outside Dim. Of Tube	Gauge Of Tubing	Thread	Color
S27-265WH	1"	16	1/4-20	White
S27-269BK	1"	18	5/16-18	Black

Insert Nuts

- Available with & without flange.
- Offers high retention values in blind & edge grain applications.
- Features hex drive for quick engagement.
- With flange allows for flush applications; without flange allows insert to be set below the surface.
- May be used with threaded stem casters.



Part#	Type	Thread	Dimensions		
			A	B	C
I-NUT250	No Flange	1/4-20	.512"	-	.453"
I-NUT3125	No Flange	5/16-18	.512"	-	.559"
I-NUT250F	With Flange	1/4-20	.512"	.492"	.461"
I-NUT3125F	With Flange	5/16-18	.512"	.571"	.531"
I-NUT375F	With Flange	3/8-16	.512"	.630"	.594"



Material: White Nylon
3/8" HOLE - 1/4-20 THREAD

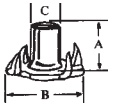
Part#	Dimensions	
	A	B
PG-1	3/8"	1/2"



Metal Threaded Inserts

Tee Nuts

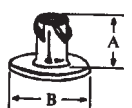
- Tee nuts are an economical method of fastening a threaded stem leveler to a wood component.
- 4 prong tee nuts can be used in either hard or soft wood.



Part#	Thread	Dimensions		
		A	B	C
T-NUT250	1/4-20	5/16"	3/4"	5/16"
T-NUT3125	5/16-18	3/8"	7/8"	3/8"
T-NUT375	3/8-16	7/16"	1"	1/2"

Propeller Nuts

- Propeller nuts provide excellent retention for blind applications such as levelers.
- Can be used in hard plastic applications.



Part#	Thread	Dimensions	
		A	B
P-NUT250	1/4-20	1/2"	5/8"
P-NUT3125	5/16-18	3/8"	7/8"
P-NUT375	3/8-16	7/16"	1"

- The longest lasting felt glide on the market today.
- Our glides will outlast all others 3 to 1 in comparison.
 - Great for table and chairs. Especially when used in commercial applications such as schools, restaurants, offices and rest areas!

Your Floors never "Felt" so Good!

Felt Bottom Adjustable Leveler

Brown PE base with Gray Felt bottom

Part #	Base	Thread	Stem	Height
SGL-324	1"	1/4-20	1"	.455
SGL-325	1"	5/16-18	1"	.455



Felt Bottom Nail-On Glide

Brown or White PE Base with Gray Felt Bottom

MEDIUM DUTY			Head		Nail		
Part #	Color	Shape	Dia.	Thick.	Dia.	Length	Sharp
R33F-92BR	Brown	Flat	3/4"	21/64"	5/64"	19/32"	x
R33F-92WH	White	Flat	3/4"	21/64"	5/64"	19/32"	x
R33F-93BR	Brown	Flat	7/8"	21/64"	5/64"	19/32"	x
R33F-93WH	White	Flat	7/8"	21/64"	5/64"	19/32"	x
R33F-94BR	Brown	Flat	1"	21/64"	5/64"	19/32"	x
R33F-94WH	White	Flat	1"	21/64"	5/64"	19/32"	x
R33F-95BR	Brown	Flat	1-1/8"	21/64"	5/64"	19/32"	x
R33F-95WH	White	Flat	1-1/8"	21/64"	5/64"	19/32"	x

LIGHT DUTY			Head		Nail		
Part #	Color	Shape	Dia.	Thick.	Dia.	Length	Sharp
SGLT-24WH	White	Flat	1"	11/32"	1/16"	35/64"	x
SGLT-28WH	White	Flat	1-1/8"	11/32"	1/16"	35/64"	x

- 125 lb. load rating.
- The most complete and versatile types of automatic self leveling glides.
- Eliminates wobble by instantly self-leveling to any uneven surface.
- Adjusts to 1/4" of wobble.
- No manual adjustment needed.
- Corrosion resistant.
- Use indoors & outdoors.
- Built to last with high-grade impact plastic and heat treated stainless steel.
- Installs by hand - no tools needed.



Super Leveler

Part #	Thread Size	Base Diameter	Installed Height	Maximum Load Rating	Movement System
SPL-250BK	1/4"-20 x .375"	1.28"	.92"	125 lbs. per glide, 500 lbs. per set	Spring & Ramp Mechanism



Super Shock

- 100 lb. load rating.
- Same function as the super leveler but slightly larger profile.
- Automatically adjusts up to 5/16"
- 3/8" Long threaded stem

Part #	Thread Size	Base Diameter	Installed Height	Maximum Load Rating	Movement System
SPS-250BK	1/4"-20 x .375	1.50"	1.15"	100 lbs. per glide, 400 lbs. per set	Hydraulic
SPS-312SBK	5/16"-18 x .375	1.50"	1.15"	100 lbs. per glide, 400 lbs. per set	Hydraulic
SPS-375BK	3/8"-16 x .375	1.50"	1.15"	100 lbs. per glide, 400 lbs. per set	Hydraulic

Ultra Glide System

- Low carbon steel, zinc plated with a molded nylon base.
- Pre-assembled leveling system
- Reduces cost by allowing use of a thinner side panels.
- End cap resistant to loosening, making this great for shipping assembled furniture.
- Requires 5/16" drill hole size to install.

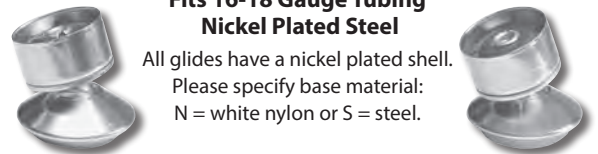


Part #
[UG-516](#)

Regal Swivel Glide

Fits 16-18 Gauge Tubing Nickel Plated Steel

All glides have a nickel plated shell.
Please specify base material:
N = white nylon or S = steel.



Corner Block w/Barb Nut

5/16-18 Thread • Black



R44-952BK,
R44N-952BK



R44BN-952BK



Part #	Material	Barb Nut Placement
R44-952BK	H.D.P.E.	Top
R44N-952BK	Nylon	Top
R44BN-952BK	Nylon - reversed thread	Underside

Windsor

White PE Base
^with Hex



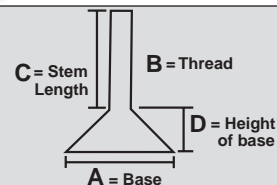
With plain head



With hex head

Part #	A	B	C	D
^WINDSOR-11	1-1/8"	1/4-20	1"	.6693
WINDSOR-14	1-1/8"	1/4-20	1"	.5512
^WINDSOR-21	1-1/8"	5/16-18	1"	.6693
^WINDSOR-22	1-1/8"	5/16-18	1-1/2"	.6693

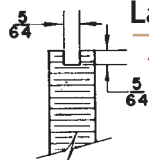
**LEVELER
SPECIFICATIONS
For All Levelers
Shown:**



Small Oval Base Leveler

HDPE Base

Part #	Colors	A	B	C	D
R33-124	White	5/8"	1/4-20	1"	1/4"
R33-130	Beige or White	3/4"	1/4-20	1"	1/4"
R33-131	Beige	7/8"	1/4-20	1"	1/4"
R33-132	White	1"	1/4-20	1"	1/4"
R33-139	White	1-1/8"	1/4-20	5/8"	1/4"



Large Flat Base Leveler

^Screw Slot

HDPE Base

Part #	Colors	A	B	C	D
R33-122	Black or White	1-1/2"	5/16-18	1-1/2"	19/64"
R33-123	Black	1-1/2"	1/4-20	1"	19/64"
R33-355	Black or White	1-1/2"	1/4-20	1-1/2"	19/64"
^R33-516	Black or White	1-1/2"	3/8-16	1-1/2"	19/64"
R33-6010	Black	2"	3/8-16	1"	25/64"
^R33-6011	Black	1-3/4"	3/8-16	1-1/2"	21/64"



Swivel Base Leveler

HDPE Base

25° Angle

Part #	Color	A	B	C	D
R33-134BK	Black	1-1/8"	1/4-20	1"	.455'
R33-134WH	White	1-1/8"	1/4-20	1"	.455'

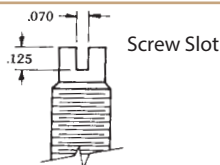
Robot Non-Skid Leveler

Thermoplastic Rubber Black Base



Part #	A	B	C	D
ROBOT10	1-1/8"	1/4-20	1"	27/64"
ROBOT12	1-1/8"	5/16-18	1"	27/64"
ROBOT14	1-1/8"	3/8-16	1"	27/64"

With Screw Slot Beige HDPE Base



Part #	A	B	C	D
R33-7000BE	1-1/8"	5/16-18	4"	1/4"



Windsor

Clear K-Resin Base

Part #	A	B	C	D
WL78	1-1/8"	1/4-20	1"	.3937



Thick Base Leveler

HDPE Base

Part #	Color	A	B	C	D
R33-358BK	Black	1-1/8"	5/16-18	1-1/2"	3/8"
R33-5340BK	Black	7/8"	5/16-18	1"	1/4"



Hex Base Leveler

Black Nylon Base



Part #	A	B	C	D	Hex Dia.
PL4-250	1"	1/4-20	1"	27/64"	5/8"
PL4-3125	1"	5/16-18	1"	27/64"	5/8"
PL4-375	1"	3/8-16	1"	7/16"	5/8"
PL6-250	1"	1/4-20	1-1/2"	27/64"	5/8"
PL6-3125	1"	5/16-18	1-1/2"	27/64"	5/8"
PL6-375	1"	3/8-16	1-1/2"	7/16"	5/8"
PL7-250	1-1/4"	1/4-20	1"	27/64"	7/8"
PL7-3125	1-1/4"	5/16-18	1"	27/64"	7/8"
PL7-375	1-1/4"	3/8-16	1"	27/64"	7/8"
PL8-250	1-1/4"	1/4-20	1-1/2"	27/64"	7/8"
PL8-3125	1-1/4"	5/16-18	1-1/2"	27/64"	7/8"
PL8-375	1-1/4"	3/8-16	1-1/2"	27/64"	7/8"

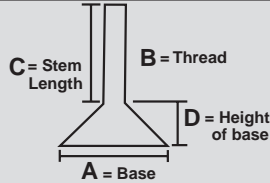
Slotted Hex Leveler

Black Nylon Base

Part #	A	B	C	D
R33-6600BK	1"	5/16-18	1-1/2"	.275



**LEVELER
SPECIFICATIONS
For All Levelers
Shown:**



Cushion Glide Leveler



Nickel Plated Shell With Black HDPE Base

Part #	A	B	C	D
■ CG100	7/8"	1/4-20	1"	3/8"
■ CG102	1-1/16"	1/4-20	1"	3/8"
■ CG103	1-1/16"	5/16-18	1"	3/8"
■ CG104	1-1/4"	5/16-18	1"	3/8"

Zinc Plated Shell With Black Base

Part #	A	B	C	D
■ CG105	1-1/4"	3/8-16	1"	7/16"

Monaco Swivel

Nickel Plated With White Nylon Base

Part #	A	B	C	D
■ MONO-10	1-1/8"	1/4-20	1/2"	37/64"
■ MONO-11	1-1/8"	1/4-20	1"	37/64"
■ MONO-12	1-1/8"	5/16-18	1"	37/64"
■ MONO-13	1-1/8"	5/16-18	1-1/2"	37/64"
■ MONO-14	1-1/8"	3/8-16	1"	37/64"
■ MONO-15	1-1/8"	3/8-16	1-1/2"	37/64"

Swivel >



Monaco Non-Swivel

Nickel Plated With White PE Base

Part #	A	B	C	D
■ MONO-30	1-1/8"	1/4-20	1"	.6693
■ MONO-31	1-1/8"	5/16-18	1"	.6693
■ MONO-32	1-1/8"	5/16-18	1-1/2"	.6693
■ MONO-33	1-1/8"	3/8-16	1"	.6693
■ MONO-34	1-1/8"	3/8-16	1-1/2"	.6693

Non-Swivel >



Monaco Adjustable Leveler

**Nickel Plated With White Nylon Base
Slotted Bolt Swivel With Hex Base**

Part #	A	B	C	D	O.A. HT.
■ R33-7500	1-1/2"	3/8-16	1-1/2"	5/8"	2"
■ R33-7510	1-1/2"	3/8-16	2-1/2"	5/8"	3"
■ R33-7520	1-1/2"	3/8-16	3"	5/8"	3-1/2"
■ R33-7530	1-1/2"	3/8-16	3-1/2"	5/8"	4"
■ R33-7540	1-1/2"	3/8-16	4"	5/8"	4-1/2"



"Big Foot" Leveler with Hex Nut

Nickel Plated With Black Nylon Base

Part #	A	B	C	D
■ BFL-375BK	2-1/2"	3/8-16	1-1/2"	.48"
■ BFL-3125BK	2-1/2"	5/16-18	1-1/2"	.48"



Titan

**Nickel Plated With White Base
^without Hex**

< With plain head

With hex head >



Part #	A	B	C	D
■ TITAN-10	1"	1/4-20	1"	.5512
■ ^TITAN-11	1-3/8"	1/4-20	1"	.5906
■ ^TITAN-13	1-11/16"	1/4-20	1"	.5906
■ TITAN-14	1-3/8"	5/16-18	1"	.7087
■ TITAN-16	1-3/8"	5/16-18	1-1/2"	.7087
■ TITAN-17	1-11/16"	5/16-18	1"	.7087
■ TITAN-19	1-11/16"	5/16-18	1-1/2"	.7087
■ TITAN-20	1-3/8"	3/8-16	1"	.7087
■ TITAN-22	1-3/8"	3/8-16	1-1/2"	.7087
■ TITAN-23	1-11/16"	3/8-16	1"	.7087
■ TITAN-25	1-11/16"	3/8-16	1-1/2"	.7087

Metal Levelators

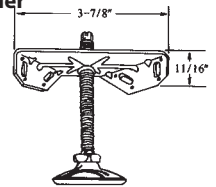
K-75- 3/8" Thread 3" or 4" Long

**Corner Brace With Slotted Leveler & Hex Nut
Set Includes 1 Brace & 1 Leveler**



Part #	Description
■ K-75-3	3/8" x 3" Long
■ K-75-4	3/8" x 4" Long

K-75 BRACE ONLY



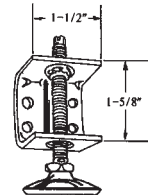
LI-158- 3/8" Thread 3" or 4" Long

**Support Brace With Slotted Leveler & Hex Nut
Set Includes 1 Brace & 1 Leveler**



Part #	Description
■ LL-158-3	3/8" x 3" Long
■ LL-158-4	3/8" x 4" Long

**LL-158 BRACE ONLY
LL-159 5/16-18 BRACE ONLY**



WL-218- M10 Thread 2-1/2" Long

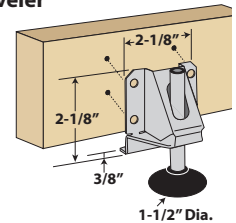
**Support Brace With Leveler (adjust with 5mm hex key)
Set Includes 1 Brace & 1 Leveler**

Black Polypropylene Base



Part #	Description
■ WL-218-25	M10 x 2-1/2" Long
■ WL-218-25-B	BRACE ONLY
■ PL7-M10	LEVELER ONLY

Mounts with #6 or #8 screw, - see page G-23



Long Stem Leveler

**Zinc Plated Metal Glide with a Co-Polymer Plastic Base
Socket and Nut Included**

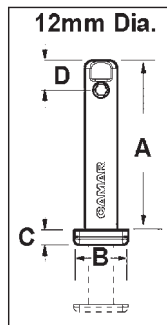
Part #	A	B	C	D
■ BG-38-4	2-5/16"	3/8-16	4-3/4"	.638



Material: Stainless Steel Core w/Black Polypropylene Base



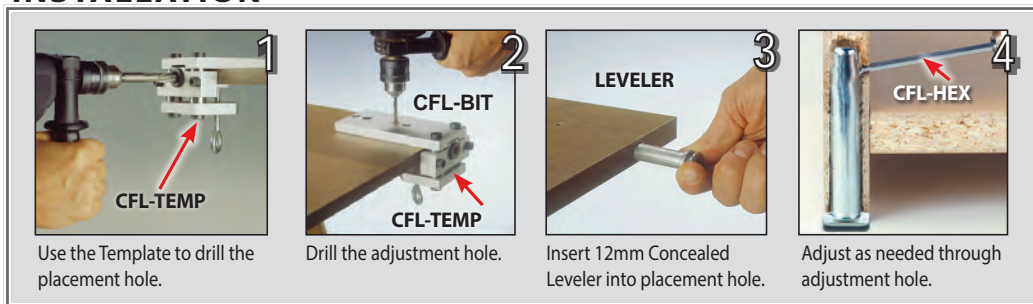
- Sturdy metal levelers won't bend when moving furniture and no need to lift furniture
- One person adjustment with #4 hex key (sold separately)
- Up to 1" height adjustment (11/16" on CFL-1125)
- 660 lb. load capacity per leveler
- Drilling template & 12 mm drill bit available
- Minimum side board depth is 5/8" (16mm)



Part #	A	B	C	D
CFL-1125	1-1/4"			
CFL-2000	2"			
CFL-2875	2-7/8"	13/16" x 5/8"	7/32"	7/16"
CFL-4000	4"			
CFL-4750	4-3/4"			

Part #	Description
CFL-HEX	#4 Hex Key for concealed furniture leveler
CFL-TEMP	Drill Template for concealed furniture leveler
CFL-BIT	12mm Drill Bit for concealed furniture leveler

INSTALLATION

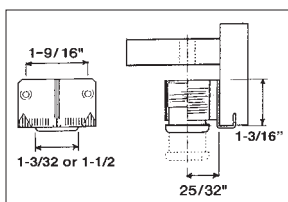


Heavy Duty Furniture Levelers

Material: Iron Leveler with ABS Foot



- For wall units & furniture
- 220 lbs. or 330 lbs. capacity per leveler
- 3/4" height adjustment

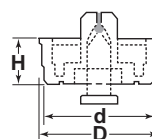


Part #	Load Capacity	Foot Diameter
LL-220L	220 lbs.	1-3/32"
LL-330L	330 lbs.	1-1/2"

LL-220L installs with 6mm Hex head screws (not included)
LL-330L installs with 6# Panhead screws (not included)

Material: Nylon 6 (Rivet)
TPE (Foot)

- Ideal for use with corrugated displays and small table top appliances and test equipment.
- Use with thin gauge metal for toaster ovens, blenders, food processors, cabinets, etc.
- Feet are supplied with incorporated push rivets to quickly and easily install into pre-drilled holes.
- Can be removed by pushing the plunger back thru from the opposite side.



Part #	Panel Thickness	Hole Dia.	d	D	H
RF29-100BK	.031"-.071"	.122"-.126"	.531"	.559"	.217"
RF29-110BK	.031"-.071"	.161"-.165"	.79"	.827"	.165"
RF29-115BK	.071"-.110"	.161"-.165"	.79"	.827"	.165"
RF29-120BK	.114"-.146"	.161"-.165"	.79"	.827"	.165"
RF29-125BK	.150"-.189"	.161"-.165"	.79"	.827"	.165"
RF29-130BK	max .02"	.161"-.165"	.551"	.591"	.236"
RF29-140BK	.039"-.079"	.161"-.165"	.551"	.591"	.236"
RF29-150BK	.031"-.047"	.200"-.205"	.551"	.591"	.236"
RF29-155BK	.051"-.091"	.200"-.205"	.551"	.591"	.236"
RF29-160BK	.031"-.071"	.161"-.165"	.79"	.827"	.236"
RF29-180BK	.039"-.079"	.161"-.165"	.79"	.827"	.315"
RF29-195BK	.039"-.079"	.161"-.165"	.551"	.591"	.354"
RF29-225BK	.059"-.087"	.142"-.146"	.394"	.425"	.157"

Material: PVC/Polystyrol/Polystyrene

- Non-skid
- Non-marring
- Safe for hardwoods & tile floors
- Single screw application
- Extremely low profile only 3/8" height
- Works with 3/16" x 1" screw - **NOT INCLUDED**



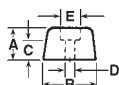
Part #	Diameter
LPG-24BK	24mm
LPG-28BK	28mm

Also available in brown and white, minimum required - please inquire.

Low Profile Glide

Material: Polyastomer*

- Use on: bread boxes, cutting boards, cook book holders, etc.
- Also used as heavy duty bumpers for hinged & sliding doors.
- Use wood or machine screws (**See screw chart below**).
- Other sizes available - please inquire.
- Approximately 1/4" high.

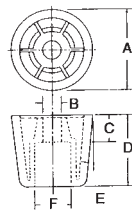


Part #	Approx. Bottom Dia.	A	B	C	D	E	Uses Screw
R29-0075	3/8"	.22"	.39"	.14"	.13"	.30"	#4 Pan
R29-0421	1/2"	.25"	.50"	.10"	.15"	.28"	A
R29-0425	3/4"	.28"	.75"	.16"	.17"	.38"	B
R29-0425BR	3/4"	.28"	.75"	.16"	.17"	.38"	B
R29-0447	1"	.31"	1.00"	.13"	.18"	.60"	B

Black Rubber-Like Non-Skid Case Feet

Material: High Density Polyethylene

- Ideal use: Floor glides on movable furniture.
- Easily attached to wood, metal or plastic with wood screws - **NOT INCLUDED**.
- Multi-ribbed design gives exceptional strength for heavy loads.
- Use wood or machine screws (**See screw chart below**).



Part #	A	B Hole Dia.	C	D	E Taper	F	Uses Screw	Color
R29-140BK	7/8"	13/64"	1/4"	1/2"	10°	3/8"	B	Black
R29-141BK	7/8"	13/64"	1/4"	5/8"	8°	3/8"	B	Black
R29-141BR	7/8"	13/64"	1/4"	5/8"	8°	3/8"	B	Brown
R29-142BK	1"	13/64"	3/8"	3/4"	8°	3/8"	C	Black
R29-142BR	1"	13/64"	3/8"	3/4"	8°	3/8"	C	Brown
R29-144BK	1-1/8"	1/4"	3/8"	1"	6°	1/2"	D	Black
R29-144BR	1-1/8"	1/4"	3/8"	1"	6°	1/2"	D	Brown
R29-275BK	7/8"	5/32"	3/16"	3/8"	8°	5/16"	A	Black
R29-275BR	7/8"	5/32"	3/16"	3/8"	8°	5/16"	A	Brown

Plastic Slippery Case Feet

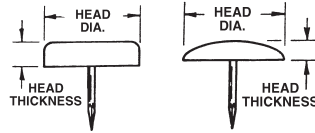
BROWN & BLACK

Screw Chart

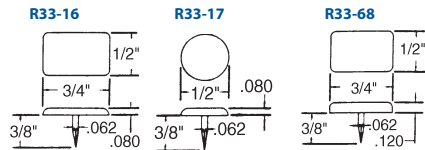
Screw Part #	Description
A SCR-6625PHZ	#6 x 5/8" Pan Head Zinc
B SCR-8625PHZ	#8 x 5/8" Pan Head Zinc
C SCR-8100PHZ	#8 x 1" Pan Head Zinc
D SCR-1750PHZ	#10 x 3/4" Pan Head Zinc

Plastic Headed Tacks

Material: HDPE

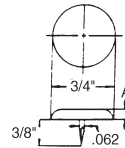


Part #	Color	Head		Nail			
		Shape	Dia.	Thick.	Dia.	Length	Sharp
R33-72WH	White	Oval	1/2"	3/16"	.072	11/16"	x
R33-72BE	Beige	Oval	1/2"	3/16"	.072	11/16"	x
R33-70BE	Beige	Oval	1/2"	1/4"	.072	11/16"	x
R33-73WH	White	Oval	5/8"	3/16"	.072	11/16"	x
R33-73BE	Beige	Oval	5/8"	3/16"	.072	11/16"	x
R33-18WH	White	Flat	5/8"	3/16"	.072	11/16"	x
R33-18BE	Beige	Flat	5/8"	3/16"	.072	11/16"	x
R33-91WH	White	Flat	5/8"	1/4"	.072	11/16"	x
R33-91BE	Beige	Flat	5/8"	1/4"	.072	11/16"	x
R33-2018DBR	Dk. Brown	Flat	5/8"	1/4"	.072	1/2"	x
R33-74BE	Beige	Oval	3/4"	3/16"	.072	11/16"	x
R33-19WH	White	Flat	3/4"	3/16"	.072	11/16"	x
R33-19BE	Beige	Flat	3/4"	3/16"	.072	11/16"	x
R33-92WH	White	Flat	3/4"	1/4"	.072	11/16"	x
R33-92BE	Beige	Flat	3/4"	1/4"	.072	11/16"	x
R33-75WH	White	Oval	7/8"	3/16"	.072	11/16"	x
R33-75BE	Beige	Oval	7/8"	3/16"	.072	11/16"	x
R33-79WH	White	Oval	7/8"	3/16"	.072	1/2"	x
R33-79BE	Beige	Oval	7/8"	3/16"	.072	1/2"	x
R33-20BE	Beige	Flat	7/8"	3/16"	.072	11/16"	x
R33-93WH	White	Flat	7/8"	1/4"	.072	11/16"	x
R33-93BE	Beige	Flat	7/8"	1/4"	.072	11/16"	x



Part #	Color
R33-16BE	Beige
R33-16WH	White
R33-17BE	Beige
R33-68BE	Beige

Part #	A	Color
R33-579BR	1/8"	Brown
R33-580BR	3/16"	Brown
R33-600BR	3/32"	Brown



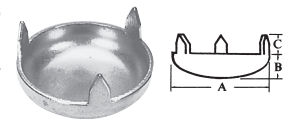
1 Or 3 Prong Nail-On Glides Nickel Plated Steel

1-PRONG GLIDES are precision stamped with shanks tightly wedged into heavy heads. Points are sharp-easily driven. Supplied in high quality nickel plated steel.



Part #	A	B
H-12	1/2"	1/2"
H-58	5/8"	5/8"
H-34	3/4"	3/4"

3-PRONG GLIDES are measured according to inside diameter, thus oversized. Precision stamped with long, sharp prongs. Supplied in heavy gauge, high quality nickel plated steel.



Part #	A	B	C
HGL-58	5/8"	13/64"	13/64"
HGL-34	3/4"	13/64"	1/4"
HGL-78	7/8"	1/4"	15/64"

Nail-On Cushion Glides Nickel Plated Base With Rubber Cushion

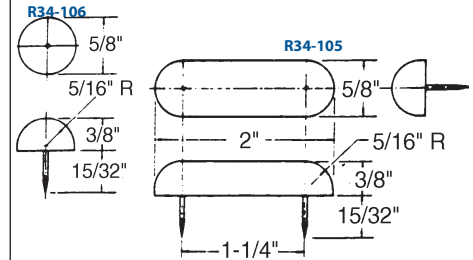


Nail-On Glides with rubber cushion provides maximum floor protection, reduces vibration and noise and absorbs shock. Supplied with nickel plated base.

NICKEL PLATED NAIL-ON CUSHION GLIDE			
Part #	Base Dia.	Base Ht.	Nail Length
NCG-875	7/8"	13/32"	.740"
NCG-1062	1-1/8"	13/32"	.675"

Plastic Nail Bumpers

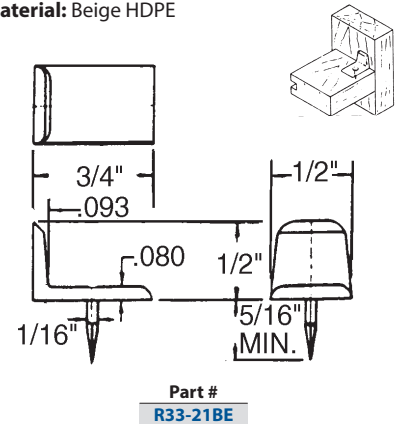
Material: HDPE



Part #	Color
R34-106BR	Brown
R34-106WH	White
R34-105BR	Brown
R34-105WH	White

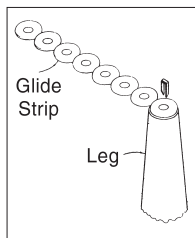
Plastic Corner Glide

Material: Beige HDPE

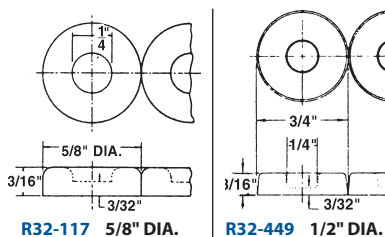


Staple-On Strip Glide

- **Material:** HDPE
- Strip glides are molded 8 glides per strip for easy installation.
- Position first glide on leg. Hold remaining strip in your hand and drive staple through glide into the leg.
- Lift and twist remaining strip off.
- Use galvanized staples to prevent rust.
- Use staples at least 3/4" long.



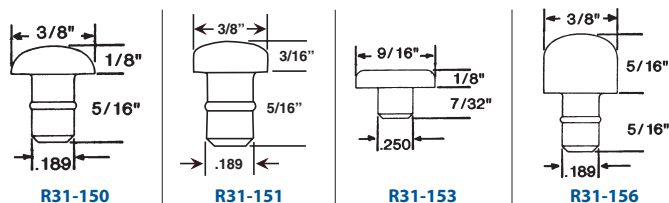
Lift, twist & separate strip from installed glide



Part #	Color
R32-117BE	Beige
R32-449WH	White
R32-449DB	Dk. Brown

Stud Type Button Glides

- **Material:** HDPE
- Slippery, self-lubricating plastic glide.
- Glides are soft, yet tough and resilient.
- Button glides install into a round drilled or punched hole.
- May be installed in wood, sheet metal or other materials.



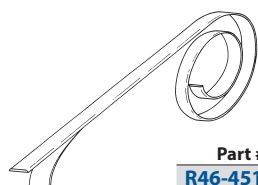
Part #	Color
R31-150WH	White
R31-151WH	White
R31-153WH	White
R31-156WH	White

Sections

- **Material:** HDPE
- Smooth gliding action after application.
- Used under glass tops where sliding action is needed, in heavy wood drawers where nailing is difficult and in metal drawers when drilling is to be avoided.

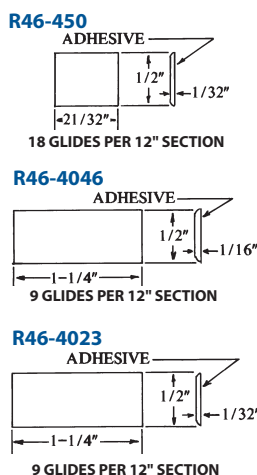
Part #	Color
R46-450OW	Off White
R46-4046OW	Off White
R46-4046BK	Black
R46-4023OW	Off White
R46-4023BK	Black

- Material is supplied in 12" sections.
- Glides can be peeled off one at a time.



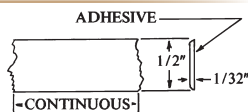
Part #	Color
R46-451OW	Off White

Adhesive Glide Strips



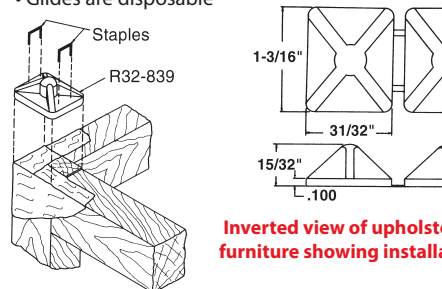
Continuous Coil

- **Material:** HDPE
- One piece glide strip.
- Coil may be cut to desired length.



In-Plant Floor Glide

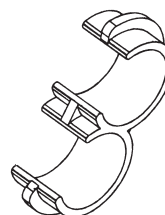
- **Material:** HDPE
- Use to make moving furniture easier during manufacturing.
- Glide is stapled to frame rail or stretcher
- Glides are disposable



Part #	Color
R32-839	White

Ganging Clip

Material: HDPE

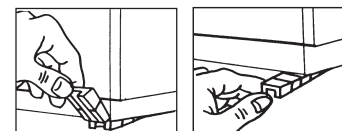
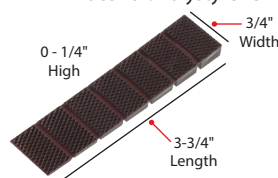


Designed for connecting 1" round chair legs together so chairs stay even in rows. Can also be used for 1" round tubing. To install simply snap into place.

Part #
1912-BK

Break-Away Plastic Furniture Wedge

Material: Polystyrene



Part #	Color
58-076-400	Dk. Brown

Floor Glide And Protector



- **Material:** Polyethylene
- Staple to underside of cabinets or furniture
- Prevents damage to cabinets during handling and transportation.
- 1/4" (60mm) of clearance between cabinet and floor

Part #	Size	Color
R32-737	1-1/2"	Natural

Pac-50

2" Diameter Wheels

Material: Zinc Die-Cast Hood
w/Nylon Wheel



Shown with
Brass Plated
#1 Top Plate



Shown with
Brite Chrome
#7 Thread
& Brake

Swivel Without Brake

Part #	Hood Finish
PAC-50*-CHR	Brite Chrome
PAC-50*-BRS	Brass Plated
PAC-50*-SC	Satin Chrome
PAC-50*-AB	Antique Brass

** Please use chart on right
determine required top portion*

Swivel With Brake

Part #	Hood Finish
PAC-50*-CHR-BRK	Brite Chrome
PAC-50*-BRS-BRK	Brass Plated
PAC-50*-SC-BRK	Satin Chrome
PAC-50*-AB-BRK	Antique Brass

Top Portions Available

#(1) Top Plate 3/16" Hole Dia. 	#(2) 5/16" x 1-1/2" Long Gripneck Comes with Socket for Wood	#(3) 1/4-20 x 1/2" Thread #(4) 5/16-18 x 1-1/2" Thread #(5) 5/16-18 x 1" Thread
#(7) 3/8-16 x 3/4" Thread 	#(8) 3/8-16 x 1" Thread #(9) 3/8-16 x 1-1/2" Thread 	#(10) 3/8" x 1" Friction #(11) 7/16" x 7/8" Friction #(12) 7/16" x 1-7/16" Friction

Pac-60

2-3/8" Diameter Wheels

Material: Zinc Die-Cast Hood
w/Nylon Wheel



Shown with
Brite Chrome
#2 Gripneck



Shown with
Satin Chrome
#10 Thread



Shown with
Antique Brass
#14 Friction
Stem

Swivel Without Brake

Part #	Hood Finish
PAC-60*-CHR	Brite Chrome
PAC-60*-BRS	Brass Plated
PAC-60*-SC	Satin Chrome
PAC-60*-AB	Antique Brass

** Please use chart below to
determine required top portion*

Top Portions Available

#(1) Top Plate 3/16" Hole Dia. 	#(2) 5/16" x 1-1/2" Long Gripneck Comes with Socket for Wood	#(3) 5/16-18 x 1/2" Thread #(4) 5/16-18 x 7/8" Thread 	#(5) 5/16-18 x 1-1/4" Thread 	#(7) 3/8-16 x 3/4" Thread #(8) 3/8-16 x 1-1/2" Thread 	#(9) 3/8" x 1" Friction #(10) 7/16" x 7/8" Friction #(11) 7/16" x 1-7/16" Friction
---	--	--	---	--	---



CLICK PART# TO VIEW PRODUCT

Hooded Twin Wheel Series

Samson

2" Diameter Wheels

Material: Black Nylon w/Zinc Finish Stem/Plate

- 75 lb. Load Capacity, for Light Duty Mobility
- Variety of Mounting Options Available

Part #	Brake Option	Hood Finish
SAMS-*-BK	w/o Brake	Black
SAMS-*-BK-BRK	w/Brake	Black



Shown with #1 Top Plate & Brake



Shown with #14 Friction Stem

** Please use chart below to determine required top portion*

Hercules

2-3/8" Diameter Wheels

Material: Black Nylon w/Zinc Finish Stem/Plate

- 100 lb. Load Capacity, for Light-Medium Duty Mobility
- Variety of Mounting Options Available

Part #	Brake Option	Hood Finish
HERC-*-BK	w/o Brake	Black
HERC-*-BK-BRK	w/Brake	Black



Shown with #10 Thread & Brake



Shown with #2 Gripneck

** Please use chart below to determine required top portion*

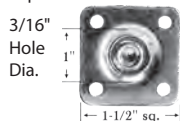
CASTER SPECIFICATIONS:

	Samson (2")	Hercules (2-3/8")
Mounting Height With Top Plate	2-9/16"	3"
Mounting Height with Threaded & Friction Ring Stems	2-5/16"	2-11/16"
Swivel Radius Without Brake	1-3/4"	2-3/16"
Swivel Radius With Brake	2-1/8"	2-7/8"

Top Portions Available

#(1)

Top Plate



#(2)

5/16" x 1-1/2" Long Gripneck

Comes with Socket for Wood



#(3)

1/4-20 x 1/2" Thread

#(4) 1/4-20 x 1" Thread



#(6)

5/16-18 x 3/4" Thread

#(7) 5/16-18 x 1" Thread



#(10) 3/8-16 x 1" Thread



#(11)

3/8" x 1" Friction

#(13) 7/16" x 7/8" Friction

#(14) 7/16" x 1-3/8" Friction



#(16)

Fits 3/4" Board

U-CLIP



SEE PAGE E-19 FOR METAL THREADED INSERTS AND PAGES E-17~18 FOR METAL THREADED STARTYPES





**CLICK PART #
TO VIEW PRODUCT**

Soft Tread Hooded Twin Wheel Series

2" Diameter Wheels

Material: Black Nylon Body, Soft Polyurethane Tread
with Zinc Finish Stem/Plate

- 110 lb. Load Capacity
- Multiple Mounting Options Available

Part #	Brake Option
SM-50-1-BK	-
SM-50-1-BK-BRK	Brake
SM-50-13-BK	-
SM-50-13-BK-BRK	Brake
SM-50-6-BK	-
SM-50-6-BK-BRK	Brake



Shown with
#13 Friction
Stem



Shown with
#13 Friction
Stem & Brake

** Please use chart below to
determine required top portion*

2-3/8" Diameter Wheels

Material: Black Nylon Body, Polyurethane Tread
with Zinc Finish Stem/Plate

- 132 lb. Load Capacity
- Multiple Mounting Options Available



Shown with
#6 Thread



Shown with
#6 Thread
& Brake



Shown with
#1 Top Plate



Shown with
#1 Top Plate
& Brake

** Please use chart below to
determine required top portion*

Part #	Brake Option
HC-60-1-BK	-
HC-60-1-BK-BRK	Brake
HC-60-13-BK	-
HC-60-13-BK-BRK	Brake
HC-60-6-BK	-
HC-60-6-BK-BRK	Brake

Top Portions Available

#(1)

Top Plate

3/16"
Hole
Dia.



#(6)

5/16-18 x 3/4"
Threaded
Stem



#(13)

7/16" x 7/8"
Friction
Ring
Stem



CASTER SPECIFICATIONS:

	2"	2-3/8"
Mounting Height with Top Plate:	2-9/16"	3"
Mounting Height w/ Threaded & Friction Ring Stems:	2-5/16"	2-11/16"
Swivel Radius without Brake:	1-3/4"	2-3/16"
Swivel Radius with Brake:	2-1/8"	2-7/8"

SEE PAGE E-19 FOR METAL THREADED INSERTS AND PAGES E-17~18
FOR METAL THREADED STARTYPES

Phone: 1-800-631-8375 • Fax: 1-800-888-3315

Mity Mite Series

- All nylon construction provides high load ratings and durability.
- Sleek and contemporary rounded wheel design.
- Riveted axle for positive wheel retention, (4" & 5").



IDEALLY SUITED FOR:
STORE FIXTURES, DISPLAYS, MEDICAL EQUIPMENT,
UTILITY CARTS, FURNITURE AND OFFICE EQUIPMENT.

Swivel Top Plate Models:

Without Brake

Wheel Diameter	Part #	Load Capacity	Mounting Height	Swivel Radius	Top Portion	Pcs. Per Carton
1-1/2"	MML2-1	65 lbs.	2"	1-1/4"	Top Plate: 1-1/2" Sq. Mounting Hole: 1" x 1" Spacing	120
2"	MML3-1	88 lbs.	2-7/16"	1-3/4"		120
3"	MM35-1	150 lbs.	3-7/16"	2-1/2"		120
4"	MML4-1	175 lbs.	4-5/8"	3-5/8"	Top Plate: 2-5/8" x 3-3/4" Mounting Hole: 1-3/4" x 2-3/4 to 3" Spacing	40
5"	MML5-1	180 lbs.	5-5/8"	4-1/2"		20

With Brake

Wheel Diameter	Part #	Load Capacity	Mounting Height	Swivel Radius	Top Portion	Pcs. Per Carton
2"	MML3BR-1	88 lbs.	2-7/16"	2-1/8"	Top Plate: 1-1/2" Sq. Mounting Hole: 1" x 1" Spacing	120
3"	MM35BR-1	150 lbs.	3-7/16"	3-1/8"		120
4"	MML4BR-1	175 lbs.	4-5/8"	4-1/2"	Top Plate: 2-5/8" x 3-3/4" Mounting Hole: 1-3/4" x 2-3/4 to 3" Spacing	40
5"	MML5BR-1	180 lbs.	5-5/8"	5-1/8"		20

Threaded Stem Models:

Without Brake

Wheel Diameter	Part #	Load Capacity	Mounting Height	Swivel Radius	Top Portion	Pcs. Per Carton
1-1/2"	MML2-6	50 lbs.	2"	1-1/2"	5/16-18 x 3/4" Long	120
2"	MML3-6	88 lbs.	2-1/4"	1-3/4"	5/16-18 x 3/4" Long	120
3"	MM35-10	150 lbs.	3-1/4"	2-1/2"	3/8-16 x 1" Long	120
4"	MML4-10	175 lbs.	4-3/8"	3-5/8"	3/8-16 x 1" Long	40
5"	MML5-18	180 lbs.	5-7/16"	4-1/2"	1/2-13 x 1" Long	20

With Brake

Wheel Diameter	Part #	Load Capacity	Mounting Height	Swivel Radius	Top Portion	Pcs. Per Carton
2"	MML3BR-6	88 lbs.	2-1/4"	2-1/8"	5/16-18 x 3/4" Long	120
3"	MM35BR-10	150 lbs.	3-1/4"	3-1/8"	3/8-16 x 1" Long	120
4"	MML4BR-10	175 lbs.	4-3/8"	4-1/2"	3/8-16 x 1" Long	40
5"	MML5BR-18	180 lbs.	5-7/16"	5-1/8"	1/2-13 x 1" Long	20

Friction Ring Stem Models:

Wheel Diameter	Part #	Load Capacity	Mounting Height	Swivel Radius	Top Portion	Pcs. Per Carton
2"	MML3-13	88 lbs.	2-1/4"	1-3/4"	7/16 x 7/8" Friction Ring Stem	120
	MML3BR-13			2-1/8"	7/16 x 7/8" Friction Ring Stem w/ Brake	

SEE PAGE E-19 FOR METAL THREADED INSERTS AND PAGES E-17~18 FOR METAL THREADED STARTYPES
OTHER TOP FITTINGS AVAILABLE, PLEASE INQUIRE



**CLICK PART#
TO VIEW PRODUCT**

Black Non-Hooded Diecast Twin Wheels

- Rounded nylon wheels with zinc diecast body provides a greater load rating than typical 2" twin wheels.
- Exceeds ANSI/BIFMA test requirements.



***IDEALLY SUITED FOR:
STORE FIXTURES, DISPLAYS, ELECTRONIC EQUIPMENT,
MEDICAL EQUIPMENT AND OFFICE EQUIPMENT.***

Swivel Top Plate Models:

Wheel Diameter	Part #	Load Capacity	Mounting Height	Swivel Radius	Top Portion	Mounting Holes	Pcs. Per Carton
2"	MM3-1 MM3BR-1	110 lbs.	2-11/32"	1-3/4" 2-1/8"	1-1/2" Square Top Plate 1-1/2" Square Top Plate w/ Brake	1" x 1" Spacing	120

Threaded Stem Models:

Wheel Diameter	Part #	Load Capacity	Mounting Height	Swivel Radius	Top Portion	Pcs. Per Carton
2"	MM3-6 MM3-10	110 lbs.	2-3/16"	1-3/4"	5/16-18 x 3/4" Long 3/8-16 x 1" Long	120
2"	MM3BR-6 MM3BR-10	110 lbs.	2-3/16"	2-1/8"	5/16-18 x 3/4" Long w/ Brake 3/8-16 x 1" Long w/ Brake	120

Friction Ring Stem Models:

Wheel Diameter	Part #	Load Capacity	Mounting Height	Swivel Radius	Top Portion	Pcs. Per Carton
2"	MM3-13 MM3BR-13	110 lbs.	2-3/16"	1-3/4" 2-1/8"	7/16" x 7/8" Friction Ring Stem 7/16" x 7/8" Friction Ring Stem w/ Brake	120



- 100% Nylon body construction
- Perfect for office chair replacements
- Meets or exceeds ANSI/BIFMA specifications
- Set includes 5 casters



Wheel Diameter	Part #	Load Capacity	Mounting Height	Swivel Radius	Top Portion
2"	EWTC-50-BK	250 lbs. per set of 5	2-3/16"	1-3/4"	7/16" x 7/8" Friction Ring Stem 38mm Euro Style Neck Diameter

**SEE PAGE E-19 FOR METAL THREADED INSERTS AND PAGES E-17~18 FOR METAL THREADED STARTYPES
OTHER TOP FITTINGS AVAILABLE, PLEASE INQUIRE**

Phone: 1-800-631-8375 • Fax: 1-800-888-3315

1-1/2" Diameter x 2" Wide (Nominal)

IDEALLY SUITED FOR:

**MEDICAL EQUIPMENT, STORE FIXTURES, DISPLAYS,
OFFICE EQUIPMENT, AND ELECTRONIC EQUIPMENT.**

- Housing & wheels are 1st class polyamide with special soft tread of polyurethane which provide a cushioned ride and quiet operation.
- Low profile and easy to conceal.
- High load rating provides great strength.



With Brake

Top Plate Models:

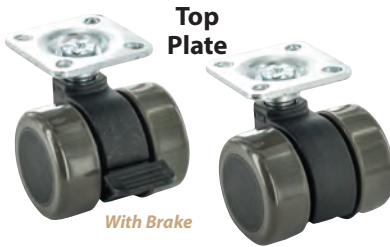
Wheel Diameter	Part #	Load Capacity	Mounting Height	Swivel Radius	Description
1-1/2" x 2" Wide	MMW2-1	90 lbs.	1-3/4"	1-11/16"	1-1/2" Dia. Mity Mite Wide Twinwheel. 1-1/2" Sq. Top Plate w/1" Sq. Mounting Hole - Black
	MMW2BR-1	90 lbs.	1-3/4"	1-11/16"	1-1/2" Dia. Mity Mite Wide Twinwheel w/Brake. 1-1/2" Sq. Top Plate w/1" Sq. Mounting Hole - Black



With Brake

Threaded Stem Models:

Wheel Diameter	Part #	Load Capacity	Mounting Height	Swivel Radius	Description
1-1/2" x 2" Wide	MMW2-6	90 lbs.	1-5/8"	1-11/16"	1-1/2" Dia. Mity Mite Wide Twinwheel. 5/16-18 x 5/8" Long Threaded Stem - Black
	MMW2BR-6	90 lbs.	1-5/8"	1-11/16"	1-1/2" Dia. Mity Mite Wide Twinwheel w/Brake. 5/16-18 x 5/8" Long Threaded Stem w/Brake - Black

...AND IF YOU NEED A HEAVIER LOAD CAPACITY

With Brake

Top Plate Models:

Wheel Diameter	Part #	Load Capacity	Mounting Height	Swivel Radius	Description
1-1/2" x 2" Wide	MMW2X-1	150 lbs.	2.05"	1.85"	1-1/2" Dia. Mity Mite Wide Twinwheel. 1-1/2" Sq. Top Plate w/1" Sq. Mounting Hole. Black housing & wheels with a grey soft polyurethane tread.
	MMW2XBR-1	150 lbs.	2.05"	1.85"	1-1/2" Dia. Mity Mite Wide Twinwheel w/Brake. 1-1/2" Sq. Top Plate w/1" Sq. Mounting Hole. Black housing & wheels with a grey soft polyurethane tread.

Threaded Stem Models:

Wheel Diameter	Part #	Load Capacity	Mounting Height	Swivel Radius	Description
1-1/2" x 2" Wide	MMW2X-6	150 lbs.	1-7/8"	1.85"	1-1/2" Dia. Mity Mite Wide Twinwheel. 5/16-18 x 5/8" Long Threaded Stem. Black housing & wheels with a grey soft polyurethane tread.
	MMW2XBR-6	150 lbs.	1-7/8"	1.85"	1-1/2" Dia. Mity Mite Wide Twinwheel w/Brake. 5/16-18 x 5/8" Long Threaded Stem w/Brake. Black housing & wheels with a grey soft polyurethane tread.

"No-Noise" Friction Ring Stem Models:

Wheel Diameter	Part #	Load Capacity	Mounting Height	Swivel Radius	Description
1-1/2" x 2" Wide	MMW2X-13	150 lbs.	1-3/4"	1.85"	1-1/2" Dia. Mity Mite Wide Twinwheel. 7/16 x 3/4" "No-Noise" Friction Ring Stem. Black housing & wheels with a grey soft polyurethane tread.
	MMW2XBR-13	150 lbs.	1-7/8"	1.85"	1-1/2" Dia. Mity Mite Wide Twinwheel w/Brake. 7/16 x 3/4" "No-Noise" Friction Ring Stem. Black housing & wheels with a grey soft polyurethane tread.

**SEE PAGE E-19 FOR METAL THREADED INSERTS AND PAGES E-17~18 FOR METAL THREADED STARTYPES
OTHER TOP FITTINGS AVAILABLE, PLEASE INQUIRE**



**CLICK PART #
TO VIEW PRODUCT**

Institutional Twin Wheels

Softech



**Threaded
Stem**



**Friction
Ring Stem**



- Soft tread gray thermoplastic elastomer twin wheel provides a quiet cushioned ride.
- This 2-toned gray twin wheel provides an attractive and stylish look while supporting a heavy load.
- Ideal for all hospital/medical equipment and furniture or wherever you want style and strength.

Without Brake

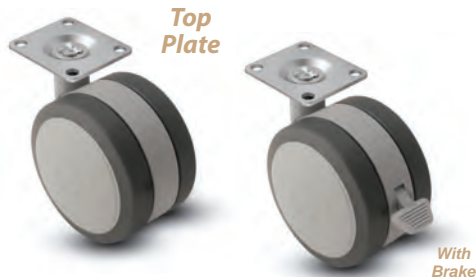
Wheel Diameter	Part #	Load Capacity	Mounting Height	Swivel Radius	Top Portion	Mounting Hole Spacing	Pcs. Per Carton
2"	MMI2-10	75 lbs.	2-1/4"	1-13/16"	3/8-16 x 1" Threaded Stem	-	100
	MMI2-13		2-1/4"		7/16 x 7/8" Friction Ring Stem	-	
	MMI2-1		2-3/8"		1-1/2" Square Top Plate	1" x 1"	
2-3/8"	MMI28-10	100 lbs.	2-5/8"	2-1/16"	3/8-16 x 1" Threaded Stem	-	100
	MMI28-13		2-5/8"		7/16 x 7/8" Friction Ring Stem	-	
	MMI28-1		2-3/4"		1-1/2" Square Top Plate	1" x 1"	

With Brake

Wheel Diameter	Part #	Load Capacity	Mounting Height	Swivel Radius	Top Portion	Mounting Hole Spacing	Pcs. Per Carton
2"	MMI2BR-10	75 lbs.	2-1/4"	2-3/8"	3/8-16 x 1" Threaded Stem	-	100
	MMI2BR-13		2-1/4"		7/16 x 7/8" Friction Ring Stem	-	
	MMI2BR-1		2-3/8"		1-1/2" Square Top Plate	1" x 1"	
2-3/8"	MMI28BR-10	100 lbs.	2-5/8"	2-1/2"	3/8-16 x 1" Threaded Stem	-	100
	MMI28BR-13		2-5/8"		7/16 x 7/8" Friction Ring Stem	-	
	MMI28BR-1		2-3/4"		1-1/2" Square Top Plate	1" x 1"	



Total Locking Soft Ride



- Gray soft polyurethane tread with nylon construction provides a quiet and cushioned ride.
- Total locking brake option will securely lock the wheel and top portion when engaged.
- Sleek design and superior mobility rating - Best on the market!
- Ideal for electronic equipment, medical equipment, store fixtures and furniture.



Without Brake

Wheel Diameter	Part #	Load Capacity	Mounting Height	Swivel Radius	Top Portion	Mounting Hole Spacing	Pcs. Per Carton
3"	MMI35-1	175 lbs.	3-7/8"	2-1/4"	2-3/4" x 2-5/16" Top Plate	1-21/32" x 2-5/32"	120
	MMI35-18		3-9/16"		1/2"-13 x 1" Long Threaded Stem	-	
4"	MMI4-1	220 lbs.	5-1/4"	3-1/16"	2-3/4" x 2-5/16" Top Plate	1-3/4" x 2-29/32"	120
	MMI4-18		5"		1/2"-13 x 1" Long Threaded Stem	-	

With Brake

Wheel Diameter	Part #	Load Capacity	Mounting Height	Swivel Radius	Top Portion	Mounting Hole Spacing	Pcs. Per Carton
3"	MMI35BR-1	175 lbs.	3-7/8"	2-7/8"	2-3/4" x 2-5/16" Top Plate	1-21/32" x 2-5/32"	120
	MMI35BR-18		3-9/16"		1/2"-13 x 1" Long Threaded Stem	-	
4"	MMI4BR-1	220 lbs.	5-1/4"	3-3/4"	2-3/4" x 2-5/16" Top Plate	1-3/4" x 2-29/32"	120
	MMI4BR-18		5"		1/2"-13 x 1" Long Threaded Stem	-	

**SEE PAGE E-19 FOR METAL THREADED INSERTS AND PAGES E-17~18 FOR METAL THREADED STARTYPES
OTHER TOP FITTINGS AVAILABLE, PLEASE INQUIRE**

Phone:1-800-631-8375 • Fax:1-800-888-3315

The X-Caster

2" Dual Wheels

- Designed specifically for the retail display industry
- Strongest composite caster on the market
- The X-Caster has a higher load capacity than twin wheel casters.
- Wide variety of top fittings and wheel materials available
- Exclusively from the Jacob Holtz Company



Top
Plate

205-2XPU-04-WB



1" Long
Threaded Stem

205-2XPP-27-WB



1-1/2" Long
Threaded Stem

205-2XPU-24



Friction
Ring Stem

205-2XPU-61

Wheel Dia.	Wheel Material	Tread Width	Mounting Height	Swivel Radius	Load Capacity Per Caster	Top Fitting	Swivel Part #	Swivel w/Brake Part #
2"	Black Polypropylene	3/4" x 2"	2-45/64"	1-27/32"	150 lbs.	1-1/4" x 2" Top Plate	205-2XPP-04	205-2XPP-04-WB
2"	Black Polypropylene	3/4" x 2"	2-45/64"	1-27/32"	150 lbs.	5/16-18 x 1-1/2" Threaded Stem	205-2XPP-24	205-2XPP-24-WB
2"	Black Polypropylene	3/4" x 2"	2-45/64"	1-27/32"	150 lbs.	3/8-16 x 1" Threaded Stem	205-2XPP-27	205-2XPP-27-WB
2"	Black Polypropylene	3/4" x 2"	2-45/64"	1-27/32"	150 lbs.	7/16" x 1-1/2" Friction Ring Stem	205-2XPP-61	205-2XPP-61-WB
2"	Grey Polyurethane on Black Polypropylene Core	3/4" x 2"	2-45/64"	1-27/32"	150 lbs.	1-1/4" x 2" Top Plate	205-2XPU-04	205-2XPU-04-WB
2"	Grey Polyurethane on Black Polypropylene Core	3/4" x 2"	2-45/64"	1-27/32"	150 lbs.	5/16-18 x 1-1/2" Threaded Stem	205-2XPU-24	205-2XPU-24-WB
2"	Grey Polyurethane on Black Polypropylene Core	3/4" x 2"	2-45/64"	1-27/32"	150 lbs.	3/8-16 x 1" Threaded Stem	205-2XPU-27	205-2XPU-27-WB
2"	Grey Polyurethane on Black Polypropylene Core	3/4" x 2"	2-45/64"	1-27/32"	150 lbs.	7/16" x 1-1/2" Friction Ring Stem	205-2XPU-61	205-2XPU-61-WB

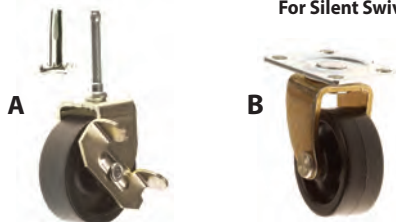
High Impact Styrene Wheel Casters

With 5/16" x 1-1/2"
Long Socket Stems

- Brass
- Dependable
- Long Lasting
- Sturdy
- Economical
- Black Wheels
- Supplied With Metal Sockets



- Black
- Dupont Nylon Thrust Bearing For Silent Swivel Action



Part #	Finish	Description
A 231-71-2WB	Brass	2" Dia. x 3/4" Wide w/Brake 45 lbs. Load Capacity
B 161-71-T.P.	Brass w/ Black Wheel	1-5/8" Dia. x 5/8" Wide 35 lbs. Load Capacity

Dual Wheel Appliance Caster

Designed for rolling refrigerators, dishwashers and other heavy appliances in the home or office.

Specifications:

Wheel Size: 7/8" Dia. x 1-1/2" Wide

Rig Dimensions: 1-3/4"L x 1-1/2"W x 1-1/8"H

Color: White Only

Material: Polypropylene

Load Rating: 800 lbs. per set of 4

Mounting Height: 1-5/16"

Top Portion: 5/16-18 x 7/8" Long
Threaded Stem w/Hex Nut

Rig: Heavy Duty Zinc Plated Steel



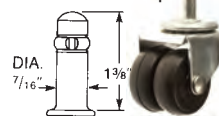
#APL78

Dual Wheel Casters

- 2" Dia. x 7/8" Wide
- Load Capacity: 160 lbs. to 200 lbs.
- Zinc Finish
- Ruberex & Polypropylene Wheels

EW459-2**Bore Dimension:**

29/64" Dia. x 1-9/16" Deep

**EP459-2**

Top Plate: 2-9/16" x 3-5/8"

Bolt Holes: 1-3/4" x 2-7/8" to 3"

**EP659-2**

Top Plate: 2-9/16" x 3-5/8"

Bolt Holes: 1-3/4" x 2-7/8" to 3"



Part #	Wheel Material	Load Capacity Per Caster	Mounting Height
EW459-2	Ruberex	160 lbs.	2-23/32"
EP459-2	Ruberex	160 lbs.	2-27/32"
EP659-2	Polypropylene	200 lbs.	2-27/32"

Solid Brass Casters

Square Cup



Wheel Diameter: 1.46"
Cup I.D.: Tapers from 1-1/8" to 1"
Cup Height is 1.63"



Part # **BSC-48-BC** Finish **Brushed Chrome**

Low Profile Spring Cup Caster

Ideal For: Display counters, T.V. stands, furniture, kitchen counters and islands.



- Super Load Capacity: 165 lbs. per caster.

- Recessed Mounting Design: Drill a 3-3/8" diameter hole with a depth of 3/4".

- Easy Installation: Push the spring cup caster into the hole until it is flush with mounting flange.

- Metal teeth mesh with the wood, particle board or other material. For extra security, there are 3 holes for screws.



Caster is recessed

#LPSC-75N

Specifications:

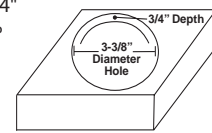
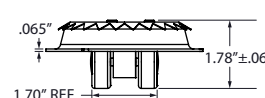
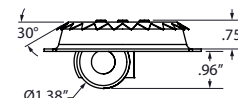
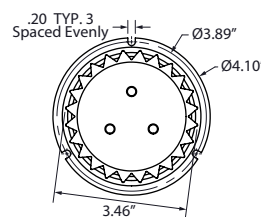
Overall Height: 1.78"

Wheel Material: Nylon

Overall Rim Diameter: 4-3/32"

Insert Dimension: 3/4"

Turning Radius: 360°



"The Floater"

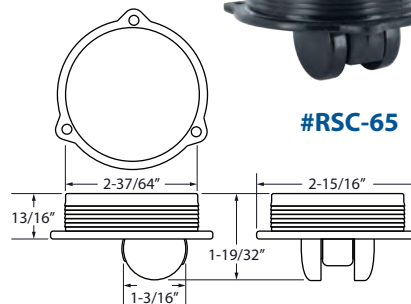
Recessed Swivel Caster



- Material: Black Nylon
- Load Capacity: 110 lbs. per caster
- Wheel Diameter: 1-3/16"
- Drill Hole Size: 2-37/64"
- Cap Size: 2-1/4"



#RSC-65



1-1/2" & 2" Hooded
Brite Chrome or Antique Brass Finish • 4 Top Portions Available

Medallion



Shown:
Brite Chrome



Shown:
1 1/2" TPR Wheel

Wheel Diameter	Part #	Finish	Load Capacity Set Of 4	Mounting Height	Top Portion	Sets Per Carton
1-1/2"	MEDALLION-40CHR	Brite Chrome	300 lbs.	2-1/4"	2" x 1-3/16"	25
	MEDALLION-40BRS	Antique Brass		2-1/4"	Rectangular Top Plate, with 1-5/8" x 7/8" Bolt Holes	
2"	MEDALLION-CHR	Brite Chrome	400 lbs.	2-5/8"		
	MEDALLION-BRS	Antique Brass		2-5/8"		
1-1/2"	MEDALLION-T-40CHR	Grey/Black TPR Ball w/ Chrome Hood	352 lbs.	2-1/4"	1-1/2" Square Top Plate, 1-1/8" Hole Spacing, 13/64" Hole Diameter	25
2"	MEDALLION-T-CHR		528 lbs.	2-3/8"		

Neptune



Shown:
Antique Brass

Wheel Diameter	Part #	Finish	Load Capacity Set Of 4	Mounting Height	Top Portion	Sets Per Carton
1-1/2"	NEPTUNE-40CHR	Brite Chrome	300 lbs.	2-3/16"	7/16" x 1-3/8" Long Friction Ring Stem	25
	NEPTUNE-40BRS	Antique Brass		2-3/16"		
2"	NEPTUNE-CHR	Brite Chrome	400 lbs.	2-1/2"		
	NEPTUNE-BRS	Antique Brass		2-1/2"		

Regency



Shown:
Antique Brass

Wheel Diameter	Part #	Finish	Load Capacity Set Of 4	Mounting Height	Top Portion	Sets Per Carton
1-1/2"	REGENCY-40CHR	Brite Chrome	300 lbs.	2-1/8"	5/16" x 1-1/2" Long Gripneck Stem With Metal Sockets	25
	REGENCY-40BRS	Antique Brass		2-1/8"		
2"	REGENCY-CHR	Brite Chrome	400 lbs.	2-1/2"		
	REGENCY-BRS	Antique Brass		2-1/2"		

Magnum



Shown:
Brite Chrome

Wheel Diameter	Part #	Finish	Load Capacity Set Of 4	Mounting Height	Top Portion	Sets Per Carton
1-1/2"	MAGNUM-40CHR	Brite Chrome	300 lbs.	2-1/4"	5/16-18 x 1" Long Threaded Stem	25
	MAGNUM-40BRS	Antique Brass		2-1/4"		
2"	MAGNUM-CHR	Brite Chrome	400 lbs.	2-1/2"		
	MAGNUM-BRS	Antique Brass		2-1/2"		



Satellite Series Metal Ball Casters

50MM Metal

Brite Brass, Brite Chrome, Satin Chrome or Windsor Antique Finish • 3 Top Portions Available

Malibu



Shown:
Brite Chrome

Part #	Finish	Load Capacity Per Pc.	Mounting Height	Top Portion
MALIBU-BB	Brite Brass	75 lbs.	2-3/16"	5/16" x 1-1/2" Long Gripneck Stem Supplied With Gripneck Sleeves
MALIBU-BC	Brite Chrome			
MALIBU-SC	Satin Chrome			
MALIBU-WA	Windsor Antique			

Madrid



Shown:
Windsor Antique

Part #	Finish	Load Capacity Per Pc.	Mounting Height	Top Portion
MADRID-BB	Brite Brass	75 lbs.	2-1/2"	1-1/2"
MADRID-BC	Brite Chrome			Square Top Plate, with 1" x 1" Bolt Holes
MADRID-SC	Satin Chrome			
MADRID-WA	Windsor Antique			

Milan



Shown:
Brite Brass

Part #	Finish	Load Capacity Per Pc.	Mounting Height	Top Portion
MILAN-BB	Brite Brass	75 lbs.	2-5/16"	5/16" x 1" Long Threaded Stem
MILAN-BC	Brite Chrome			
MILAN-SC	Satin Chrome			
MILAN-WA	Windsor Antique			

Ball Casters *Combine the Low-Profile, Omni-Directional and Load Capacity benefits of Ball Transfers with the Utility of Traditional Casters*

Applications include Retail or Point of Sale Displays, Furniture, Computer or Restaurant Equipment, Warehouse Racking or the Hospitality needs, almost anywhere you will need full mobility

EZ Swivel Radius

Super Low Profile



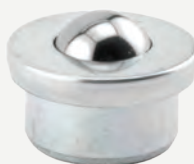
3 Types



Flange



Threaded Stud Mounted



Drop-In

Ball Options

White Nylon



Non-marring

Carbon Steel



Strength with Cost Effectiveness

Stainless Steel



Corrosion Resistant

Phenolic



Special Order Please Inquire



Click Here

Ball Up

Ball Down



VS



Traditionally used on conveyor systems, load rating is highest in this position

A low profile option with omni-directional movement

Carbon Steel is standard for housing material but Stainless Steel with Stainless Steel ball is available - please inquire

See pages E-36~37

Super Mover & Hudson Hauler



Now you can move heavy equipment and store fixtures with ease!



Heavy Load Dolly

Simplify moving everything from heavy equipment to shelving units with the Hudson Hauler and the Hudson Super Mover. Their low profile design minimizes required lift while allowing for easy omni-directional movement.

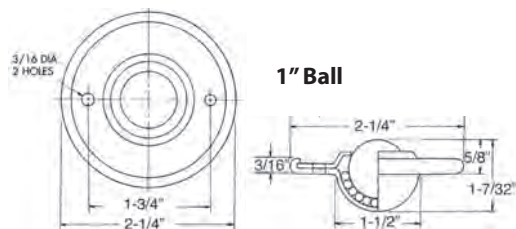
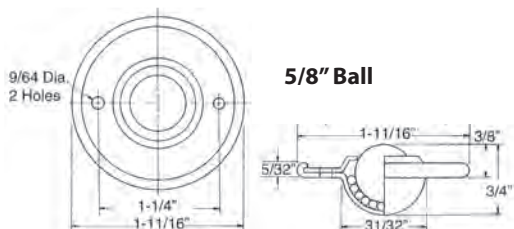
See page E-38



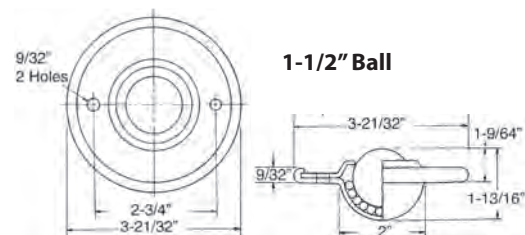
Click Here

Flange Mounted Casters

Round Flange

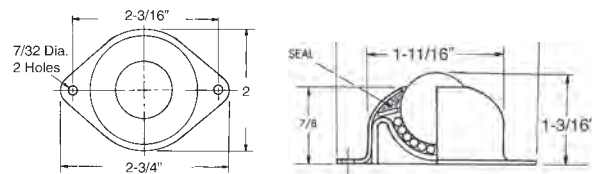


Part #	Ball Material	Housing Material	Ball Size	Load Rating	
				Ball Up	Ball Down
HBCCRF-20	Carbon Steel	Carbon Steel	5/8"	20 lbs.	10 lbs.
HNBCRF-20	Nylon	Carbon Steel	5/8"	20 lbs.	10 lbs.
HSSBCRF-20	Stainless Steel	Carbon Steel	5/8"	20 lbs.	10 lbs.
HBCCRF-32	Carbon Steel	Carbon Steel	1"	75 lbs.	35 lbs.
HNBCRF-32	Nylon	Carbon Steel	1"	75 lbs.	35 lbs.
HSSBCRF-32	Stainless Steel	Carbon Steel	1"	75 lbs.	35 lbs.
HBCCRF-48	Carbon Steel	Carbon Steel	1-1/2"	200 lbs.	100 lbs.
HNBCRF-48	Nylon	Carbon Steel	1-1/2"	200 lbs.	100 lbs.
HSSBCRF-48	Stainless Steel	Carbon Steel	1-1/2"	200 lbs.	100 lbs.



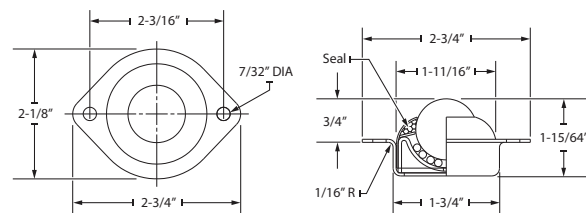
Oblong Flange

Part #	Ball Material	Housing Material	Ball Size	Load Rating	
				Ball Up	Ball Down
HBCOF-32	Carbon Steel	Carbon Steel	1"	75 lbs.	35 lbs.
HNBCOF-32	Nylon	Carbon Steel	1"	75 lbs.	35 lbs.
HSSBCOF-32	Stainless Steel	Carbon Steel	1"	75 lbs.	35 lbs.



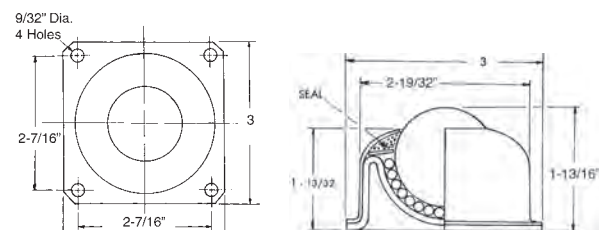
Low Profile Oblong Flange

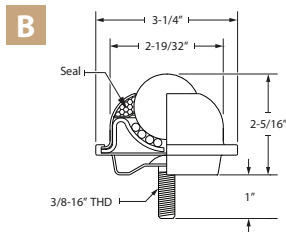
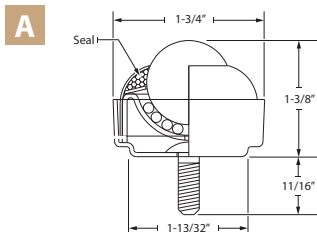
Part #	Ball Material	Housing Material	Ball Size	Load Rating	
				Ball Up	Ball Down
HLBPOF-32	Carbon Steel	Carbon Steel	1"	75 lbs.	35 lbs.
HNBLPOF-32	Nylon	Carbon Steel	1"	75 lbs.	35 lbs.
HSSBLPOF-32	Stainless Steel	Carbon Steel	1"	75 lbs.	35 lbs.



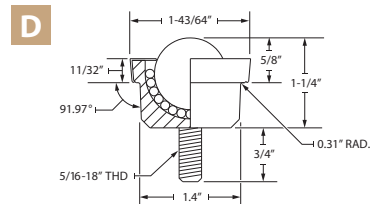
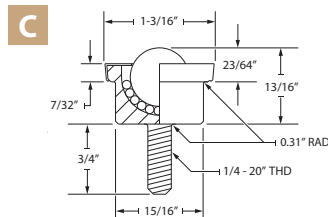
Square Flange

Part #	Ball Material	Housing Material	Ball Size	Load Rating	
				Ball Up	Ball Down
HBSCF-48	Carbon Steel	Carbon Steel	1-1/2"	250 lbs.	125 lbs.
HNBCSF-48	Nylon	Carbon Steel	1-1/2"	250 lbs.	125 lbs.
HSSBCSF-48	Stainless Steel	Carbon Steel	1-1/2"	250 lbs.	125 lbs.





*Available w/noise reducing cushion. Please Inquire.

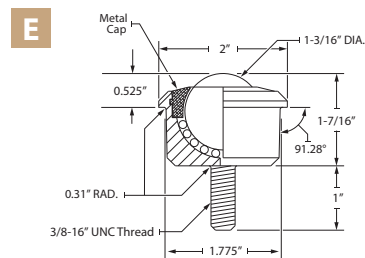


*Brake option available. Please Inquire.

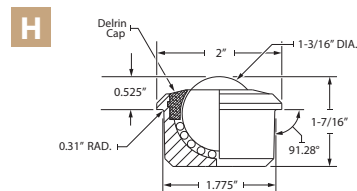
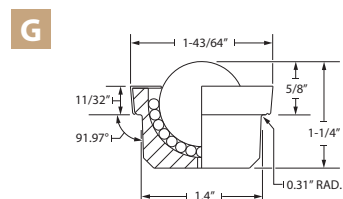
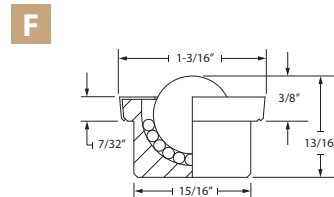
Threaded Stud Mounted Casters



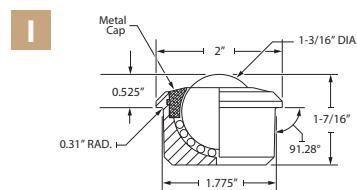
	Part #	Ball Material	Housing Material	Ball Size	Load Rating		Thread Size
					Ball Up	Ball Down	
A	HBSBT32-4	Carbon Steel	Carbon Steel	1"	75 lbs.	35 lbs.	1/4-20 x 1"
	HNBSBT32-4	Nylon	Carbon Steel	1"	75 lbs.	35 lbs.	1/4-20 x 1"
	HSSBSBT32-4	Stainless Steel	Carbon Steel	1"	75 lbs.	35 lbs.	1/4-20 x 1"
	HBSBT32-7	Carbon Steel	Carbon Steel	1"	75 lbs.	35 lbs.	5/16-18 x 1"
	HNBSBT32-7	Nylon	Carbon Steel	1"	75 lbs.	35 lbs.	5/16-18 x 1"
	HSSBSBT32-7	Stainless Steel	Carbon Steel	1"	75 lbs.	35 lbs.	5/16-18 x 1"
	HBSBT32-10	Carbon Steel	Carbon Steel	1"	75 lbs.	35 lbs.	3/8-16 x 1"
B	HNBSBT32-10	Nylon	Carbon Steel	1"	75 lbs.	35 lbs.	3/8-16 x 1"
	HSSBSBT32-10	Stainless Steel	Carbon Steel	1"	75 lbs.	35 lbs.	3/8-16 x 1"
	HBSBT48-10	Carbon Steel	Carbon Steel	1-1/2"	250 lbs.	125 lbs.	3/8-16 x 1"
C	HNBSBT48-10	Nylon	Carbon Steel	1-1/2"	250 lbs.	125 lbs.	3/8-16 x 1"
	HSSBSBT48-10	Stainless Steel	Carbon Steel	1-1/2"	250 lbs.	125 lbs.	3/8-16 x 1"
	HBSMBT20-4	Carbon Steel	Carbon Steel	5/8"	33 lbs.	16 lbs.	1/4-20 x 1"
D	HNBSMBT20-4	Nylon	Carbon Steel	5/8"	33 lbs.	16 lbs.	1/4-20 x 1"
	HSSBSMBT20-4	Stainless Steel	Carbon Steel	5/8"	33 lbs.	16 lbs.	1/4-20 x 1"
	HBSMBT32-7	Carbon Steel	Carbon Steel	1"	200 lbs.	100 lbs.	5/16-18 x 1"
E	HNBSMBT32-7	Nylon	Carbon Steel	1"	200 lbs.	100 lbs.	5/16-18 x 1"
	HSSBSMBT32-7	Stainless Steel	Carbon Steel	1"	200 lbs.	100 lbs.	5/16-18 x 1"
	HBSHDBT48-10	Carbon Steel	Carbon Steel	1-3/16"	750 lbs.	375 lbs.	3/8-16 x 1"
	HNBSHDBT48-10	Stainless Steel	Carbon Steel	1-3/16"	750 lbs.	375 lbs.	3/8-16 x 1"



Heavy Duty



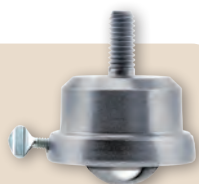
Heavy Duty



Heavy Duty

Brake Option

Special order and available with the threaded stud mounted casters - please inquire



Shown: HBSMBT32-7-BRK



Drop-In Caster/Transfers

	Part #	Ball Material	Housing Material	Ball Size	Load Rating	
					Ball Up	Ball Down
F	HBMBT-20	Carbon Steel	Carbon Steel	5/8"	33 lbs.	16 lbs.
	HBNMBT-20	Nylon	Carbon Steel	5/8"	33 lbs.	16 lbs.
	HSSMBT-20	Stainless Steel	Carbon Steel	5/8"	33 lbs.	16 lbs.
G	HBMBT-32	Carbon Steel	Carbon Steel	1"	200 lbs.	100 lbs.
	HBNMBT-32	Nylon	Carbon Steel	1"	200 lbs.	100 lbs.
	HSSMBT-32	Stainless Steel	Carbon Steel	1"	200 lbs.	100 lbs.
H	HBHDBT-56	Carbon Steel	Carbon Steel	1-3/16"	500 lbs.	250 lbs.
	HSSHDBT-56	Stainless Steel	Carbon Steel	1-3/16"	500 lbs.	250 lbs.
	HBHDBTM-56	Carbon Steel	Carbon Steel	1-3/16"	750 lbs.	375 lbs.
I	HSSHDBTM-56	Stainless Steel	Carbon Steel	1-3/16"	750 lbs.	375 lbs.



CLICK PART# TO VIEW PRODUCT

Heavy Duty Dollies

Super Mover & Hudson Hauler

Now you can move heavy equipment and store fixtures with ease!

- Manufactured in the USA
- Accommodates leg mounted or flat fixtures
- Utilizes Hudson Bearings Heavy Duty Ball Transfers with stainless steel main and support balls
- Neoprene surface
- Made from 6061 aluminum



Top

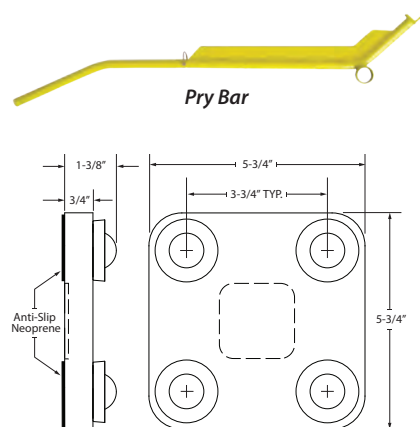


Bottom

Super Mover (500 lbs.)

Ball Material: Stainless Steel
Housing Material: 6061 Aluminum
Weight: Less than 5 Lbs.
Dimensions: 5 3/4" x 5 3/4" x 1 3/8"
Ball Size: 1"
Load Rating (Ball Down): 500 Lbs.

Case
(fits 4)



Part #	Description
HB-SUP	Hudson Super Mover (1)
HB-SUP-SET	Hudson Super Mover (4) and Case
HB-SUP-DLX	Hudson Super Mover (4), Case and Pry Bar
4-PACK-CASE	
12-PACK-CASE	
HUDSON-PRY-BAR	



Top

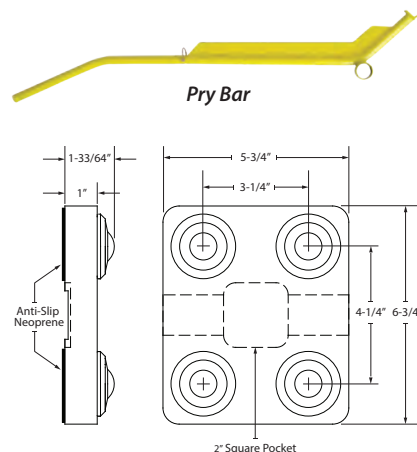


Bottom

Hudson Hauler (2400 lbs.)

Ball Material: Stainless Steel
Housing Material: 6061 Aluminum
Weight: Less than 6 Lbs.
Dimensions: 6 3/4" x 5 3/4" x 1 33/64"
Ball Size: 1 3/16"
Load Rating (Ball Down): 2400 Lbs.

Case
(fits 4)



Part #	Description
HB-HAUL	Hudson Hauler (1)
HB-HAUL-SET	Hudson Hauler (4) and Case
HB-HAUL-DLX	Hudson Hauler (4), Case and Pry Bar
4-PACK-CASE	
12-PACK-CASE	
HUDSON-PRY-BAR	



Polypropylene 2" Diameter Wheels



Single Ball Bearing Raceway • Nickel Finish
Self Lubricating Bearings • Black Polypropylene

Lightweight, yet impact strength is far superior to hard rubber wheels. Offers superior resistance to most oils, chemicals, grease, solvents and acids. For light and medium duty applications.

Temperature Range: -5° F to 150° F

Hardness: 65(±5) Durometer Shore D Scale

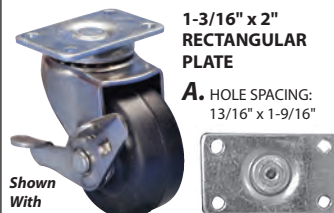
Without Brake

Part #	Top Portion	Wheel Material	Wheel Dia.	Wheel Width	Load Capacity Per Caster	Mounting Height	Swivel Radius	Pieces Per Carton
2IWP-A	A	Polypropylene	2"	13/16"	70 lbs.	2-5/8"	1-7/8"	100
2IWP-B	B					2-9/16"		

With Brake

Part #	Top Portion	Wheel Material	Wheel Dia.	Wheel Width	Load Capacity Per Caster	Mounting Height	Swivel Radius	Pieces Per Carton
2IWP-A-BR	A	Polypropylene	2"	13/16"	70 lbs.	2-5/8"	1-7/8"	100
2IWP-B-BR	B					2-9/16"		

Top Portions Available:



Thermoplastic Rubber (TPR) 1-1/2", 2" Diameter Wheels



Single Ball Bearing Raceway • Nickel Finish
Self Lubricating Bearings • Gray Thermoplastic Rubber

High performance wheel offers the advantage of both hard and soft tread materials in a single wheel. Like a hard tread wheel, TPR rolls easily and is very durable. Like soft tread wheel, it rolls quietly, protects floors and resists impacts with a cushion ride. Non-marking wheel resists chemicals, water, steam, metal shavings and other floor debris. Features maximum weatherability.

Temperature Range: -5° F to 140° F

Hardness: 95(±5) Durometer Shore A Scale

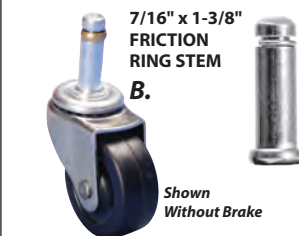
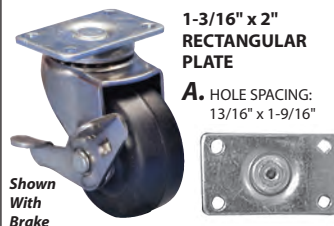
Without Brake

Part #	Top Portion	Wheel Material	Wheel Dia.	Wheel Width	Load Capacity Per Caster	Mounting Height	Swivel Radius	Pieces Per Carton
15IW-A-T	A	Thermoplastic Rubber	1-1/2"	11/16"	70 lbs.	2-5/16"	1-1/2"	100
15IW-B-T	B					2-9/32"		
2IW-A-T	A	Thermoplastic Rubber	2"	3/4"	70 lbs.	2-9/16"	1-7/8"	100
2IW-B-T	B					2-5/8"		

With Brake

Part #	Top Portion	Wheel Material	Wheel Dia.	Wheel Width	Load Capacity Per Caster	Mounting Height	Swivel Radius	Pieces Per Carton
15IW-A-T-BR	A	Thermoplastic Rubber	1-1/2"	11/16"	70 lbs.	2-5/16"	1-13/16"	100
15IW-B-T-BR	B					2-9/32"		
2IW-A-T-BR	A	Thermoplastic Rubber	2"	3/4"	70 lbs.	2-9/16"	1-7/8"	100
2IW-B-T-BR	B					3-3/16"	2-3/16"	

Top Portions Available:





CLICK PART# TO VIEW PRODUCT

Imported Single Wheel Casters

Soft Rubber 2", 2-1/2" & 3" Diameter Wheels

Single Ball Bearing Raceway • Nickel Finish
Self Lubricating Bearings • Black Soft Rubber

Very attractive, all purpose wheel. Easy, quiet roll, resists impacts with a cushioned ride. Features maximum weatherability, resistance to chemicals, water and steam. Rejects floor debris.

Temperature Range: -30° F to 140° F

Hardness: 85(±5) Durometer Shore A Scale



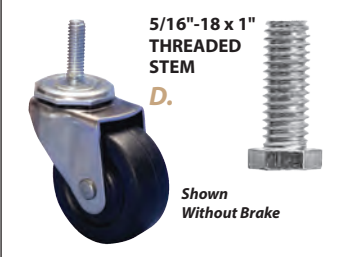
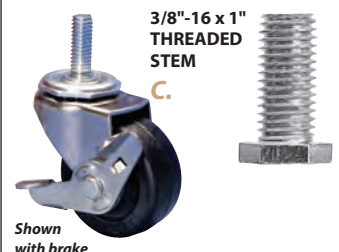
Without Brake

Part #	Top Portion	Wheel Material	Wheel Dia.	Wheel Width	Load Capacity Per Caster	Mounting Height	Swivel Radius	Pieces Per Carton
2IW-A	A	Soft Rubber	2"	13/16"	70 lbs.	2-9/16"	1-7/8"	100
2IW-B	B							
2IW-C	C							
2IW-D	D							
25IW-A	A	Soft Rubber	2-1/2"	13/16"	80 lbs.	3-3/16"	2-3/16"	100
25IW-B	B					3-1/16"		
25IW-C	C					3-1/16"		
25IW-D	D					3-1/16"		
3IW-A	A	Soft Rubber	3"	13/16"	90 lbs.	3-5/8"	2-1/2"	100
3IW-B	B					3-9/16"		
3IW-C	C					3-9/16"		
3IW-D	D					3-9/16"		

With Brake

Part #	Top Portion	Wheel Material	Wheel Dia.	Wheel Width	Load Capacity Per Caster	Mounting Height	Swivel Radius	Pieces Per Carton
2IW-A-BR	A	Soft Rubber	2"	13/16"	70 lbs.	2-9/16"	1-7/8"	100
2IW-B-BR	B					3-1/16"	2-3/16"	
2IW-C-BR	C					2-9/16"	1-7/8"	
2IW-D-BR	D					2-9/16"	1-7/8"	
25IW-A-BR	A	Soft Rubber	2-1/2"	13/16"	80 lbs.	3-3/16"	2-3/16"	100
25IW-B-BR	B					3-1/16"		
25IW-C-BR	C					3-1/16"		
25IW-D-BR	D					3-1/16"		
3IW-A-BR	A	Soft Rubber	3"	13/16"	90 lbs.	3-5/8"	2-1/2"	100
3IW-B-BR	B					3-9/16"		
3IW-C-BR	C					3-9/16"		
3IW-D-BR	D					3-9/16"		

Top Portions Available:





2", 2-1/2", 3", 4" & 5" Diameter Wheels









SUMMIT Single Wheel Casters have been engineered and tested to exceed BIFMA, ANSI & GSA standards. APPLICATIONS: General usage, factories, warehouses, for display racks, dollies, boxes etc. A combination of **STRENGTH** and **DURABILITY**.

A composition rubber wheel combining a soft rubber tread with a hard rubber core for quiet movement. A cushioned ride and maximum floor protection.



- Double ball bearing raceway for long life and a smooth ride.
- Self lubricating bearings.
- Temperature operating range -40°F to 158°F.
- Brite Nickel or Zinc finish.

Top Portions Available

A. 7/16" Dia. x 1" Long	
B. 7/16" Dia. x 1-3/8" Long	
C. 7/16" Dia. x 1-7/8" Long FRICTION RING STEM	
D. 7/16" Straight Stem x 1-7/8" Long STRAIGHT STEM FOR SUMMIT CASTER	
E. 5/16-18 x 3/4" Long	
F. 5/16-18 x 1" Long	
G. 5/16-18 x 1-1/2" Long THREADED STEM	
H. 3/8-16 x 1/2" Long	
I. 3/8-16 x 1-1/2" Long THREADED STEM	
J. 1/2-13 x 1-1/2" Long THREADED STEM	
K. 1-3/16" x 2" TOP PLATE 13/16" x 1-9/16" Hole Spacing	

Top Portion	Part #	Wheel Dia.	Tread Width	Load Capacity Per Caster	Mounting Height	Swivel Radius	Pieces Per Carton
A	390-00-20DC-13-00	2"	1"	75 lbs.	2-9/16"	1-7/8"	80
	390-00-25DC-13-00	2-1/2"	1"	90 lbs.	3-1/16"	2-3/16"	80
	990-00-30DC-23-SD	3"	1"	100 lbs.	3-9/16"	2-1/2"	80
B	390-00-20DD-13-00	2"	1"	75 lbs.	2-9/16"	1-7/8"	80
	390-00-25DD-13-00	2-1/2"	1"	90 lbs.	3-1/16"	2-3/16"	80
	990-00-30DD-23-SD	3"	1"	100 lbs.	3-9/16"	2-1/2"	80
	990-01-31DD-23-SD	3"	1-1/4"	175 lbs.	3-9/16"	2-13/16"	32
	990-01-40DD-23-SD	4"	1"	125 lbs.	4-9/16"	3-3/8"	28
	990-01-41DD-23-SD	4"	1-1/4"	200 lbs.	4-15/16"	3-9/16"	28
	990-01-50DD-23-SD	5"	1"	135 lbs.	5-9/16"	4-1/32"	20
C	990-01-51DD-23-SD	5"	1-1/4"	210 lbs.	5-9/16"	4-5/32"	20
	990-00-30DF-23-SD	3"	1"	100 lbs.	3-9/16"	2-1/2"	80
	990-01-50DF-23-SD	5"	1"	135 lbs.	5-9/16"	4-1/32"	20
D	390-00-20DF-13-PO	2"	1"	75 lbs.	2-9/16"	1-7/8"	80
	390-00-25DF-13-PO	2-1/2"	1"	90 lbs.	3-1/16"	2-3/16"	80
	990-00-30DF-23-PO	3"	1"	100 lbs.	3-9/16"	2-1/2"	80
E	340-00-20BB-13-18	2"	1"	75 lbs.	2-9/16"	1-7/8"	80
	390-00-20BC-13-18	2"	1"	75 lbs.	2-9/16"	1-7/8"	80
	390-00-25BC-13-18	2-1/2"	1"	90 lbs.	3-1/16"	2-3/16"	80
F	990-00-30BC-23-18	3"	1"	100 lbs.	3-9/16"	2-1/2"	80
	340-00-25BE-13-18	2-1/2"	1"	90 lbs.	3-1/16"	2-3/16"	80
	990-00-30BE-23-18	3"	1"	100 lbs.	3-9/16"	2-1/2"	80
G	390-00-20CA-13-16	2"	1"	75 lbs.	2-9/16"	1-7/8"	80
	390-00-25CA-13-16	2-1/2"	1"	90 lbs.	3-1/16"	2-3/16"	80
	990-00-30CA-23-16	3"	1"	100 lbs.	3-9/16"	2-1/2"	80
H	390-00-20CE-13-16	2"	1"	75 lbs.	2-9/16"	1-7/8"	80
	990-00-25CE-13-16	2-1/2"	1"	90 lbs.	3-1/16"	2-3/16"	80
	990-00-30CE-23-16	3"	1"	100 lbs.	3-9/16"	2-1/2"	80
I	990-01-31EE-23-13	3"	1-1/4"	175 lbs.	3-9/16"	2-13/16"	32
	990-01-40EE-23-13	4"	1"	125 lbs.	4-9/16"	3-3/8"	28
	990-01-41EE-23-13	4"	1-1/4"	200 lbs.	4-15/16"	3-9/16"	28
J	990-01-50EE-23-13	5"	1"	135 lbs.	5-9/16"	4-1/32"	20
	990-01-51EE-23-13	5"	1-1/4"	210 lbs.	5-15/16"	4-5/32"	20
	390-00-20TP-13-BO	2"	1"	75 lbs.	2-5/8"	1-7/8"	80
K	390-00-25TP-13-BO	2-1/2"	1"	90 lbs.	3-3/16"	2-3/16"	80
	390-00-30TP-23-BO	3"	1"	100 lbs.	3-5/8"	2-1/2"	80



Medium Duty

- Non-marring gray thermoplastic rubber (TPR) wheel
- Precision ball bearing supports heavier loads
- Full thread guard
- Tread lock brake
- Dual ball bearing raceway
- Zinc plated finish
- 3/8" diameter nut and bolt axle

NSF⁺ Certificate Numbers And Manufacturer Name Available Upon Request.



Shown W/
Side Brake

Top Plate

2-5/8" x 3-3/4" overall with 1-3/4" x 2-3/4" hole spacing for 5/16 bolts

Swivel Part #	Swivel W/Side Brake Part #	Wheel Diameter	Tread Width	Load Capacity Per Caster	Mounting Height	Swivel Radius
NF12-3TP	NF12-3TP-BRK	3"		210 lbs.	4-1/4"	2-7/8"
NF12-4TP	NF12-4TP-BRK	4"	1-1/4"	260 lbs.	5-1/4"	3-3/8"
NF12-5TP	NF12-5TP-BRK	5"		280 lbs.	6-1/4"	3-7/8"



Shown W/
Side Brake

Threaded Stem

1/2 - 13 x 1-1/2" Long

Swivel Part #	Swivel W/Side Brake Part #	Wheel Diameter	Tread Width	Load Capacity Per Caster	Mounting Height	Swivel Radius
NF12-3THR	NF12-3THR-BRK	3"		210 lbs.	4-1/8"	2-7/8"
NF12-4THR	NF12-4THR-BRK	4"	1-1/4"	260 lbs.	5-1/8"	3-3/8"
NF12-5THR	NF12-5THR-BRK	5"		280 lbs.	6-1/8"	3-7/8"



Rubber Adaptor For 1" I.D. Tube

14-18 GA Tubing

Swivel Part #	Swivel W/Side Brake Part #	Wheel Diameter	Tread Width	Load Capacity Per Caster	Mounting Height	Swivel Radius
NF12-3A1	NF12-3A1-BRK	3"		210 lbs.	4-1/8"	2-7/8"
NF12-4A1	NF12-4A1-BRK	4"	1-1/4"	260 lbs.	5-1/8"	3-3/8"
NF12-5A1	NF12-5A1-BRK	5"		280 lbs.	6-1/8"	3-7/8"



Shown W/
Side Brake

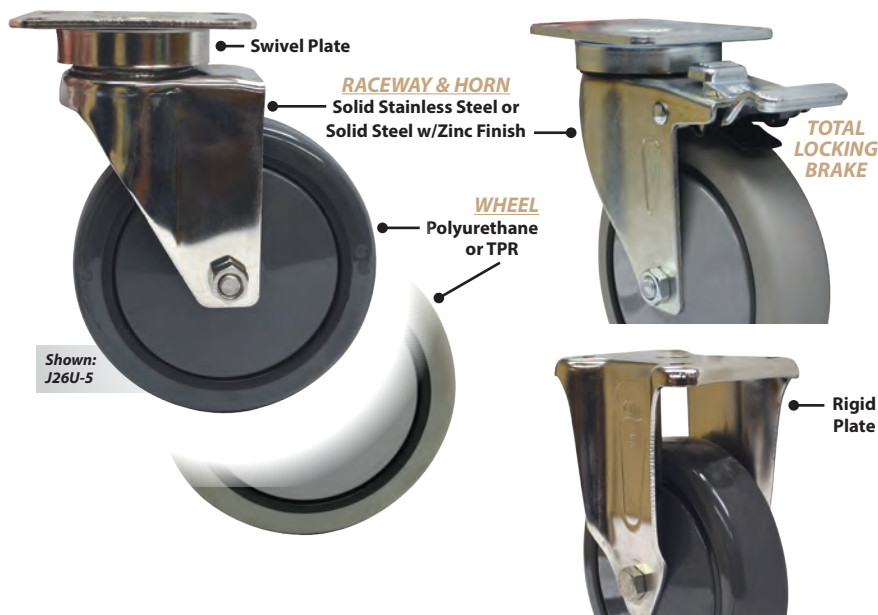
Rubber Adaptor For 1-5/8" I.D. Tube

14-18 GA Tubing

Swivel Part #	Swivel W/Side Brake Part #	Wheel Diameter	Tread Width	Load Capacity Per Caster	Mounting Height	Swivel Radius
NF12-3A2	NF12-3A2-BRK	3"		210 lbs.	4-1/8"	2-7/8"
NF12-4A2	NF12-4A2-BRK	4"	1-1/4"	260 lbs.	5-1/8"	3-3/8"
NF12-5A2	NF12-5A2-BRK	5"		280 lbs.	6-1/8"	3-7/8"

4" & 5" Diameter Wheels

Ideal for industrial, bakery, food service and medical equipment.



- Mounting hole diameter is 11/32" with plate
- Precision ball bearing raceway provides smooth mobility and quiet movement
- Sealed raceway
- Corrosion resistant Stainless Steel or Zinc Finish
- Durable high strength steel
- Tread guards on all precision bearing wheels
- **TPR:** Non-marring grey tread, rugged polypropylene core, Hardness is 70A, Temperature range (-40°F to +180°F)
- **Polyurethane:** PU Tread offers extended wear, Rugged polypropylene core, Hardness is 90A, Temperature range (-40°F to +180°F)
- **Both materials resist chemicals and oils**
- **Both treads are interlocked to avoid separation**

Solid Stainless Steel Precision Raceway Casters

Part #	Wheel Material	Wheel Dia.	Wheel Color	Wheel Bearing	Tread Width	Mounting Height	Swivel Radius	Function	Plate Size	Load Capacity Per Caster	Carton Qty.
J26T-4	TPR	4"	Light Grey	Delrin	1-1/4"	5-7/16"	4-1/8"	Swivel	3-5/8" x 2-7/8"	250 lbs.	20
J26T-4BRK		4"	Tread and Hub	Delrin	1-1/4"	5-7/16"	4-1/8"	Total Locking Brake	3-5/8" x 2-7/8"	250 lbs.	20
J26T-4RG		4"		Delrin	1-1/4"	5-7/16"	4-1/8"	Rigid	4-1/8" x 2-15/16"	250 lbs.	20
J26U-4	Polyurethane	4"	Dark Grey	Delrin	1-1/4"	5-7/16"	4-1/8"	Swivel	3-5/8" x 2-7/8"	300 lbs.	20
J26U-4BRK		4"	Tread and Hub	Delrin	1-1/4"	5-7/16"	4-1/8"	Total Locking Brake	3-5/8" x 2-7/8"	300 lbs.	20
J26U-4RG		4"		Delrin	1-1/4"	5-7/16"	4-1/8"	Rigid	4-1/8" x 2-15/16"	300 lbs.	20
J26T-5	TPR	5"	Light Grey	Delrin	1-1/4"	6-1/2"	4-1/8"	Swivel	3-5/8" x 2-7/8"	300 lbs.	20
J26T-5BRK		5"	Tread and Hub	Delrin	1-1/4"	6-1/2"	4-1/8"	Total Locking Brake	3-5/8" x 2-7/8"	300 lbs.	20
J26T-5RG		5"		Delrin	1-1/4"	6-1/2"	4-1/8"	Rigid	4-1/8" x 2-15/16"	300 lbs.	20
J26U-5	Polyurethane	5"	Dark Grey	Delrin	1-1/4"	6-1/2"	4-1/8"	Swivel	3-5/8" x 2-7/8"	325 lbs.	20
J26U-5BRK		5"	Tread and Hub	Delrin	1-1/4"	6-1/2"	4-1/8"	Total Locking Brake	3-5/8" x 2-7/8"	325 lbs.	20
J26U-5RG		5"		Delrin	1-1/4"	6-1/2"	4-1/8"	Rigid	4-1/8" x 2-15/16"	325 lbs.	20

Solid Steel w/Zinc Finish Precision Raceway Casters

Part #	Wheel Material	Wheel Dia.	Wheel Color	Wheel Bearing	Tread Width	Mounting Height	Swivel Radius	Function	Plate Size	Load Capacity Per Caster	Carton Qty.
A26T-4	TPR	4"	Light Grey	Precision	1-1/4"	5-7/16"	4-1/8"	Swivel	3-5/8" x 2-7/8"	250 lbs.	20
A26T-4BRK		4"	Tread and Hub	Precision	1-1/4"	5-7/16"	4-1/8"	Total Locking Brake	3-5/8" x 2-7/8"	250 lbs.	20
A26T-4RG		4"		Precision	1-1/4"	5-7/16"	4-1/8"	Rigid	4-1/8" x 2-15/16"	250 lbs.	20
A26U-4	Polyurethane	4"	Dark Grey	Precision	1-1/4"	5-7/16"	4-1/8"	Swivel	3-5/8" x 2-7/8"	300 lbs.	20
A26U-4BRK		4"	Tread and Hub	Precision	1-1/4"	5-7/16"	4-1/8"	Total Locking Brake	3-5/8" x 2-7/8"	300 lbs.	20
A26U-4RG		4"		Precision	1-1/4"	5-7/16"	4-1/8"	Rigid	4-1/8" x 2-15/16"	300 lbs.	20
A26T-5	TPR	5"	Light Grey	Precision	1-1/4"	6-1/2"	4-1/8"	Swivel	3-5/8" x 2-7/8"	300 lbs.	20
A26T-5BRK		5"	Tread and Hub	Precision	1-1/4"	6-1/2"	4-1/8"	Total Locking Brake	3-5/8" x 2-7/8"	300 lbs.	20
A26T-5RG		5"		Precision	1-1/4"	6-1/2"	4-1/8"	Rigid	4-1/8" x 2-15/16"	300 lbs.	20
A26U-5	Polyurethane	5"	Dark Grey	Precision	1-1/4"	6-1/2"	4-1/8"	Swivel	3-5/8" x 2-7/8"	325 lbs.	20
A26U-5BRK		5"	Tread and Hub	Precision	1-1/4"	6-1/2"	4-1/8"	Total Locking Brake	3-5/8" x 2-7/8"	325 lbs.	20
A26U-5RG		5"		Precision	1-1/4"	6-1/2"	4-1/8"	Rigid	4-1/8" x 2-15/16"	325 lbs.	20



Soft Rubber • Hard Rubber • Polypropylene 2", 2-1/2", 3" & 4" Diameter Wheels

Ideal for general use in factories, warehouses, stores, hotels, schools, offices, etc.

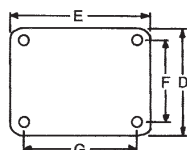
Such applications may include furniture dollies, display racks, tool boxes, equipment carts, etc.

Available in 3 Wheel Styles:

SOFT RUBBER - This composition rubber wheel combines a soft rubber tread with a hard rubber core for quiet movement, a cushioned ride, and maximum floor protection. Temperature operating range is -40°F to +180°F. Hardness is 75A.

HARD RUBBER - A hard rubber molded composition throughout. It is impervious to oils, greases and gasoline. It offers many desirable characteristics; high load rating, good mobility, high impact resistance, and good floor protection. Temperature operating range is -40°F to +180°F. Hardness is 75A.

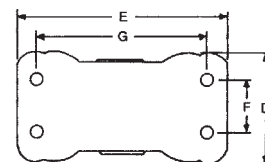
POLYPROPYLENE - This polypropylene wheel is light in weight, low in cost and high in impact strength. It resists water and chemical absorption and even stands up to repeated steam cleaning non-marking tread provides excellent floor protection. Temperature operating range is -20°F to +180°F. Hardness is 60D.



**For Swivel &
Swivel w/Brake Casters**

Wheel Dia.	Size of Top Plate D x E	Mounting Hole Spacing F x G	Mounting Hole Dia.
2"	1-7/8" x 2-9/16"	15/16" x 2-1/8"	1/4"
2-1/2"	2-3/4" x 3-13/16"	1-3/4" x 3"	5/16"
3"	3-1/8" x 4-1/8"	2-3/8" x 3-3/8" to 3-7/16"	5/16"
4"	4" x 5-1/8"	3" x 4"	3/8"

TOP PLATE DIMENSIONS:



**For Rigid Plate
Casters**

Wheel Dia.	Size of Top Plate D x E	Mounting Hole Spacing F x G	Mounting Hole Dia.
2"	1-1/2" x 2-21/32"	15/16" x 2-1/8"	1/4"
2-1/2"	2-1/4" x 4-7/16"	1-1/16" x 3-1/2"	5/16"
3"	2-1/2" x 4-15/16"	1-3/16" x 4"	5/16"
4"	3-1/8" x 6-1/4"	1-3/4" x 5"	3/8"

Swivel Plate Caster



Part #	Wheel Material	Wheel Dia.	Tread Width	Load Capacity Per Caster	Mounting Height	Swivel Radius	Pieces Per Carton
C121-2	Soft Rubber	2"	1"	90 lbs.	2-1/2"	1-11/16"	50
C127-2	Hard Rubber	2"	1"	150 lbs.	2-1/2"	1-11/16"	50
C160-2	Polypropylene	2"	15/16"	150 lbs.	2-1/2"	1-11/16"	50
C121-25	Soft Rubber	2-1/2"	1-1/8"	100 lbs.	3-3/16"	2-1/4"	50
C127-25	Hard Rubber	2-1/2"	1-1/8"	200 lbs.	3-3/16"	2-1/4"	50
C121-3	Soft Rubber	3"	1-1/4"	175 lbs.	3-13/16"	2-3/8"	24
C127-3	Hard Rubber	3"	1-1/4"	270 lbs.	3-13/16"	2-3/8"	24
C160-3	Polypropylene	3"	1-1/4"	270 lbs.	3-13/16"	2-3/8"	24
C121-4	Soft Rubber	4"	1-5/16"	225 lbs.	5"	3-3/16"	20
C127-4	Hard Rubber	4"	1-5/16"	350 lbs.	5"	3-3/16"	20

Swivel Plate Caster w/Brake



Part #	Wheel Material	Wheel Dia.	Tread Width	Load Capacity Per Caster	Mounting Height	Swivel Radius	Pieces Per Carton
C121-2SB	Soft Rubber	2"	1"	90 lbs.	2-1/2"	1-15/16"	50
C127-2SB	Hard Rubber	2"	1"	150 lbs.	2-1/2"	1-15/16"	50
C121-3SB	Soft Rubber	3"	1-1/4"	175 lbs.	3-13/16"	2-1/2"	24
C127-3SB	Hard Rubber	3"	1-1/4"	270 lbs.	3-13/16"	2-1/2"	24
C121-4SB	Soft Rubber	4"	1-5/16"	225 lbs.	5"	3-5/16"	20
C127-4SB	Hard Rubber	4"	1-5/16"	350 lbs.	5"	3-5/16"	20

Rigid Plate Caster



Part #	Wheel Material	Wheel Dia.	Tread Width	Load Capacity Per Caster	Mounting Height	Pieces Per Carton
C521-2	Soft Rubber	2"	1"	90 lbs.	2-1/2"	50
C527-2	Hard Rubber	2"	1"	150 lbs.	2-1/2"	50
C560-2	Polypropylene	2"	15/16"	150 lbs.	2-1/2"	50
C521-25	Soft Rubber	2-1/2"	1-1/8"	100 lbs.	3-3/16"	50
C527-25	Hard Rubber	2-1/2"	1-1/8"	200 lbs.	3-3/16"	50
C521-3	Soft Rubber	3"	1-1/4"	175 lbs.	3-13/16"	24
C527-3	Hard Rubber	3"	1-1/4"	270 lbs.	3-13/16"	24
C560-3	Polypropylene	3"	1-1/4"	270 lbs.	3-13/16"	24
C521-4	Soft Rubber	4"	1-5/16"	225 lbs.	5"	20
C527-4	Hard Rubber	4"	1-5/16"	350 lbs.	5"	20



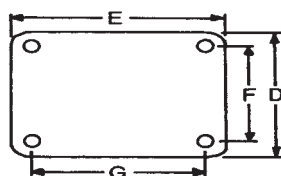
2", 2-1/2" & 3" Diameter Wheels - SOFT WHEEL RUBBER

APPLICATIONS: General usage in factories, warehouses, display racks, trucks, tool boxes, etc.
A combination of **STRENGTH**, **DURABILITY** and **ECONOMY**.

- Single Ball Bearing Raceway
- Zinc Finish
- Soft Rubber Wheel

TOP PLATE DIMENSIONS:

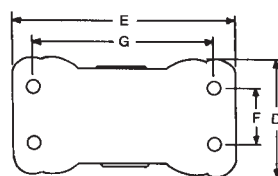
FOR SWIVEL & SWIVEL W/BRAKE CASTERS



821 PLATE

Part #	Size Of Top Plate D x E	Mounting Hole Spacing F x G	Mounting Hole Dia.
821-2	1-7/8" x 2-5/8"	15/16" x 2-1/8"	1/4"
821-25	2-3/4" x 3-13/16"	1-3/4" x 3"	5/16"
821-3	3-1/8" x 4-1/8"	2-3/8" x 3-3/8"	5/16"

FOR RIGID PLATE CASTERS



921 PLATE

Part #	Size Of Top Plate D x E	Mounting Hole Spacing F x G	Mounting Hole Dia.
921-2	1-7/8" x 2-5/8"	15/16" x 2-1/8"	1/4"
921-25	2-3/8" x 4-3/8"	1" x 3-1/2"	5/16"
921-3	2-1/2" x 4-15/16"	1-3/16" x 4"	5/16"



#821 Swivel Plate Caster

Part #	Wheel Dia.	Wheel Width	Load Capacity Per Caster	Overall Height	Swivel Radius
821-2	2"	1"	55 lbs.	2-5/8"	1-11/16"
821-25	2-1/2"	1-1/8"	66 lbs.	3-1/8"	2-3/16"
821-3	3"	1-1/4"	88 lbs.	3-13/16"	2-7/16"



#821SB Swivel Plate Caster w/Brake

Part #	Wheel Dia.	Wheel Width	Load Capacity Per Caster	Overall Height	Swivel Radius
821-2SB	2"	1"	55 lbs.	2-5/8"	1-11/16"
821-25SB	2-1/2"	1-1/8"	66 lbs.	3-1/8"	2-3/16"
821-3SB	3"	1-1/4"	88 lbs.	3-13/16"	2-7/16"



#921 Rigid Plate Caster

Part #	Wheel Dia.	Wheel Width	Load Capacity Per Caster	Overall Height
921-2	2"	1"	55 lbs.	2-5/8"
921-25	2-1/2"	1-1/8"	66 lbs.	3-1/8"
921-3	3"	1-1/4"	88 lbs.	3-13/16"



**CLICK PART#
TO VIEW PRODUCT**

DF Series - Dura Foam & TPR Wheels

3", 4" & 5" Diameter Wheels

- **1" Wide Tread:** 90-150 lbs. load capacity per caster
- **1-1/4" Wide Tread:** 270-350 lbs. load capacity per caster

DURA FOAM wheels are molded from a blended polyolefin thus producing a wheel for almost every application. This hard, non-marring, stain resistant compound is impervious to fat, acid & grease while providing a long lasting, maintenance-free wheel at a low cost.

APPLICATIONS: Light-medium duty, usage in factories, warehouses, display racks, dollies, etc...



*Shown: DFS41
Swivel Plate Caster*

Polypropylene Wheel

- Hardness is 60D
- Temperature range (-20°F to +180°F)
- Low cost with high impact

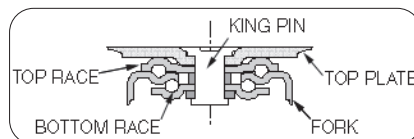


*Shown: DFS831
Swivel Plate Caster
w/Brake*

TPR Wheel

- Hardness is 70A
- Temperature range (-40°F to +180°F)
- Rugged polypropylene core with Soft Cushioned Tread

- Duo-level swivel construction
- Fully hardened raceways
- Factory lubricated with hi-temp grease
- Zinc plated with iridite dip for rust prevention and appearance
- Plain bearing
- 5/16" Hole diameter



Swivel Plate Caster

Part #	Wheel Material	Wheel Dia.	Tread Width	Plate Size	Plate Hole Spacing	Load Capacity Per Caster	Mounting Height	Swivel Radius	Carton Qty.
DFS31-TPR	TPR	3"	31/32"	3-5/8" x 2-9/16"	2-7/8" x 1-3/4"	90 lbs.	3-3/4"	2-3/4"	52
DFS32	Polypropylene	3"	1-1/4"	3-5/8" x 2-7/8"	2-15/16" x 1-3/4"	270 lbs.	3-13/16"	2-3/4"	40
DFS41	Polypropylene	4"	1"	3-5/8" x 2-9/16"	2-7/8" x 1-3/4"	140 lbs.	4-13/16"	3-5/16"	32
DFS41-TPR	TPR	4"	1"	3-5/8" x 2-9/16"	2-7/8" x 1-3/4"	115 lbs.	4-13/16"	3-5/16"	32
DFS42	Polypropylene	4"	1-1/4"	3-5/8" x 2-7/8"	2-15/16" x 1-3/4"	300 lbs.	5"	3-7/16"	30
DFS51	Polypropylene	5"	1"	3-5/8" x 2-9/16"	2-7/8" x 1-3/4"	150 lbs.	5-13/16"	3-15/16"	20
DFS51-TPR	TPR	5"	1"	3-5/8" x 2-9/16"	2-7/8" x 1-3/4"	125 lbs.	5-13/16"	3-15/16"	20
DFS52	Polypropylene	5"	1-1/4"	3-5/8" x 2-7/8"	2-15/16" x 1-3/4"	350 lbs.	6-1/8"	3-15/16"	20

Swivel Plate Caster w/Brake

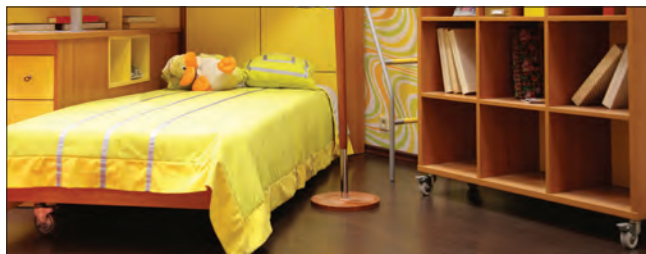
Part #	Wheel Material	Wheel Dia.	Tread Width	Plate Size	Plate Hole Spacing	Load Capacity Per Caster	Mounting Height	Swivel Radius	Carton Qty.
DFS831	Polypropylene	3"	13/16"	3-5/8" x 2-9/16"	2-7/8" x 1-3/4"	110 lbs.	3-3/4"	2-3/4"	52
DFS831-TPR	TPR	3"	31/32"	3-5/8" x 2-9/16"	2-7/8" x 1-3/4"	90 lbs.	3-3/4"	2-3/4"	52
DFS832	Polypropylene	3"	1-1/4"	3-5/8" x 2-7/8"	2-15/16" x 1-3/4"	270 lbs.	3-13/16"	2-3/4"	40
DFS841	Polypropylene	4"	1"	3-5/8" x 2-9/16"	2-7/8" x 1-3/4"	140 lbs.	4-13/16"	3-5/16"	32
DFS841-TPR	TPR	4"	1"	3-5/8" x 2-9/16"	2-7/8" x 1-3/4"	115 lbs.	4-13/16"	3-5/16"	32
DFS842	Polypropylene	4"	1-1/4"	3-5/8" x 2-7/8"	2-15/16" x 1-3/4"	300 lbs.	5"	3-7/16"	30
DFS851	Polypropylene	5"	1"	3-5/8" x 2-9/16"	2-7/8" x 1-3/4"	150 lbs.	5-13/16"	3-15/16"	20
DFS851-TPR	TPR	5"	1"	3-5/8" x 2-9/16"	2-7/8" x 1-3/4"	125 lbs.	5-13/16"	3-15/16"	20
DFS852	Polypropylene	5"	1-1/4"	3-5/8" x 2-7/8"	2-15/16" x 1-3/4"	350 lbs.	6-1/8"	3-15/16"	20

Rigid Plate Caster



Shown: DFR31

Part #	Wheel Material	Wheel Dia.	Tread Width	Plate Size	Plate Hole Spacing	Load Capacity Per Caster	Mounting Height	Carton Qty.
DFR31	Polypropylene	3"	13/16"	3-5/8" x 2-9/16"	2-7/8" x 1-3/4"	110 lbs.	3-3/4"	52
DFR31-TPR	TPR	3"	31/32"	3-5/8" x 2-9/16"	2-7/8" x 1-3/4"	90 lbs.	3-3/4"	52
DFR32	Polypropylene	3"	1-1/4"	4-1/8" x 2-15/16"	2-15/16" x 1-3/4"	270 lbs.	3-13/16"	40
DFR41-TPR	TPR	4"	1"	3-5/8" x 2-9/16"	2-7/8" x 1-3/4"	115 lbs.	4-13/16"	32
DFR42	Polypropylene	4"	1-1/4"	4-1/8" x 2-15/16"	2-15/16" x 1-3/4"	300 lbs.	5"	30
DFR51	Polypropylene	5"	1"	3-5/8" x 2-9/16"	2-7/8" x 1-3/4"	150 lbs.	5-13/16"	20
DFR51-TPR	TPR	5"	1"	3-5/8" x 2-9/16"	2-7/8" x 1-3/4"	125 lbs.	5-13/16"	20
DFR52	Polypropylene	5"	1-1/4"	4-1/8" x 2-15/16"	2-15/16" x 1-3/4"	350 lbs.	6-1/8"	20



**ADDS
STRENGTH
AND
STYLE**

- Dust seal
- Thread guard
- Nut & bolt axle



TOTAL LOCKING BRAKE
Stops wheel from rolling forward and holds caster in place, not allowing side-to-side swivel motion



Super "G" Casters

- Gray, non-marring rubber wheel on polypropylene hub
- Economic Zinc finish
- Brake pedal material: Zinc plated steel
- Horn assembly: Pressed steel w/Zinc plating



ISG75 SERIES
3" : 110 lbs.



ISG75-1BR
Total Locking Brake



ISG7100-1
Swivel



ISG100-1BR
Total Locking Brake

Part #	Wheel Option	Wheel Diameter	Wheel Width	Mounting Height	Plate Size	Mounting Hole Spacing	Swivel Radius	Load Capacity Per Caster
ISG75-1	Swivel	3"	29/32"	4"	2-9/16" x 2-9/16"	1-29/32" x 1-29/32"	2-9/16"	110 lbs.
ISG75-1BR	Total Locking Brake	3"	29/32"	4"	2-9/16" x 2-9/16"	1-29/32" x 1-29/32"	3-15/32"	110 lbs.
ISG100-1	Swivel	4"	1-1/16"	5-1/4"	2-15/16" x 2-15/16"	1-29/32" x 1-29/32"	3-7/16"	160 lbs.
ISG100-1BR	Total Locking Brake	4"	1-1/16"	5-1/4"	2-15/16" x 2-15/16"	1-29/32" x 1-29/32"	4-1/32"	160 lbs.

Super "H" Casters

- Gray, non-marring TPR wheel on polypropylene hub
- Stylish nickel finish, (Polished mirror appearance)
- Brake pedal material: ABS (Gray)
- Horn assembly: Pressed steel w/Chrome plating

5180 SERIES
3.20" : 150 lbs.



5180-CHR
Swivel

7100 SERIES
4" : 190 lbs.



7100-CHR
Swivel

Part #	Wheel Option	Wheel Diameter	Wheel Width	Mounting Height	Plate Size	Mounting Hole Spacing	Swivel Radius	Load Capacity Per Caster
5180-CHR	Swivel	3.20"	15/16"	4-1/16"	2-3/8" x 2-3/8"	1-13/16" x 1-13/16"	2-11/16"	150 lbs.
7100-CHR	Swivel	4"	15/16"	4-3/4"	2-3/8" x 2-3/8"	1-13/16" x 1-13/16"	3-5/32"	190 lbs.

Gray Dyna - Tread TPR Casters

3", 4" & 5" Diameter Wheels



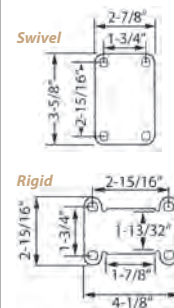
*Ideal For Tool Boxes, Bakery Racks, Dollies, Stock Trucks
And Other Institutional Uses Requiring Good Mobility.*

- **Dyna-Tread TPR Wheels:** Gray thermoplastic rubber. Can resist most chemicals, caustics, oils & acids. Rugged polypropylene hub won't dent, mar, fade or stain. Tread and hub are double bonded and mechanically interlocked to eliminate thread separation. Give dollies, carts, and trucks a soft and cushioned non-marking ride. Temperature operating range in -40°F to +180°F.
- **Two independent rows** of hardened and polished ball bearings raceways.
- **Thread Guard Hub:** Thread guards can help protect wheel bearings from buildup of material such as threads that can cause binding. Thread guards promote longer life and lower maintenance of casters & wheels.
- **Self lubricated bearings**
- **Corrosion resistant zinc finish**
- **Nut & Bolt wheel attachment**

493-3TG
(with Thread Guard)



Top Plate Specifications



Swivel Plate Caster

490-3



Part #	Wheel Dia.	Tread Width	Load Capacity Per Caster	Mounting Height	Swivel Radius	# Of Pieces Per Carton
490-3	3"	1-1/4"	180 lbs.	3-13/16"	2-3/4"	24
493-3TG (Thread Guard)	3"	1-1/4"	180 lbs.	3-13/16"	2-3/4"	24
490-4	4"	1-1/4"	250 lbs.	5"	3-7/16"	20
493-4TG (Thread Guard)	4"	1-1/4"	250 lbs.	5"	3-7/16"	20
490-5	5"	1-1/4"	300 lbs.	6-1/8"	3-15/16"	10
493-5TG (Thread Guard)	5"	1-1/4"	300 lbs.	6-1/8"	3-15/16"	10

Swivel Plate Caster w/Brake

490-3SB



Part #	Wheel Dia.	Tread Width	Load Capacity Per Caster	Mounting Height	Swivel Radius	# Of Pieces Per Carton
490-3SB	3"	1-1/4"	180 lbs.	3-13/16"	2-3/4"	24
493-3SB-TG (Thread Guard)	3"	1-1/4"	180 lbs.	3-13/16"	2-3/4"	24
490-4SB	4"	1-1/4"	250 lbs.	5"	3-7/16"	20
493-4SB-TG (Thread Guard)	4"	1-1/4"	250 lbs.	5"	3-7/16"	20
490-5SB	5"	1-1/4"	250 lbs.	6-1/8"	3-15/16"	10
493-5SB-TG (Thread Guard)	5"	1-1/4"	250 lbs.	6-1/8"	3-15/16"	10

Rigid Plate Caster

7790-3



Part #	Wheel Dia.	Tread Width	Load Capacity Per Caster	Mounting Height	# Of Pieces Per Carton
7790-3	3"	1-1/4"	180 lbs.	3-13/16"	24
7793-3TG (Thread Guard)	3"	1-1/4"	180 lbs.	3-13/16"	24
7790-4	4"	1-1/4"	250 lbs.	5"	20
7793-4TG (Thread Guard)	4"	1-1/4"	250 lbs.	5"	20
7790-5	5"	1-1/4"	300 lbs.	6-1/8"	10
7793-5TG (Thread Guard)	5"	1-1/4"	300 lbs.	6-1/8"	10

Low Profile Medium/Heavy Duty

2" & 3" Diameter Wheels



Made to support & move heavy office equipment where overall height is a limiting factor. Ideal for use on copiers, computers, large printers, & other heavy diagnostic equipment.

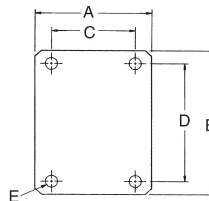


HXEP629R

- Low profile, but does not compromise strength. Is produced in smaller diameters with high load rating capacities.
- Excellent floor protection; non marring.
- Will roll on carpeted floors.



HA435-3



Wheel Material:

- **Polyflex (2" dia.):** This polypropylene wheel is light in weight, low in cost and high in impact strength. It resists water and chemical absorption and even stands up to repeated steam cleaning. Non-marking tread provides excellent floor protection.
- **Glass Filled Nylon (3" dia.):** This wheel offers high impact strength. It is produced with a roller bearing so that can withstand heavy loads. Non-marking tread provides excellent floor protection.
- **Finish:** Black oxide with corrosion resistant zinc top plate.
- **Stocked in swivel only.** Optional thumb screw brake may be available. Please inquire. Minimums apply.

TOP PLATE SPECIFICATIONS:

DIA.	A	B	C	D	E
2"	2-9/16"	3-5/8"	1-3/4"	2-7/8" to 3"	5/16"
3"	3-1/8"	4-1/8"	2-3/8"	3-13/32"	5/16"

Part #	Wheel Material	Wheel Dia.	Tread Width	Load Capacity Per Caster	Mounting Height	Swivel Radius	# Of Pieces Per Carton
HXEP629R	Polyflex	2"	1-11/16"	300 lbs.	2-27/32"	2-1/16"	40
HA435-3	Glass Filled Nylon	3"	1-13/16"	500 lbs.	3-31/32"	2-5/16"	25

Low Profile Heavy Duty

3" Diameter Wheels



Made to support HEAVY office equipment. Ideal for server cabinets, business machines, data storage racks, diagnostic equipment and mainframe enclosures.

- Black Phenolic wheel
- Low profile single wheel
- Nut & Bolt wheel attachment



BMCH-3

Part #	Wheel Material	Wheel Dia.	Tread Width	Function	Plate Size	Load Capacity Per Caster	Mounting Height	Swivel Radius	# Of Pieces Per Carton
BMCH-3	Phenolic	3"	2"	Swivel w/Brake	3-1/8" x 4-1/4"	1200 lbs.	3-7/8"	2-1/8"	4

4", 5", 6" & 8" Diameter Wheels

Ideal for industrial, bakery, food service and medical equipment.

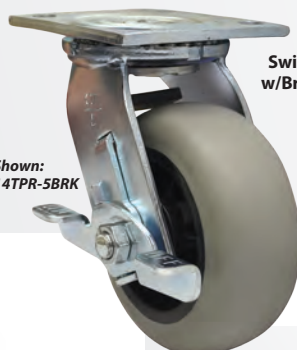


Swivel

Shown:
14GFN-5

Glass Filled Nylon Wheel

- High load capacity
- Water and chemical resistant
- Hardness is 65D
- Temperature range (-20°F to +250°F)

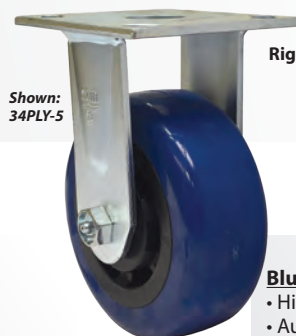


Swivel
w/Brake

Shown:
14TPR-5BRK

TPR Wheel

- Non-marring grey tread
- Rugged polypropylene core
- Resists chemicals and oils
- Hardness is 70A
- Temperature range (-40°F to +180°F)



Rigid

Shown:
34PLY-5

Blue Poly Max Wheel

- High strength urethane tread
- Autoclave safe
- Resists chemical absorption
- Hardness is 90A
- Temperature range (-40°F to +180°F)

Part #	Wheel Material	Wheel Dia.	Wheel Color	Tread Width	Mounting Height	Swivel Radius	Function	Plate Size	Load Capacity Per Caster	# Of Pieces Per Carton
14GFN-4	Glass Filled	4"	Black	2"	5-5/8"	3-3/4"	Swivel	3-7/8" x 4-1/2"	400 lbs.	4
34GFN-4	Nylon	4"		2"	5-5/8"	3-3/4"	Rigid	3-7/8" x 4-1/2"	400 lbs.	4
14GFN-4BRK	Nylon	4"		2"	5-5/8"	3-3/4"	Swivel w/Brake	3-7/8" x 4-1/2"	400 lbs.	4
14TPR-4	TPR	4"	Grey Tread with Black Hub	2"	5-5/8"	3-3/4"	Swivel	3-7/8" x 4-1/2"	350 lbs.	4
34TPR-4		4"		2"	5-5/8"	3-3/4"	Rigid	3-7/8" x 4-1/2"	350 lbs.	4
14TPR-4BRK		4"		2"	5-5/8"	3-3/4"	Swivel w/Brake	3-7/8" x 4-1/2"	350 lbs.	4
14PLY-4	Poly Max	4"	Blue Tread with Black Hub	2"	5-5/8"	3-3/4"	Swivel	3-7/8" x 4-1/2"	600 lbs.	4
34PLY-4		4"		2"	5-5/8"	3-3/4"	Rigid	3-7/8" x 4-1/2"	600 lbs.	4
14PLY-4BRK		4"		2"	5-5/8"	3-3/4"	Swivel w/Brake	3-7/8" x 4-1/2"	600 lbs.	4
14GFN-5	Glass Filled	5"	Black	2"	6-1/2"	4-1/4"	Swivel	3-7/8" x 4-1/2"	650 lbs.	4
34GFN-5	Nylon	5"		2"	6-1/2"	4-1/4"	Rigid	3-7/8" x 4-1/2"	650 lbs.	4
14GFN-5BRK	Nylon	5"		2"	6-1/2"	4-1/4"	Swivel w/Brake	3-7/8" x 4-1/2"	650 lbs.	4
14TPR-5	TPR	5"	Grey Tread with Black Hub	2"	6-1/2"	4-1/4"	Swivel	3-7/8" x 4-1/2"	450 lbs.	4
34TPR-5		5"		2"	6-1/2"	4-1/4"	Rigid	3-7/8" x 4-1/2"	450 lbs.	4
14TPR-5BRK		5"		2"	6-1/2"	4-1/4"	Swivel w/Brake	3-7/8" x 4-1/2"	450 lbs.	4
14PLY-5	Poly Max	5"	Blue Tread with Black Hub	2"	6-1/2"	4-1/4"	Swivel	3-7/8" x 4-1/2"	900 lbs.	4
34PLY-5		5"		2"	6-1/2"	4-1/4"	Rigid	3-7/8" x 4-1/2"	900 lbs.	4
14PLY-5BRK		5"		2"	6-1/2"	4-1/4"	Swivel w/Brake	3-7/8" x 4-1/2"	900 lbs.	4
14GFN-6	Glass Filled	6"	Black	2"	7-1/2"	5"	Swivel	3-7/8" x 4-1/2"	650 lbs.	4
34GFN-6	Nylon	6"		2"	7-1/2"	5"	Rigid	3-7/8" x 4-1/2"	650 lbs.	4
14GFN-6BRK	Nylon	6"		2"	7-1/2"	5"	Swivel w/Brake	3-7/8" x 4-1/2"	650 lbs.	4
14TPR-6	TPR	6"	Grey Tread with Black Hub	2"	7-1/2"	5"	Swivel	3-7/8" x 4-1/2"	550 lbs.	4
34TPR-6		6"		2"	7-1/2"	5"	Rigid	3-7/8" x 4-1/2"	550 lbs.	4
14TPR-6BRK		6"		2"	7-1/2"	5"	Swivel w/Brake	3-7/8" x 4-1/2"	550 lbs.	4
14PLY-6	Poly Max	6"	Blue Tread with Black Hub	2"	7-1/2"	5"	Swivel	3-7/8" x 4-1/2"	1100 lbs.	4
34PLY-6		6"		2"	7-1/2"	5"	Rigid	3-7/8" x 4-1/2"	1100 lbs.	4
14PLY-6BRK		6"		2"	7-1/2"	5"	Swivel w/Brake	3-7/8" x 4-1/2"	1100 lbs.	4
14GFN-8	Glass Filled	8"	Black	2"	9-1/2"	6-1/8"	Swivel	3-7/8" x 4-1/2"	675 lbs.	4
34GFN-8	Nylon	8"		2"	9-1/2"	6-1/8"	Rigid	3-7/8" x 4-1/2"	675 lbs.	4
14GFN-8BRK	Nylon	8"		2"	9-1/2"	6-1/8"	Swivel w/Brake	3-7/8" x 4-1/2"	675 lbs.	4
14TPR-8	TPR	8"	Grey Tread with Black Hub	2"	9-1/2"	6-1/8"	Swivel	3-7/8" x 4-1/2"	700 lbs.	4
34TPR-8		8"		2"	9-1/2"	6-1/8"	Rigid	3-7/8" x 4-1/2"	700 lbs.	4
14TPR-8BRK		8"		2"	9-1/2"	6-1/8"	Swivel w/Brake	3-7/8" x 4-1/2"	700 lbs.	4
14PLY-8	Poly Max	8"	Blue Tread with Black Hub	2"	9-1/2"	6-1/8"	Swivel	3-7/8" x 4-1/2"	1200 lbs.	4
34PLY-8		8"		2"	9-1/2"	6-1/8"	Rigid	3-7/8" x 4-1/2"	1200 lbs.	4
14PLY-8BRK		8"		2"	9-1/2"	6-1/8"	Swivel w/Brake	3-7/8" x 4-1/2"	1200 lbs.	4



Caster Sockets

Material: Polypropylene

Part #	For Caster Stem	Color	Hole Size Required
R51-248	5/16" D	Beige	7/16" Dia. x 1-7/8" D

Plastic Caster Inserts Material - Polyethylene

Tube Gauges vary - always test - free samples are available

Square Insert

SQUARE



Stem Type 1

5/16" Gripneck Stem

Part #	Fits Tubing w/O.D. w/Dim.	Works w/Stem Type	Color
1116-4	1" x 16 GA.	2	Black
1120-4	1" x 18-20 GA.	2	Black
975-1	7/8" x 20 GA.	1	Black

Round Insert

ROUND



Stem Type 2

7/16" Friction Ring Stem

Part #	Fits Tubing w/O.D. w/Dim.	Works w/Stem Type	Color
1152-1	5/8" x 20-22 GA.	1	Black
1165-1	3/4" x 20-22 GA.	1	Black
205-PG-1318	1" x 16 GA.	2	Black
1158-4	1" x 18 GA.	2	Black
1157-1	1" x 20-22 GA.	1	Black
1190-4	1-1/4" x 18 GA.	2	Black

▲ MAY BE USED FOR WOOD APPLICATIONS

Medium Duty R.T. Caster Inserts

- An alternative to diecast metal inserts.
- The reinforced thermoplastic (R.T.) construction is virtually indestructible.
- Casters can be removed & replaced continuously.
- Will work with a 7/16" friction ring stem.

SQUARE

Part #	Tube O.D.	GA.	Minimum Depth Required
RT620SQ	3/4"	16	2-1/4"
RT650SQ	3/4"	18	2-1/4"
RT0902SQ	1"	18	2-1/4"

ROUND

Part #	Tube O.D.	GA.	Minimum Depth Required
RT125RD	1"	18	2-1/4"
RT1370RD	1-1/2"	16	2-1/4"



Spring Steel Gripneck Sleeves



- Designed for wood applications.
- Hold 5/16" gripneck stem casters securely.

Socket Number	Description	Hole Diameter	Depth
GN-505	3/4" Toothed Trackplate	3/8"	1-5/8"

Metal Caster Inserts



Part #	Fits	Works w/Stem Type
A MS-40	1/2" Hole	1
B MS-716-ZP	9/16" Hole	2

Steel Brackets For Casters

- Brackets can be bolted on or welded to a variety of channel or angle iron legs.
- Fits a 7/16" dia. friction stem - maximum length of 1-3/8" long.

Zinc Plated



49
Inside Angle



81-O
Flat Bracket

Raw Steel



81R
Flat Bracket

1" Round Adaptor



1" Round adaptor fits 16/18 Gauge tubing for 7/16" x 1-1/2" friction ring stem caster

DSFRW-325

Self-Stick Casters & Feet

Self-Stick Display Caster

- Set of 4 steel reinforced wheels hold up to 240 lbs.
- Stick surface measures 2" x 2".
- Wheels measure 1-1/4" diameter.
- Industrial grade adhesive bonds and holds permanently.
- Molded of Black HIPs.



SA-C10

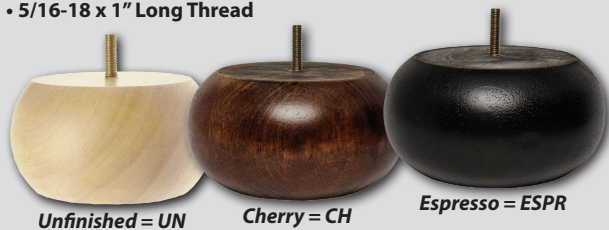
Self-Stick Display Foot

- Attaches to bottom of display with a permanent self adhesive.
- Holds approximately 400 lbs. per set of four.
- Lifts displays off of the floor by 3/4".
- Size is 2" x 2".
- Made of durable polyethylene.



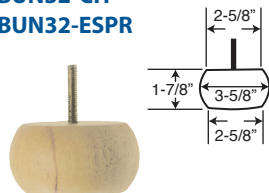
SA-F10

- Available in Unfinished Hardwood, Cherry & Espresso
- 5/16-18 x 1" Long Thread



Round Bun Feet

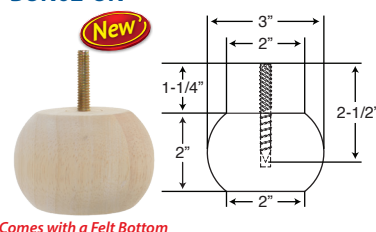
BUN32-UN
BUN32-CH
BUN32-ESPR



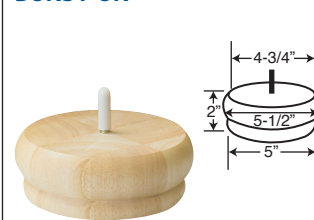
BUN01-UN



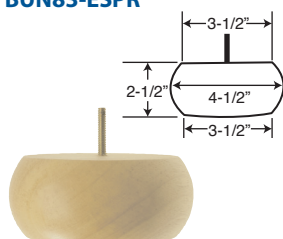
BUN02-UN



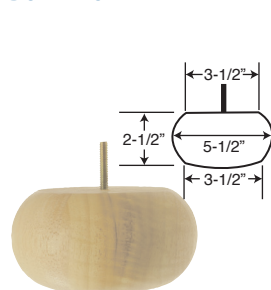
BUN31-UN



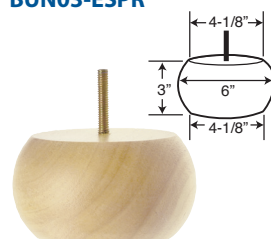
BUN83-UN
BUN83-CH
BUN83-ESPR



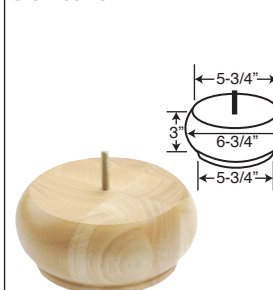
BUN41-UN



BUN03-UN
BUN03-CH
BUN03-ESPR



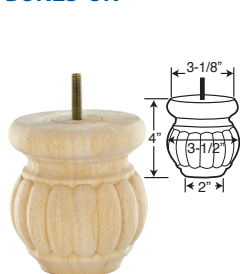
BUN89-UN



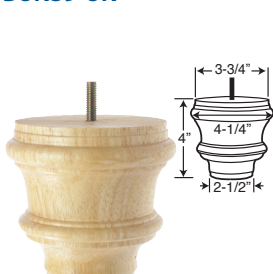
BUN24-UN
BUN24-CH
BUN24-ESPR



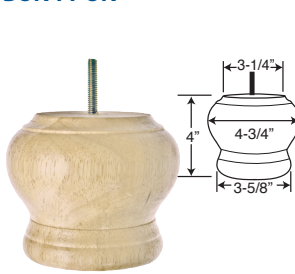
BUN23-UN



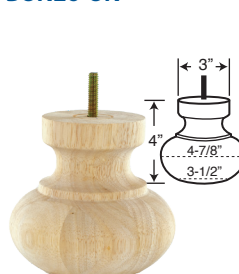
BUN39-UN



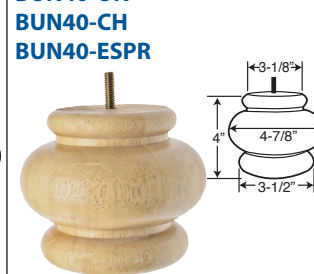
BUN44-UN



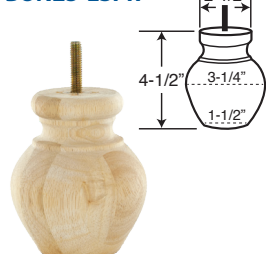
BUN26-UN



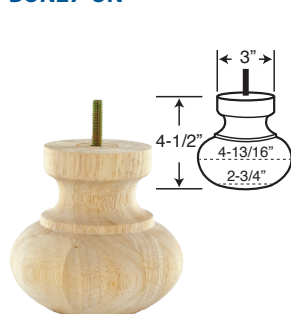
BUN40-UN
BUN40-CH
BUN40-ESPR



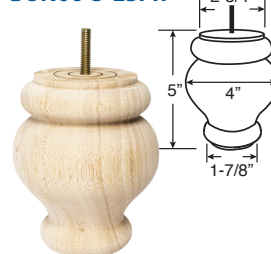
BUN25-UN
BUN25-CH
BUN25-ESPR



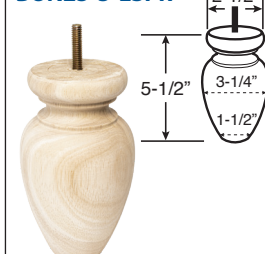
BUN27-UN



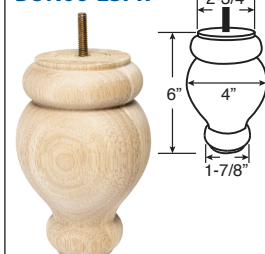
BUN06-5-UN
BUN06-5-CH
BUN06-5-ESPR



BUN25-5-UN
BUN25-5-CH
BUN25-5-ESPR

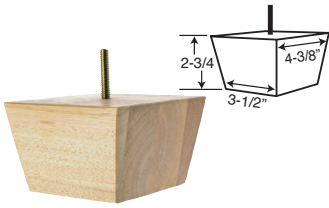


BUN06-UN
BUN06-CH
BUN06-ESPR



Square Bun Feet

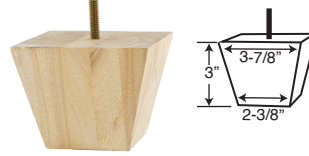
BUN09-UN



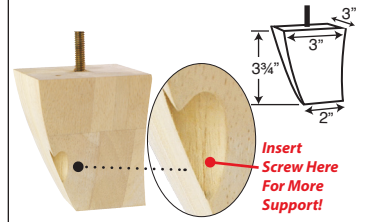
BUN34-2-UN
BUN34-2-CH
BUN34-2-ESPR
Includes glide/screws



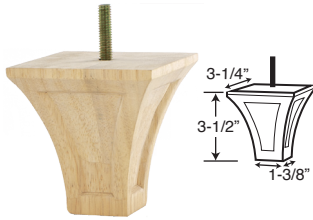
BUN34-UN
BUN34-CH
BUN34-ESPR
Includes glide/screws



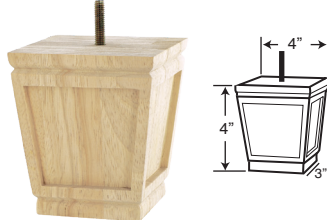
BUN57-UN



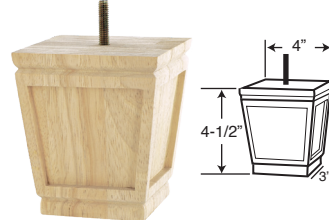
BUN103-UN



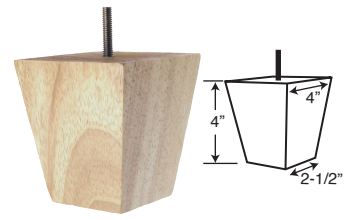
BUN47-UN



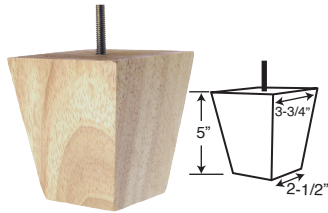
BUN48-UN



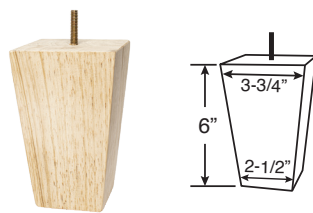
BUN49-UN
BUN49-CH
BUN49-ESPR



BUN50-UN
BUN50-CH
BUN50-ESPR

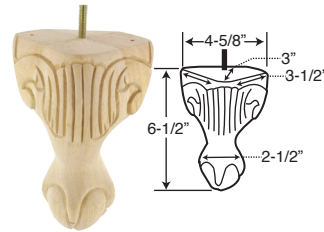


BUN50-6-UN
BUN50-6-CH
BUN50-6-ESPR

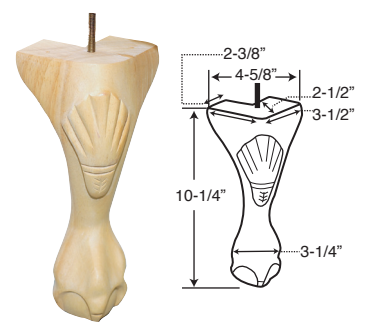


Queen Ann

BUN51-UN



BUN38-UN

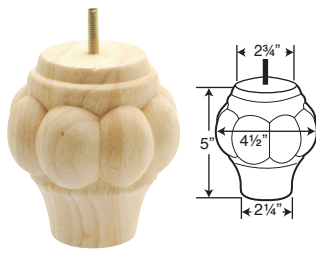


Sofa Legs

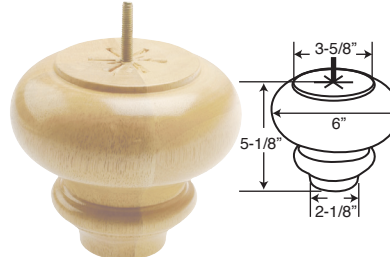
BUN121-UN



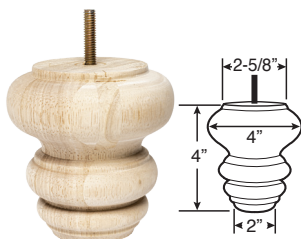
BUN330-UN



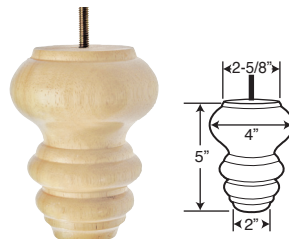
BUN88-UN



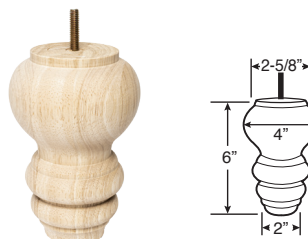
BUN14-4-UN
BUN14-4-CH
BUN14-4-ESPR



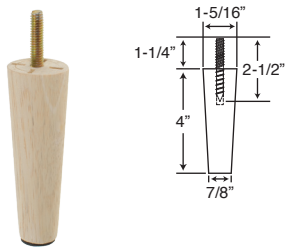
BUN14-UN
BUN14-CH
BUN14-ESPR



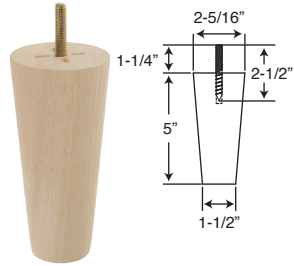
BUN14-6-UN
BUN14-6-CH
BUN14-6-ESPR



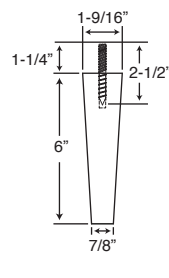
WFL20-4-UN
WFL20-4-ESPR



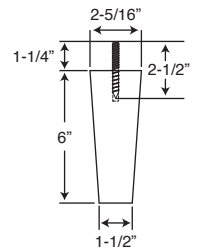
WFL08-5-UN



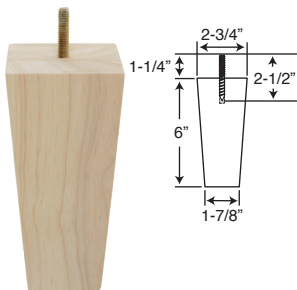
WFL23-6-UN
WFL23-6-ESPR



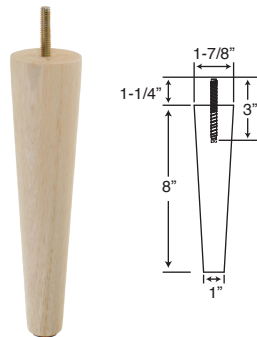
WFL11-6-UN



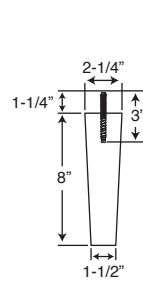
WFL14-6-UN
WFL14-6-ESPR



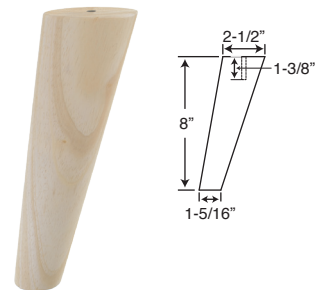
WFL26-8-UN
WFL26-8-ESPR



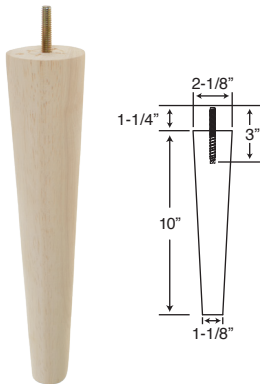
WFL17-8-UN
WFL17-8-ESPR



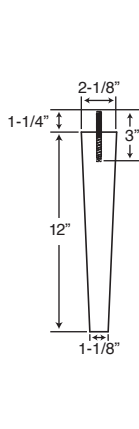
WFL05-8-UN
WFL05-8-ESPR



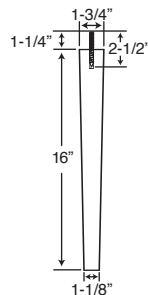
WFL29-10-UN
WFL29-10-ESPR



WFL32-12-UN
WFL32-12-ESPR



WFL01-16-UN
WFL01-16-ESPR



**EACH FURNITURE LEG
ON THIS PAGE
COMES WITH A FELT BOTTOM**

