

CABINET & FURNITURE LEVELERS





CAMAR®
the art of innovation

Cabinet Levelers

CAMAR® Levelers are made to give you a precise adjustment of your cabinets. We offer a variety of leveler heights to ensure we have the application you need.

All **CAMAR®** Plastic levelers are made of ABS material, while the metal levelers are made of Steel and/or Zinc.

CAMAR® levelers are secured by using press fit mounting which provide each leveler extra strength and stability - up to 600 lbs. load capacity per leveler + socket!

Note:
Please view our compatibility chart on www.petermeier.com to match your preferred levelers with the correct sockets.

CABINET & FURNITURE LEVELERS

Sockets

We carry various socket mounting solutions which include; Knock in, Steel hollow-bolt, Dowel mount and Screw on versions.

Like our Levelers, all of our **CAMAR®** Plastic sockets are made out of ABS and the Metal sockets are made of Steel.

Polybags

With our polybags, you get everything you need to level a cabinet in 1 bag.

Custom polybags are available, please inquire Toll Free at 800-222-6941 or E-mail us at orders@petermeier.com

Furniture Levelers

Furniture levelers from **CAMAR®** perfect for entertainment and built-in shelving units.

CAMAR® Levelers offer a higher load capacity than conventional levelers and a properly installed leveler won't bend when the furniture is moved.

TABLE OF CONTENTS

6 LEVELERS				
340 - Metal Leveler	06			
345 - Metal Leveler	06			
350 - Metal Leveler	07			
415 - ABS Plastic Leveler	07			
418 - ABS Plastic Leveler	07			
446 - ABS Plastic Leveler and Socket Combo	08			
478 - ABS Foldable Plastic Leveler	08			
9 SOCKETS				
Hollow Bolt	09			
830 - Metal Socket	09			
835 - Metal Socket	09			
840 - ABS Socket - Hollow Bolt	10			
840 - ABS Socket - 10mm Dowel	10			
840 - ABS Socket - 15mm Dowel	10			
840 - ABS Socket - Knock In	11			
840 - ABS Socket - Wood Screw	11			
12 TOE KICK CLIPS				
228 - 2-Finger Clip	12			
202 - 4-Finger Clip	12			
13 SPECIALTY LEVELERS				
27014754 - Leveler and Socket	13			
Combo with Hollow Bolt	13			
27015644 - Leveler and Socket	13			
Combo - Knock In	13			
27015054 - Toe Kick Clip	13			
27015214 - Toe Kick Clip	13			
14 POLYBAGS				
400-025B	14			
400-026B	14			
400-027B	14			
400-028B	14			
400-350	15			
400-029BS	15			
400-031B	15			
400-050B	15			
400-055B	16			
400-056B	16			
400-415B	16			
400-418B	16			
17 FURNITURE LEVELERS				
306 - 12mm Concealed Levelers	17			
306 - 14mm Concealed Levelers	18			
304-14-A2 - Concealed Leveler	18			
304-50-A2 - Concealed Leveler	18			
300-Z2-Z2 - Heavy Duty Leveler	19			
300-Z2-A2 - Regular Duty Leveler	19			
302-P2-RA - Economy ABS Leveler	19			



CONTACT INFO

1255 South Park Dr.
Kernersville, NC 27284 USA
Tel. 336-996-7774
Fax 336-996-1812
Toll Free 800-222-6941
E-mail: info@petermeier.com
www.petermeier.com

The **CAMAR**® Leveling System

- The **CAMAR**® Leveling System offers builders and installers distinct advantages over conventional cabinet and furniture construction.

Faster Installation

- Installation can be as much as 66 percent of a job's total cost. The **CAMAR**® Leveling System eliminates the need to toe notch the panels, saving an extra step and saving builders valuable time. With straight cuts, panels can be used for left or right placement, allowing for greater quality control.

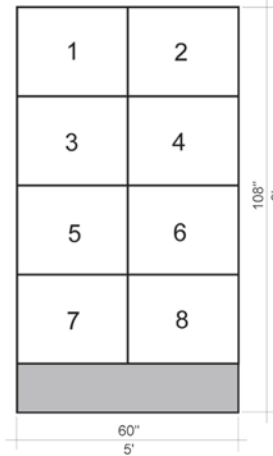
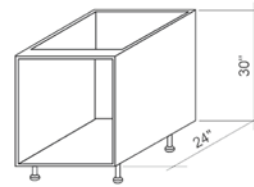
More Efficient Use of Materials

- With no toe notches to cut, builders can use a uniform cutting pattern and get six panels out of a 4' x 8' panel instead of the conventional five. That's 20% more! Faster, easier and less handling required.

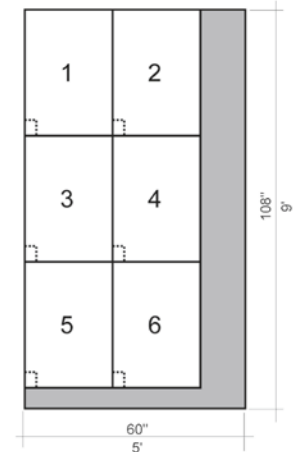
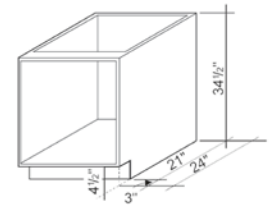
Higher Quality Installations

- With adjustable height control, the **CAMAR**® Leveling System ensures that cabinets are always level no matter what the slant of the floor below. No need for shimming and no problems with instability.

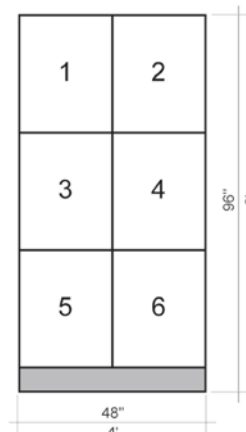
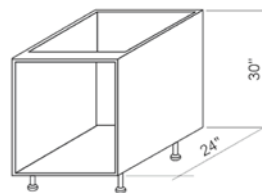
FRAMELESS



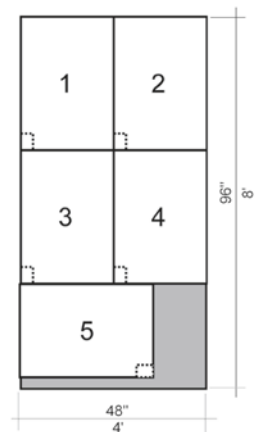
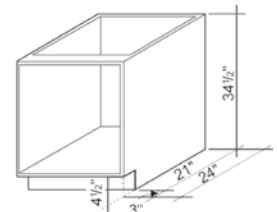
FACE FRAME



FRAMELESS
(Not Notched)



FACE FRAME
(Notched)

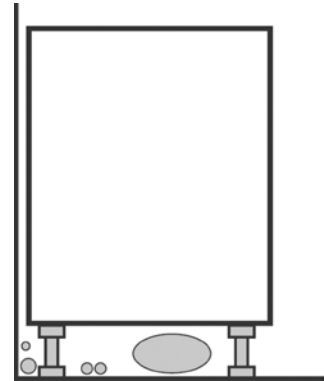


Easier for Builders

- Water pipes, electrical wiring, exhaust ducts and other plumbing can be easily installed under the cabinets.

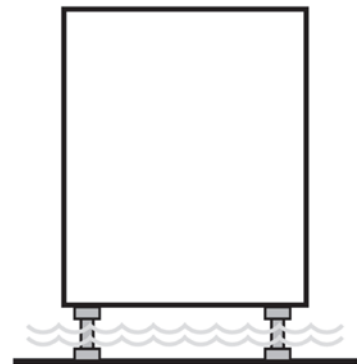
Completely Adjustable

- Levelers can be adjusted up to 2-1/2". Adjustment can be done from the inside of the cabinet through a hollow bolt or directly on the slotted leveler foot in front of the cabinet.



Easier for Installers

- Pre-Installed sockets can be used to slide the cabinet from one location to the next. This prevents potential damage on the corners when shipping or handling during installation.



Prevents Water Damage

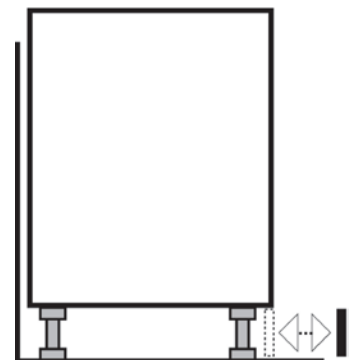
- Since the cabinets rest on the **CAMAR**® System Levelers and never directly touch the floor, they are protected from possible warping and water damage from flooding or mopping.

Saves on Shipping

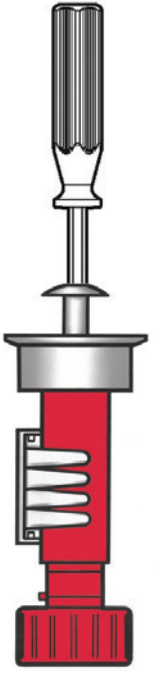
- Cabinets using the **CAMAR**® System Levelers have flat bottoms without a toe notch, allowing more cabinets to be loaded into a truck – up to 12% more cabinets, in fact! That means saving 12% on shipping costs!

Versatile

- Easy to use under cabinets, vanities, even corner cabinets. Perfect for GARAGE USE!!!!



Levelers



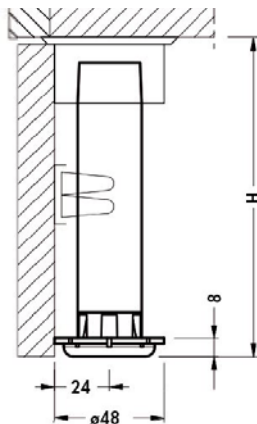
- Allow for precision adjustment of cabinetry
- All Plastic levelers are made of virgin ABS, which provide extra strength and stability
- For convenience, most levelers can be adjusted from the inside of the cabinet after installation is complete.
- Metal levelers can be used only with Metal sockets
- Plastic levelers can be used only with Plastic sockets
- Height adjustability up to 2 1/2"
- 600 lbs. weight capacity per leveler + socket

SCREWDRIVER



- Sold Separately

Description	Item Number	Length
Screwdriver	810-25-G1	10" shaft



340 METAL LEVELER

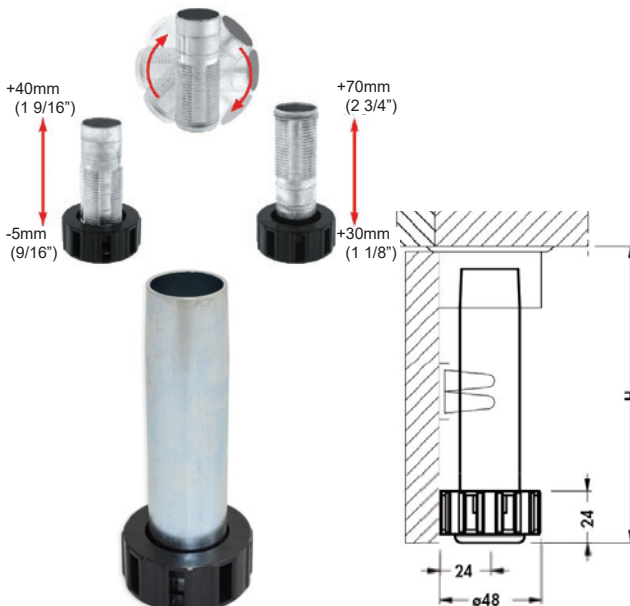
- Two-piece leveler (foot and shaft)
- Flat, black ABS foot
- Total adjustment 3/4"
- 100 per box

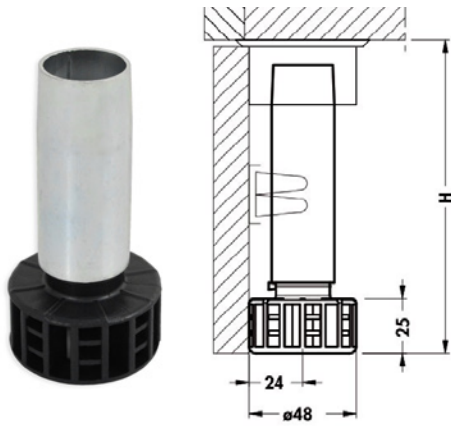
Description	Item Number	Height
Metal Leveler	340-15-02	6" - 6 3/4"

345 METAL LEVELER

- Three-piece leveler (foot, shaft and insert)
- Black ABS foot
- Total adjustment 2 1/2"
- Insert flips to reach the higher adjustment
- 100 per box

Description	Item Number	Height
Metal Leveler	345-10-02	4" - 6 1/2"
Metal Leveler	345-13-02	5 1/4" - 7 3/4"
Metal Leveler	345-17-02	6 1/2" - 9"

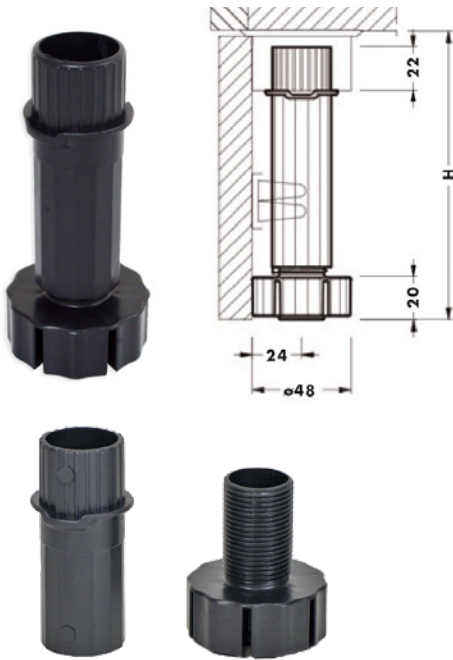




350 METAL LEVELER

- Two-piece leveler (foot and shaft)
- Flat, black ABS foot
- Total adjustment 1"
- 100 per box

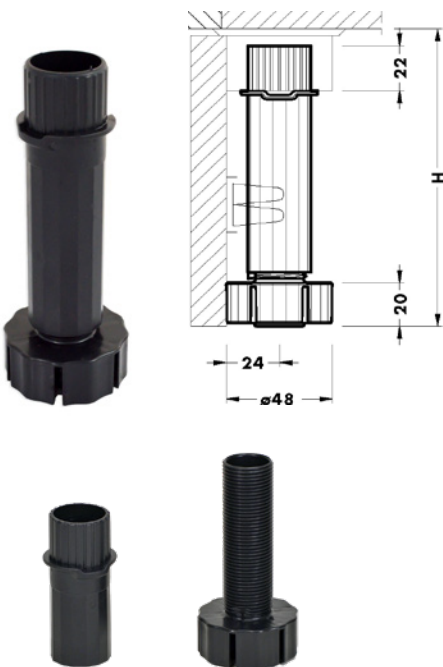
Description	Item Number	Height
Metal Leveler	350-10-02	3 3/4" - 4 3/4"



415 ABS PLASTIC LEVELER

- Two-piece leveler (foot and shaft)
- Flat, black ABS foot and shaft
- Total adjustment 1"
- 100 per box or Bulk box of 400

Description	Item Number	Height
Plastic Leveler	415-10-P2	3 3/4" - 4 3/4"
Plastic Leveler (BULK)	415-10-P2Z	3 3/4" - 4 3/4"
Plastic Leveler	415-11-P2	4 1/8" - 5 1/8"
Plastic Leveler (BULK)	415-11-P2Z	4 1/8" - 5 1/8"
Plastic Leveler	415-13-P2	4 7/8" - 5 7/8"
Plastic Leveler (BULK)	415-13-P2Z	4 7/8" - 5 7/8"



418 ABS PLASTIC LEVELER

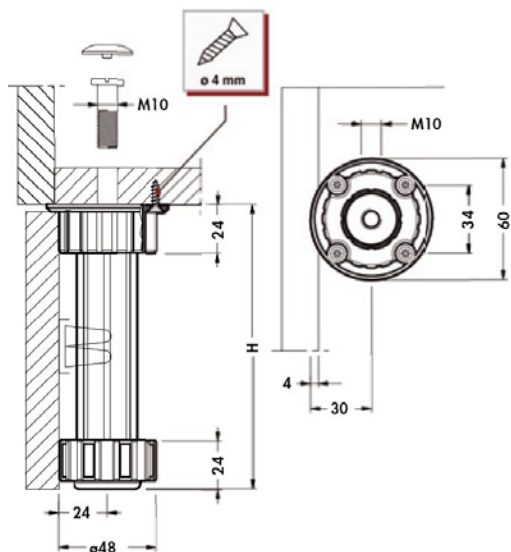
- Two-piece leveler (foot and shaft)
- Flat, black ABS foot and shaft
- Total adjustment 2 1/2"
- 100 per box or Bulk box of 400

Description	Item Number	Height
Plastic Leveler	418-10-P2	3 3/4" - 6 1/4"
Plastic Leveler (BULK)	418-10-P2Z	3 3/4" - 6 1/4"
Plastic Leveler	418-13-P2	5" - 7 1/2"
Plastic Leveler (BULK)	418-13-P2Z	5" - 7 1/2"

446 ABS PLASTIC LEVELER AND SOCKET COMBO



- Three-piece leveler (foot, shaft and socket)
- Socket is permanently molded to leveler
- Hollow-bolt mount (bolt included)
- Can be mounted using a hollow bolt, wood screws (not provided) or using both if preferred.
- Total adjustment 2"
- 100 per box



Description	Item Number	Height
Leveler with Socket, w/o Hollow Bolt	446-P2-S3	3 3/4" - 5 3/4"
Leveler with Socket, with Hollow Bolt	446-P2-S3K	3 3/4" - 5 3/4"

478 ABS FOLDABLE PLASTIC LEVELER



- Screw the leveler to the cabinet bottom, transport the cabinet safely to install location, then unfold the leveler
- One simple motion takes the leveler to the desired position
- Packed individually including 1 of each style toe kick clip (push-down and adhesive)
- Available in Screw Mount or Dowel Mount
- For both kitchen and vanity applications
- Total adjustment of 3" from min/max dimension
- 300 lbs. load capacity per leveler
- 100 per box



Description	Item Number	Height
Foldable Leveler, Screw on	478-10-P2	3 1/2" - 4 1/2" and 5 1/2" - 6 1/2"
Foldable Leveler, Dowel Mount	478-10-DW	3 1/2" - 4 1/2" and 5 1/2" - 6 1/2"



- Wide variety of socket mounting solutions, including steel hollow-bolt, dowel mount and screw-on versions
- All plastic sockets are made of ABS, which provide extra strength and stability
- Metal sockets can only be used with Metal levelers
- Plastic sockets can be used with Plastic levelers
- 600 lbs. weight capacity per socket + leveler

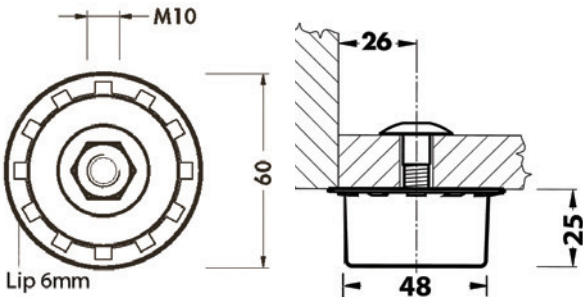


HOLLOW BOLT

- Allows for screwdriver insertion for easy leveler adjustment
- Use with 25mm cover cap
- 100 per bag

Description	Item Number	Size
Hollow bolt	850-R1-10	M10

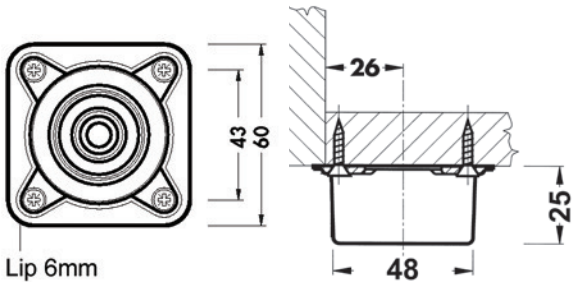
830 METAL SOCKET



- Hollow bolt mount
- Hollow bolt included
- Cover caps available
- 100 per box

Description	Item Number
Metal Socket	830-H1-00

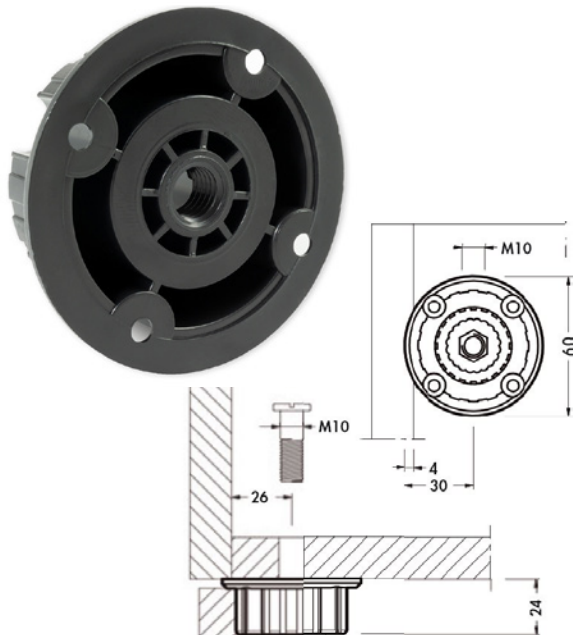
835 METAL SOCKET



- Screw mount
- 100 per Box

Description	Item Number
Metal Socket	835-E1-00

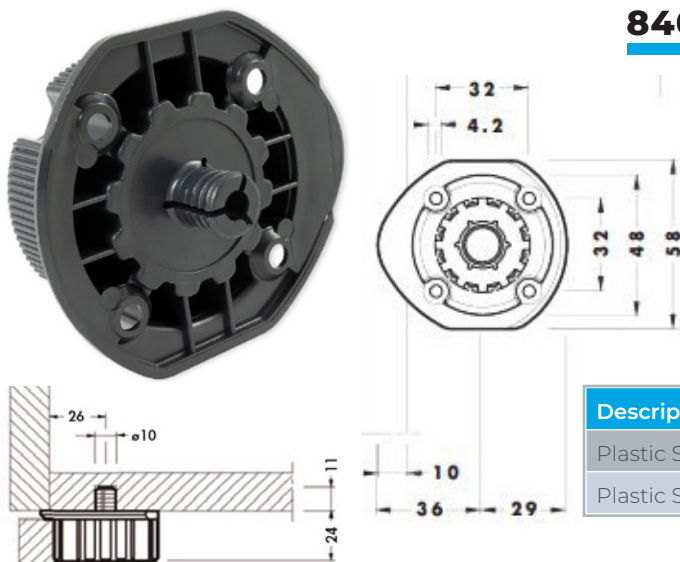
840 ABS SOCKET - HOLLOW BOLT



- Hollow bolt mount
- Hollow bolt included
- Cover caps available
- Strongest way to mount a socket
- 100 per box or Bulk box of 400

Description	Item Number	Mount
Plastic Socket with Hollow bolt	840-00-R1	Hollow Bolt
Plastic Socket with Hollow Bolt (Bulk)	840-00-R1Z	Hollow Bolt

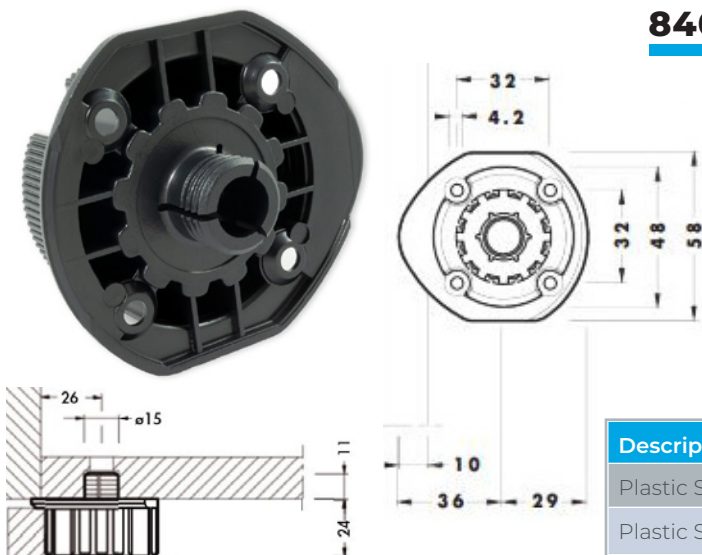
840 ABS SOCKET - 10MM DOWEL MOUNT



- 10mm Dowel mount
- V plate design for extra support
- Can be drilled with standard European drill machine
- 100 per box or Bulk box of 400

Description	Item Number	Mount
Plastic Socket, dowel	840-10-P2	Dowel / Screw
Plastic Socket, knock in dowel (Bulk)	840-10-P2Z	Dowel / Screw

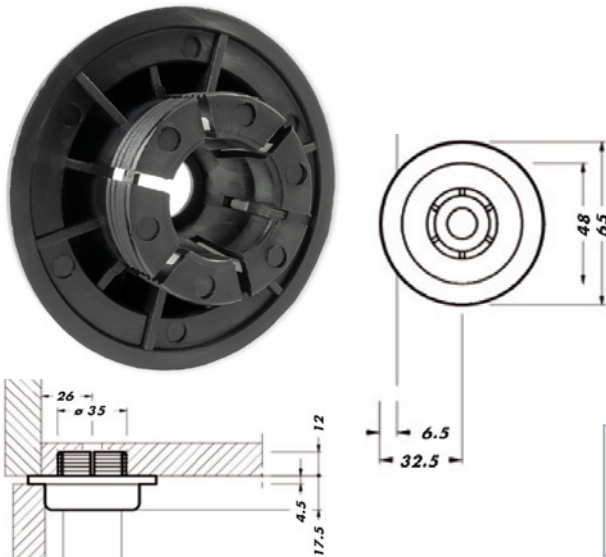
840 ABS SOCKET - 15MM DOWEL MOUNT



- 15mm Dowel mount
- V plate design for extra support
- Can be drilled with standard European drill machine
- 100 per box or Bulk box of 400

Description	Item Number	Mount
Plastic Socket, dowel	840-15-P2	Dowel / Screw
Plastic Socket, knock in dowel (Bulk)	840-15-P2Z	Dowel / Screw

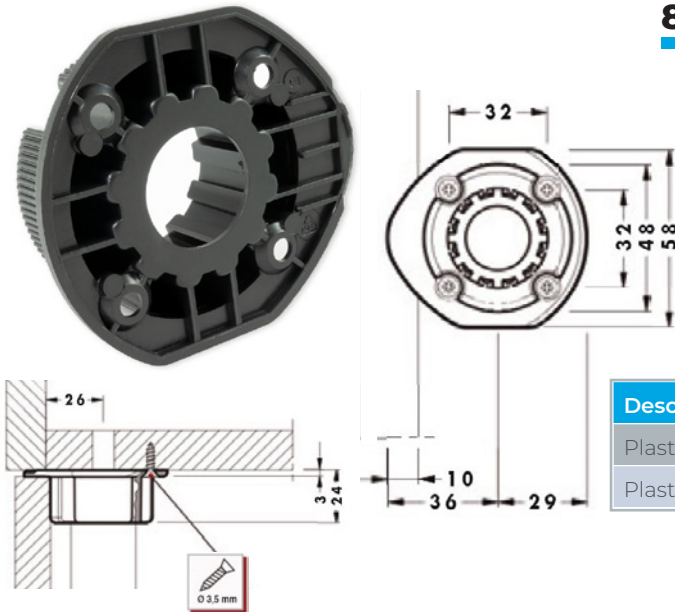
840 ABS SOCKET - KNOCK IN



- Knock in design
- 35mm Socket
- Can be drilled with standard European drill machine
- 100 per box or Bulk box of 400

Description	Item Number	Mount
Plastic Socket	840-F5-00	Knock in
Plastic Socket (Bulk)	840-F5-00Z	Knock in

840 ABS SOCKET - WOOD SCREW MOUNT



- Wood screw mount
- 3.5mm Wood screw (Not Included)
- V plate design for extra support
- 100 per box or Bulk box of 400

Description	Item Number	Mount
Plastic Socket, Wood Screw Only	840-H5-P2	Wood Screw
Plastic Socket Wood Screw only (Bulk)	840-H5-P2Z	Wood Screw

COVER CAPS, 25MM

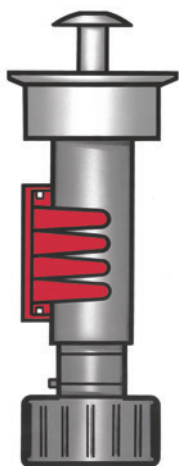
- For use with hollow bolt version sockets
- 100 per bag



Description	Item Number	Finish
810 Cover Cap	810-37-01	White
810 Cover Cap	810-37-02	Black
810 Cover Cap	810-37-04	Brown
810 Cover Cap	810-37-55	Almond
810 Cover Cap	810-37-55 *	Grey

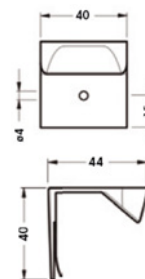
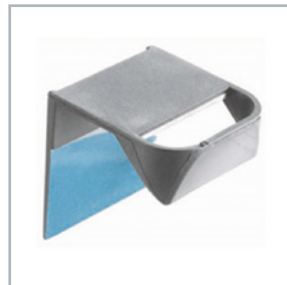
* Special Order

Toe Kick Clips



- All Toe Kick Clips feature metal fingers to ensure a long-lasting connection to leveler
- Toe Kick Clips available in groove, screw or adhesive mount
- 2-Finger or 4-Finger versions available
- Compatible with 340, 345, 350, 415, 418 and 446 levelers

TOE KICK HANDLE



- White ABS Handle for easy toe kick removal
- Adhesive or screw mount
- 100 per box

Description	Item Number
Toe Kick Handle	230-01-BE

2-FINGER CLIP



- 2 Finger steel clip
- Adhesive, 4mm groove mount or screw mount
- ABS plastic backing
- Works with all of our levelers
- 100 per box



Description	Item Number
2-Finger Adhesive Mount	228-AD-E2
2-Finger 4mm Groove Mount	228-AN-C2
2-Finger Screw Mount	228-V1-T2

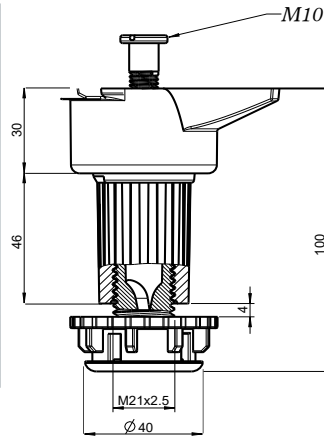
4-FINGER CLIP



- 4 Finger steel clip
- 4mm groove mount or screw mount
- ABS plastic backing
- Works with all of our levelers
- 100 per box



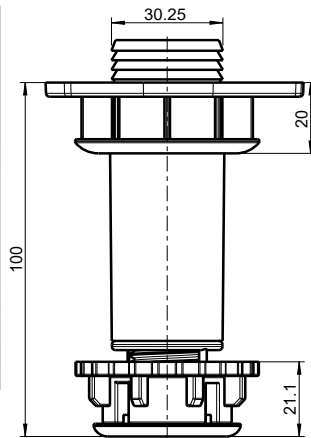
Description	Item Number
4-Finger 4mm Groove Mount	202-AN-C2
4-Finger Screw Mount	202-V1-T2



PLASTIC LEVELER AND SOCKET HOLLOW BOLT

- Three-piece leveler (foot, shaft and socket)
- Hollow-bolt mount (bolt included)
- Flat, black non-slip rubber foot
- Total adjustment 2"
- 100 per box

Description	Item Number	Height
Leveler with Socket and Hollow Bolt	27014754	4" - 6"



PLASTIC LEVELER AND SOCKET KNOCK IN

- Three-piece leveler (foot, shaft and socket)
- 30mm Knock-in socket mount
- Flat, black non-slip rubber foot
- Total adjustment 1"
- 100 per box

Description	Item Number	Height
Leveler with Knock-in Socket	27015644	4" - 5"



TOE KICK CLIP - SCREW ON

- 2 finger plastic clip
- Screw mount
- Works with 27014754 and 27015644
- 50 per bag

Description	Item Number
Toe Kick Clip - Screw On	27015054



TOE KICK CLIP - KNOCK IN

- 2 finger plastic clip
- Groove mount
- Works with 27014754 and 27015644
- 50 per bag

Description	Item Number
Toe Kick Clip - Groove Mount	27015214

400-025B



Description	Content	Quantity
Metal Leveler, 3 piece, 4" - 6 1/2"	345-10-02	4 pieces
Metal Socket with Hollow Bolt	830-H1-00	4 pieces
Toe Kick Clip, Groove Mount, 4 fingers	202-AN-C2	2 pieces
Cover cap 25mm White	810-37-01	4 pieces
Cover cap 25mm Almond	810-37-55	4 pieces

400-026B



Description	Content	Quantity
Metal Leveler, 3 piece, 4" - 6 1/2"	345-10-02	4 pieces
Metal Socket with Hollow Bolt	830-H1-00	4 pieces
Toe Kick Clip, Screw Mount, 4 fingers	202-V1-T2	2 pieces
Cover cap 25mm White	810-37-01	4 pieces
Cover cap 25mm Almond	810-37-55	4 pieces

400-027B



Description	Content	Quantity
Metal Leveler, 3 piece 4" - 6 1/2"	345-10-02	4 pieces
Metal Socket for Wood Screw Mount	835-E1-00	4 pieces
Toe Kick Clip, Groove Mount, 4 fingers	202-AN-C2	2 pieces

400-028B



Description	Content	Quantity
Metal Leveler, 3 piece 4" - 6 1/2"	345-10-02	4 pieces
Metal Socket for Wood Screw Mount	835-E1-00	4 pieces
Toe Kick Clip, Screw Mount, 4 fingers	202-V1-T2	2 pieces



400-350

Description	Content	Quantity
Metal Leveler, 2 piece, 3 3/4" - 4 3/4"	350-10-02	4 pieces
Metal Socket for Wood Screw Mount	835-E1-00	4 pieces
Toe Kick Clip, Adhesive Mount, 2 fingers	228-AD-E2	2 pieces



400-029BS

Description	Content	Quantity
Plastic Leveler, 3 piece, 4" - 6 1/2"	448-10-P2	4 pieces
Plastic Socket with Hollow Bolt	841-00-P2	4 pieces
Toe Kick Clip, Groove Mount, 4 fingers	202-AN-C2	2 pieces
Cover cap 25mm White	810-37-01	4 pieces
Cover cap 25mm Almond	810-37-55	4 pieces



400-031B

Description	Content	Quantity
Plastic Leveler, 2 piece, 3 3/4" - 4 3/4"	415-10-P2	4 pieces
Plastic Socket with Hollow Bolt	840-00-R1	4 pieces
Toe Kick Clip, Groove Mount, 4 fingers	202-AN-C2	2 pieces
Cover cap 25mm White	810-37-01	4 pieces
Cover cap 25mm Almond	810-37-55	4 pieces



400-050B

Description	Content	Quantity
Plastic Leveler, 2 piece, 3 3/4" - 6 1/4"	418-10-P2	4 pieces
Plastic Socket, V Plate, 15mm Dowel Mount	840-15-P2	4 pieces
Toe Kick Clip, Groove Mount, 2 fingers	228-AN-C2	2 pieces

400-055B



Description	Content	Quantity
Plastic Leveler, 3 piece with Hollow Bolt, 3 3/4" - 5 3/4"	446-P2-S3K	4 pieces
Toe Kick Clip, Screw Mount, 2 fingers	228-V1-T2	2 pieces
Cover cap 25mm White	810-37-01	4 pieces
Cover cap 25mm Almond	810-37-55	4 pieces

400-056B



Description	Content	Quantity
Plastic Leveler, 3 piece with Hollow Bolt, 3 3/4" - 5 3/4"	446-P2-S3K	4 pieces
Toe Kick Clip, Groove Mount, 4 fingers	202-AN-C2	2 pieces
Cover cap 25mm White	810-37-01	4 pieces

400-415B



Description	Content	Quantity
Plastic Leveler, 2 piece, 3 3/4" - 4 3/4"	415-10-P2	4 pieces
Plastic Socket, V Plate, Wood Screw Mount Only	840-H5-P2	4 pieces
Toe Kick Clip, Adhesive Mount, 2 fingers	228-AD-E2	2 pieces

400-418B



Description	Content	Quantity
Plastic Leveler, 2 piece, 3 3/4" - 6 1/4"	418-10-P2	4 pieces
Plastic Socket, V Plate, Wood Screw Mount Only	840-H5-P2	4 pieces
Toe Kick Clip, Screw Mount, 4 fingers	202-V1-T2	2 pieces



12MM HEAVY-DUTY METAL CONCEALED LEVELER

- Easy height adjustments with a #4 hex key or screwdriver
- Up to 1" height adjustment (11/16" on 306-03-12)
- One-person leveling
- 660 lbs. load capacity
- Sturdy metal levelers won't bend when moving furniture
- 12mm drill bit and fixture available
- 10 Hex Keys included per 100 levelers
- 100 per box



Use the template to drill the placement hole.



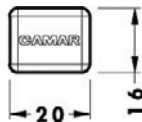
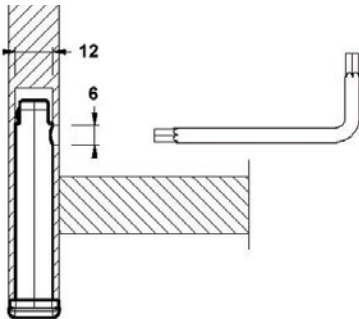
Drill the adjustment hole. Max opening of 1-3/4"



Insert 12mm Concealed Leveler into placement hole.



Adjust as needed through adjustment hole.

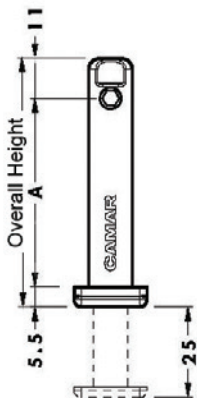


02.7442.4



306SD

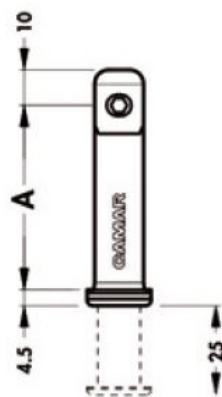
*10 Hex Keys are included in package of 100 levelers.



'A' Dimension will change with the height of the leveler - see chart.

Description	Item Number	"A" Height	Packing
12mm Concealed Leveler	306-03-12	1 1/4" (32mm)	100
12mm Concealed Leveler	306-05-12	2" (52mm)	100
12mm Concealed Leveler	306-07-12	2 7/8" (70mm)	100
12mm Concealed Leveler	306-10-12	4" (100mm)	100
12mm Concealed Leveler	306-12-12	4 3/4" (120mm)	100
Polybag, 4 pieces 306-05-12 with 1 Hex Key	400-05-12	2" (52mm)	1
Hex Key, 4mm	02.7442.4	-	1
Drill Template 12mm	306-MA-12	-	1
Screwdriver	306SD	-	1
Drill Bit - 12mm	BIT-12	-	1

14MM HEAVY-DUTY METAL CONCEALED LEVELER

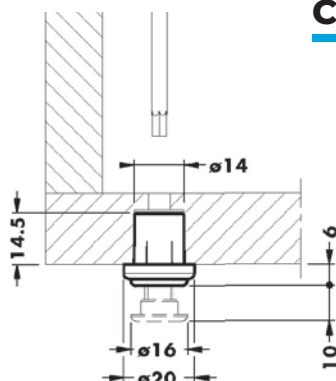


- Great for desks and partitions
- Adjustable range up to 1"
- Minimum panel thickness 3/4"
- 14mm hole required to ensure secure fit
- No glue needed
- 14mm drill bit and fixture available
- 660 lbs. load capacity per leveler
- 10 Hex Keys included per 100 levelers
- 100 per box

Description	Item Number	"A" Height	Packing
14mm Concealed Leveler	306-05-00	2" (52mm)	100
Drill Template 14mm	306-MA-00	-	1
Drill Bit - 14mm	BIT-14	-	1

14mm Concealed Levelers may also be adjusted with 02.7442.4 and 306SD, [shown on pg. 17](#)

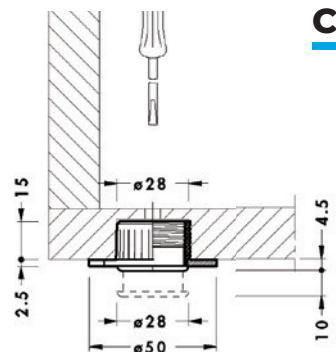
14MM BASE PANEL CONCEALED LEVELER



- ABS leveler with a 10mm adjustment
- Easily installed in base panel with through hole adjustment
- 4mm Hex Key not included
- 330 lbs. load capacity per leveler
- 200 per box

Description	Item Number	Capacity
14mm Concealed Leveler	304-14-A2	330 lbs.

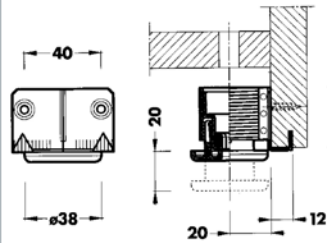
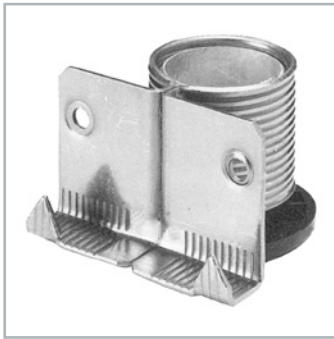
28MM BASE CABINET CONCEALED LEVELER



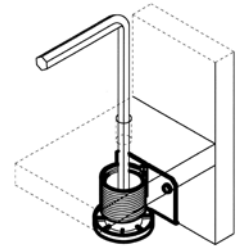
- Zinc leveler with a 10mm adjustable ABS foot
- Requires a flat screwdriver for adjustment
- Easily installed in base panel with through hole adjustment
- 440 lbs. load capacity per leveler
- 200 per box

Description	Item Number	Capacity
28mm Concealed Leveler	304-50-A2	440 lbs.

HEAVY DUTY LEVELER

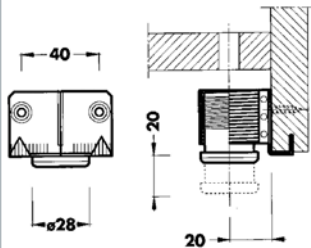
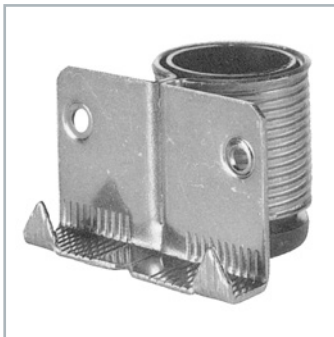


- Metal leveler with metal insert and large floating ABS foot
- Independent turning insert prevents floor scratches while adjusting the height
- Total adjustment 3/4"
- 10 Hex Keys included
- 330 lbs. load capacity per leveler
- 100 per box

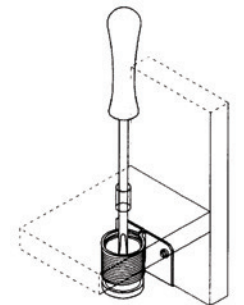


Description	Item Number	Capacity
Heavy-Duty Leveler	300-Z2-Z2	330 lbs.
Extra Allen Key	809-13-Z1	-

REGULAR DUTY LEVELER

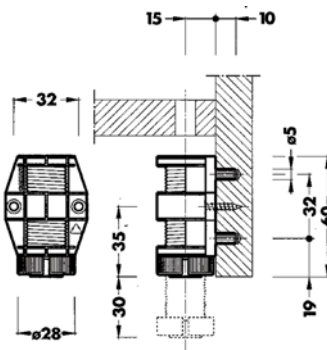


- Metal leveler with threaded ABS insert
- Slotted Standard screwdriver adjustment
- Total adjustment 3/4"
- 220 lbs. load capacity per leveler
- 100 per box

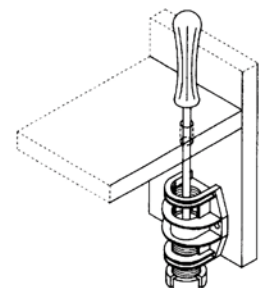


Description	Item Number	Capacity
Regular-Duty Leveler	300-Z2-A2	220 lbs.

ECONOMY ABS LEVELER



- ABS plastic leveler
- Two 5mm dowels spaced 32mm apart for line boring and 2 holes for wood screws
- Total adjustment 1 1/8"
- 176 lbs. load capacity per leveler
- 100 per box



Description	Item Number	Capacity
Economy Leveler	302-P2-RA	176 lbs.



CONTACT INFO

1255 South Park Dr.
Kernersville, NC 27284 USA

Tel. 336-996-7774
Fax 336-996-1812
Toll Free 800-222-6941

E-mail: info@petermeier.com
www.petermeier.com