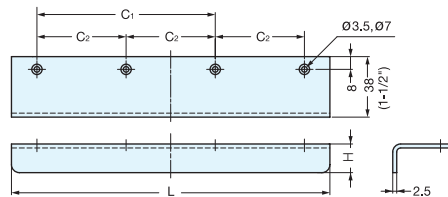


# EDGE PULL



**SN**



Available in 3 finishes. Please specify finish when ordering.

Material	Finish
304 Stainless Steel	Mirror (M) Satin (S) Black (BL)

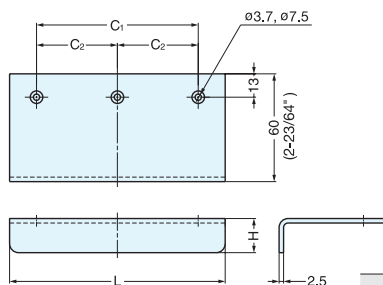
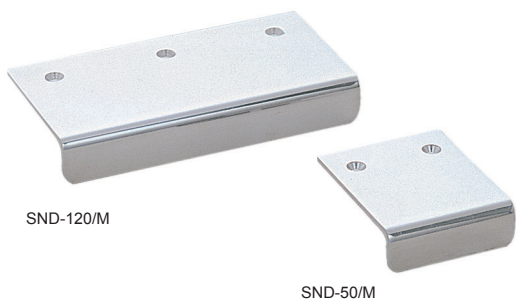
Item No.	L	C1	C2	H	Holes	Weight (g)	Box (pcs)	Carton (pcs)
SN-50/M*	50 ( 1-31/32" )	30 ( 1-3/16" )	-	18 ( 11/16" )	2	47	40	400
SN-70/M*	70 ( 2-3/4" )	46 ( 1-13/16" )	-			65	30	300
SN-95/M*	95 ( 3-47/64" )	65 ( 2-9/16" )	-			90	20	200
SN-120/M*	120 ( 4-23/32" )	90 ( 3-35/64" )	45		3	112	15	150
SN-150/M*	150 ( 5-29/32" )	114 ( 4-31/64" )	57			147		
SN-200/M	200 ( 7-7/8" )	112 ( 4-13/32" )	56			200		
SN-300/M	300 ( 11-13/16" )	180 ( 7-3/32" )	90		4	300	10	40

\* NSF Component

# EDGE PULL



**SND**



Material	Finish
304 Stainless Steel	Mirror

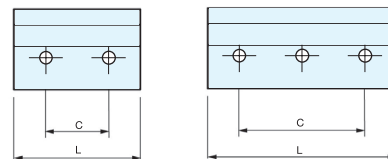
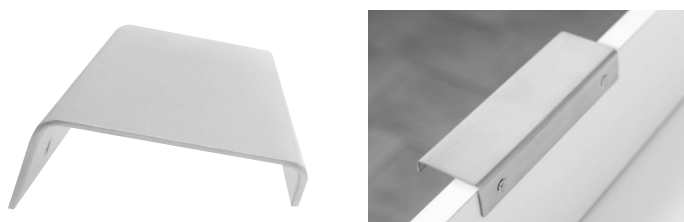
Item No.	L	C1	C2	H	Weight (g)	Box (pcs)	Carton (pcs)
SND-50/M*	50 ( 1-31/32" )	30 ( 1-3/16" )	-	17 ( 43/64" )	67	10	200
SND-70/M*	70 ( 2-3/4" )	46 ( 1-13/16" )	-		95		
SND-95/M*	95 ( 3-47/64" )	65 ( 2-9/16" )	-	18 ( 45/64" )	130	5	100
SND-120/M	120 ( 4-23/32" )	90 ( 3-35/64" )	45	19 ( 3/4" )	166		
SND-150/M	150 ( 5-29/32" )	114 ( 4-31/64" )	57	208			

\* NSF Component

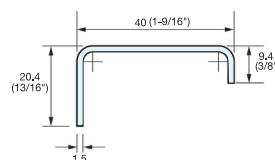
# EDGE PULL



**DSI-350**



Item No.	C	L	Weight (g)	Box (pcs)	Carton (pcs)
DSI-350-16	16 ( 5/8" )	32 ( 1-1/4" )	22	25	250
DSI-350-64	64 ( 2-1/2" )	96 ( 3-25/32" )	66		
DSI-350-96	96 ( 3-25/32" )	128 ( 5-1/16" )	88		
DSI-350-128	128 ( 5-1/16" )	160 ( 6-5/16" )	110		
DSI-350-160	160 ( 6-5/16" )	192 ( 7-9/16" )	132	10	100
DSI-350-192	192 ( 7-9/16" )	224 ( 8-13/16" )	154		
DSI-350-224	224 ( 8-13/16" )	256 ( 10-1/16" )	176		
DSI-350-256	256 ( 10-1/16" )	352 ( 13-7/8" )	240		
DSI-350-352	352 ( 13-7/8" )	544 ( 21-7/16" )	374		



Material	Finish
304 Stainless Steel	Satin