

**There's only one  
Timbermate**  
*Accept no substitutes.*



## FEATURES & BENEFITS

### Four in One Product

Grain, trowel and crack filler, sanding sealer.

### Unlimited Shelf Life

There is no waste.

### Durability

Will not shrink, sink, crack or fall out.  
Acts like wood.

### Environmentally Friendly

No VOC's.

### Custom Colors

Mix your own color using any stain,  
tint or universal colorant.

### Stain Compatibility

Accepts all types of coatings, stains and  
colorants. Can be tinted in wet state  
or overstained when dry.

### Heat and Cold Resistant

Non-flammable. Will not burn.  
If tub freezes, simply thaw out.

### Usage

For wood, masonry, plaster, flooring, drywall,  
brick, concrete, fiber glass, plastic, or metal.

## ORDERING INFORMATION

Carton Qty	SIZES			
	8 oz. 6 Each	4 lb. Quart 3 Each	16 lb. Gallon Each	40 lb. 2.5 Gal. Each
<b>COLORS</b>				
Alder	ALD25	ALD2	ALD8	ALD20
Australian Cedar/ Spotted Gum/ Chestnut	AC25	AC2	AC8	AC20
Australian Cypress/Teak	AAC25	AAC2	AAC8	AAC20
Brazilian Cherry/Jarrah	ABC25	ABC2	ABC8	ABC20
American Cherry/ Brush Box	BB25	BB2	BB8	BB20
Mahogany/ Sydney Blue	AAM25	AAM2	AAM8	AAM20
Maple/Beech/ Pine/Ash	AMB25	AMB2	AMB8	AMB20
Natural/ Tint Base	ATB25	ATB2	ATB8	ATB20
Red Oak	ARO25	ARO2	ARO8	ARO20
Rustic/Ebony	AE25	AR2	AR8	AR20
Tasmanian Oak/ Hardwood	TAO25	TAO2	TAO8	TAO20
Walnut	AW25	AW2	AW8	AW20
White	AWH25	AWH2	AWH8	AWH20
White Oak	AWO25	AWO2	AWO8	AWH20

# TIMBERMATE

**So Good  
You'll Never Know  
It's There**

**Interior Grade  
Water-Based Wood Filler**



**Timbermate®group**

A subsidiary of Timbermate Products (Pty) Ltd.

### U.S. OFFICE:

1042 N. Mountain Suite 291 • Upland, CA 91786  
(855) 500-MATE

[www.timbermategroup.com](http://www.timbermategroup.com)



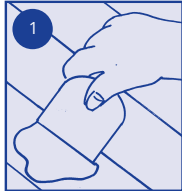
©2019 Timbermate Group

**Easy-to-Use Instructions  
for Patching and Filling.**

# EASY-TO-USE INSTRUCTIONS

## IMPORTANT! PLEASE NOTE:

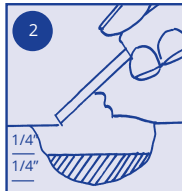
Always match color to putty when it is wet. Timbermate dries lighter than its original color when wet. It will return to its original color once the final topcoat is applied. Use a high content stainless steel or plastic putty knife. If the filler turns black, the putty knife is not high content stainless steel. The black discoloration will sand off. The density of some paint tint/colorants can vary. Some waterborne topcoats may cause the filler to bleach. Always test in a small area with desired tint and topcoat before using. It is advisable to carry out safe work practices, as when you work with dust. Always use an approved dust mask and goggles.



## PATCH

### APPLY

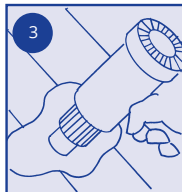
If staining, use Timbermate natural/tint base. Otherwise, match the color of the filler (when wet) to the wood.



For Flooring: Follow your initial sand/leveling process, then apply product directly to floor prior to last sand, using 100-120 grit sandpaper.

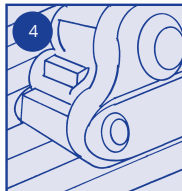
### FILL

If the hole is greater than 1/4" in depth, layer application of product in 1/4" increments. Allow each layer to dry before adding another layer of material.



### DRY\*

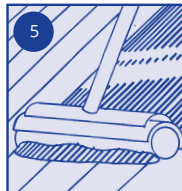
Let dry completely. Using a heat gun can decrease drying time.



Timbermate is properly dry if it sands to the consistency of a fine powder. If it clogs your sandpaper, it is not dry.

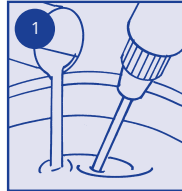
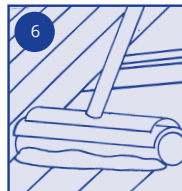
### STAIN

Apply stain.



### FINISH

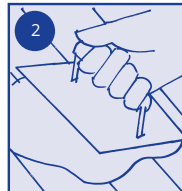
Apply final finish coat.



## TROWEL FILL

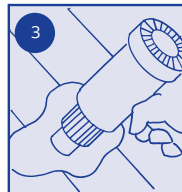
### MIX

If staining, use Timbermate natural/tint base, otherwise match the color of the filler (when wet) to the wood. Mix in a tub with warm water (a mixer attached to a heavy-duty drill is ideal). Slowly pour the water in as you mix—usually about 15% by water weight. Mix until it has the consistency of toothpaste.



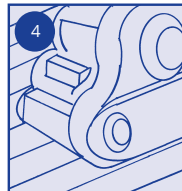
### APPLY

Apply product just before the final sand with a plastic trowel or a rubber float across the grain over the entire floor. Make sure the filler is forced into deep crevices. Do not apply too heavy; a small amount goes a long way. Remove all excess material. Return excess material to the container for future use.

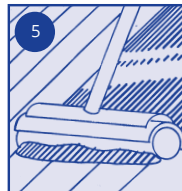


### DRY\*

Let dry completely. Using a heat gun can decrease drying time.

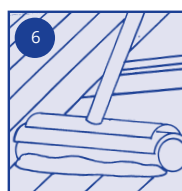


Timbermate is properly dry if it sands to the consistency of a fine powder. If it clogs your sandpaper, it is not dry.



### SAND

Final sand. Be sure to remove all dust and debris. Do not use a sandpaper grit coarser than 120.

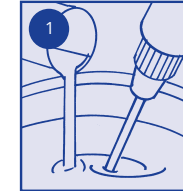


### STAIN

Apply stain.

### FINISH

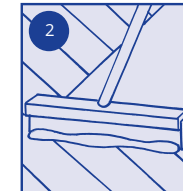
Apply final finish coat.



## GRAIN FILL

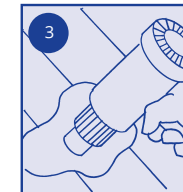
### MIX

If staining, use Timbermate natural/tint base, otherwise match the color of the filler (when wet) to the wood. Mix in a tub with warm water (a mixer attached to a heavy-duty drill is ideal). Slowly pour the water in as you mix—it should have the consistency of thick paint. Allow mixture to dry to the consistency of toothpaste before sealing the tub.



### APPLY

Just before the final hard plate or screening, apply by flooding the floor, and squeegee across the grain over the entire surface. Do not apply too heavy; a small amount goes a long way. Remove all excess material. Return excess material to the container for future use.

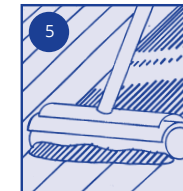


### DRY\*

Let dry completely. Using a heat gun can decrease drying time.

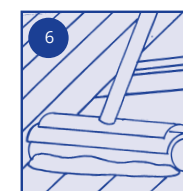


Timbermate is properly dry if it sands to the consistency of a fine powder. If it clogs your sandpaper, it is not dry.



### SAND

Final hard plate or screen and remove all dust and debris. Do not use a sandpaper grit coarser than 120.



### STAIN & FINISH

Apply stain and final finish coat.

\* DRYING TIME - Approx. 30 minutes dependent upon the size of the fill. For large holes, fill holes 1/4" at a time. Allow to dry between each layer.