



HOLZ IN FORM

UNIQUE WOOD PRODUCTS

TEXTURED PANELS



CATALOGUE

2020/2021



VD-Werkstätten

Deeply textured wood surfaces

VD-Werkstätten specializes in the production of high quality and unique wood products, which can be used for all kinds of interior application.

Founded over 50 years ago as a supplier to the local furniture industry, we have grown through continuous investments and innovations to become a leading manufacturer of deeply textured wood panels internationally.

All products are made in Germany in our factory based in Bad Salzuflen, situated in the heart of the German furniture industry.

Industry, trade and architects

Our customers include renowned manufacturers of the furniture industry, our global trading partners for our Holz in Form products, as well as architects and interior designers.

Constant product development

Our own research and development department, state of the art tool shop, and a cutting-edge production facility are the guarantee for the high quality and uniqueness of our products.

A constant communication and interaction with designers, architects, and industry partners enables us to react immediately to new trends and incorporate those quickly into our product portfolio.

High manufacturing depth

Whether a standard panel, semi-finished parts, or individually packed furniture elements – 130 employees assure a high quality production which satisfies every customer's wish.



Holz in Form

A product of VD-Werkstätten

Holz in Form represents our product range of embossed textured wood panels, which are produced in a unique and elaborated manufacturing process.



A combination of high pressure and heat enables us to create structures with a very resistant surface in different finish options from lacquer to real wood veneer.

Inspired by the nature

Holz in Form panels are inspired by the distinctive structures of natural and man-made textures, combining natural materials with an innovative manufacturing technology.

We are constantly striving to create new surfaces and to open up new ways of application in interior design.

Advantages

- High form stability
- Resistant surface
- Reliable supply
- Diverse design possibilities

Be inspired by a unique collection that sets the standards and is known far beyond the borders of Europe.





2602 Flamed Wood
Page 5



2588 Burned Wood
Page 9



2578 Rough Old Wood
Page 13



2512 Old Nature
Page 15



2491 Antikwood
Page 19



2487 Borke
Page 21



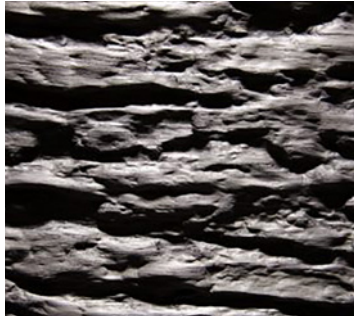
2590 Chopped Wood
Page 25



2584 Smooth Bark
Page 29



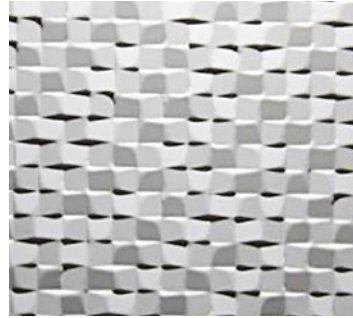
2468 Spalt
Page 31



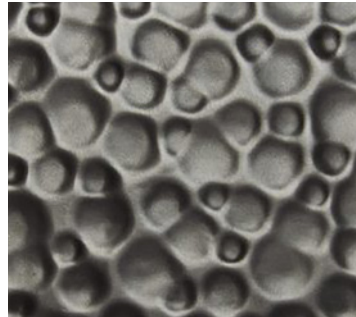
2596 Rinde
Page 35



2511 Blockwood
Page 37



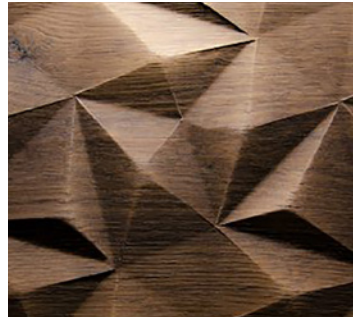
2553 Paillette
Page 39



2450 Pluto
Page 43



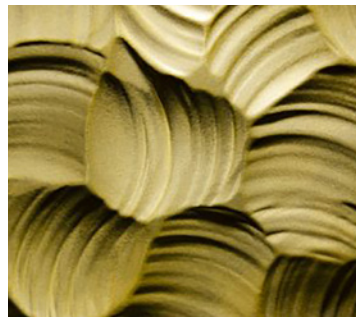
2561 Small Diamond
Page 47



2536 Diamond
Page 49



2551 Big Diamond
Page 53



2508 Rocks
Page 57



2252 Schilf
Page 59



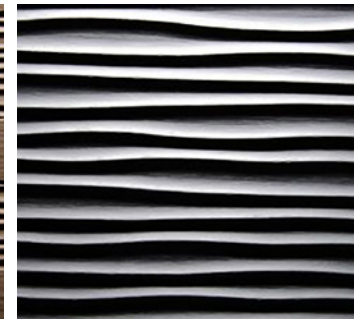
2201 Wave
Page 61



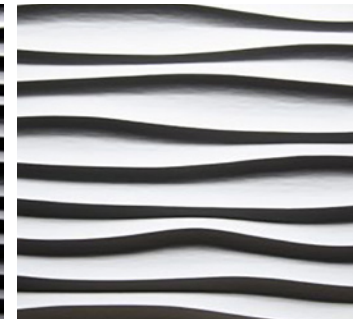
2261 Sisal
Page 63



2395 Python
Page 67



2306 Dune
Page 68



2344 Ocean
Page 69



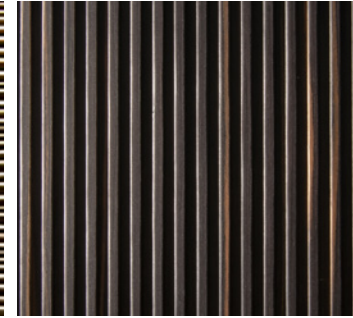
2369 Flame
Page 73



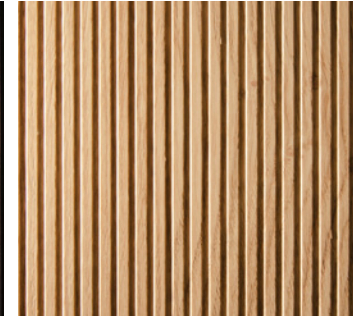
2451 Split
Page 75



2432 Groove
Page 77



2610 Light
Page 78



2608 Match
Page 79



2609 Bar
Page 81



2643 Straight
Page 82



2552 Trapez
Page 83



2567 Deep Groove II
Page 85



Old Nature Tabletop
Page 87



Burned Wood Tabletop
Page 89



Chopped Wood Tabletop
Page 89



Sauna panel
Page 89



2602 Flamed Wood

PDF
Data
Sheet

PDF
Drawing



Black

Flamed Wood represents charred wood without being actually burned. The burned optic is gained by the special embossing process of multiple veneer layers. Flamed wood is deeper than Burned wood.

Board size	2450 x 1050 / 3135 x 1270 mm	Coreboard	Black MDF, Particle board
Thickness	9 mm / 20 mm	Repetition	No repetition
Finish	Clear matt lacquered	Embossment	One-sided







2588 Burned Wood

PDF
Data
Sheet

PDF
Drawing



Black



Ash effect lacquered

Burned Wood represents charred wood without being actually burned. The burned optic is gained by the special embossing process of multiple veneer layers.

Board size 3135 x 1270 mm

Thickness 19,5 mm

Finish Raw, unlacquered

Coreboard Plywood

Repetition No repetition

Embossment One-sided







Oak rustic



Oak smoked



Larch smoked

Rough Old Wood represents the surface of washed out wood.
The deep surface has a rather smooth than raw touch.

Board size 3135 x 1270 mm

Thickness 18,5 mm

Finish Raw, unlacquered

Coreboard Plywood

Repetition No repetition

Embossment One-sided





2512 Old Nature

PDF
Data
Sheet
PDF
Drawing



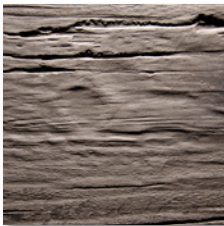
Oak nature



Old oak



Oak smoked



Oak grey



Bog oak

Old Nature displays the rustic surface of old reclaimed wooden beams. The authentic wood surface is created by a combination of real wood veneers and a distinctive embossment.

Board size 2450 x 1050 / 1050 x 2450 mm
3135 x 1270 mm

Thickness 6,5 mm / 10 mm / 19,5 mm

Finish Clear matt lacquered

Coreboard Black MDF

Repetition No repetition

Embossment One-sided







2491 Antikwood

PDF
Data
Sheet

PDF
Drawing



Rose Oak



Spruce antique



Antique grey



Walnut antique

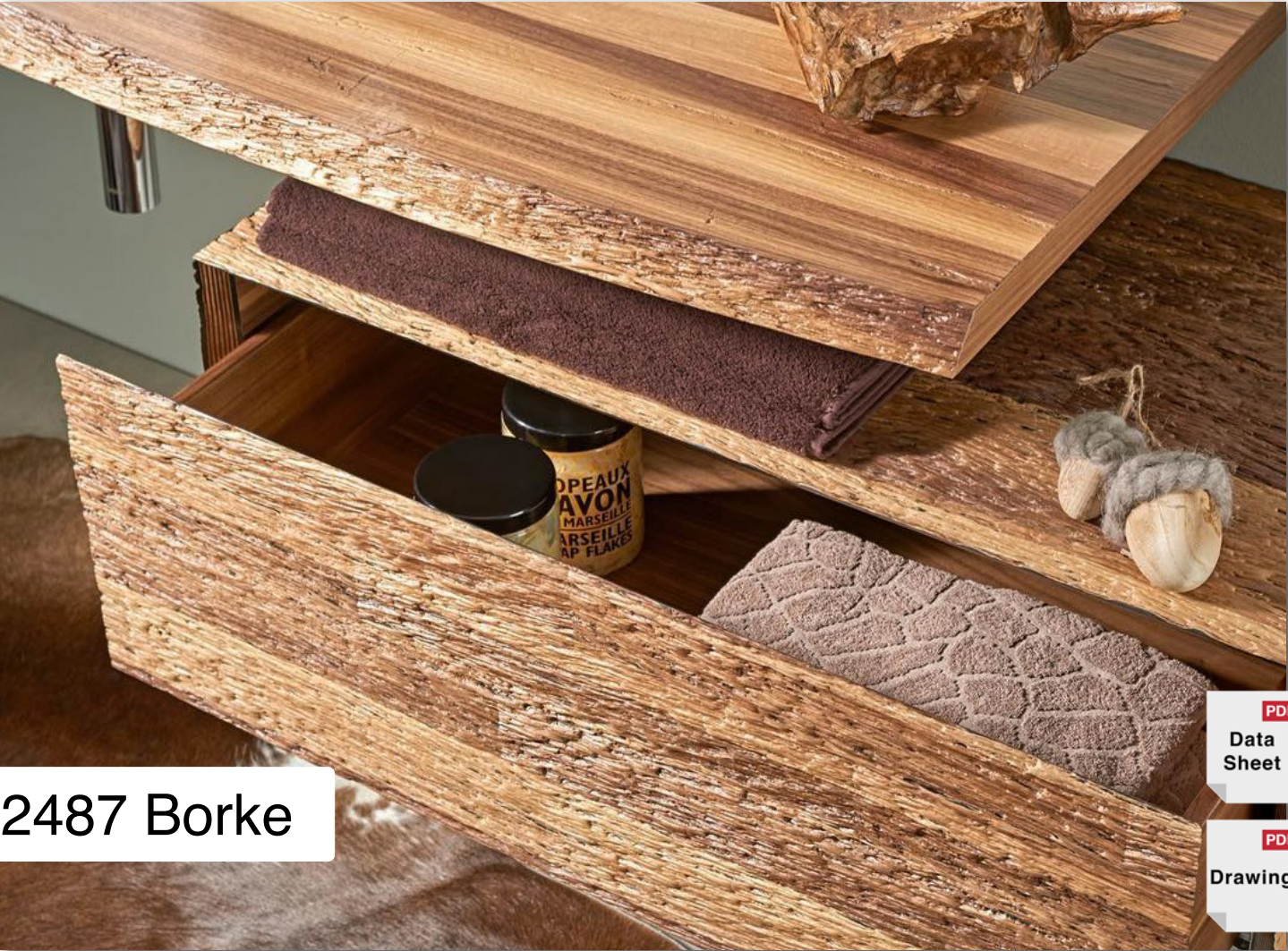


Larch smoked

Antikwood creates the look of old, rustic wood by combining real wood veneers with a surface that appears slightly brushed.

Board size	3135 x 1270 / 1270 x 3135 mm	Coreboard	Multilayer veneer / Plywood*
Thickness	5 mm / 18,5 mm*	Repetition	No repetition
Finish	Raw, unlacquered	Embossment	One-sided





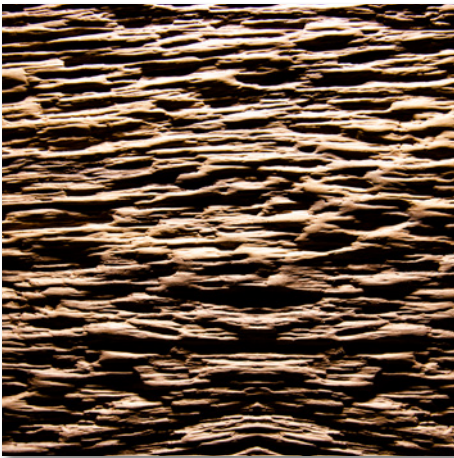
2487 Borke

PDF
Data
Sheet

PDF
Drawing



Antique grey



Antique walnut



Larch smoked

Borke displays the outer layer of tree bark as authentic as possible. In the deepest sections, the veneer is intentionally cracked to intensify the depth effect.

Board size 2450 x 1050 mm

Thickness 21 mm

Finish Raw, unlacquered

Coreboard Plywood

Repetition No repetition

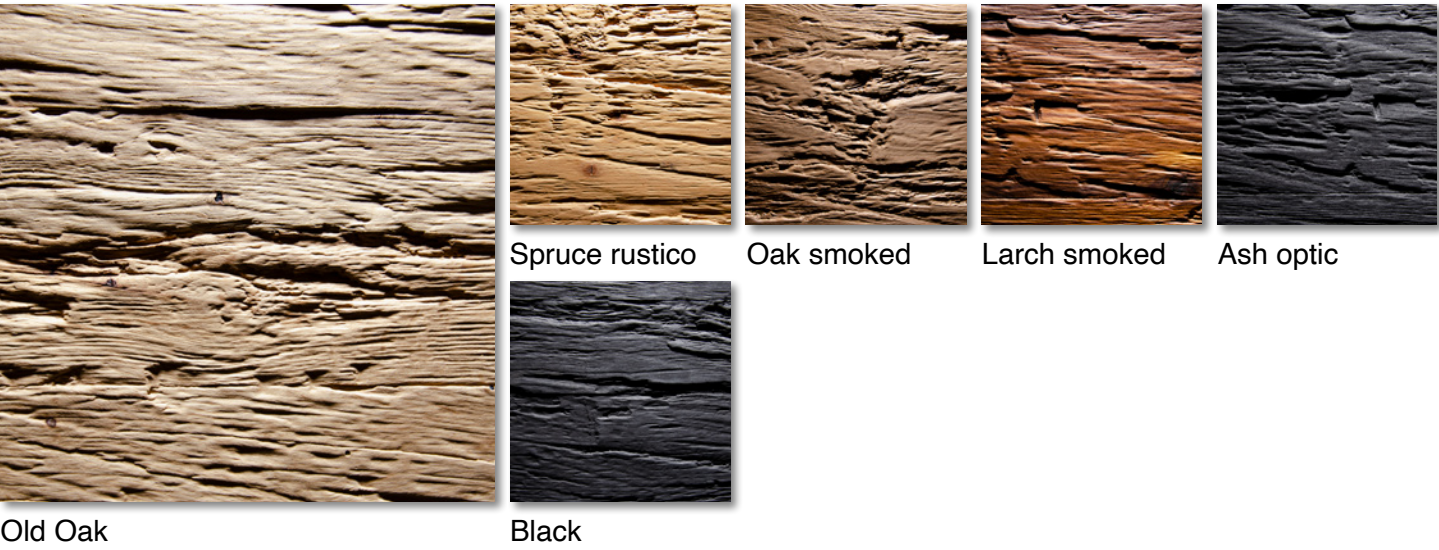
Embossment One-sided







2590 Chopped Wood



Chopped Wood is embossed like old wood, which has traditionally been chopped by hand. Due to the strong embossment, the surface is closed and more resistant.

Board size	3135 x 1270 mm	Coreboard	Plywood
Thickness	18,5 mm	Repetition	No repetition
Finish	Raw, unlacquered	Embossment	One-sided







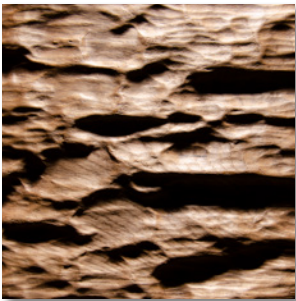
2584 Smooth Bark

PDF
Data
Sheet

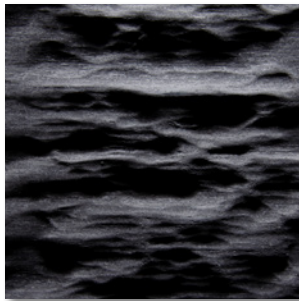
PDF
Drawing



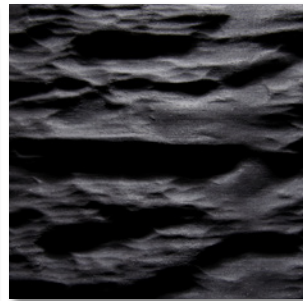
Oak rustic



Oak smoked



Black



Black matt lacquered

Smooth Bark displays the even and smooth bark of a tree. The depressions are up to 5,6 mm deep, which creates an interesting play of light and shadow.

Board size 2450 x 635 / 2450 x 1050 mm
Thickness 21 mm
Finish Raw, unlacquered

Coreboard Plywood
Repetition No repetition
Embossment One-sided





2468 Spalt

PDF
Data
Sheet

PDF
Drawing



White



Old Oak



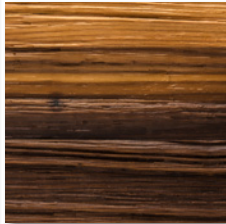
Knob Oak



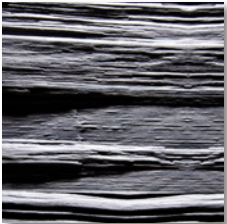
Walnut antique



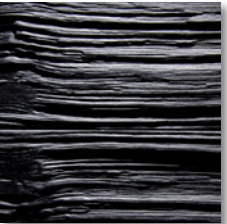
Heartwood walnut



Smoked larch



Grey



Black

Spalt represents wood which has been split traditionally with an ax along the wood grain. Unlike real splitted wood, Spalt can be used as full sized panels.

Board size 2450 x 635 / 2450 x 1050 mm

Coreboard Plywood

Thickness 21 mm

Repetition No repetition

Finish Raw, unlacquered

Embossment One-sided



Project: Atlantica Dream Ressorts Rhodes
Architect: Kydoniatis Architects & Associates





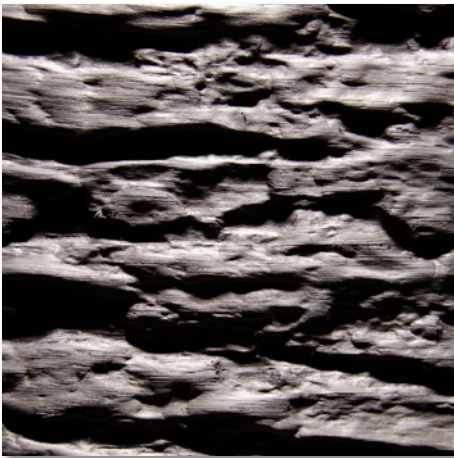


2596 Rinde

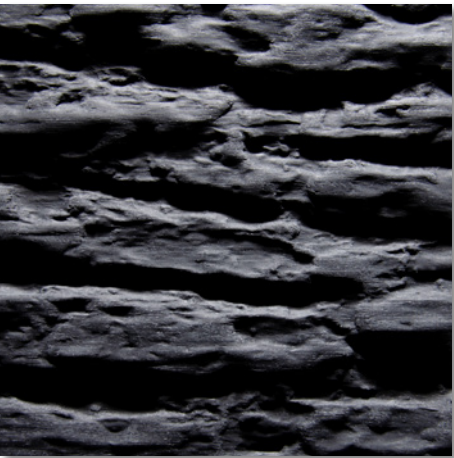
PDF
Data
Sheet
PDF
Drawing



Oak smoked



Oak grey



Ash Optic lacquered

Rinde displays real oak bark as authentic as possible without cracking and crumbling. The surface is already lacquered and available as a full sheet.

Board size 2450 x 1050 mm

Thickness 22 mm

Thickness Clear matt lacquered

Coreboard Multi layer construction

Repetition No repetition

Embossment One-sided





Blockwood recalls the surface of deep structured driftwood. With an embossment depth of up to 8,8 mm, Blockwood is the deepest structure within all authentic structures.

Board size	3135 x 1270 / 1270 x 3135 mm 2450 x 635 mm*	Coreboard	Particle board / Plywood*
Thickness	21 mm	Repetition	No repetition
Finish	Raw, unlacquered	Embossment	One-sided





2553 Paillette

PDF
Data
Sheet

PDF
Drawing



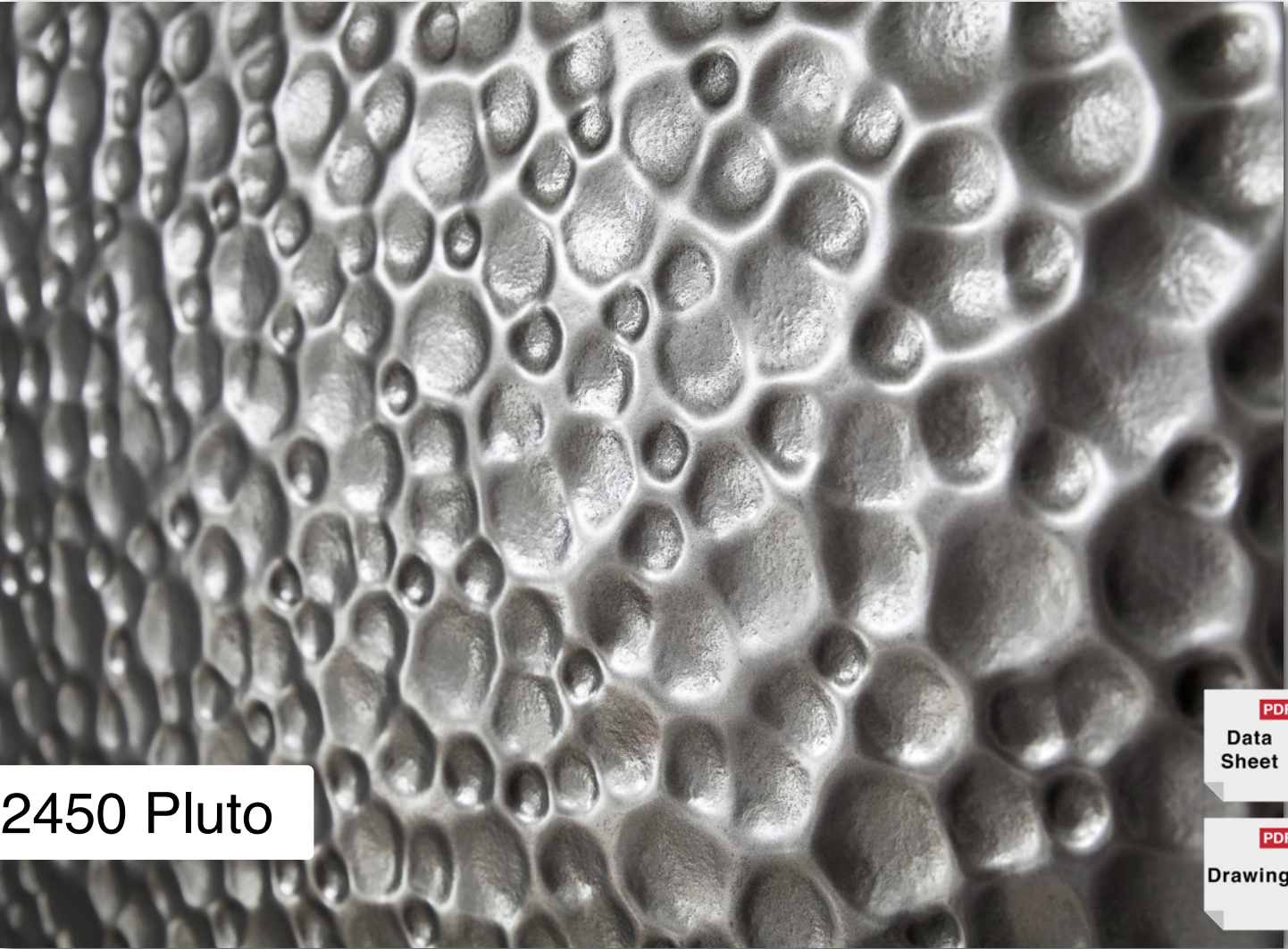
Lacquerable foil

Paillette looks like real jewelry-sequins with its special slender and flat surface. Each sequin has the size of approx. 10 x 10 mm and creates interesting effects of light and shadow.

Board size	2450 x 1050 / 3135 x 1270 mm	Coreboard	Particle board
Thickness	18,5 mm	Repetition	No repetition
Finish	Raw, unlacquered	Embossment	One-sided







2450 Pluto

PDF
Data
Sheet

PDF
Drawing



Lacquerable foil

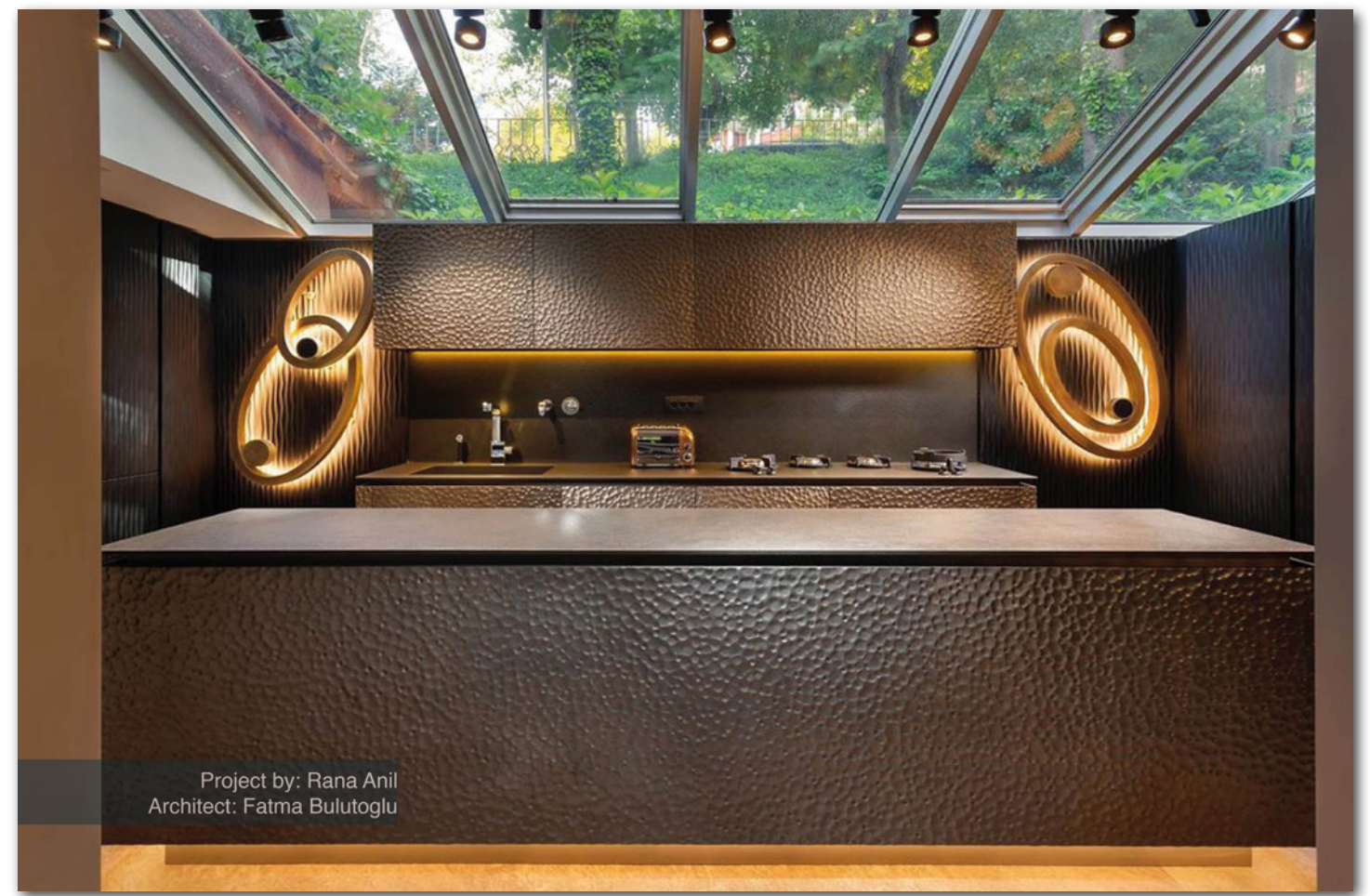
Pluto shows the characteristic crater surface of the correspondent planet.
The randomly arranged craters create a very organic and authentic impression.

Board size	3135 x 1270 mm	Coreboard	Particle board
Thickness	18,5 mm	Repetition	No repetition
Finish	Raw, unlacquered	Embossment	One-sided

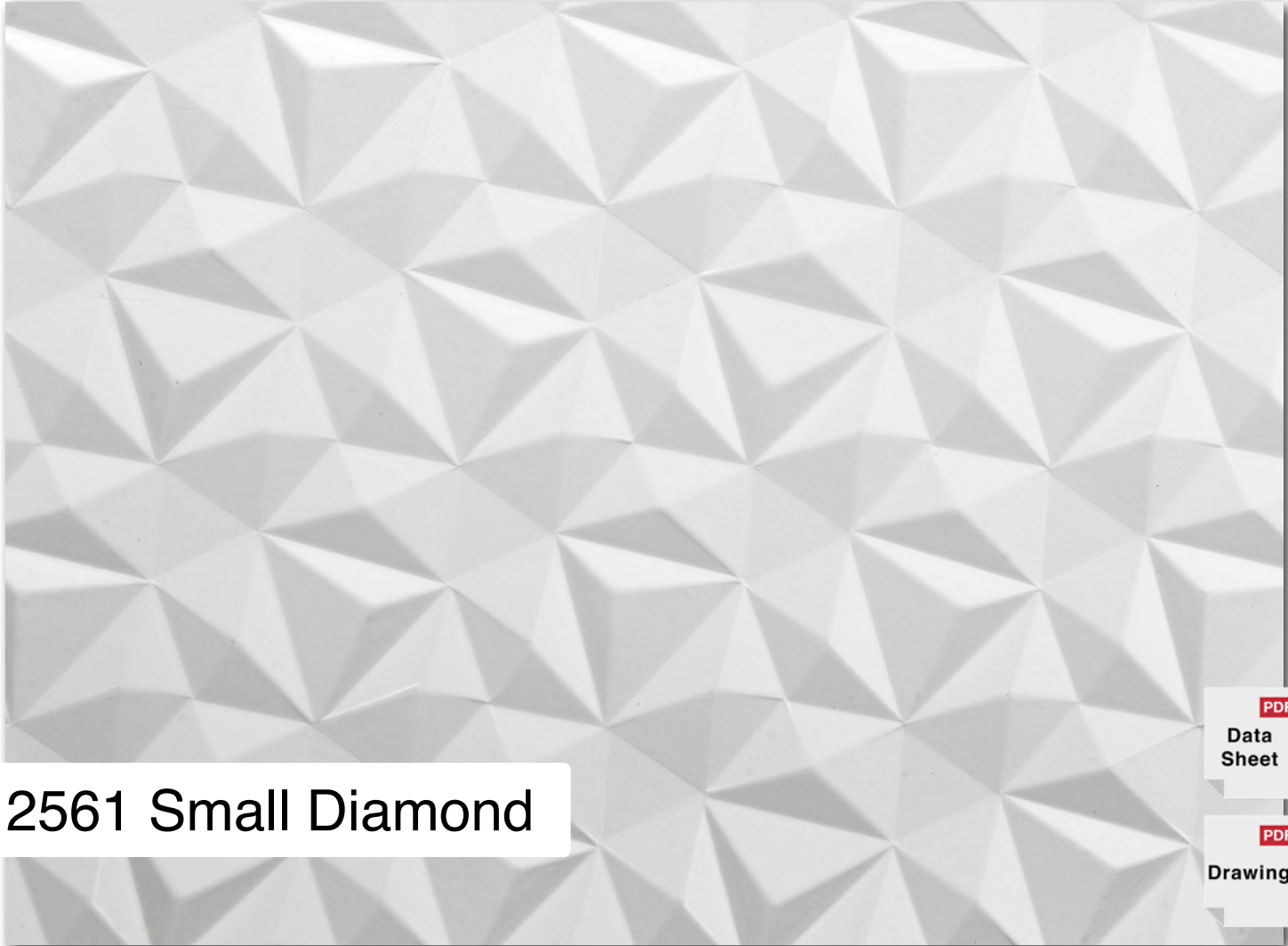




Project by: Rana Anil
Architect: Fatma Bulutoglu



Project by: Rana Anil
Architect: Fatma Bulutoglu



2561 Small Diamond

PDF
Data
Sheet

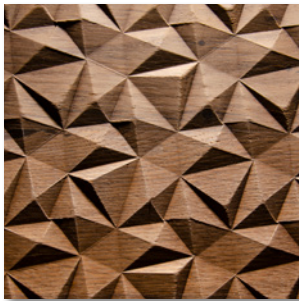
PDF
Drawing



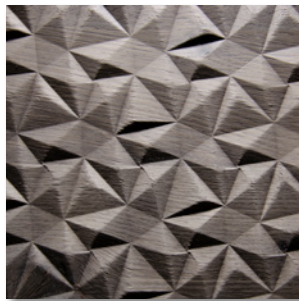
Lacquerable foil



Knob oak



Oak smoked



Oak grey

Small Diamond is inspired by the perfect facets of real diamonds. The combination of several tri-angles with different side lengths creates an interesting geometric structure.

Board size	2450 x 1050 mm	Coreboard	Particle board
Thickness	18,5 mm	Repetition	2448,8 x 964,5 mm (111,31 x 96,45)
Finish	raw, unlacquered	Embossment	One-sided





2536 Diamond

PDF
Data
Sheet

PDF
Drawing



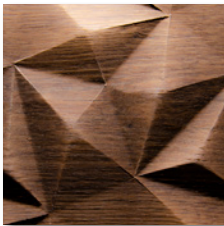
Lacquerable foil



Knob oak



Old oak



Oak smoked



Oak grey

Diamond is inspired by the perfect facets of real diamonds. The combination of several triangles with different side lengths creates an interesting geometric structure.

Board size 3135 x 1270 mm

Thickness 18,5 mm

Finish Raw, unlacquered

Coreboard Particle board

Repetition 3122 x 1164 mm (223 x 194)

Embossment One-sided



© Copyrights Steigenberger Hotels and Resorts





2551 Big Diamond

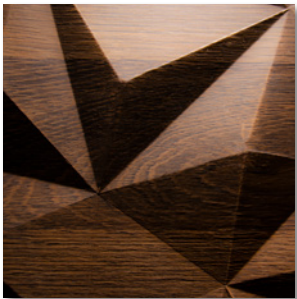
PDF
Data Sheet
PDF
Drawing



Lacquerable foil



Knob oak



Oak smoked



Oak grey

Big Diamond is inspired by the perfect facets of real diamonds. The combination of several triangles with different side lengths creates an interesting geometric structure.

Board size	2450 x 1050 mm	Coreboard	Plywood
Thickness	34 mm	Repetition	2490 x 862 mm (498 x 431)
Finish	Raw, unlacquered	Embossment	One-sided







2508 Rocks



Lacquerable foil

Rocks is inspired by the texture of Hollow stones as normally found in the inside of caves.

Board size	1242 x 3100 mm	Coreboard	Particle board
Thickness	21 mm	Repetition	1242 x 3100 mm
Finish	Raw, unlacquered	Embossment	One-sided

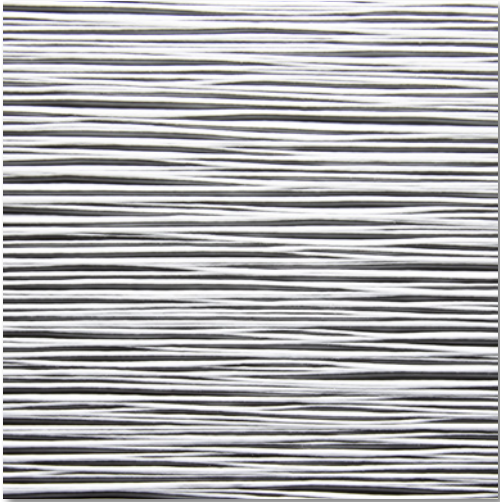




2252 Schilf

PDF
Data
Sheet

PDF
Drawing



Lacquerable foil



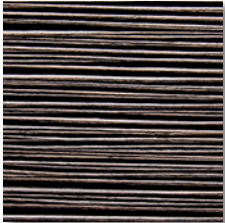
Light Oak



Walnut



Grey



Oak chocolate



Ebony Maro



Black

Schilf reminds of the structure of thin reeds. The fine and shallow surface is straight-lined, elegant and has despite of its fineness a very accurate profile.

Board size 2450 x 1050 / 1050 x 2450 mm
3135 x 1270 / 1270 x 3135 mm

Thickness 4,5 mm / 18,5 mm

Finish Raw, unlacquered

Coreboard MDF

Repetition No repetition

Embossment One-sided

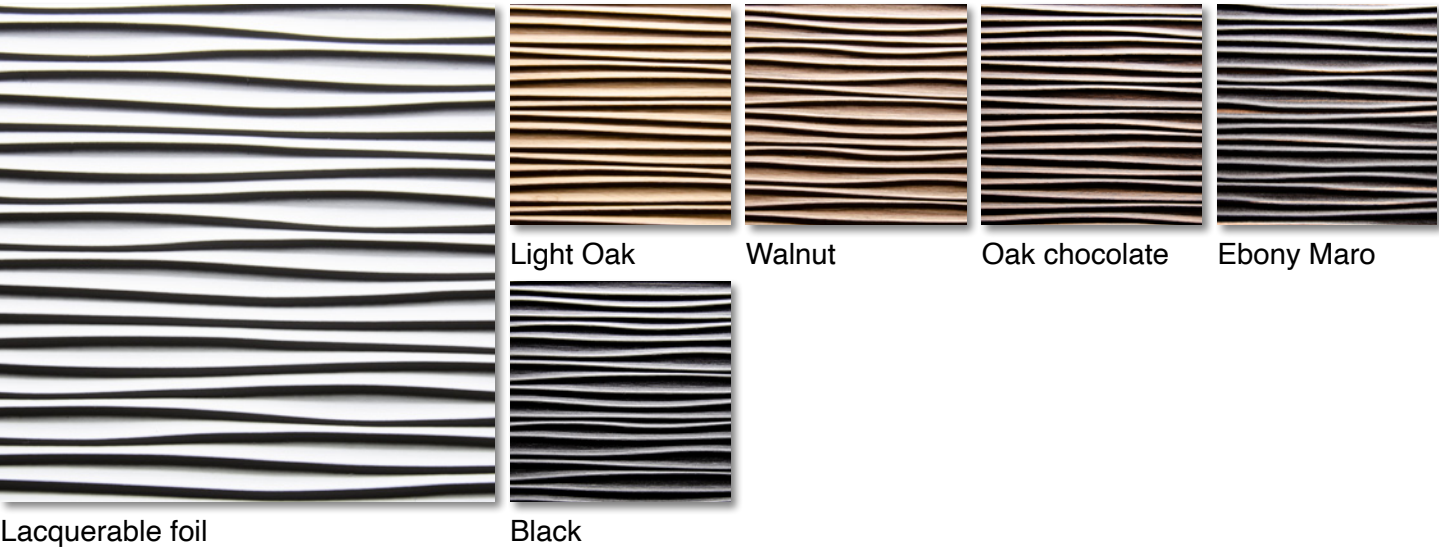




2201 Wave

PDF
Data
Sheet

PDF
Drawing



Wave recalls the natural wave movement of water. The slightly swung structure in combination with specially coloured veneers creates an elegant and modern appearance.

Board size	2450 x 1050 / 1050 x 2450 mm 3135 x 1270 / 1270 x 3135 mm	Coreboard	MDF
Thickness	4,5 mm / 18,5 mm	Repetition	3125 x 1250 mm (625 x 625) 1250 x 3125 mm (625 x 625)
Finish	Raw, unlacquered	Embossment	One-sided

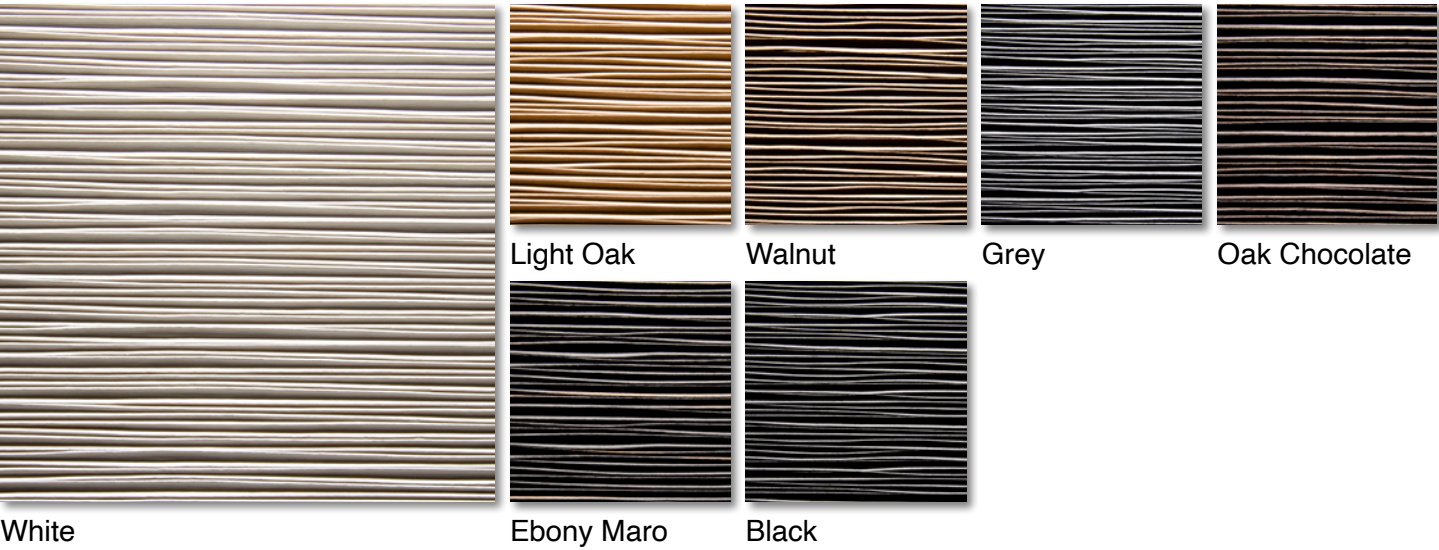




2261 Sisal

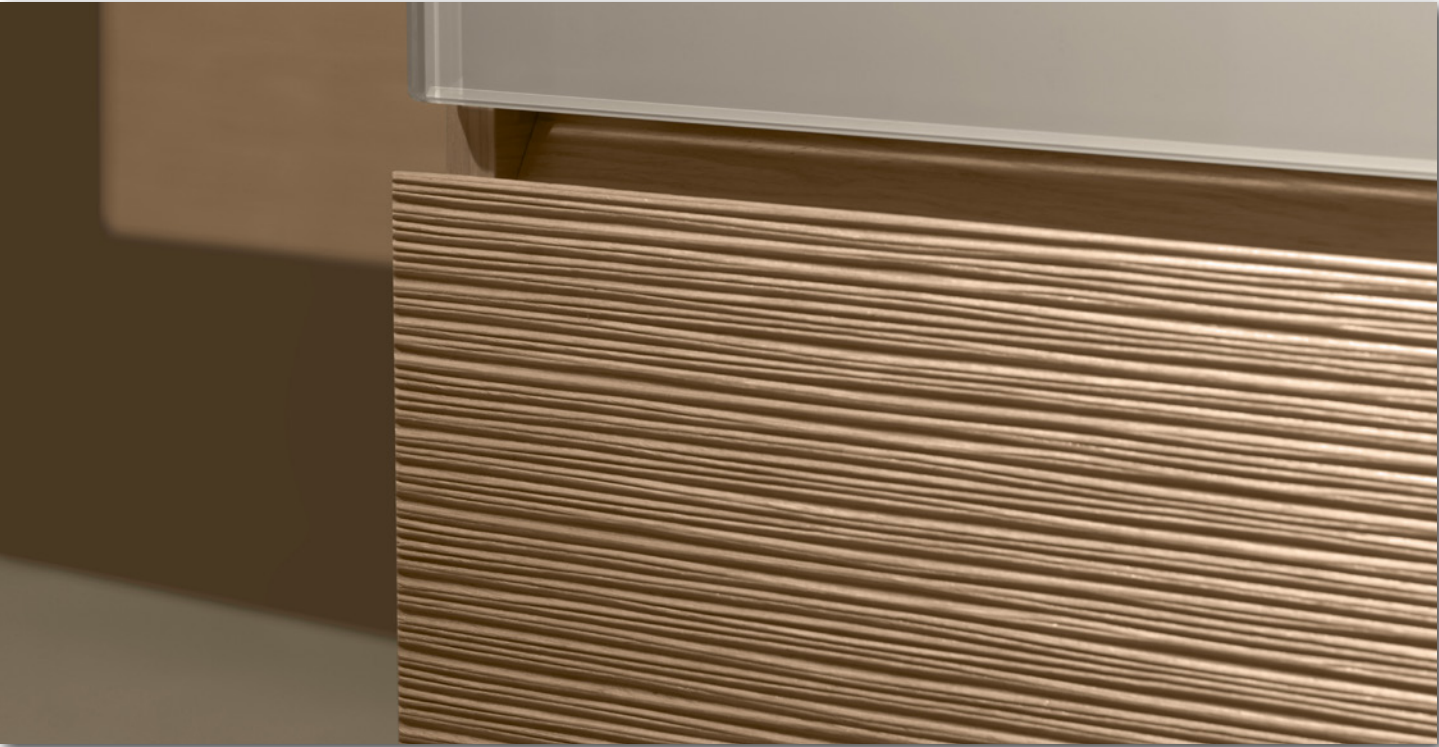
PDF
Data
Sheet

PDF
Drawing

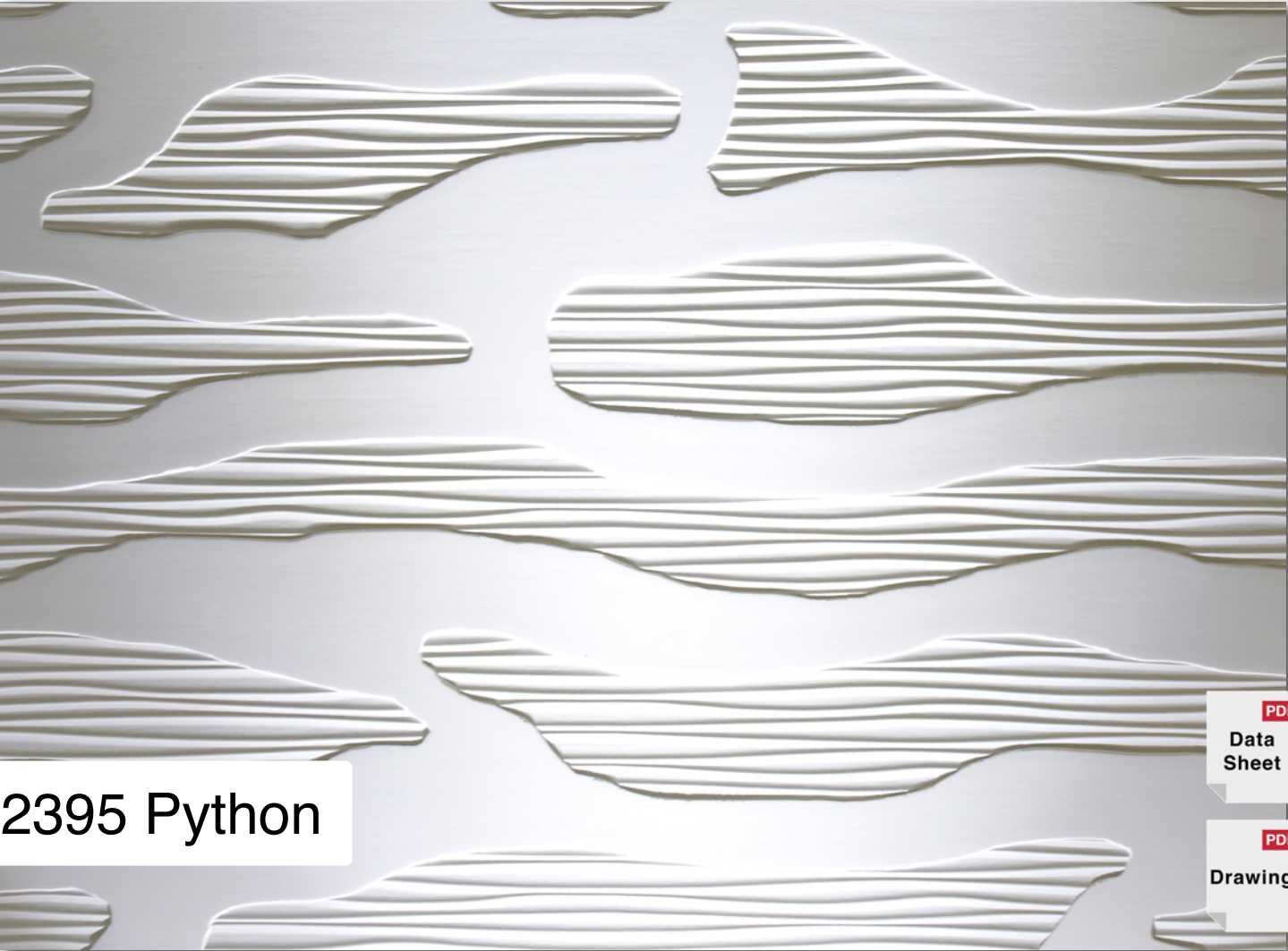


Sisal represents the leaves of the Sisal-Agave. The fine surface which flows slightly wavy appears very fine and elegant with an structure of up to 1,3 mm deepness.

Board size	2450 x 1050 / 1050 x 2450 mm 3135 x 1270 / 1270 x 3135 mm	Coreboard	MDF
Thickness	4,5 mm / 18,5 mm	Repetition	No repetition
Finish	Raw, unlacquered	Embossment	One-sided

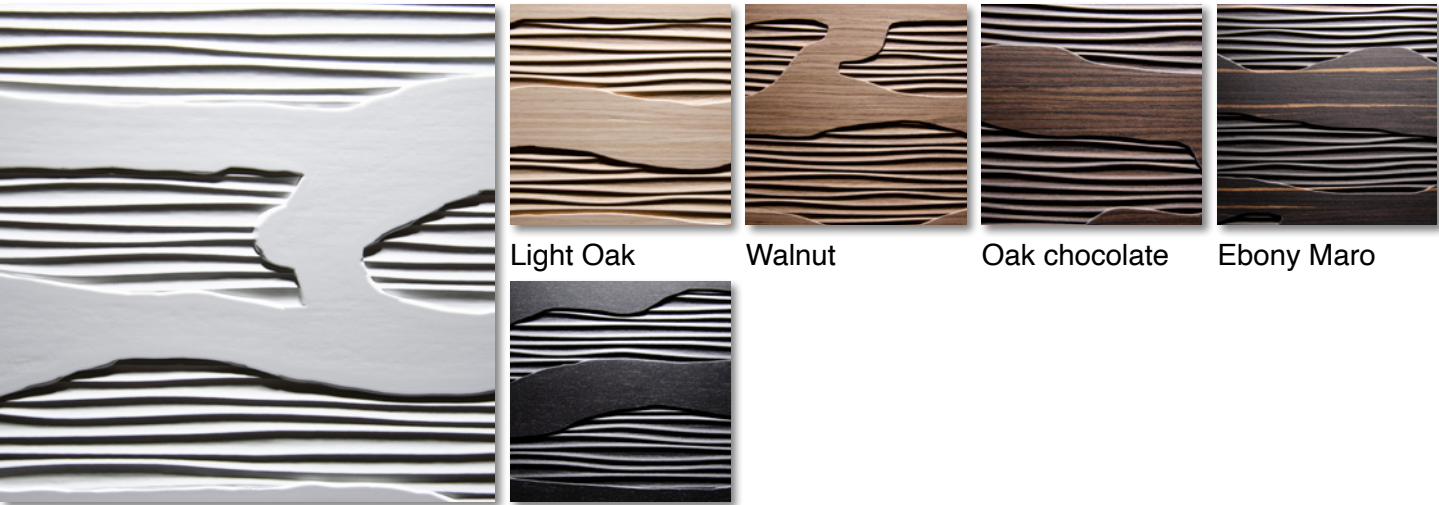






2395 Python

PDF
Data Sheet
PDF
Drawing



Lacquerable foil Light Oak Walnut Oak chocolate Ebony Maro Black

Python is inspired by the eye-catching skin of the royal python. The structure combines smooth areas with embossed zones in 2201 Wave texture.

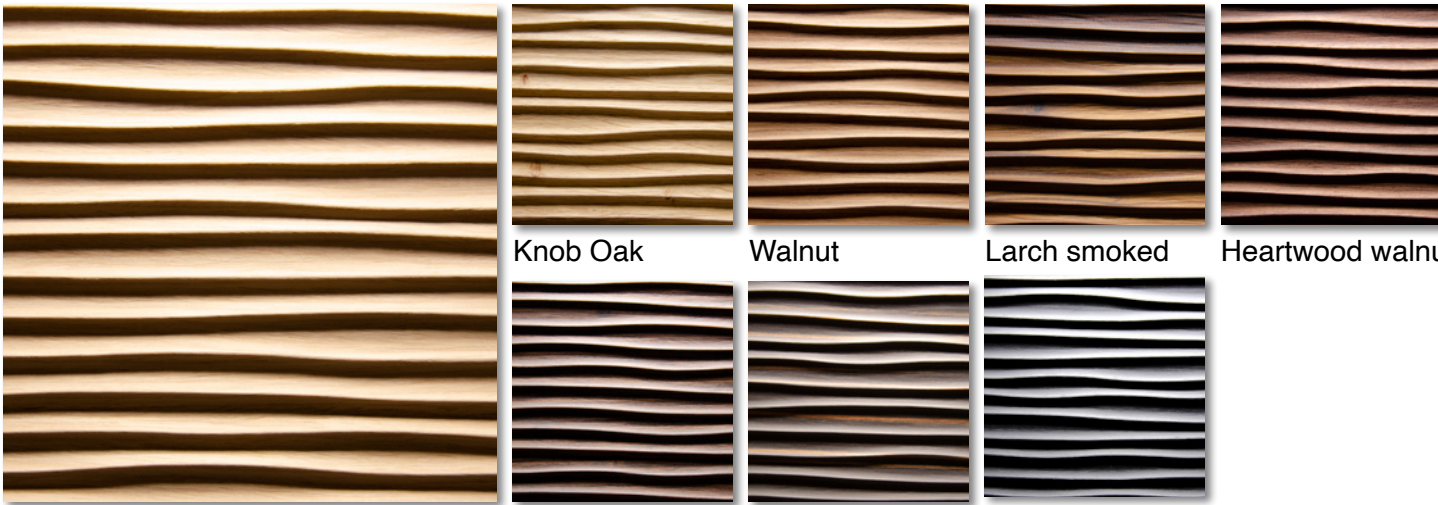
Board size	1050 x 2450 mm	Coreboard	MDF
Thickness	4,5 mm / 18,5 mm	Repetition	1050 x 2450 mm
Finish	Raw, unlacquered	Embossment	One-sided



Design: C13 Architecture d'interieur
Photo: Julien Carosi

2306 Dune

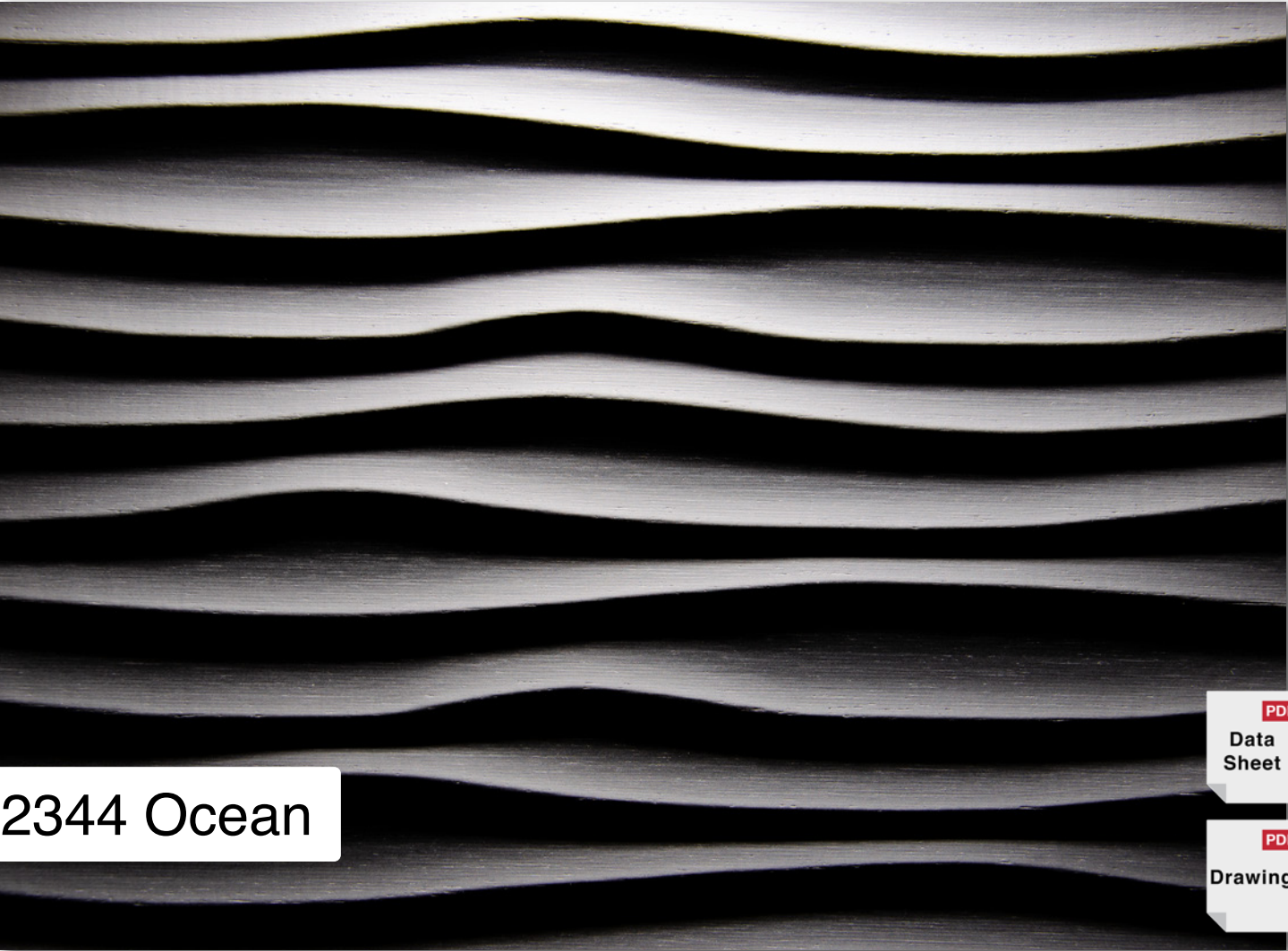
PDF
Data Sheet
PDF
Drawing



Light Oak Knob Oak Walnut Larch smoked Heartwood walnut Oak chocolate Ebony Maro Light Oak

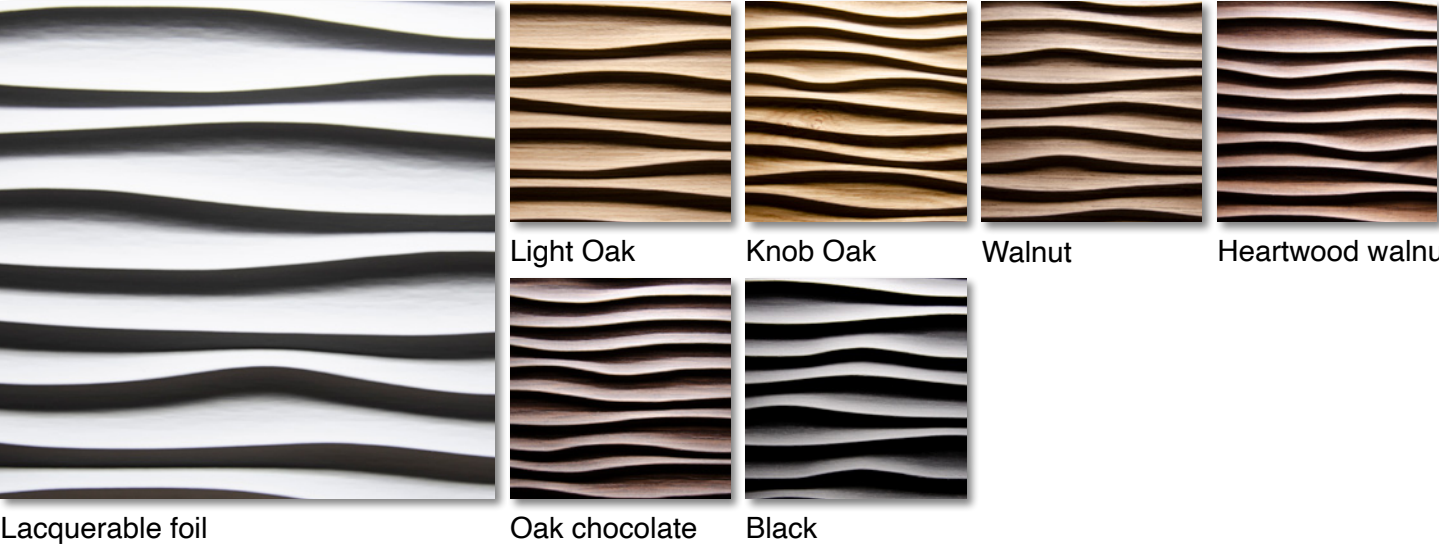
Dune is inspired by the uniform marks which are left by the wind on sand dunes. The waves are slightly curved with valleys around 10 - 15 mm width between the ridges.

Board size	2450 x 1050 / 1050 x 2450 mm 3135 x 1270 mm	Coreboard	MDF
Thickness	6 mm / 18,5 mm	Repetition	No repetition
Finish	Raw, unlacquered	Embossment	One-sided



2344 Ocean

[PDF Data Sheet](#)
[PDF Drawing](#)



Ocean is inspired by the big and rough wave movements of the ocean. The extra deep and wide structure has valleys of up to 25 mm width.

Board size	2450 x 1050 / 1050 x 2450 mm 3135 x 1270 / 1270 x 3135 mm	Coreboard	MDF
Thickness	9 mm / 21 mm	Repetition	3125 x 1250 mm (625 x 625) 1250 x 3125 mm (625 x 625)
Finish	Raw, unlacquered	Embossment	One-sided







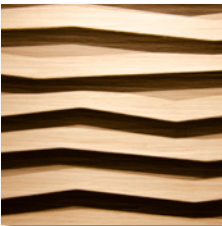
2369 Flame

PDF
Data
Sheet

PDF
Drawing



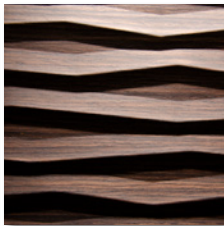
Lacquerable foil



Light Oak



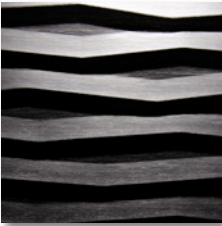
Walnut



Oak chocolate



Heartwood walnut



Black

Flame represents the natural movement and geometry of a flame. The uneven arrangement creates an interesting play of light and shadow.

Board size 2450 x 1050 / 1050 x 2450 mm
3135 x 1270 / 1270 x 3135 mm

Thickness 9 mm / 21 mm

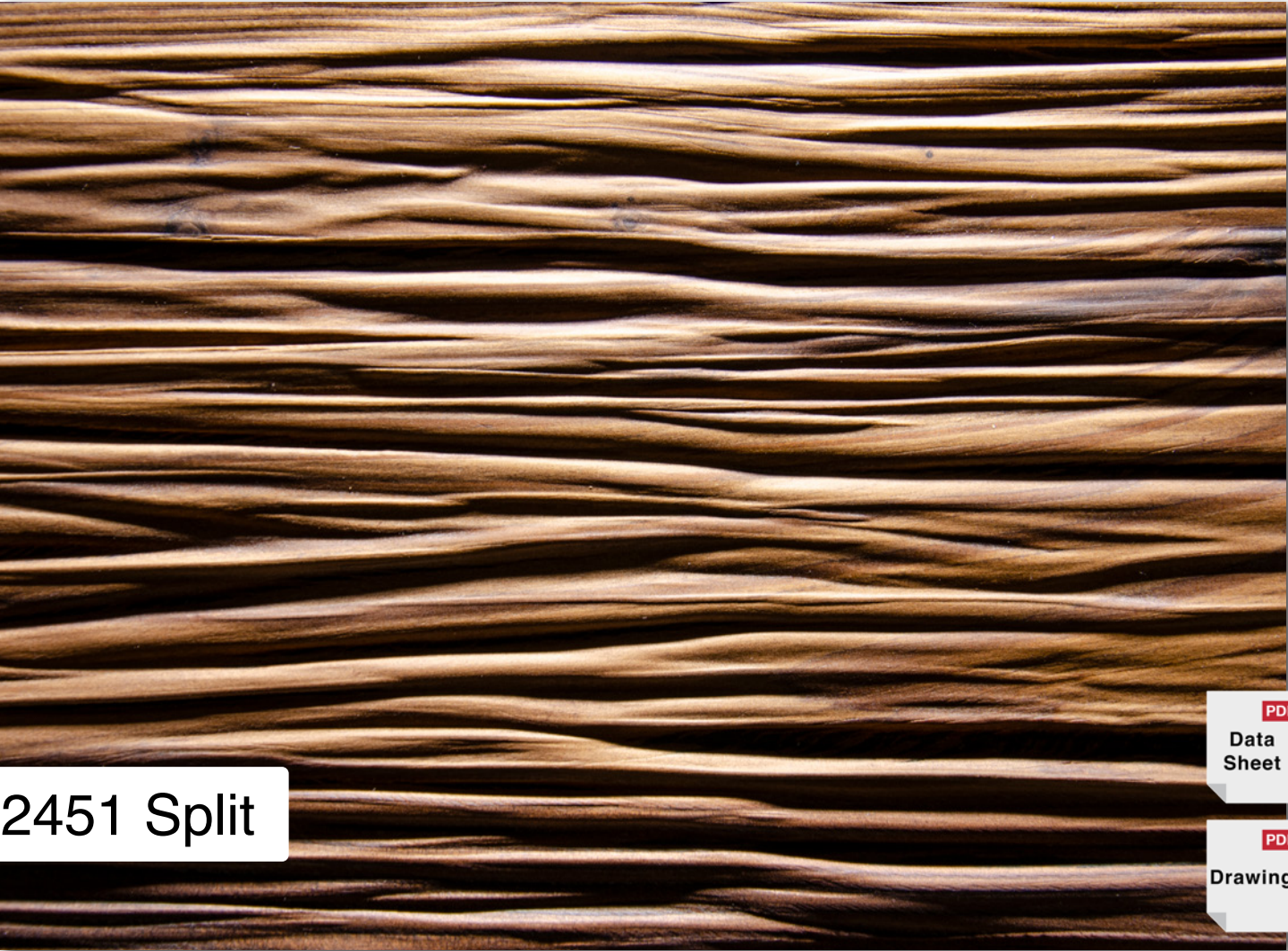
Finish Raw, unlacquered

Coreboard MDF

Repetition 3125 x 1250 mm (625 x 625)
1250 x 3125 mm (625 x 625)

Embossment One-sided





2451 Split

PDF
Data
Sheet

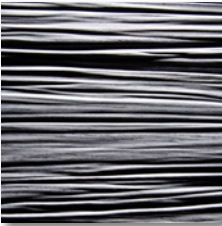
PDF
Drawing



White



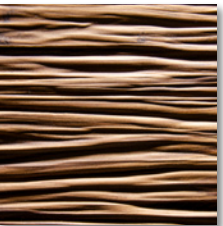
Black



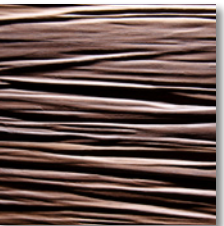
Grey



Knob Oak



Larch smoked



Heartwood walnut

Split is inspired by the structure of splintered wood. The deep structure appears authentic and real.

Board size 3135 x 1270 / 1270 x 3135 mm

Thickness 21 mm

Finish Raw, unlacquered

Coreboard Plywood

Repetition No repetition

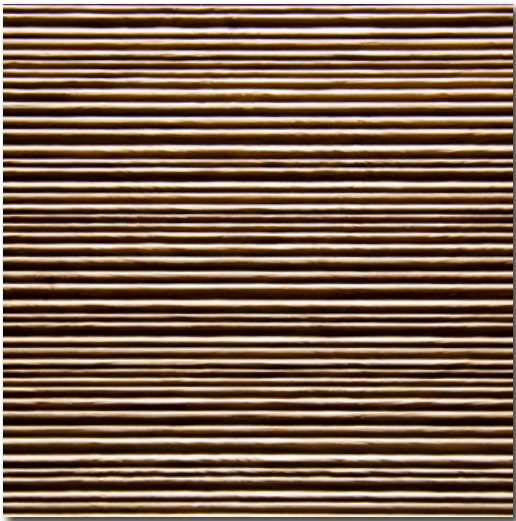
Embossment One-sided



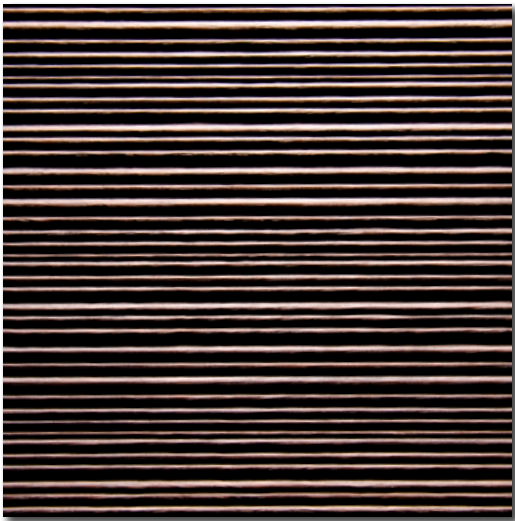


2432 Groove

PDF
Data Sheet
PDF
Drawing



Knob Oak



Heartwood walnut

Groove is an elegant and classic corrugated profile. The distance from ridge to ridge varies approximately between 3 - 5 mm.

Board size	2450 x 1050 / 1050 x 2450 mm 1270 x 3135 mm	Coreboard	Particle board
Thickness	18,5 mm	Repetition	No repetition
Finish	Raw, unlacquered	Embossment	One-sided



2610 Light

PDF
Data Sheet
PDF
Drawing



White



Black



Light Oak



Knob Oak



Heartwood walnut

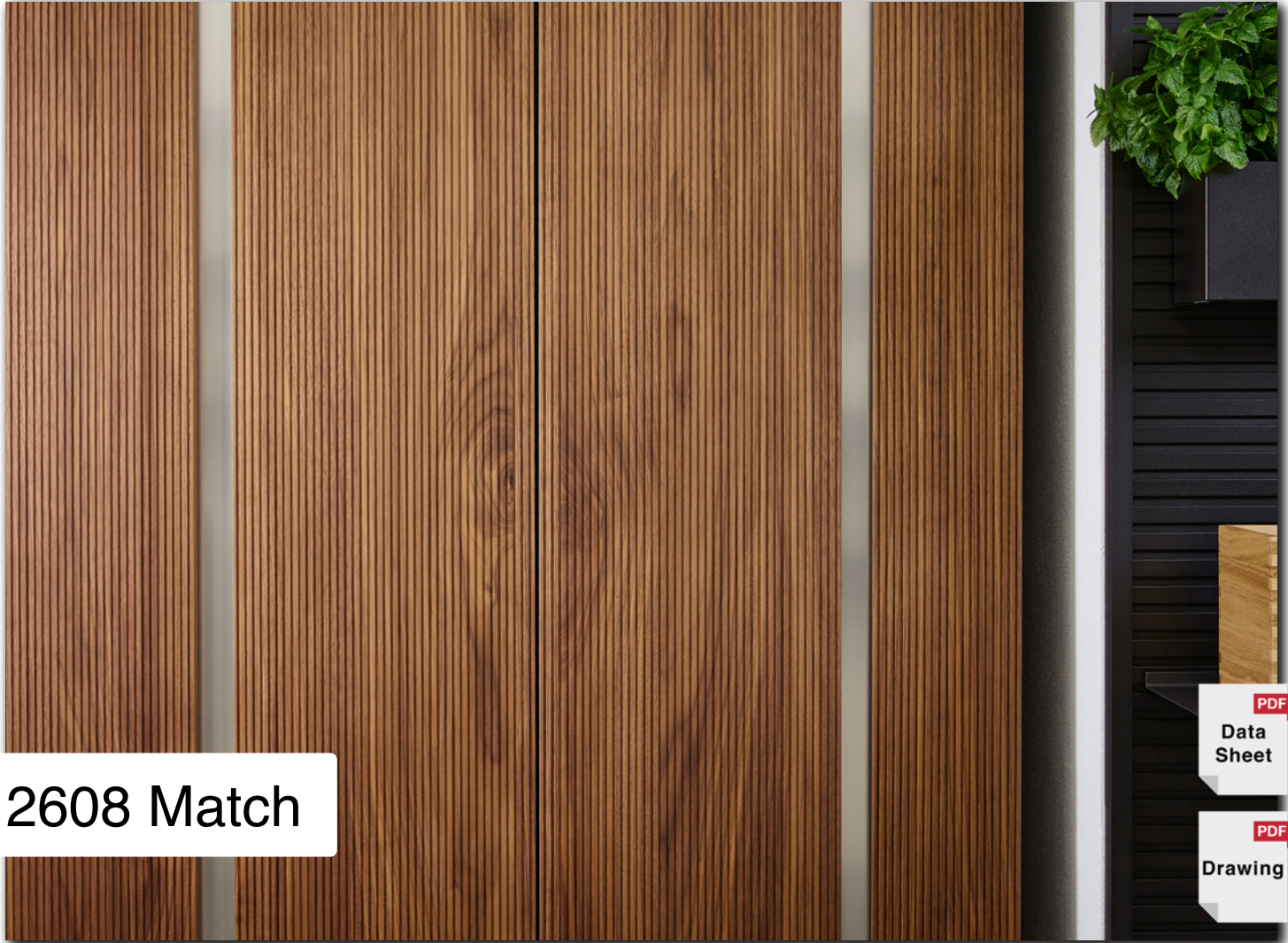


Maro Ebony

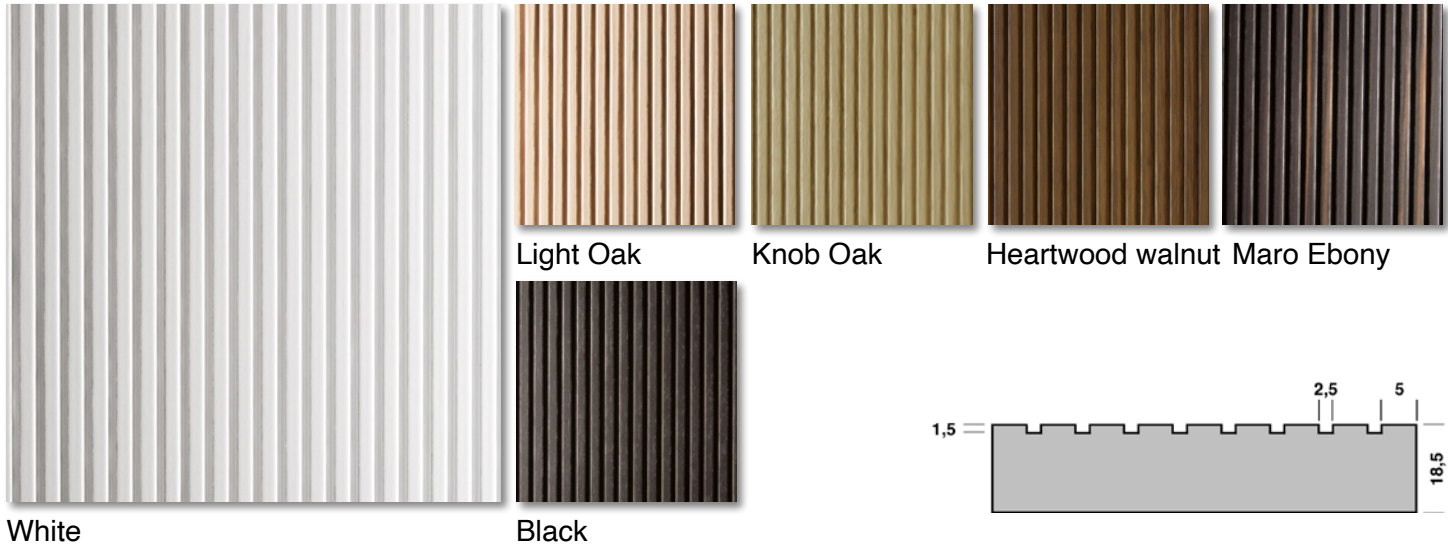


Light is a straight, bar-shaped looking structure. The embossing has gap of 2,5 mm and a width of 5 mm. The depth of this embossment is 1,0 mm.

Board size	3135 x 1270 mm	Coreboard	Particle board
Thickness	18,5 mm	Repetition	No repetition
Finish	Raw, unlacquered	Embossment	One-sided



2608 Match



Match is a straight, bar-shaped looking structure. The embossing has gap of 2.5 mm and a width of 5 mm. The depth of this embossment is 1,5 mm.

Board size	3135 x 1270 mm	Coreboard	Particle board
Thickness	18,5 mm	Repetition	No repetition
Finish	Raw, unlacquered	Embossment	One-sided





2609 Bar

PDF
Data Sheet
PDF
Drawing



White Black Light Oak Knob Oak Heartwood walnut Maro Ebony

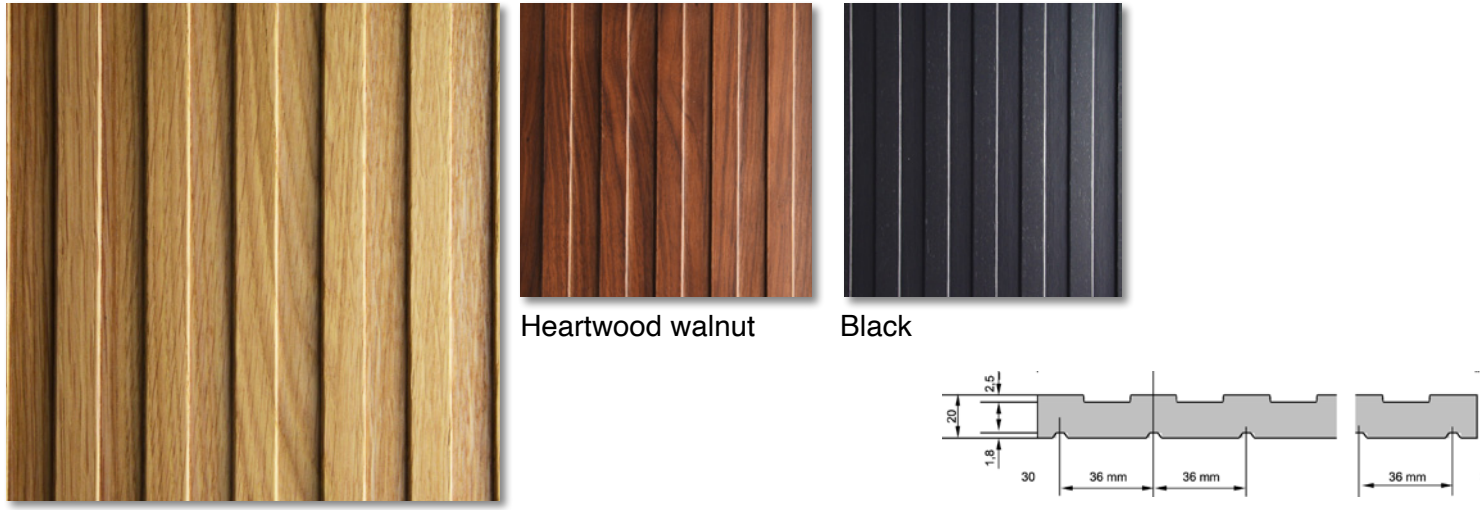
Bar is a straight, bar-shaped looking structure. The embossing has gap of 5 mm and a width of 5 mm. The depth of this embossment is 2,5 mm.

Board size	3135 x 1270 mm	Coreboard	Particle Board
Thickness	19 mm	Repetition	No repetition
Finish	Raw, unlacquered	Embossment	Two-sided



2643 Straight

PDF
Data Sheet
PDF
Drawing



Knob oak Heartwood walnut Black

Straight is a linear structure with parallel running struts with a gap of 18mm. The structure has a gap of 18 mm and width of 18 mm.

Board size	3135 x 1270 mm	Coreboard	Particle board
Thickness	20 mm	Repetition	No repetition
Finish	Raw, unlacquered	Embossment	Two-sided



2552 Trapez

PDF
Data
Sheet

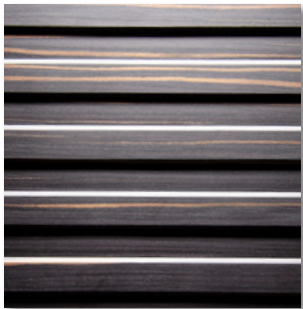
PDF
Drawing



White



Light Oak



Maro Ebony



Bog Oak

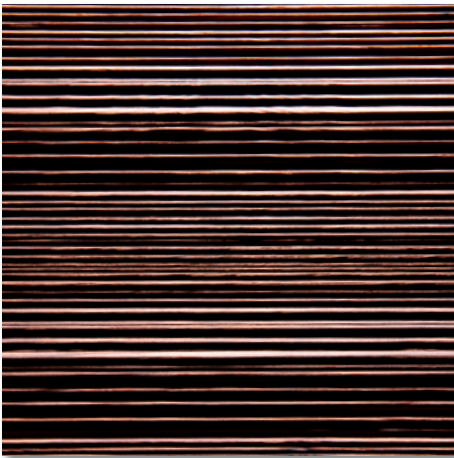
Trapez is a straight-lined and flat structure with trapeze-shaped lamella, which have a width of approximately 15 mm.

Board size	2450 x 1050 / 1050 x 2450 mm 3135 x 1270 / 1270 x 3135 mm	Coreboard	Plywood
Thickness	18,5 mm	Repetition	No repetition
Finish	Raw, unlacquered	Embossment	One-sided

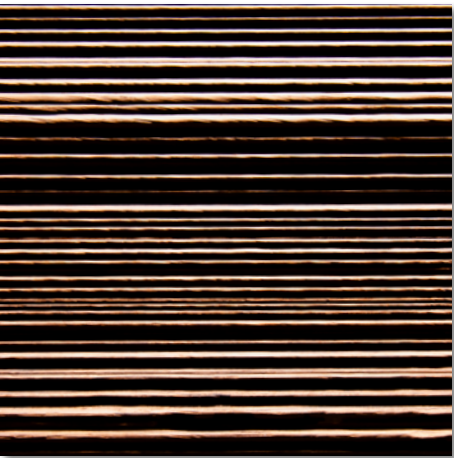




Oak rustic



Larch smoked



Oak smoked

Deep Groove II is an elegant and classic corrugated profile. Additionally, the structure is slightly waved when looking at the profile.

Board size 3135 x 1270 / 1270 x 3135 mm
Thickness 22,5 mm
Finish Raw, unlacquered

Coreboard Plywood
Repetition No repetition
Embossment One-sided





Tabletop Old Nature



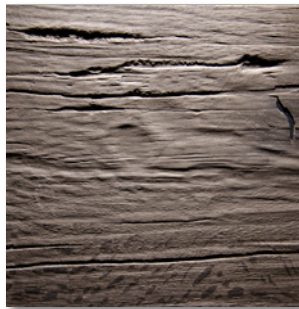
Oak nature



Old oak



Oak smoked



Oak grey

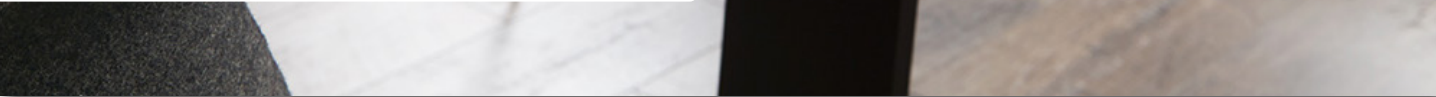
The tabletop Old Nature is a combination of two textured panels. 2512 Old Nature is used for the top and 2487 Borke is used as an embossed live-edge. Available as finished pieces.

Board size	Max. 3135 x 1270 mm	Edge crosswise	Flat veneer End grain
Coreboard	Particle Board	Edge lengthwise	2487 Borke Live-Edge
Thickness	38 mm		90° straight 35° straight 35° waved
Finish	Clear matt lacquered		





Tabletop Burned Wood



Black matt lacquered



Ash effect lacquered

The **tabletop Burned Wood** is a combination of two textured panels. 2588 Burned Wood is used for the top and 2584 Smooth Bark is used as an embossed live-edge. Available as finished pieces.

Board size	Max. 3135 x 1270 mm	Edge crosswise	Flat veneer
Coreboard	Particle Board	Edge lengthwise	Smooth Bark Live-Edge
Thickness	38 mm		90° straight
Finish	Lacquered		35° straight
			35° waved





Tabletop Chopped Wood



Old oak



Larch smoked

The **tabletop Chopped Wood** is embossed like old wood and is used for the top and for the edges aswell.

Board size	Max. 3135 x 1270 mm	Edge crosswise	Flat veneer
Coreboard	Particle Board	Edge lengthwise	Chopped Wood
Thickness	38 mm		90° straight
Finish	Lacquered		35° straight





Saunapanel



2512 Old Nature



2491 Antikwood



2468 Spalt

Holz in Form sauna panels comply with emission levels and have been tested according to the Austrian standard ÖNORM M 6219-1 for saunas. Only real wood veneers are utilized.

Board size	2450 x 625 mm	Surfaces	Hemlock
Coreboard	Plywood		Knob Oak
Thickness	16 mm		Stone Pine
Finish	Raw, unlacquered		Spruce Rustico
			Robinia



Handling Instructions



Storage

- Boards must be stored on a pallet completely flat at anytime
- Protect the entire boards with a cover board from the top
- Always store ample vented, dry and moisture/frost free
- Boards with veneer surface must be sun-protected
- Do not store/transport boards standing
- Put a foam film or corrugated paper between the boards to avoid pressure marks

Processing & Screwing

- Assure adequate conditioning / time to settle before processing the boards
- During processing boards need to seat solidly with at least 50% of the direct mechanical irradiated area
- We recommend primary drilling before using screws to avoid splitting
- For boards with a repeating pattern, please consider saw notches on the frontside of the board
- Thin boards up to 4,5mm thickness can be bend to a radius of 600 mm or more

Sawing

- Use sharp hard metall sawing blades
- Work with a low sawing feed rate
- Do not set the saw blade too high
- Scoring is nonessential

Milling & Drilling

- Use hard metall tools for milling and profile cutting
- All standard drilling tools for woodworking can be used

Edges & Lacquering

- Please follow our detailed instructions in the brochure “Edge and Surface”
- Always lacquer raw panels and lacquer both sides equally
- Panels with a particle board or MDF core always need to be edge-banded
- Missing edge-band can lead to cracks in the material
- We recommend solvent-based 2K PUR lacquer
- Never use regular wall paint on the boards
- All utilized veneers cannot be stained or oiled

Glueing & Bonding

- Standard wood glues and adhesives can be used
- We recommend formaldehyde-free glues
- Always assure that our material has the correspondent counterdraw if glued onto another structure
- Never stick boards directly on the walls. Use appropriate mounting fittings

Packaging

- Holohedral lying on a palette
- Put a foam film between the boards for protection
- For transportation boards must be evenly strapped on palette

Recycling

- Thermal/Energy recovery of the boards is uncomplicated (no PVC)

Edge Processing



Using conventional edge banding machines, leave sufficient excess to allow further refinement.



Refinish the excess length with a profile cutter.



Primarily use small tool profiles. A ball bearing guide ensures a smooth tool guidance.



Use an appropriate sanding block to help with sanding in the narrow surface structures (when necessary).

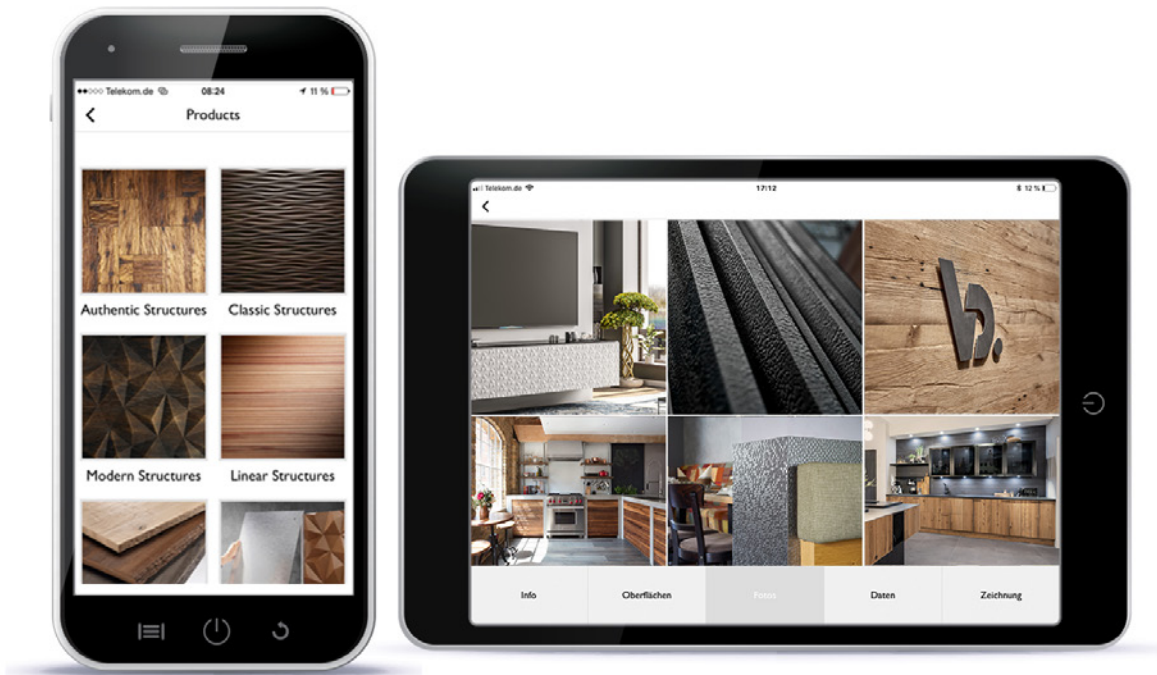


Sand/finish the edge subsequently parallel to structure path with a sanding pad (approx. grain 100).



Finally clean the surface structure with a fine copper wire brush (only for veneer surfaces).

Holz in Form App



Always at your fingertips!

The Holz in Form App is a handy tool, to provide useful information to our distribution partners, architects, interior designers, and everyone interested in our products. We will keep you updated about new products or upcoming trade fairs via push message.

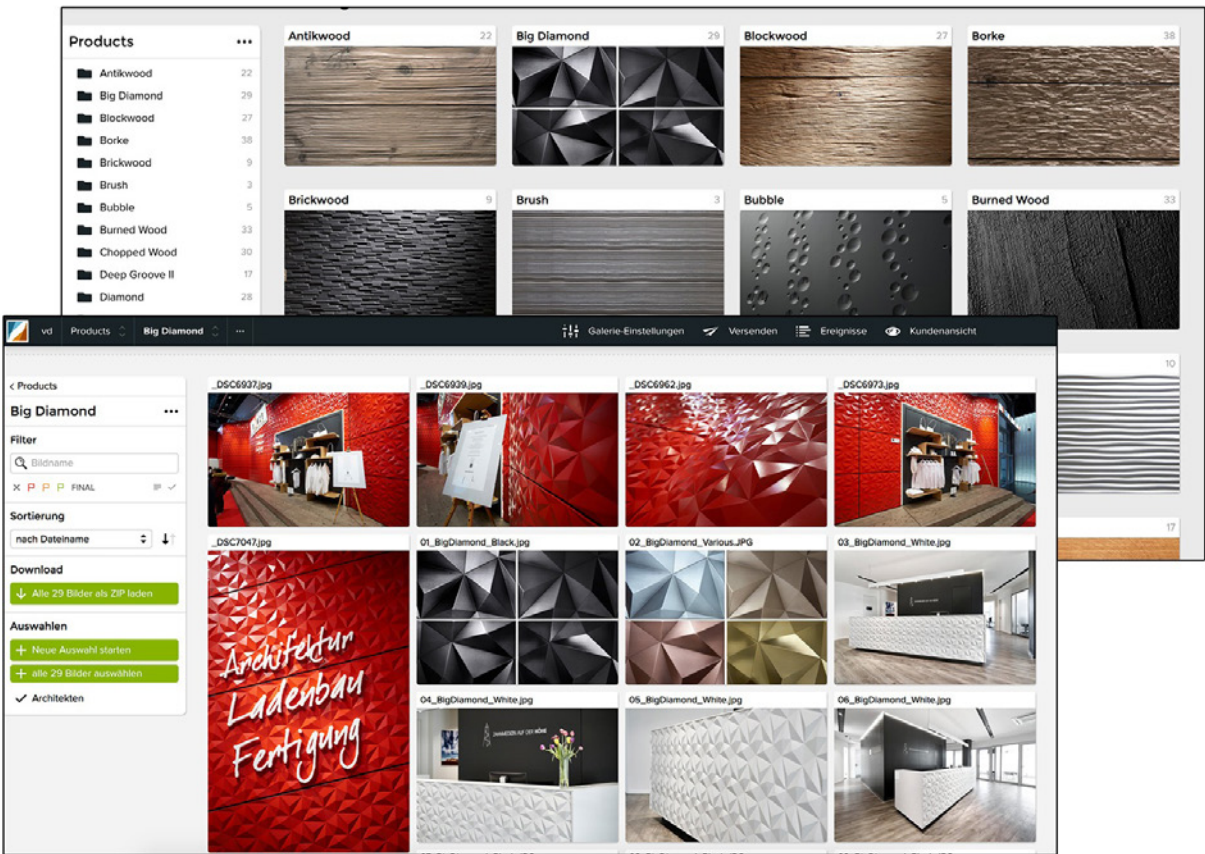
In our app you find:

- Product information
- Technical datasheets
- Technical drawings
- Application images
- Trade show dates

Just search in the appstore „Holz in Form“ or scan the QR-code to download our app on your mobile phone or tablet.



Photobox



Get inspired!

To show you our structures and surfaces in the best way possible, we created our Photobox, where you can browse and download high quality images as well as application examples.

- High resolution images
- Project pictures and inspirations
- Always updated

To access our Photobox please visit

www.vd-holzinform.de/en/media



HOLZ IN FORM



VD-Werkstätten GmbH & Co. KG

Am Hasselbruch 3
32107 Bad Salzuflen
Germany

0049 5208 957 77 0

info@vd-werkstaetten.de
www.vd-holzinform.de

Liability is excluded for all printing errors and omissions. Images are for illustration purposes only.
Colours may differ in print.

Printed: 06.05.2021
Last updated: 06.05.2021



900002