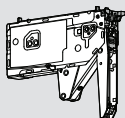
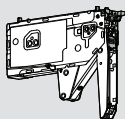


AVENTOS HK top



Wood/Wide Aluminum
Frame Door Application

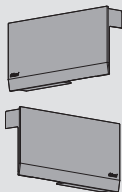
Lift mechanism set



- Lift mechanism (qty 2)
- #7 x 35 mm (1-3/8") wood screw (qty 8)

Power factor	Opening angle	Part no.
36 - 139	107°	22K2300
80 - 240	107°	22K2500
150 - 450	107°	22K2700
270 - 781	107°	22K2900

Cover set

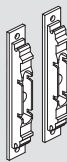


- Right and left cover plate (qty 2)
- Light gray or dark gray color options

Part no.
Cover set
22K8000.NA

Wood or wide alum door hardware set

- Arm assembly mounting plate (qty 2)

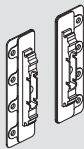


Part no.

Hardware set	20S4200
Inst. screw for wood doors	606N or 606P
Inst. screw for wide alum doors	7072A

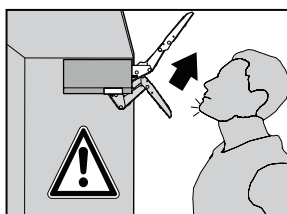
Mounting plate with bracket set

- Left and right mounting plate with bracket
- For large overlay five-piece doors



Part no.

Mounting plate w/ bracket set	20S4F01
-------------------------------	---------



WARNING

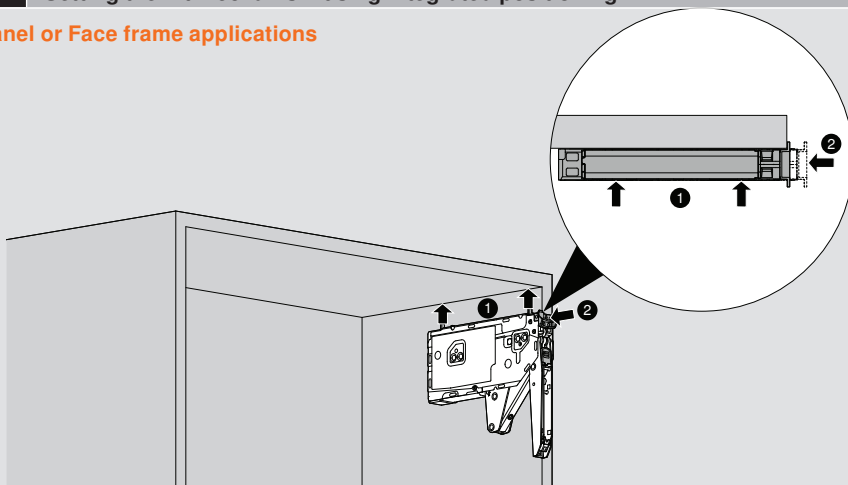
Risk of injury from spring-loaded arm

— Arm has built in safety feature to prevent opening and closing

1

Setting the lift mechanism using integrated positioning

Panel or Face frame applications

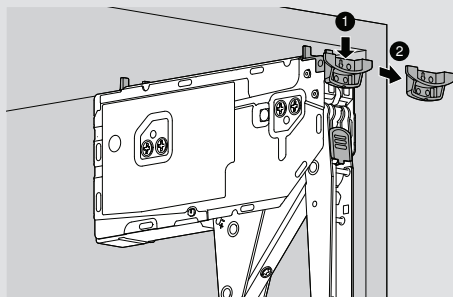
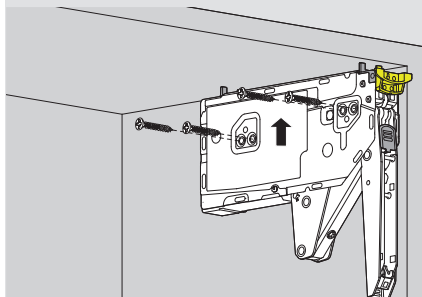


NOTE: Face frame cabinets must be blocked out flush with the frame, or installed with the 22K6001 screw-on face frame bracket, and the max top overlay is 25.4 mm.

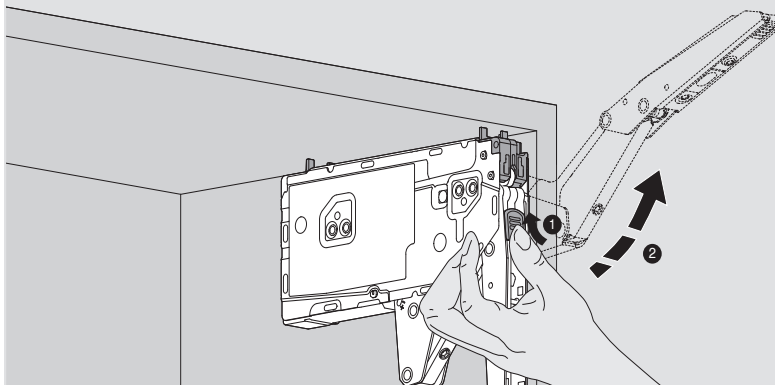
2

Attaching the lift mechanism

Once the lift mechanism is in place, attach to the cabinet using the four wood screws provided. Remove setback template.



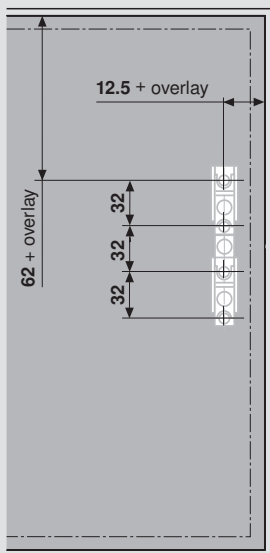
3 Safety lever release on lift mechanism and raise arms



Attaching the Mounting Plates

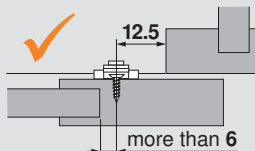
4a For Wood/wide aluminum

Panel or face frame

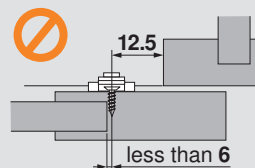


NOTE: All four screws must be installed

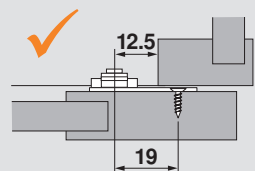
4b With bracket for five-piece doors



Standard mounting plate works



Standard mounting plate does not work



Use mounting plate with bracket when panel is < 6 mm from screw

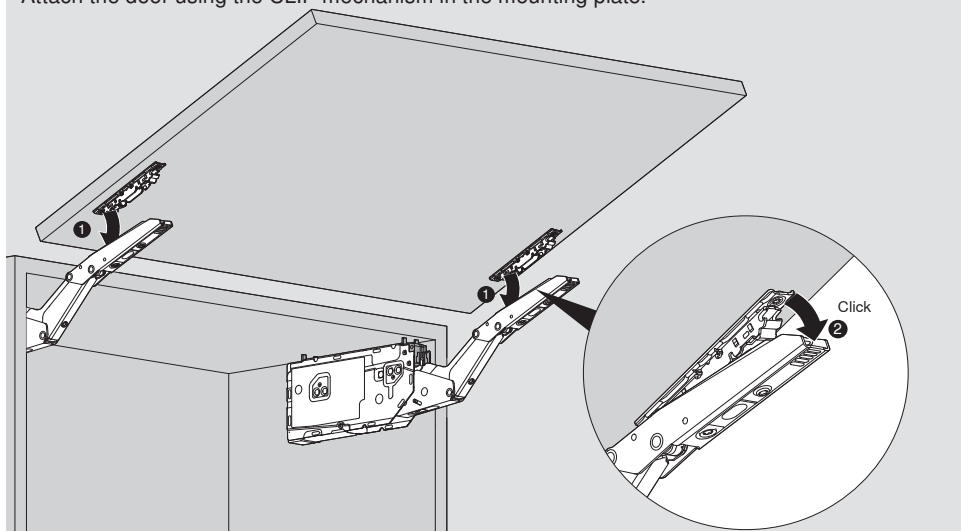
Part no.

Mounting plate w/ bracket set

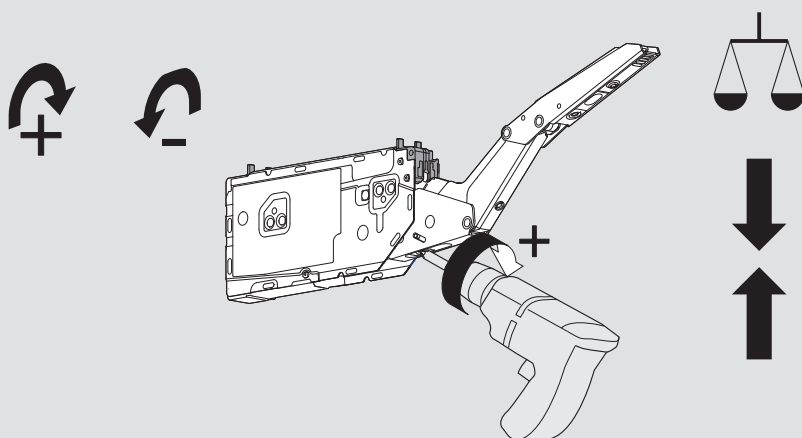
20S4F01

5 Attaching the door

Attach the door using the CLIP mechanism in the mounting plate.

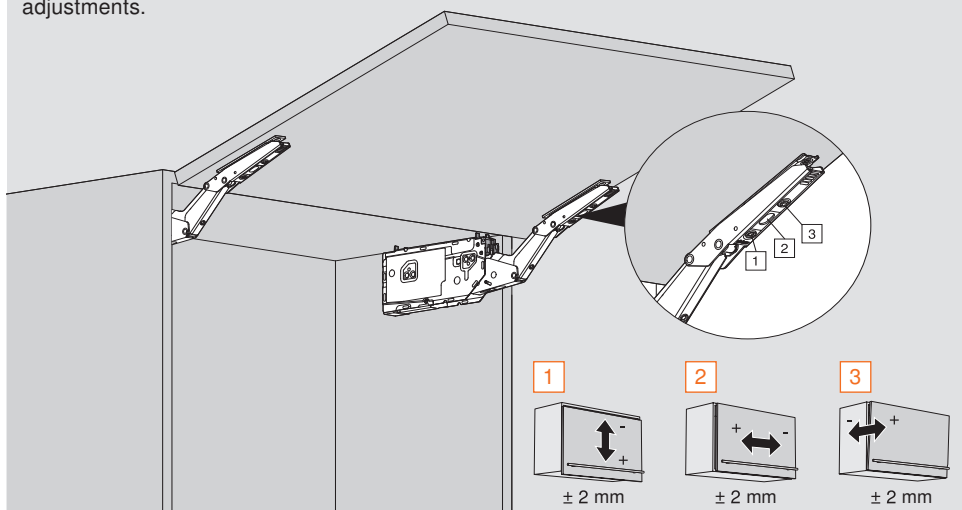
**6 Adjust the door tension**

Use a T20 TORX screwdriver or screw gun and a T20 TORX bit to adjust the lift mechanism to the desired tension (door weight balanced). Cover cap does not need to be removed to perform this adjustment.



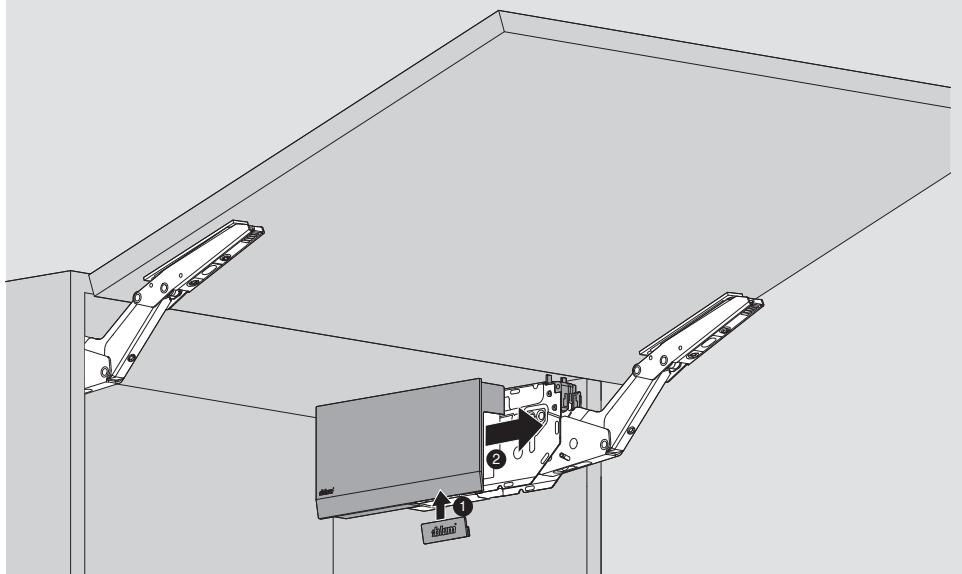
7 Finalize the door adjustments

Use a TORX T20 screwdriver to perform cam adjustments for each of the three-dimensional adjustments.



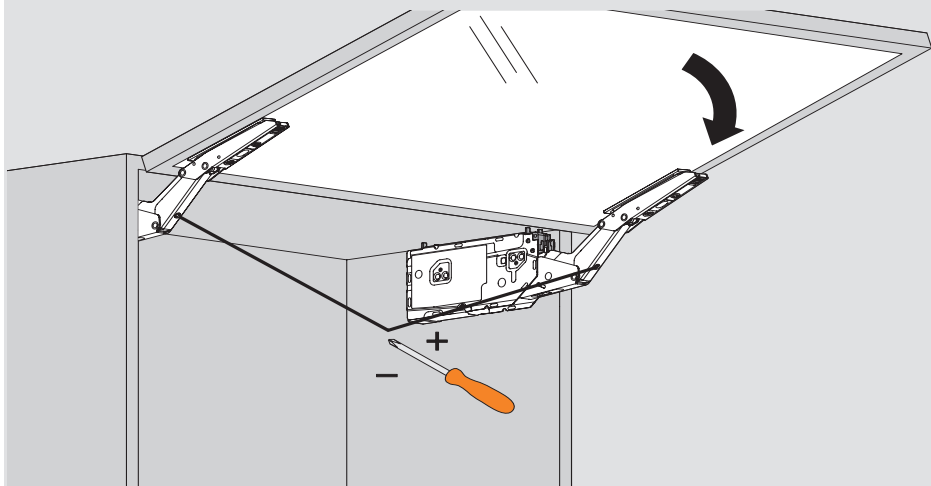
8 Attach cover caps

Place the left and right cover plates over the appropriate lift mechanisms and snap them in place.

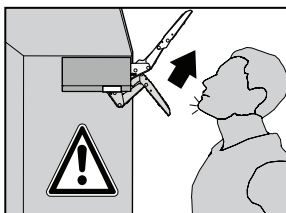


9 Adjust opening angle

Use a TORX T20 screwdriver to adjust opening angle between 75° and 107°.



NOTE: Adjustments can be made with the cap on



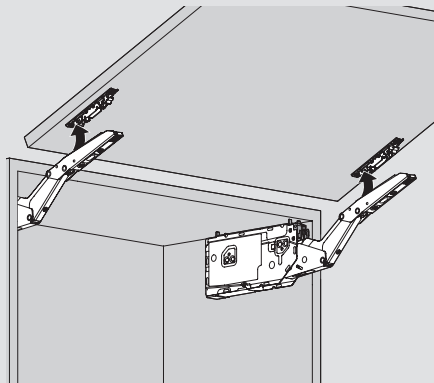
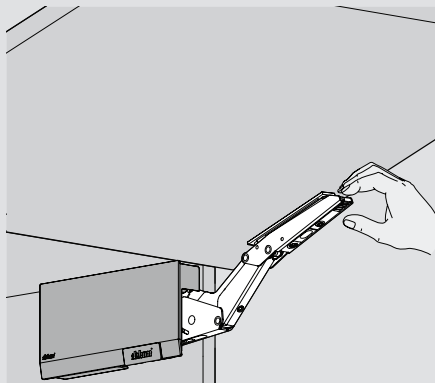
WARNING

Risk of injury from spring-loaded arm

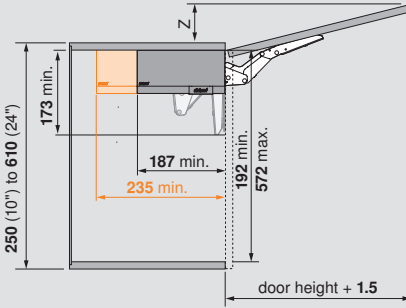
- Arm has built in safety feature to prevent opening and closing

Removing the door

- Open the door. Disengage the CLIP mechanism of the lever arm from the mounting plate
- Support the door with one hand and repeat on the other side

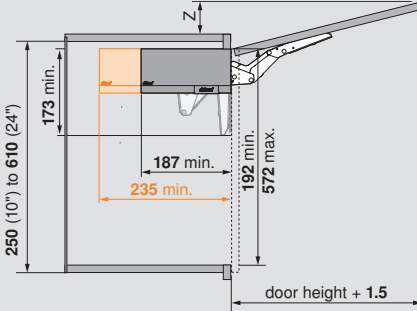


Door and hardware clearance - Frameless Application



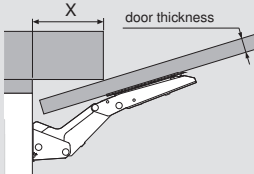
$Z = \text{door height} \times 0.29 + \text{door thickness} \text{ minus top panel thickness}$

Door and hardware clearance - Face Frame Application



$Z = \text{door height} \times 0.29 + \text{door thickness} \text{ minus top frame width}$

Decorative molding clearance



Door thickness	16	19	22	26
Maximum X	68	57	47	33

Inch	mm
1/32	.031 1
1/16	.063 1.5
3/32	.094 2
1/8	.125 3
5/32	.156 4
3/16	.188 5
7/32	.219 5.5
1/4	.25 6
9/32	.281 7
5/16	.313 8
11/32	.344 9
3/8	.375 9.5
13/32	.406 10
7/16	.438 11
15/32	.469 12
1/2	.5 13
17/32	.531 13.5
9/16	.563 14
19/32	.594 15
5/8	.625 16
21/32	.656 17
11/16	.688 17.5
23/32	.719 18
3/4	.75 19
25/32	.781 20
13/16	.813 20.5
27/32	.844 21
7/8	.875 22
29/32	.906 23
15/16	.938 24
31/32	.969 24.5
1	1 25.4

Blum, Inc.
800-438-6788
sales.us@blum.com
blum.com