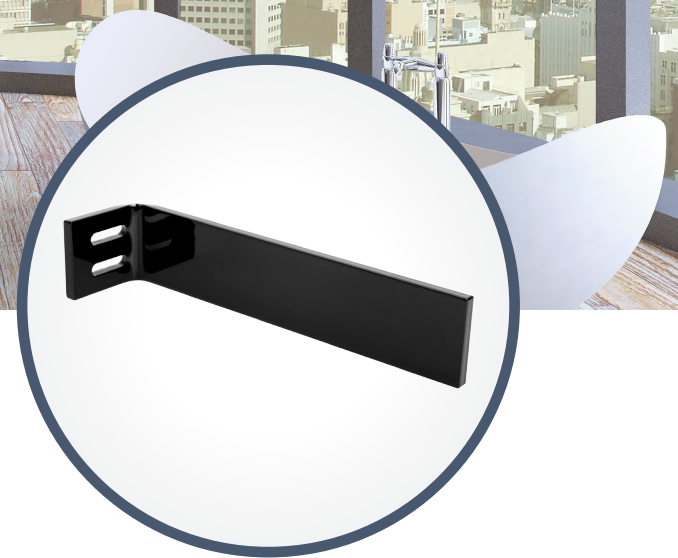




Federal Brace
BEAUTIFULLY CRAFTED CONFIDENT SUPPORT

SHELF SUPPORTS | *Hidden Shelf Bracket*



HIDDEN SHELF BRACKET INSTALLATION GUIDELINES

Every successful installation begins with good planning and action. Do not wait until the last minute to order your hidden shelf brackets for installation. From time to time stock replenishment may be in process and require a lead time. Make sure that all aspects of the support or stud locations are considered and discussed to ensure that your bracket installation will be smooth and that your support products will be sufficient.

Note that this installation document should not be considered a specific recommendation for your particular application. Federal Brace cannot provide installation guidelines to meet the particulars of every application. This document should be considered a help sheet that provides considerations about the general characteristics of a particular type of support and installation.

Characteristics of the Hidden Shelf Bracket

The Hidden Shelf Bracket is heavy duty steel powder coated with a black finish. 2 slots are provided for adjusting the placement as needed. Slots are 1" making it easy to level. The arm extends 8" from the wall for insertion into a floating shelf box or any other shelf material you choose to use.

The hidden shelf bracket has a 30 pound carrying capacity and it is recommended not to exceed this weight to avoid seeing any deflection in the shelf. Shelf should not extend more than 2" beyond the end of the bracket arm to maintain carry capacity.

Considerations when Installing Hidden Shelf Bracket

Whenever installing the Hidden Shelf Bracket make sure you are tying into a minimum of 1.75" thick stud wall material. You will want the fasteners to have as much biting material as possible. This will provide a secure fastening of the bracket. Remember a weak support bracket makes for a weak shelf.

Once placement is decided, hold the bracket in place and mark your slots. Drill pilot holes, using a drill bit slightly smaller than the fasteners (0.25"). Once the pilot holes are drilled, place the bracket in place and install fasteners. Prior to tightening fasteners completely, check level across the arms of the brackets. Adjust as needed and make final tightening of fasteners.

With the brackets securely fastened, insert shelf over the arms of brackets. Once the shelf is in place you will want to wipe it down to get rid of any handprints or other debris. If you are using your own shelf material you will be responsible for fit and finish.

Final step is to place your decor, enjoy your work and your new shelf! We are thankful that you chose to use Federal Brace

products in your home or office. Please send us images of your installation. We would love to add your work to our gallery to see Federal Brace products at work.

Also, know that the highest compliment Federal Brace can be given is a reference from our customers to friends and family. If you have enjoyed your buying experience with Federal Brace please let someone know.



For any questions or comments please to contact us by email at customerservice@federalbrace.com or by phone at (877) 353-8899. If you are a visual learner, check out our installation videos on our YouTube channel Don't forget to share your projects with your new Federal Brace brackets on Twitter and Instagram, just tag us @FederalBrace. Like us on Facebook, and check out our boards on Pinterest for more home improvement/decor and DIY project ideas.

